

Shrewsbury's
18-22 Post
Secondary
Journey Begins
2021





Our hope is to create our own in district program that will support our 18-22 student population with disabilities while also including peers without disabilities as partners in work and social opportunities.





Objectives:

1. Have program in our community and in our district
2. Enhance program opportunities
3. Provide programming for increased population in a more cost-effective manner





WHY?

Transition Planning Regulations

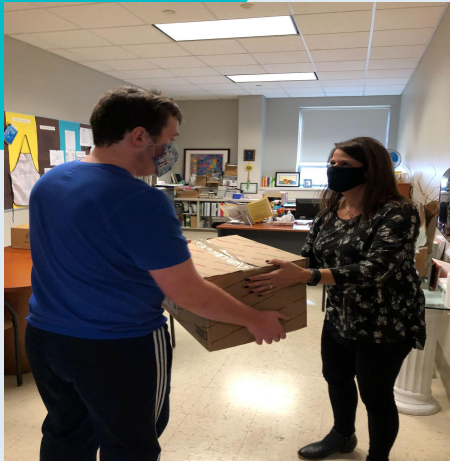
- Under federal and state laws, students with disabilities who receive special education services are entitled to receive appropriate transition services to support movement beyond high school, beginning at age 14.
- Students with the most significant disabilities gain access to appropriate adult services needed under Massachusetts Chapter 688 (1984).
- IDEA, the federal special education legislation, and Chapter 71B specify “Least Restrictive” as requiring placement with most typical peer opportunities and settings.



Community and Adult Life Transition



- SPS prides itself on equity and access for all students. This can be seen within all of our schools and our community partnerships.
- Shrewsbury High School currently provides opportunities for students with and without disabilities to access internships and vocational opportunities within the high school and local community-based settings.



Our WHY?



- One-time American Rescue Plan funding of \$344,000 targeted for special education (approved by MA DESE for this purpose)
 - Receive instruction to help reach their post-secondary vision
 - Employment opportunities
 - Local community experience
 - Access to independent living skills within their town of residence
 - Meaningful work
 - Vibrant and productive citizens



Our Students



Ryan Love

- I'm a Senior at Shrewsbury High School
- I like to play outside on my skateboard
- I like to draw pictures
- I like to hang out with my friends at Unified Club, Unified Basketball and Unified Track and Field



- I like measuring eyeglasses using the lensometer in Ms. Wallace's room
- I like working at the AC Marriott Hotel with my coworkers
- I like to go out to breakfast with my parents on the weekends
- My favorite job at the hotel is the laundry



Ryan Love

Vision

My post secondary vision is to work at McDonalds someday and give the customers their meals

Independent Living

- I'd like to stay living with my mom and dad for now, someday I'd like to live in an apartment with friends
- I like to go to Price Chopper with my friends and grocery shop and stop at Starbucks for a lemonade



Employment

- Working at the AC Marriott to gain customer service experience and job-based work skills
- Bottle/Can recycling
- Paper Delivery
- Package Delivery
- Lensometer

Education/Training

- Filling out job applications in my English class
- Working on budgeting in my math class
- Job training at the AC Marriott with the MOVE program





Program Needs

- Increased expectations for individualized programming
- Projected increase in enrollment and demands for out of district placement for transition programming
- Increased demands for programming in home community

Out of District Cost Analysis



**One student for 18-22 Program annual tuition
= \$54,000 on average without transportation**

**Potential out of district placement for
FY23**

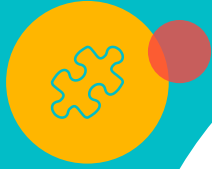
- 4 students = @ \$200,000

**Potential out of district placements for
FY24**

- 14 students = @ \$700,000



Building Community Partnership



Next Steps



- Functional educational learning opportunities
- Community-based job development and business development
- Transition and vocational assessments/portfolios
- Job coaching
- Travel training





Examples of Space Layouts

Many thanks to Westborough Public Schools for sharing their experience with us! Here are some examples of 18-22 spaces that we believe are necessary for program success.





Examples of Space Layouts



Timeline



Structure:

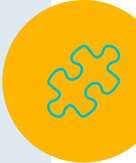
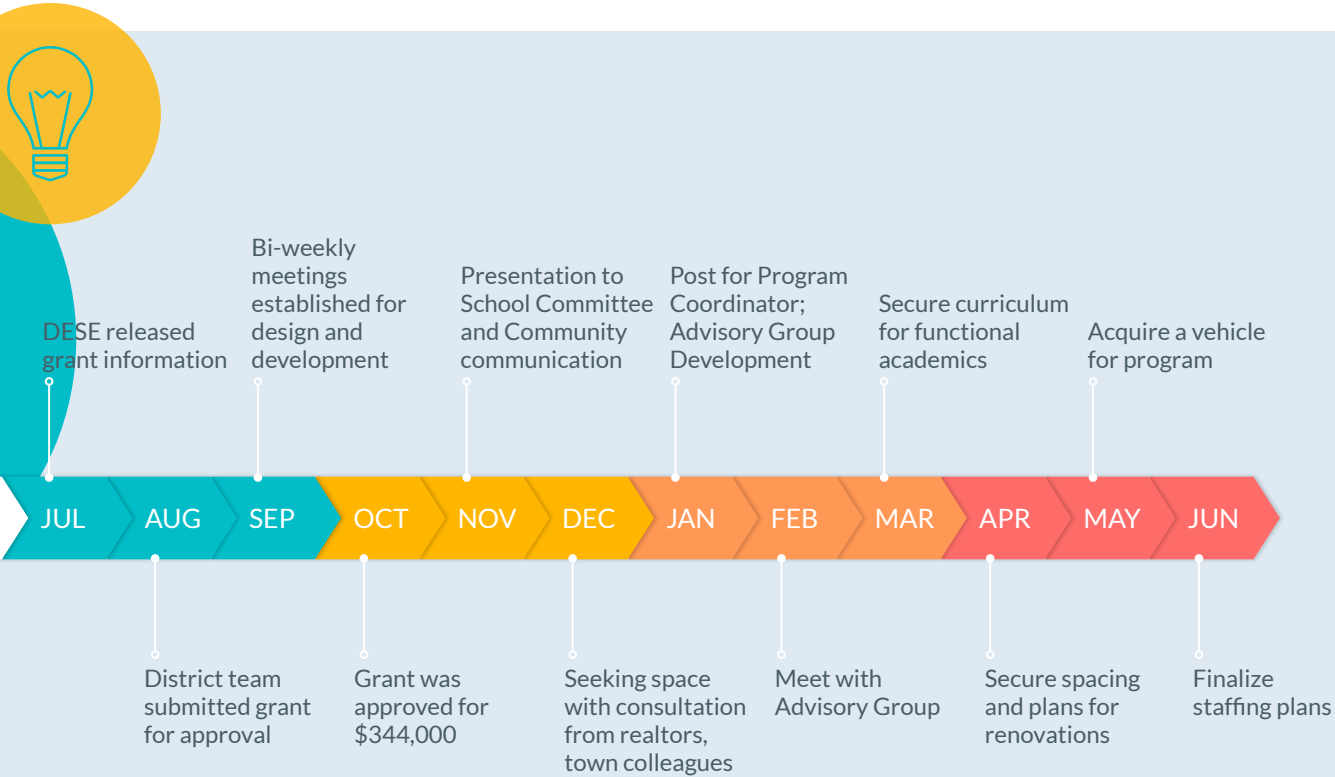
- Vision and School Committee Support
 - Business Plan
- Lease a local learning space
- Advisory Council

Funding:

- Potential Fundraising-Colonial Fund-Telethon
 - Furniture, Technology, Appliances
- Grant and General Budget
 - Program & Staffing



Timeline 2021-2022





Conclusion



- By developing this program and services, we will foster successful **long-term outcomes** for our students with disabilities as they transition from high school to adulthood.
- Ultimately, developing and fostering the connection and belonging to our community outside the walls of the public school system.





Thank You!

