The background of the slide is a detailed map of Shrewsbury, Massachusetts, rendered in a green-to-blue color gradient. The map shows a dense network of streets, with several larger bodies of water (lakes or ponds) interspersed throughout the urban layout. The text is overlaid on this map.

# Shrewsbury Public Schools

## Elementary Redistricting Project

*4 November 2020*

# Redistricting Committee

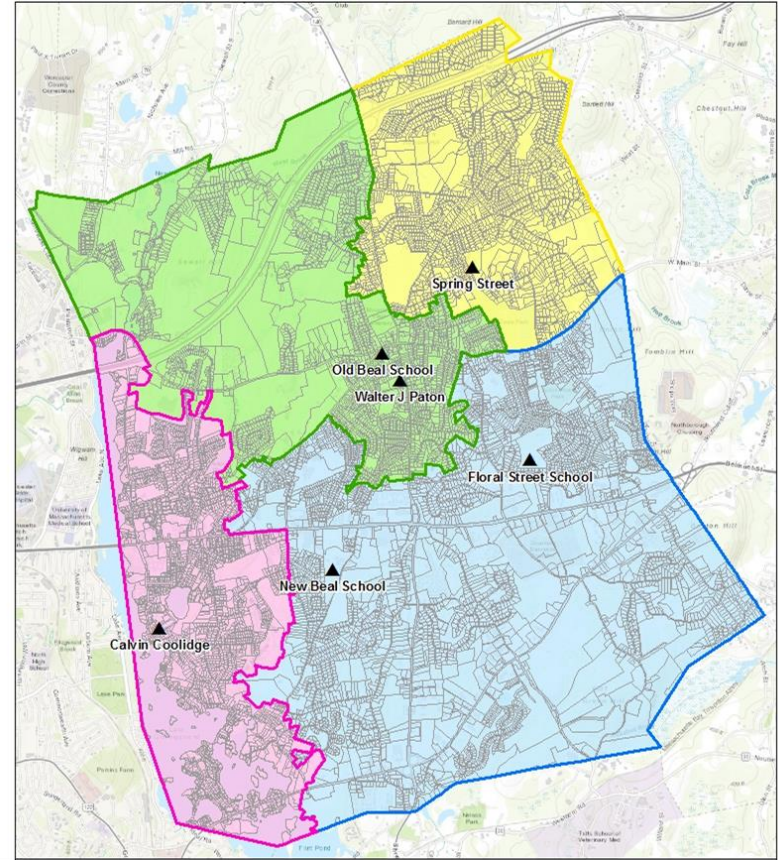
- Sandra Fryc, School Committee
- Jon Wensky, School Committee
- Joseph Sawyer, Superintendent of Schools
- Patrick Collins, Asst. Superintendent for Finance and Operations
- Tiffany Ostrander, Principal, Calvin Coolidge School
- Bryan Mabie, Principal, Spring Street School
- Nicole Grace, Parent, Spring Street School
- Shannon Creedon, Parent, Walter J. Paton School
- Rajesh Velagapudi, Parent, Floral Street School
- Christine Jasinski, Parent, Calvin Coolidge School
- Terrick Andey, Parent, Beal Early Childhood Center

# Topics Covered Today

- ✓ Project Goals & Objectives
- ✓ Quick Review of Redistricting & Demographics Workflow
- ✓ Initial Timeline
- ✓ Updated Timeline
- ✓ Project Progress
- ✓ Upcoming Meeting Schedule

# Project Goals & Objectives

- Beal Early Childhood Center being replaced by a new 790 seat K-4 elementary school
- Realign all elementary schools into K-4 configuration
- Create scenarios to reduce **enrollment** at all elementary schools to relieve overcrowding and move students to new Beal School
- Develop and use district projections to evaluate and adjust scenarios



# Redistricting Analysis Workflow

1 : Data gathering and processing mapping current student locations and getting an understanding of the problem to solve

2 : Identifying discrete areas that become components or the building blocks for scenarios

3 : Collaboratively building scenarios and evaluating scenarios against district considerations

4 : Presenting information in the form of maps, charts and graphics to staff and community

# Demographic Analysis Workflow

1 : Compute demographic projections using wide variety of available data

2 : Analyze fertility and migration patterns to develop cohort-component model for projecting population by five-year age group

3 : Produce report of demographic analysis and provide grade level projection figures by district for redistricting analyses

4 : Apply projection figures to scenarios developed in the redistricting workflow and evaluate and adjust scenarios

This work is being done by a demographer under contract with AppGeo.

# Considerations

Ensure educational needs are met.

---

Meet needs regardless of assignment.

Emphasize “neighborhood school” approach.

---

Prioritize walkability and maintain natural boundaries.

Ensure availability of dedicated instructional spaces.

---

Including art, music, ELL, special ed etc.

Consider student demographics.

---

School populations should reflect town diversity

Account for future development/growth in the plan.

---

Identify potential new developments and include population projections.

Minimize change.

---

Minimize changes to school assignments for existing students.

# Initial Timeline

## MARCH - APRIL 2020

Data Gathering &  
Background Analyses

## MAY - AUGUST

Demographic  
Analysis & Population  
Projections

## OCTOBER - NOVEMBER

Present initial proposed  
scenarios to School Committee  
& Community via Public Forums

## APRIL - JUNE

Build Review &  
Revise Scenarios

## AUGUST - SEPTEMBER

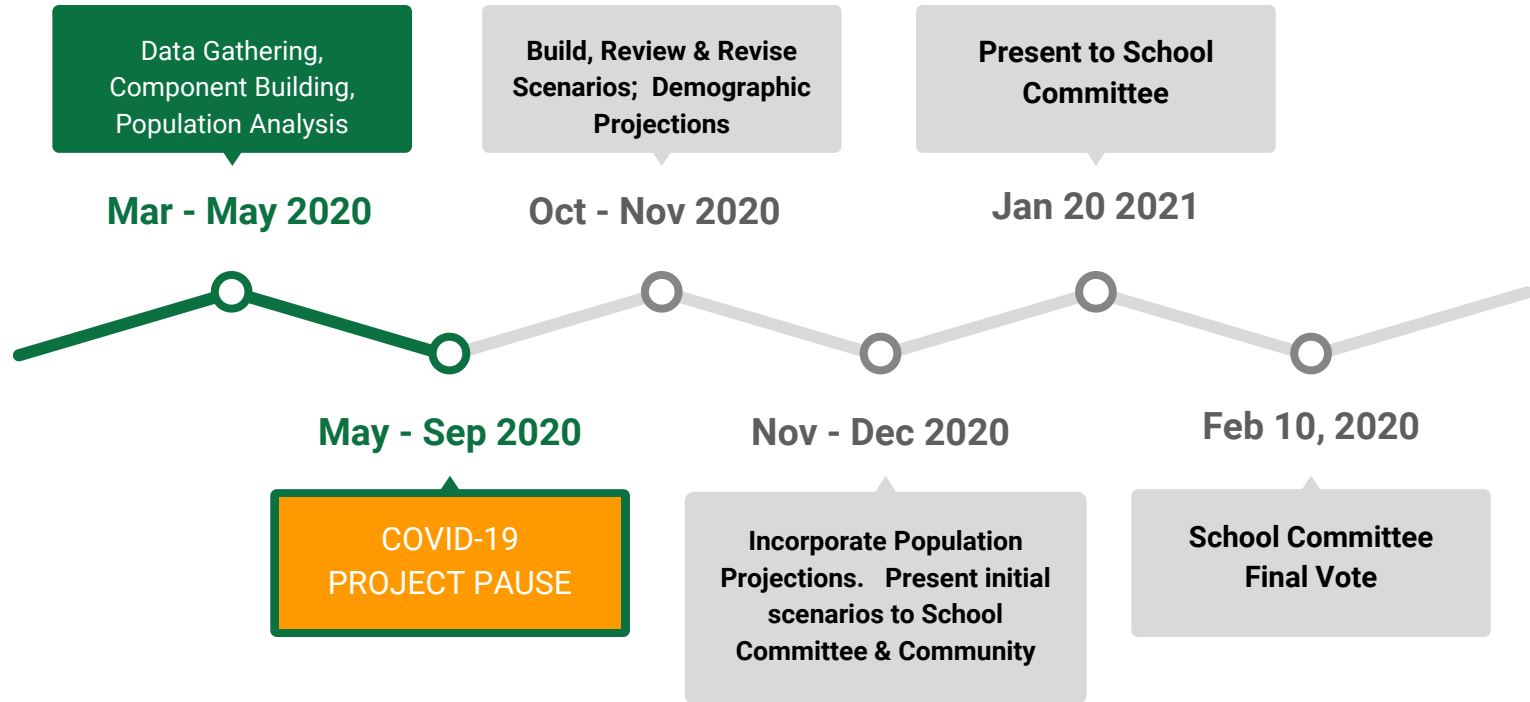
Incorporate Population  
Projections into  
Scenarios

## DECEMBER 2020

Incorporate feedback  
and finalize scenarios  
for School Committee  
Vote

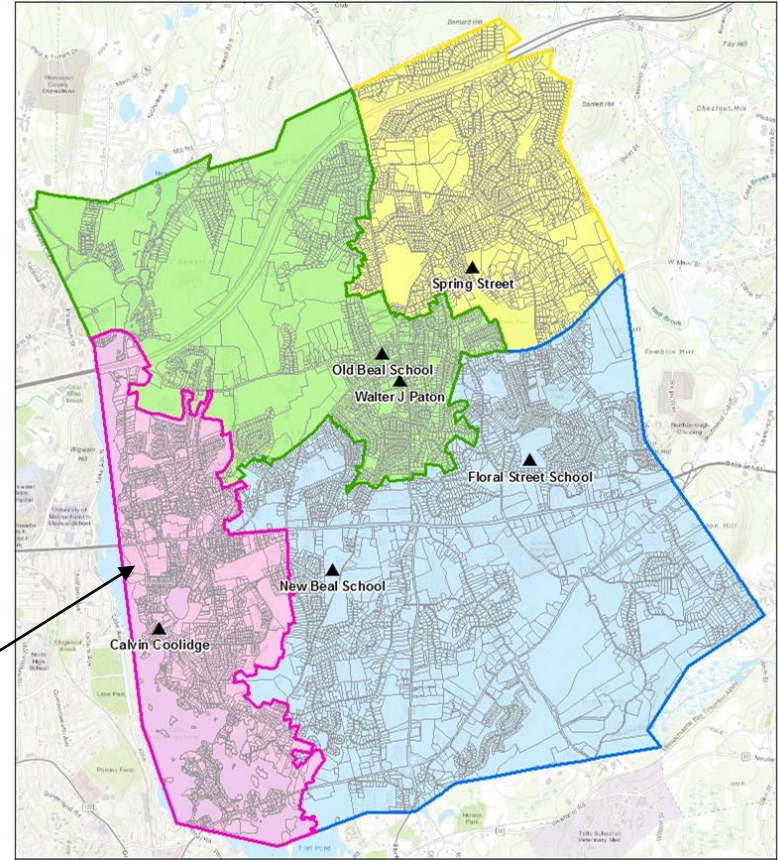


# Updated Timeline



# Project Progress

- Initial data collection completed though missing development information
- Started and completed component creation
- Cohort-component model complete, report and projections in progress
- Current elementary school zones



## Next Steps



AppGeo to build several scenarios



Schedule meetings for scenario evaluation



Incorporate projection data into scenarios

# Upcoming Meeting Schedule

## October

10/27 Re-start Redistricting Committee work w/ AppGeo [**Completed**]

## November

11/4 **School Committee** update on progress

11/10 **Redistricting Committee** look at preliminary options—input/potential revise

11/17 **Redistricting Committee** look at preliminary options—input/potential revise

# Upcoming Meeting Schedule

## December

12/1 Redistricting Committee hold a virtual community forum on rationale, process, schedule, initial options [record this event and post so others who missed can watch later]

12/8 Redistricting Committee meeting w/ AppGeo to review/refine options develop pros/cons weighting of each option

12/16 Joint Redistricting Committee and School Committee agenda “Hold Date” for demographer presentation

## January

1/6 School Committee update on options

1/12 Community forum to look at refined options—seek feedback

1/13 Redistricting Committee finalize pros/cons weighting of each option—show 2-3 options

1/20 Redistricting Committee final recommendation to School Committee

1/27 School Committee public hearing

# Upcoming Meeting Schedule

## February

2/10 School Committee vote final plan

## March-June

Communicate plan

## August [2021-2022 school year]

Execute plan



# Questions