

**Summer 2016  
School Facility Capital Repairs and  
Improvements**

September 14, 2016

---

---

---

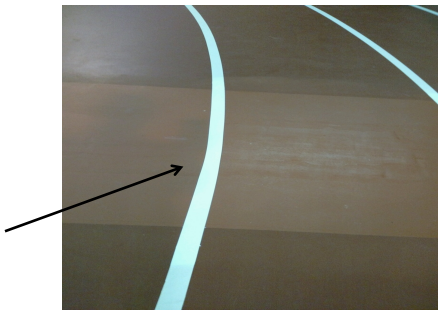
---

---

---

---

**S.H.S. Indoor Track – Crack Repair**



---

---

---

---

---

---

---

**S.H.S. Gym Floor Re-Finish**



---

---

---

---

---

---

---

S.H.S. Basketball Courts: During



---

---

---

---

---

---

---

S.H.S. Basketball Courts: After



---

---

---

---

---

---

---

S.H.S. Tennis Courts: During



---

---

---

---

---

---

---

S.H.S. Tennis Courts: After



---

---

---

---

---

---

---

Coolidge School Paving



---

---

---

---

---

---

---

Coolidge School Paving



---

---

---

---

---

---

---

Coolidge School Paving



---

---

---

---

---

---

---

Paton:  
Temp. Fencing & Exterior Elec. Box



---

---

---

---

---

---

---

Paton:  
Exterior Mechanical Equipment



---

---

---

---

---

---

---



Paton:  
Boiler Room Equipment



---

---

---

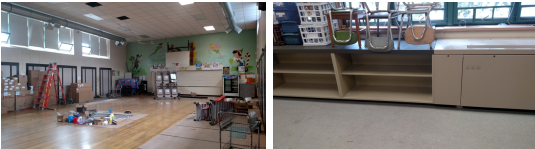
---

---

---

---

Paton:  
Café & Finished Classroom



---

---

---

---

---

---

---

Paton:  
Classroom & New Water Heater



---

---

---

---

---

---

---

Spring Street:  
New Gas Line Installation



---

---

---

---

---

---

---

Spring Street:  
Gas Line on Driveway



---

---

---

---

---

---

---

Spring Street:  
Gym and Lobby



---

---

---

---

---

---

---

Spring Street:  
Roof Decking & New HVAC Units for  
Modular Classrooms



---

---

---

---

---

---

---

Spring Street:  
First Floor Classroom



---

---

---

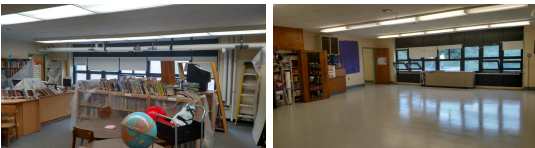
---

---

---

---

Spring Street:  
Second Floor Classrooms



---

---

---

---

---

---

---

Spring Street:  
Bathroom and Cafeteria



---

---

---

---

---

---

---