



Profile of a Graduate

Report to School Committee May 10, 2017

What do high
functioning
organizations do when
faced with a changing
landscape?

- + Pay attention
- + Investigate and explore
- + Develop a thoughtful, well-processed response
- + Take action



Pay Attention

Information

Networks

Tools

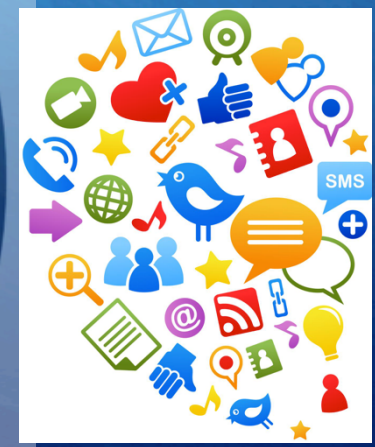
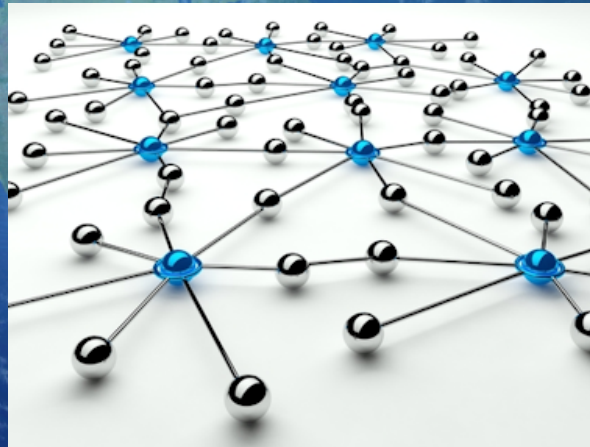
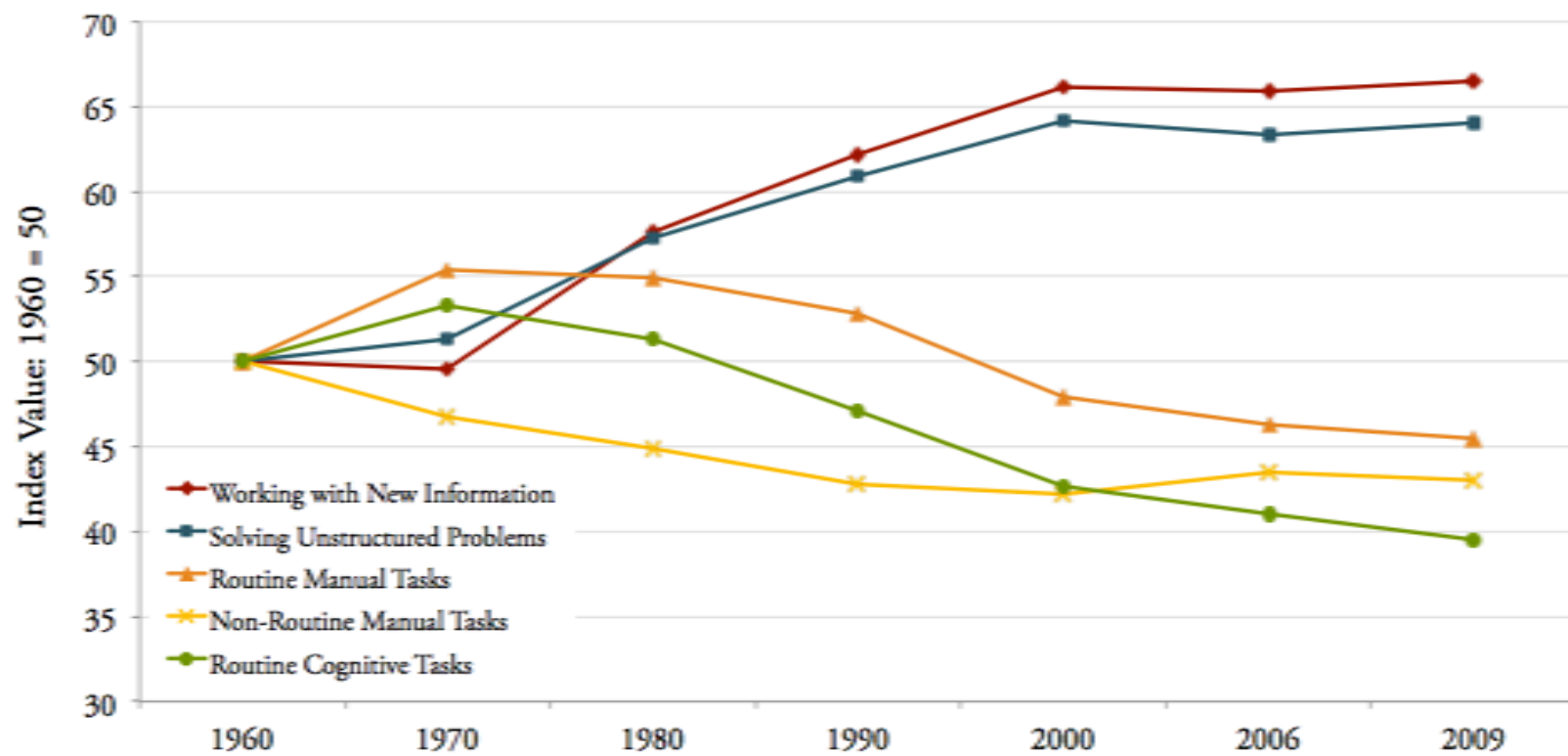


Figure 3: Index of Changing Work Tasks in the U.S. Economy 1960-2009²¹



Top 10 Skills: Future of Jobs Report



2015	2020
Complex Problem Solving	Complex Problem Solving
Coordinating with Others	Critical Thinking
People Management	Creativity
Negotiation	Coordinating with Others
Quality Control	Emotional Intelligence
Service Orientation	Judgement & Decision Making
Active Listening	Negotiation
Creativity	Cognitive Flexibility



Investigate and Explore

A FREE Film Screening:

Most Likely To Succeed



"The role of education is no longer to teach content, but to help our children learn in a world that rewards the innovative . . ."
~ Tony Wagner, *Most Likely To Succeed*

Join us for this thought provoking documentary.
Be part of the conversation about what Shrewsbury schools can do differently to best prepare our students for this changing world.

WHEN

MARCH 16, 2016
SHREWSBURY HIGH SCHOOL

6:30 PM

Most Likely To Succeed screening with introductory comments from Dr. Joseph Sawyer, SPS Superintendent

8:00 PM

Panel & Audience Discussion

- * Mary Beth Banios, SPS Assistant Superintendent
- * Justin Reich, Exec. Director PK12 Initiative at MIT
- * Dan Kara, Research Director, ABI Research



Sponsored by the Shrewsbury Public Schools
Colonial Fund with Shrewsbury Federal Credit Union,
our Innovation Partner



INNOVATION IN LEARNING

Report To School Committee
October 2016

Shrewsbury Public Schools Innovation In Learning Study Group

Shrewsbury Public Schools

Project Based Learning District Goal

Here in Shrewsbury, we are a hive of innovation. As we prepare students for their future in a complex world, we strive to create authentic learning experiences to enhance our content and build collaboration, creativity, and critical thinking skills among our students.

This website is designed to support teachers in Shrewsbury, as they work toward our [district goal](#). While

[#shrewsburylearns](#)

Jill Carter Retweeted



Emily Bredberg @BredbergReads

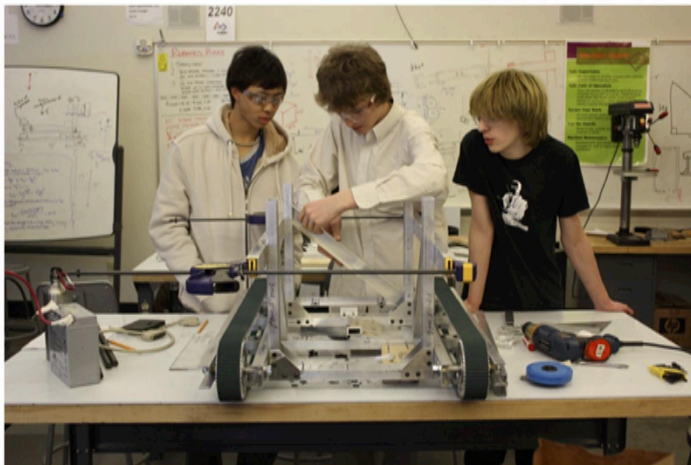
Awesome nutrition project from
[@MrsCarterSHS](#) - students reworked
menus with healthier options



Develop a Thoughtful, Well-
Processed Response



Begin with the end in mind



Invitation to Join Profile of a Graduate Working Group

Shrewsbury Public Schools is looking for educators, parents, community members, business leaders and current and former high school students to participate in a working group that will help create Shrewsbury's "Portrait of a Graduate." Simply stated, a portrait of a graduate defines what we believe is most critical for our students to know and be able to do by the time they graduate from Shrewsbury High School. To get a better sense of the goal, please click here to see what Fairfax County, VA Public Schools developed for their Portrait of a Graduate (<https://www.fcps.edu/about-fcps/portrait-graduate>).

Having this profile well articulated will help inform the district's next set of strategic priorities and the instructional decision making across our schools. Please consider lending your voice and perspective to this important project.

This work is part of an ongoing community discussion started last year with the screening of the *Most Likely to Succeed* documentary and the establishment of a district-wide Innovation in Learning Study Group. Our conversation is focused on how Shrewsbury Public Schools can best prepare students for a rapidly changing, interconnected digital world and exploring and learning from how other learning institutions are meeting this challenge.

Participants will be required to attend 3 working group retreat days (8:30 - 3:00) and to read 2 texts connected to 21st century learning. Retreat Days are scheduled for 1/13 (note change from 1/12), 2/10, and 3/17. All meetings will take place at the Shrewsbury Public Library.

To apply to be part of this group, please click [here](#). Applications due Friday, December 2nd

Profile of a Graduate Working Group

Shrewsbury Public Schools Profile of a Graduate Project: Working Group Members

Name	Role	District/School Affiliation	Field of Employment
Mary Beth Banios	Asst. Superintendent for Curriculum, Instruction &	District	Education
Todd Bazydio	Principal	Shrewsbury High School	Education
Mary Ellen Beaton	English as a Second Language Teacher	Oak Middle School	Education
George Belsito	Parent/Community Member	Oak Middle School	Marketing
Annamaria Chittim	Co-Director of Clinical Services	Shrewsbury Youth & Family Services	Social Services
Kristen Clifford	Special Education Teacher	Floral Street School	Education
Ashish Cowagi	Parent/Community Member	Floral Street School & Sherwood Middle School	Information Technology
Rick Doherty	Science & Engineering Teacher	Shrewsbury High School	Education
Arne Gericke	Parent/Community Member	Shrewsbury High School	Biochemistry; Higher Education
Karen Gutekanst	Assistant Principal	Sherwood Middle School	Education
Hannah Hopkins	English Language Arts & Social Studies Teacher	Sherwood Middle School	Education
David Hruskoci	Director of Science & Engineering	Shrewsbury High School	Education
Nga Huynh	Director of School Counseling	Shrewsbury High School	Education
Pam LeBlanc	K-12 Director of Visual Arts	District	Education
Dale Magee	School Committee Member	District	Medicine
Lauren Mitsis	Parent/Community Member	Paton School & Sherwood Middle School	Education
Kim Mullen	Parent/Community Member	Oak Middle School & Shrewsbury High School	Information Technology
Sonia Ortiz-Miranda	Parent/Community Member	Shrewsbury High School	Biotechnology
Lisa Papazian	Instructional Coach/Curriculum Coordinator	Paton School	Education
Michael Robillard	Parent/Community Member	Sherwood Middle School & Shrewsbury High School	Information Technology
Thomas Siwek	Parent/Community Member	Sherwood Middle School & Shrewsbury High School	Manufacturing
Liza Trombley	Director of English	Shrewsbury High School	Education
Lan Xu	Parent/Community Member	Floral Street School & Oak Middle School	Engineering & Finance

Process

4 meetings over the course of 4 months

Reviewed existing *Profiles of a Graduate*

Guest Speakers

- + Innovation in Learning Study Group
- + Primary Source and Shrewsbury Social Science Department administrators
- + Current and former SHS students
- + Dr. Robert Martello, Olin College
- + Brenda Fingold, UMass Center for Mindfulness

Book studies

Variety of videos, articles, and other resources



Working Draft: Shrewsbury's Profile of a Graduate



Global Citizenship and Engagement

Listen with open mind; Engage collaboratively with individuals from diverse backgrounds; Understand society's impact on natural world; Understand impact of local and global civic decisions



Collaboration and Communication

Work effectively and respectfully with diverse teams; Listen for knowledge, values, attitudes, and intentions; Communicate for a range of purposes; Articulate thoughts and ideas utilizing a variety of forms and media



Resilience and Focus

Persevere to accomplish difficult task; Work effectively in a climate of ambiguity and changing priorities; Employ strategies to maintain personal wellness, focus, and intention; Incorporate feedback effectively; Monitor and direct own learning



Innovation

Use a wide range of idea creation and problem solving techniques; Elaborate, refine, and evaluate ideas; Demonstrate originality and inventiveness in work and understand real world limits to adopting new ideas; View failure as an opportunity to learn; Act on creative ideas to make tangible contributions; Reflect critically on learning experiences



Leadership

Use interpersonal and problem solving skills to guide others towards a goal; Demonstrate integrity, humility, and flexibility of response; Recognize and support the leadership of others; Act responsibly with the interests of the larger community in mind

Ideas Needing Further Discussion...

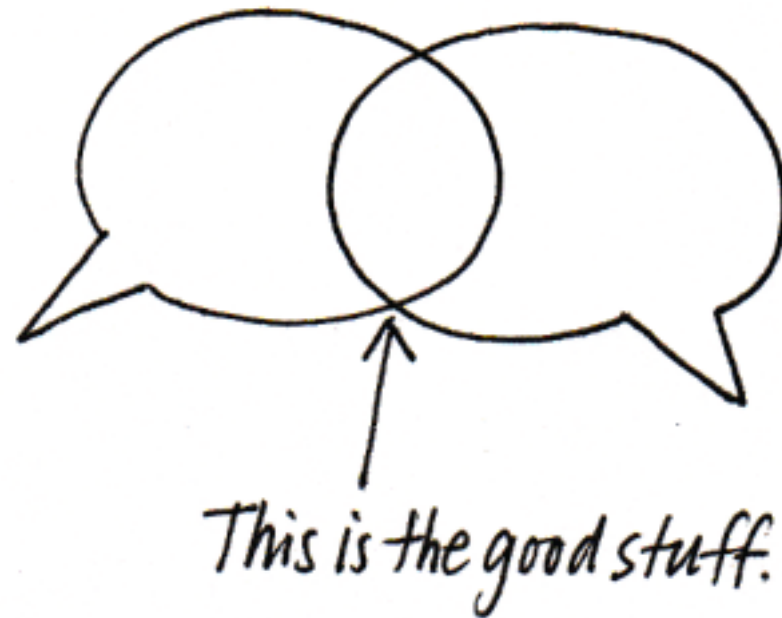
- + How do we handle content knowledge in this environment?
- + We don't want to avoid making the hard decisions about priorities and focus. Do we have too much?
- + What are the critical skills of leadership?

The skill set that we must address is the skill set that represent those of the learner rather than the "learned." Students need to be expert learners rather than learned experts. That is a very different objective and one that our community must address if they wish to best serve our children and our community's future. -

Rick Doherty, SHS educator

My greatest take away is that we are preparing a different kind of graduate because we have a different kind of world. Our students will use technology to access information and interact in a global economy. They need to be equipped with specific skills to be successful: the ability to persevere, think critically, communicate effectively, respect others, and be resilient.

- Lauren Mitsis, Parent



Our members are here to answer your questions and engage in conversation