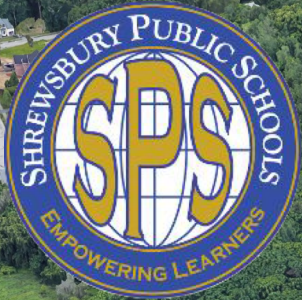
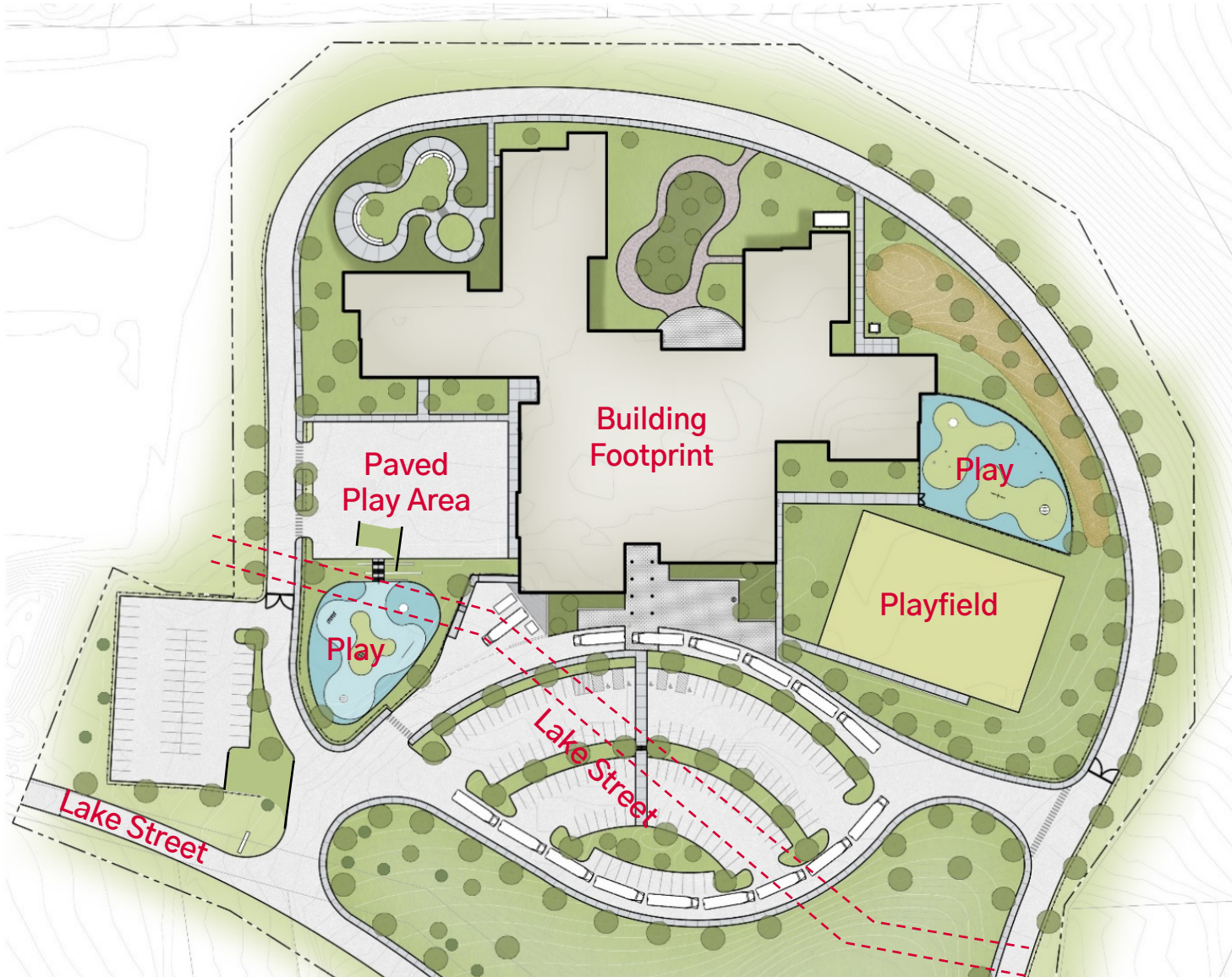


MAJOR HOWARD W. BEAL SCHOOL



- Design Development November 2018 – March 2019
- 60% Construction Documents March – June 2019
 - 100% Site Drawings May 2019
- 90% Construction Documents June – August 2019
 - 100% Steel & Concrete Drawings
- 100% Construction Documents August – September 2019
 - Lake St. Realignment Fall 2019
- Construction June 2019 – August 2021
- Building Occupancy August 2021

SITE DEVELOPMENT

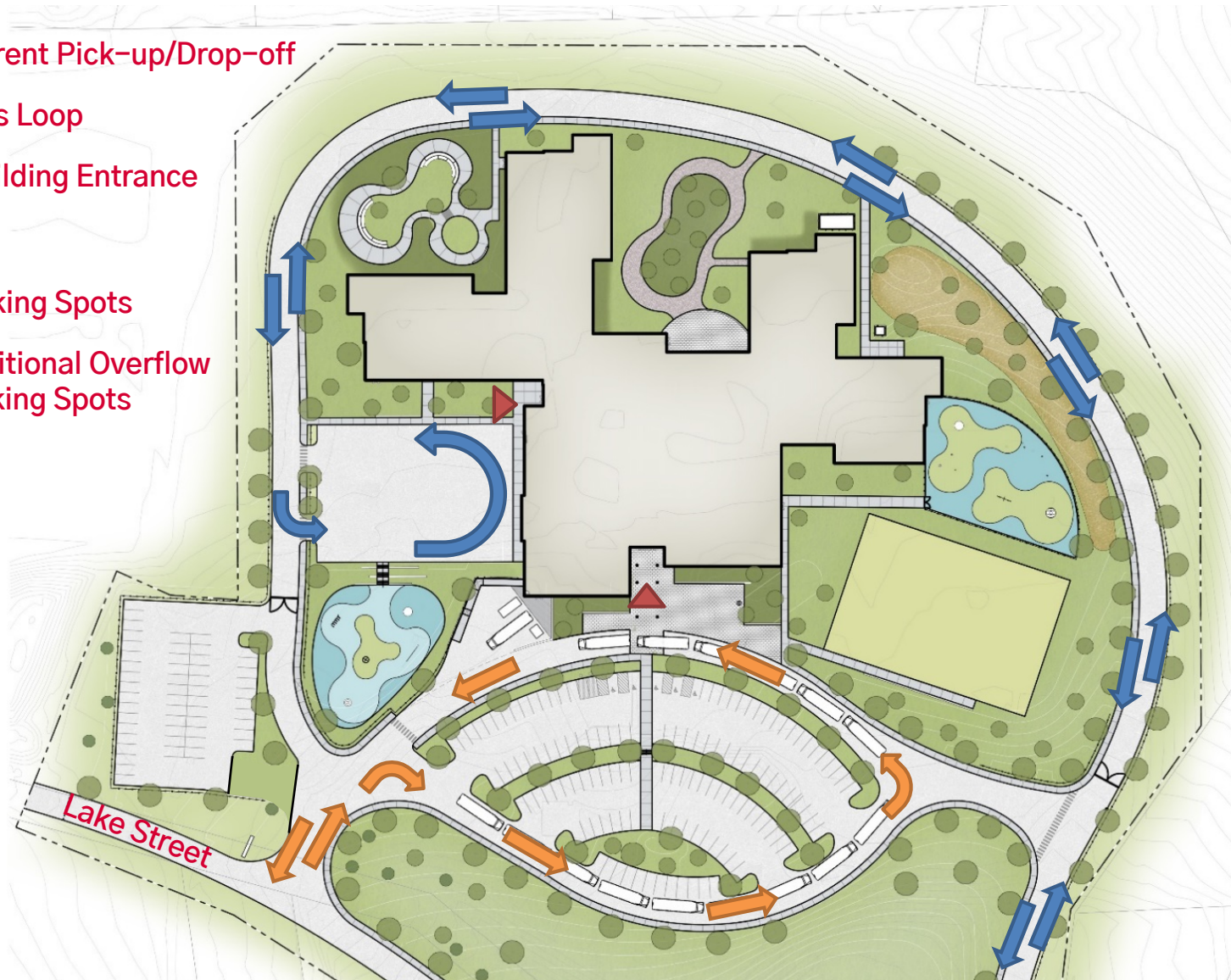


SITE CIRCULATION

- Parent Pick-up/Drop-off
- Bus Loop
- Building Entrance

181 Parking Spots

162 Additional Overflow
Parking Spots

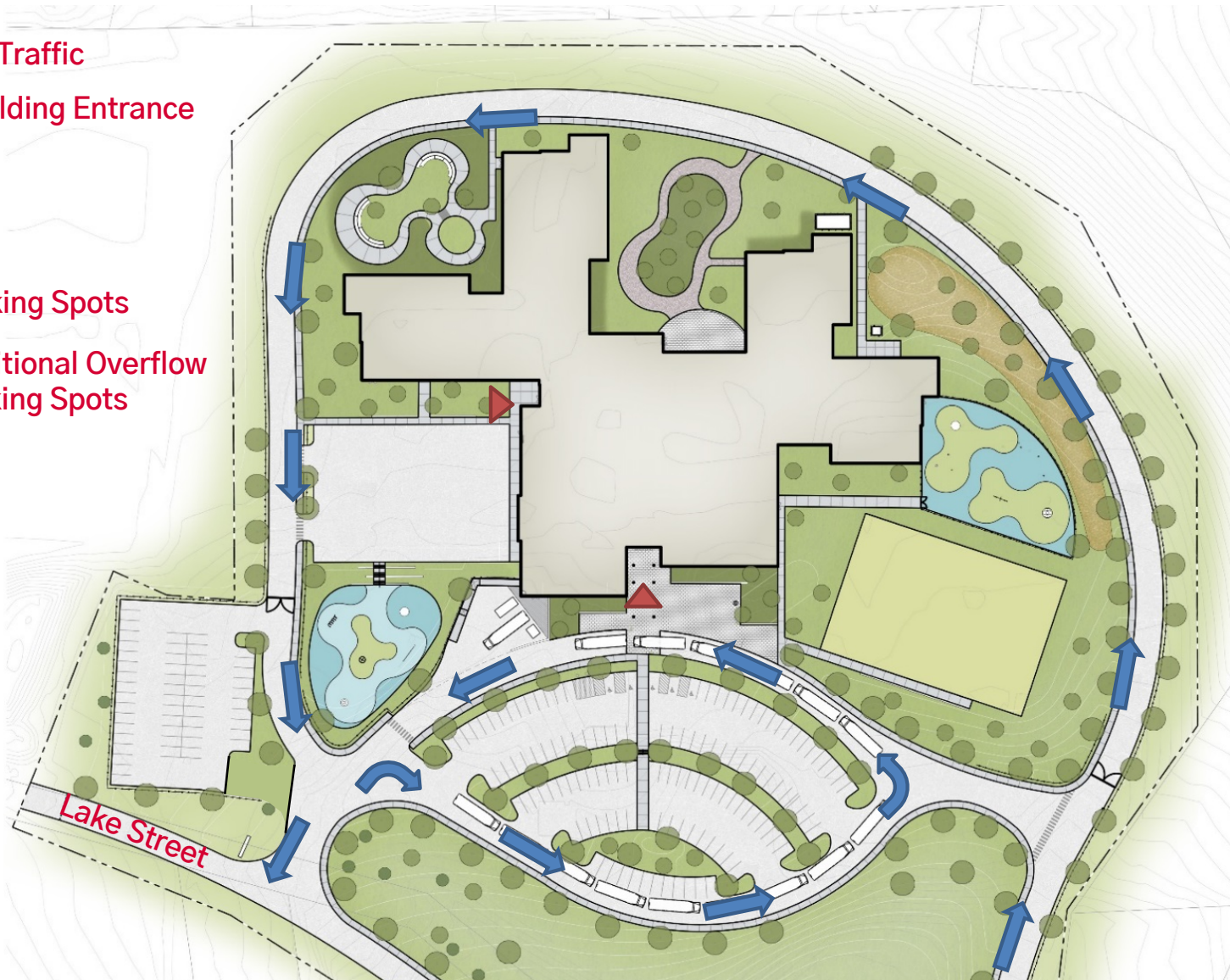


SITE CIRCULATION

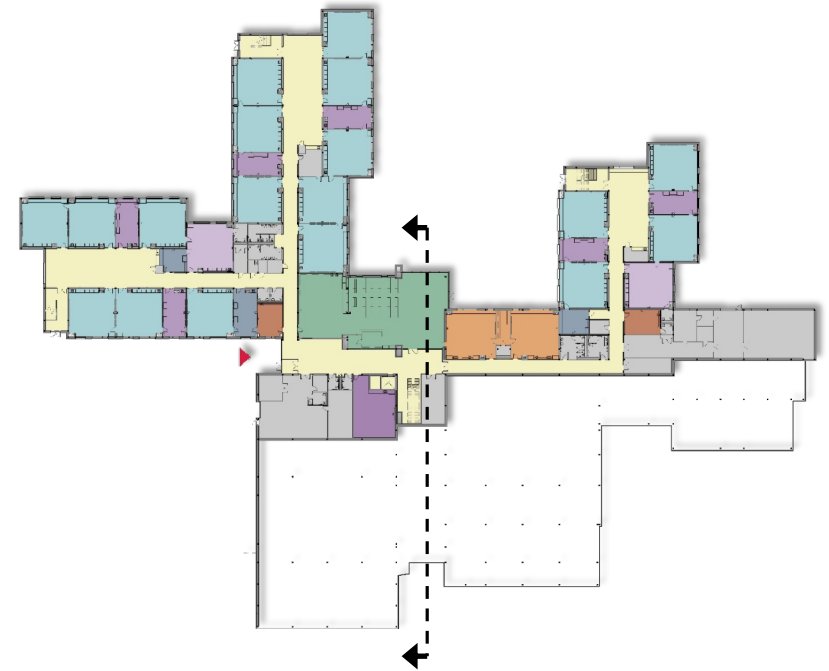
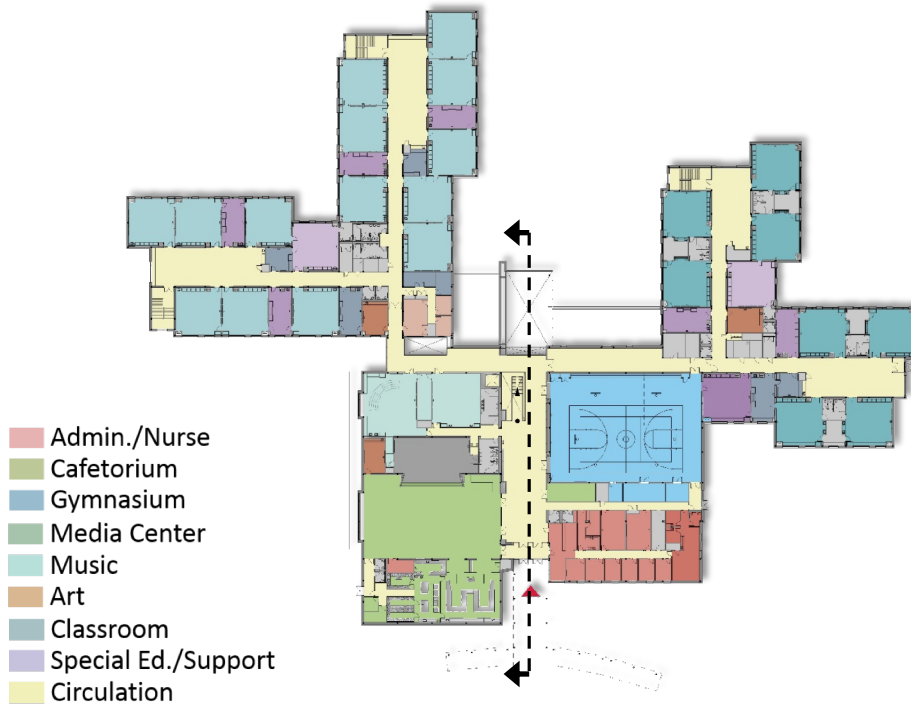
- ➡ All Traffic
- ▲ Building Entrance

181 Parking Spots

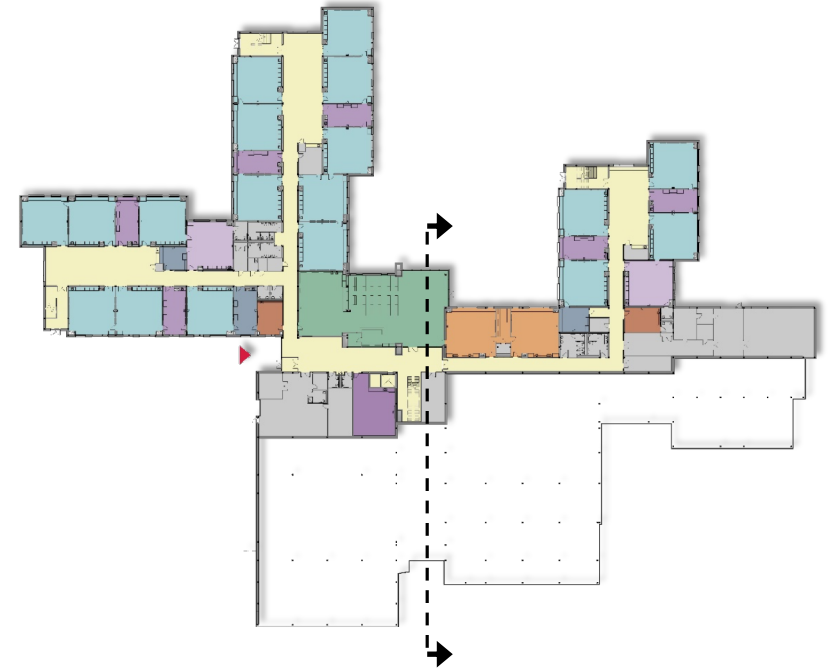
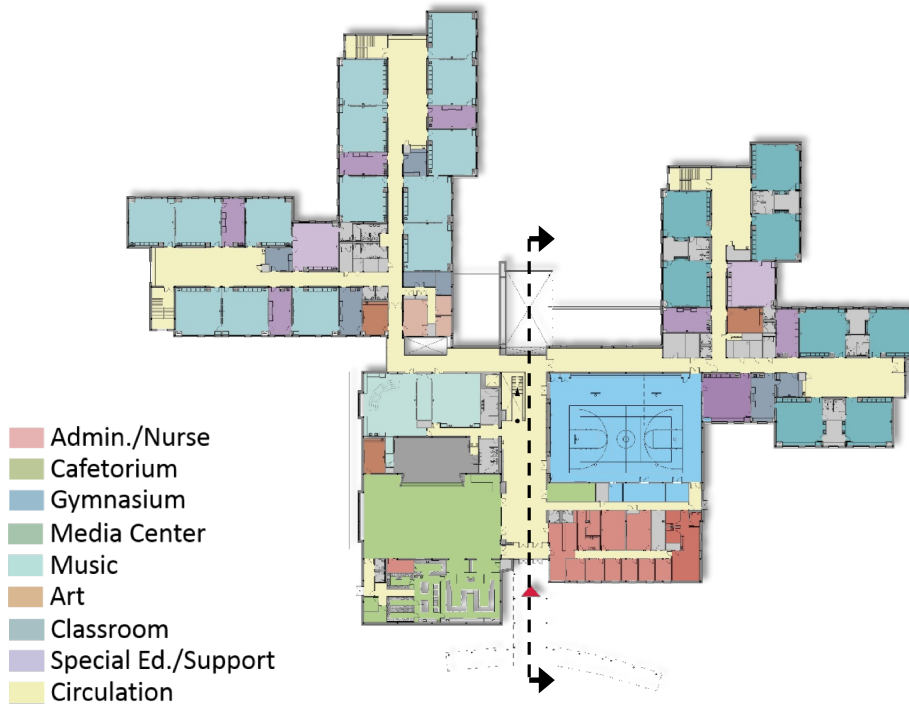
162 Additional Overflow
Parking Spots



DESIGN DEVELOPMENT



DESIGN DEVELOPMENT



MAJOR HOWARD W. BEAL SCHOOL

