



PARKER ROAD



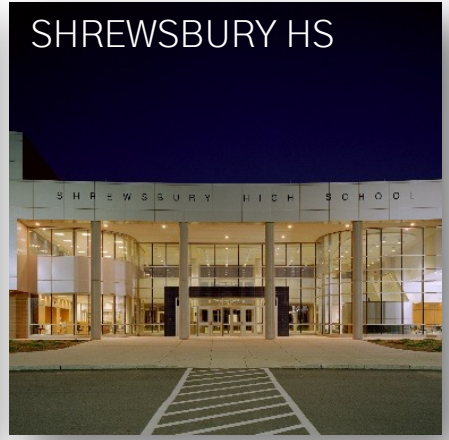
COOLIDGE



SPRING ST



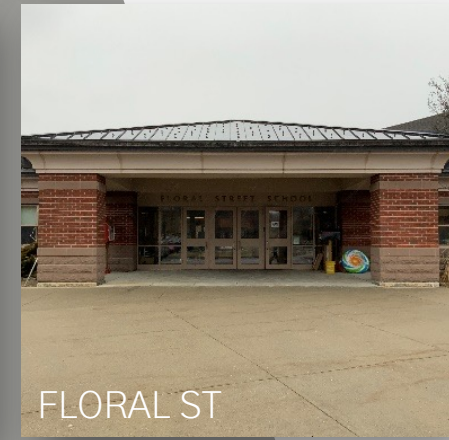
SHERWOOD



SHREWSBURY HS



BEAL



FLORAL ST



PATON



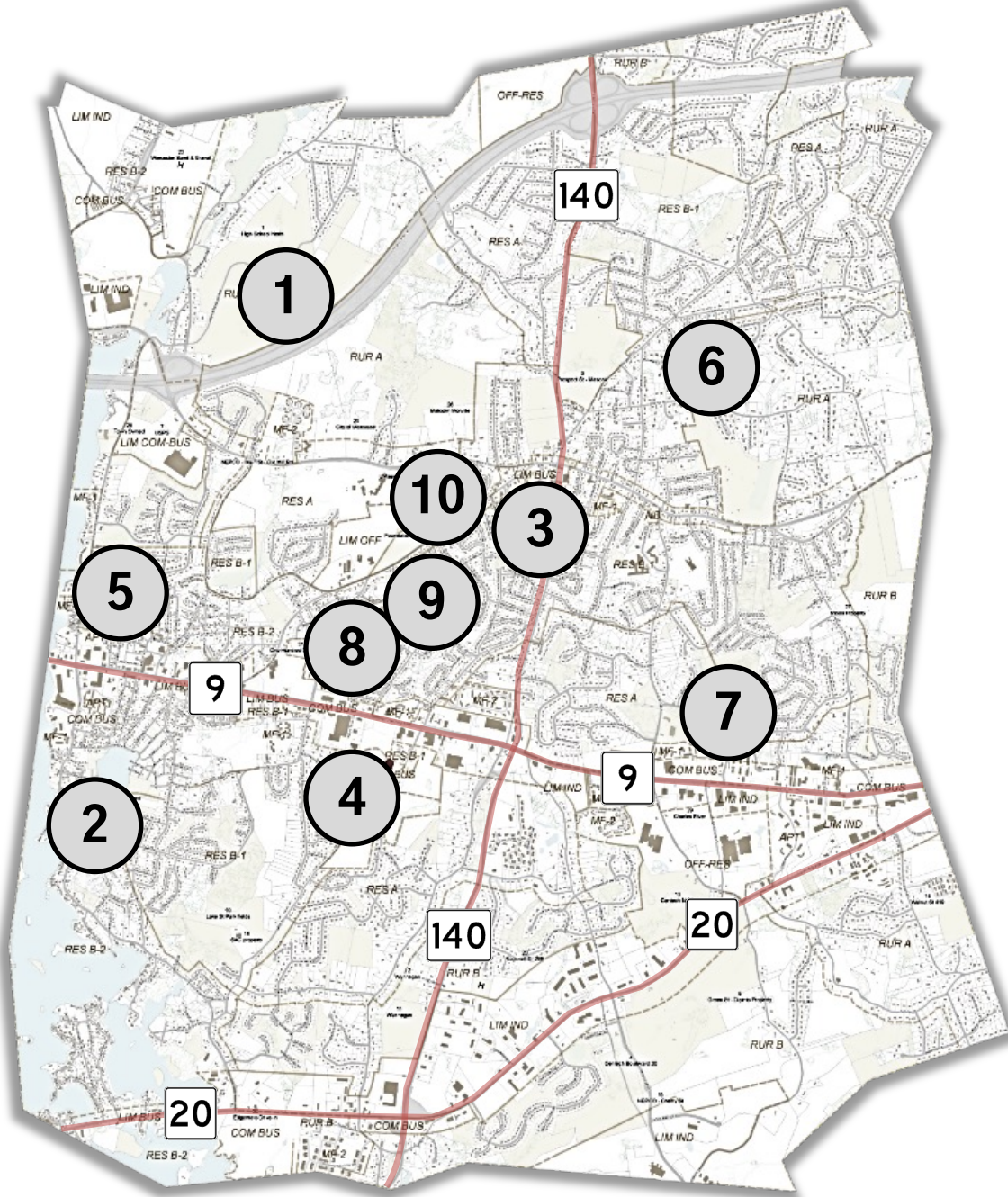
OAK



SPS ADMINISTRATION



PRE-K THROUGH 12 CAPITAL INVESTMENT AND ASSESSMENT STUDY



- 1 – SHREWSBURY HIGH SCHOOL
- 2 – CALVIN COOLIDGE SCHOOL
- 3 – WALTER J. PATON SCHOOL
- 4 – MAJOR HOWARD BEAL SCHOOL
- 5 – PARKER ROAD PRESCHOOL
- 6 – SPRING STREET SCHOOL
- 7 – FLORAL STREET SCHOOL
- 8 – SHERWOOD MIDDLE SCHOOL
- 9 – OAK MIDDLE SCHOOL
- 10 – SPS ADMINISTRATION

PROJECTED ENROLLMENT / SPACE NEEDS

- Calculation methodology based on:
 - Enrollment Forecasts
 - 2021/2031 McKibben Report
 - MSBA Space Summary Template
 - Pro-rated based on:
 - SPS classroom enrollment policy
 - SPS educational plan & pedagogy
 - Exclusion of portable/modular classrooms for all applicable options

ENROLLMENT

2022- 2023	2031- 2032	10-YR DELTA
---------------	---------------	----------------

PRE-K

PARKER ROAD	203	242	39
-------------	-----	------------	-----------

ELEMENTARY (K-4)

MAJOR HOWARD BEAL	609	548	(61)
CALVIN COOLIDGE	247	292	45
FLORAL STREET	520	510	(10)
SPRING STREET	308	303	(5)
WALTER J PATON	291	318	27

MIDDLE SCHOOL (5-8)

SHERWOOD (5-6)	948	820	(128)
OAK (7-8)	944	855	(89)

HIGH SCHOOL (9-12)

SHREWSBURY HIGH	1,821	1,749	(72)
-----------------	-------	--------------	-------------

DESIGN CAPACITY

- The student body population that a given school can support as it currently exists
- Calculated based on:
 - Current programmatic usage
 - SPS School Committee policy guidelines for class size
 - MSBA guidelines for classroom square footage sizes
- Portable/modular classroom square footage also excluded from this calculation

ENROLLMENT / DESIGN CAPACITY

	ENROLLMENT			DESIGN CAPACITY			
	2022-2023	2031-2032	10-YR DELTA	MIN.	MEAN	MAX.	10-YR DELTA*
PRE-K							
PARKER ROAD	203	242	39	--	--	--	--
ELEMENTARY (K-4)	1,975	1,971	(4)	1,806	1,896	1,988	(75)
MAJOR HOWARD BEAL	609	548	(61)	808	848	888	300
CALVIN COOLIDGE	247	292	45	190	200	210	(92)
FLORAL STREET	520	510	(10)	467	490	514	(20)
SPRING STREET	308	303	(5)	145	152	160	(151)
WALTER J PATON	291	318	27	196	206	216	(112)
MIDDLE SCHOOL (5-8)	1,892	1,675	(217)	1,578	1,651	1,722	(24)
SHERWOOD (5-6)	948	820	(128)	800	837	873	17
OAK (7-8)	944	855	(89)	778	814	849	(41)
HIGH SCHOOL (9-12)							
SHREWSBURY HIGH	1,821	1,749	(72)	1,185	1,250	1,316	(499)

*10-YR DESIGN CAPACITY DELTA = (MEAN DESIGN CAPACITY) - (2031-2032 ENROLLMENT)

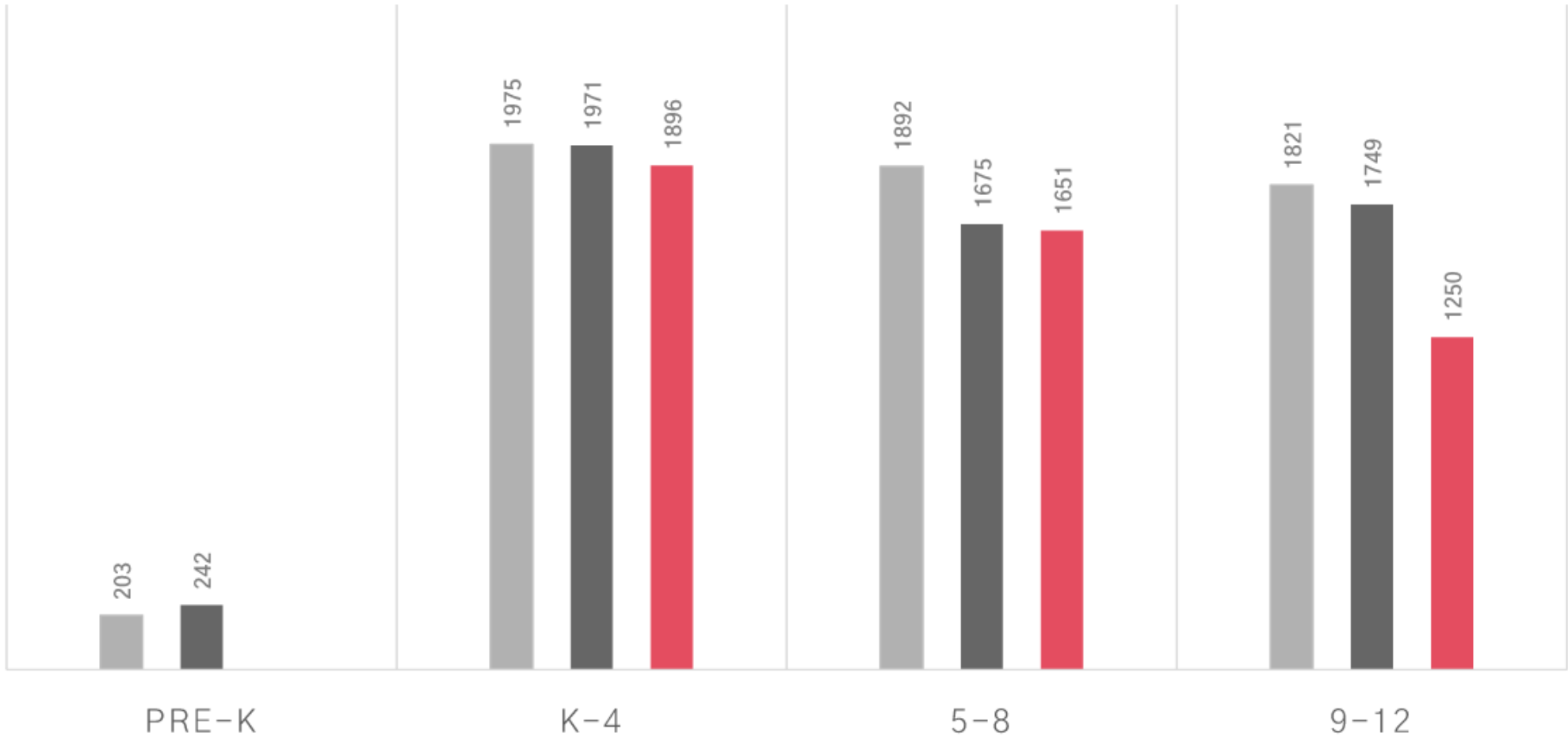
ENROLLMENT / DESIGN CAPACITY

	ENROLLMENT	DESIGN CAPACITY	
	2031-2032	MEAN	10-YR DELTA*
PRE-K			
PARKER ROAD	242	--	--
ELEMENTARY (K-4)	1,971	1,896	(75)
MAJOR HOWARD BEAL	548	848	300
CALVIN COOLIDGE	292	200	(92)
FLORAL STREET	510	490	(20)
SPRING STREET	303	152	(151)
WALTER J PATON	318	206	(112)
MIDDLE SCHOOL (5-8)	1,675	1,651	(24)
SHERWOOD (5-6)	820	837	17
OAK (7-8)	855	814	(41)
HIGH SCHOOL (9-12)			
SHREWSBURY HIGH	1,749	1,250	(499)

*10-YR DESIGN CAPACITY DELTA = (MEAN DESIGN CAPACITY) - (2031-2032 ENROLLMENT)

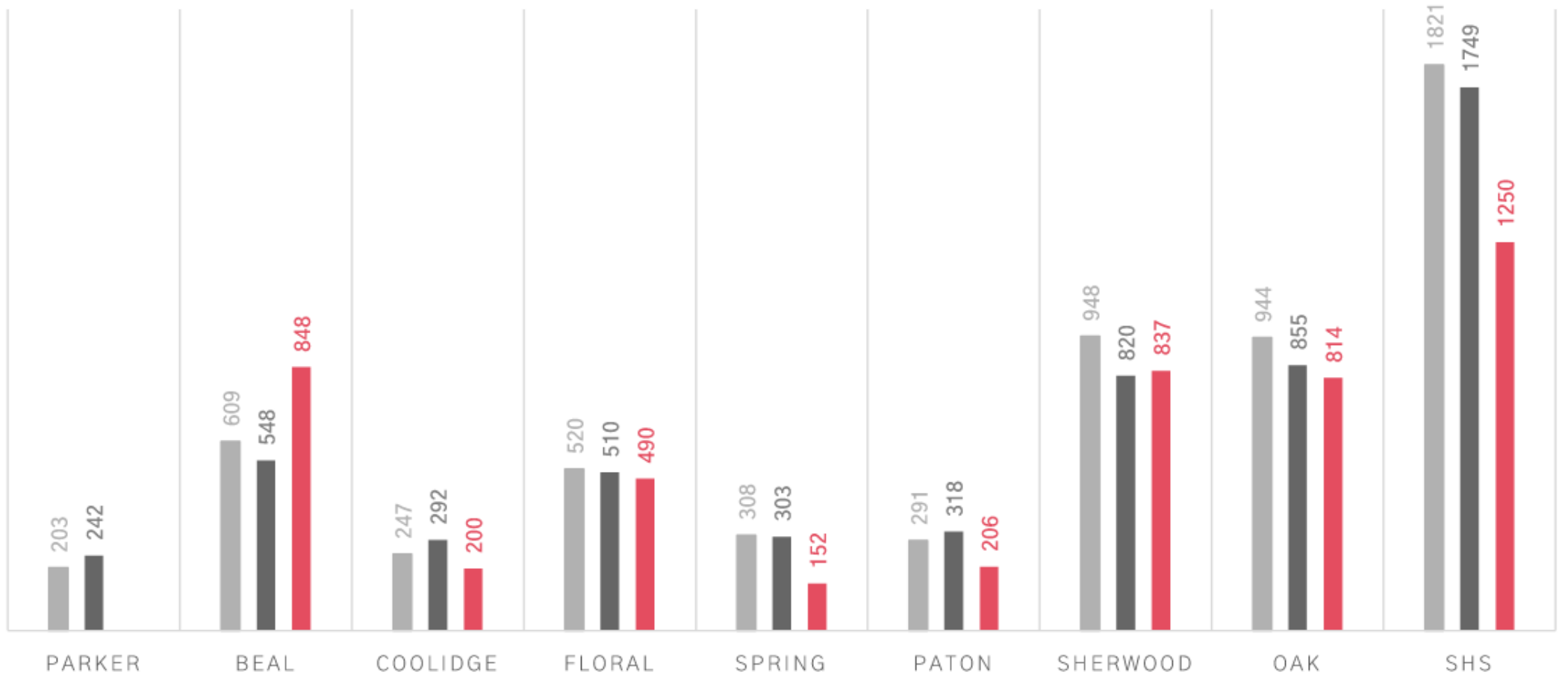
ENROLLMENT FORECAST VS DESIGN CAPACITY BY GRADE

■ 2022-2023 Enrollment ■ 2031-2032 Enrollment ■ Design Capacity



ENROLLMENT FORECAST VS DESIGN CAPACITY BY SCHOOL

■ 2022-2023 Enrollment ■ 2031-2032 Enrollment ■ Design Capacity



BUILDING ASSESSMENTS



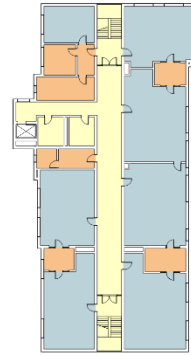
COOLIDGE (K-4)



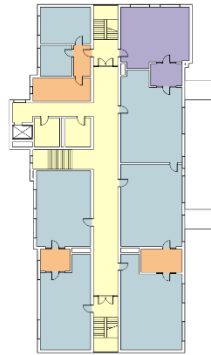
SCHOOL YEAR	TOTAL ENROLLMENT (K-4)	CHANGE
2022-23	247	—
2031-32	292	45
*Design Capacity	200	(92)

Enrollment numbers taken from “Population and Enrollment Forecasts, 2022-23 Through 2031-32” by McKibben Demographic Research, March 2022; see Appendix for full report.

*Design Capacity refers to the mean student body population that a given school can support as it currently exists. Mean value is calculated based on the SPS School Committee policy guidelines for class size, as well as MSBA guidelines for classroom square footage size. Note that portable classroom square footage is excluded from this calculation. See Educational Review Introduction for the calculation methodology.



SECOND FLOOR PLAN



FIRST FLOOR PLAN

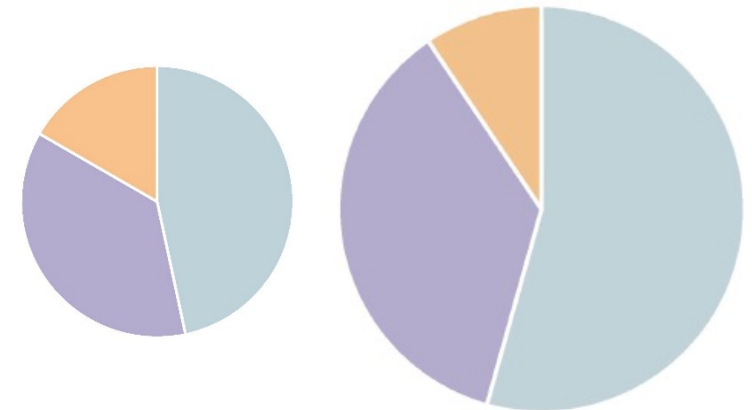


GROUND FLOOR PLAN

SPACE TYPE	EXISTING SQFT (GROSS GF = 1.5)	MSBA GUIDELINE SQFT (GROSS GF=1.5)	DEFICIENCY
CLASSROOMS * Excludes portable classroom square footage.	16,207	30,900	(14,693)
SPECIAL EDUCATION	5,230	8,183	(2,953)
ACADEMIC TOTAL	21,437	39,083	(17,646)
ART & MUSIC	2,496	3,750	(1,254)
HEALTH & PHYSICAL EDUCATION	6,193	11,475	(5,282)
MEDIA CENTER	2,468	3,030	(562)
DINING & FOOD SERVICE	5,692	7,785	(2,093)
CORE TOTAL	16,850	26,040	(9,190)
MEDICAL	415	915	(500)
ADMINISTRATION & GUIDANCE	5,361	3,023	2,338
CUSTODIAL & MAINTENANCE	1,872	2,850	(978)
ADMINISTRATIVE TOTAL	7,647	6,788	860
TOTAL GROSS FLOOR AREA	45,934	71,910	(25,976)

LEGEND

- ACADEMIC SPACES
- CORE SPACES
- ADMINISTRATIVE SPACES



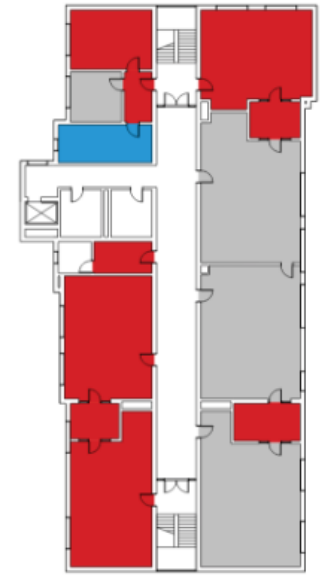
COOLIDGE (K-4)



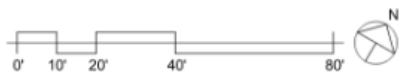
FIRST FLOOR PLAN







SECOND FLOOR PLAN



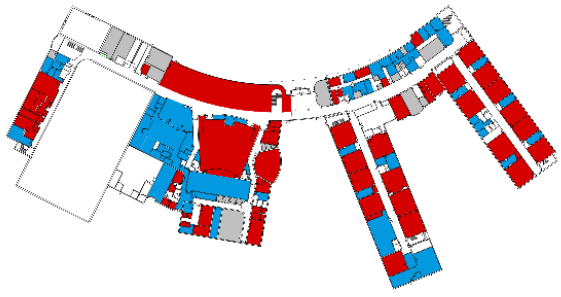
THIRD FLOOR PLAN



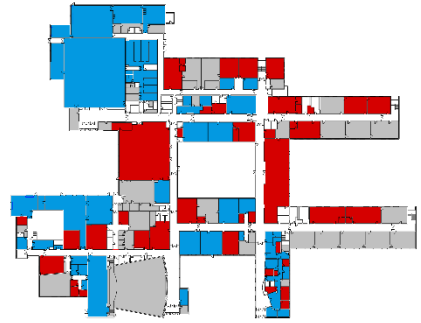
LEGEND

-  10% OVER MSBA GUIDELINES
-  MEETS MSBA GUIDELINES
-  10% UNDER MSBA GUIDELINES
-  MODULAR/PORTABLE

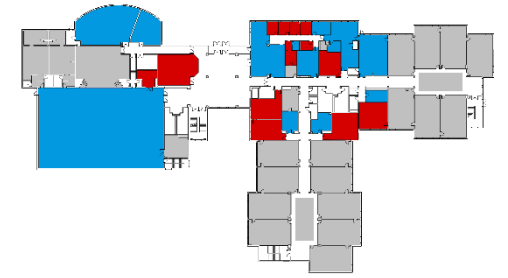
SCHOOL PLANS



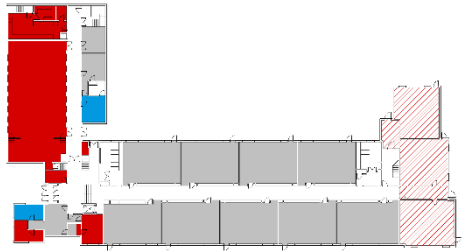
SHREWSBURY HIGH SCHOOL



OAK MIDDLE SCHOOL



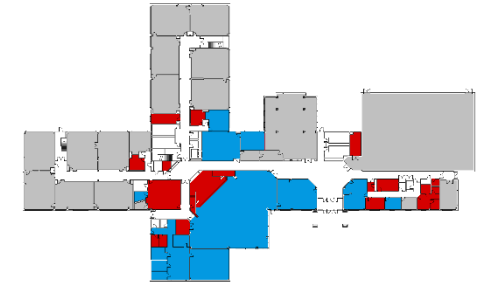
SHERWOOD MIDDLE SCHOOL



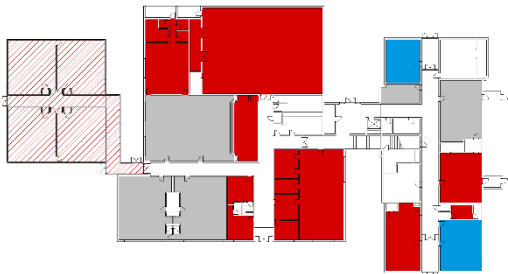
SPRING STREET SCHOOL



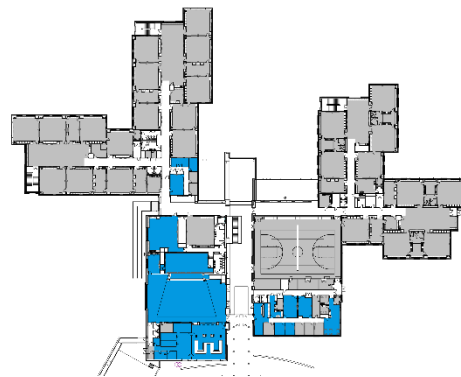
WALTER J. PATON SCHOOL



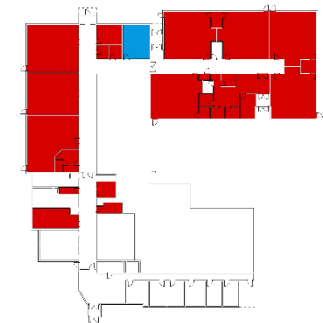
FLORAL STREET SCHOOL



CALVIN COOLIDGE SCHOOL



MAJ. HOWARD W. BEAL SCHOOL



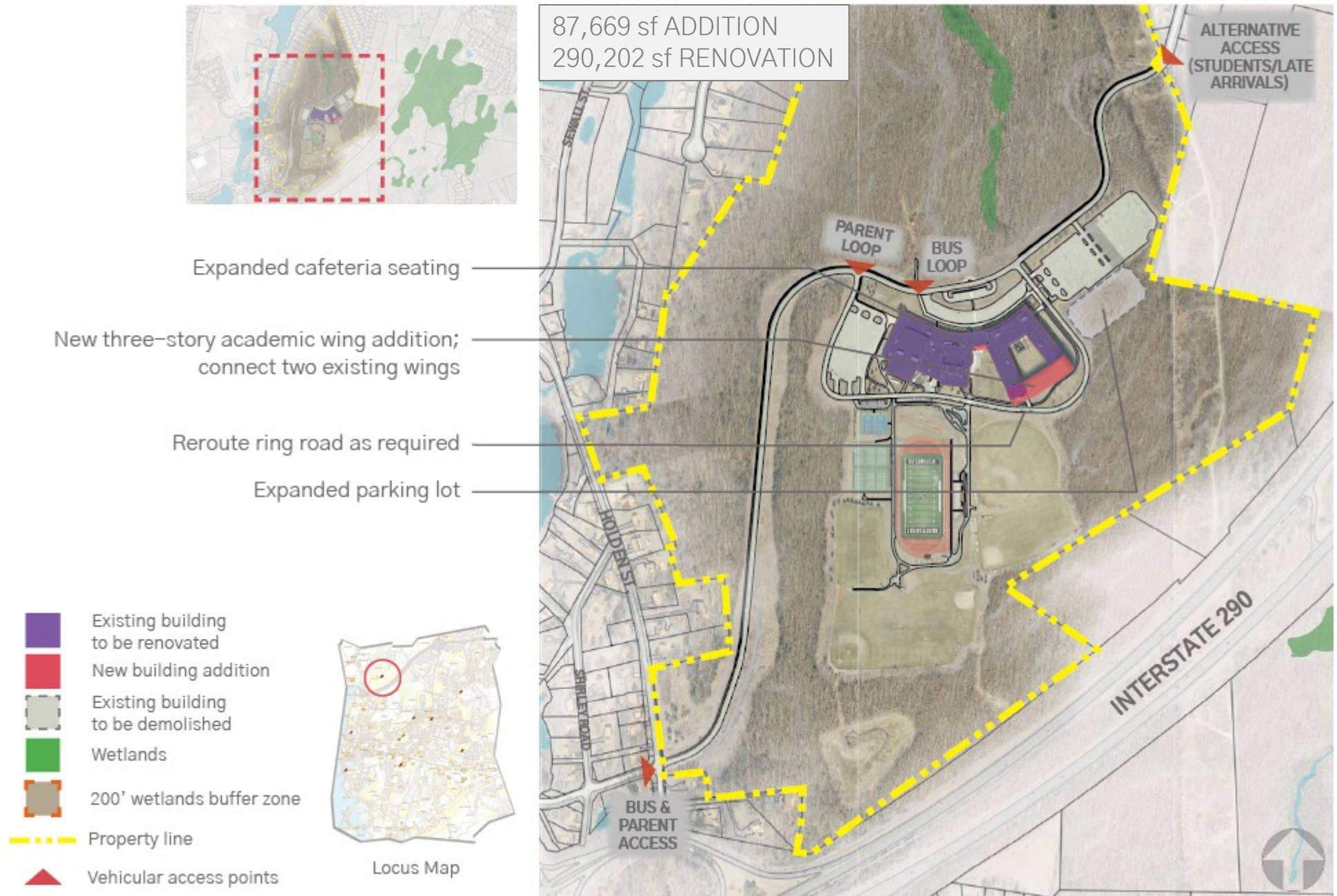
PARKER ROAD PRESCHOOL

PRIORITIES

- Address Overcrowding at the High School
- Replace Coolidge Elementary School & Expand District Wide Pre-K
- Parity Among the K-4 Schools
- Address Aging Building Stock & Provide 21st Century Learning Spaces
- Net Zero Upgrades
- Provide Air Conditioning for Equity Across the District
- Unify School Department Administration

HIGH SCHOOL (1749)

ADDITION & RENOVATION



BUDGET DEVELOPMENT METHODOLOGY

- 2024 Unit pricing
- New Construction vs Addition/Renovation
 - Tier I vs Tier II renovations
 - Tier I: major interior renovation, envelope improvements
 - Tier II: minor interior remodel (no space reconfiguration)
- Systems Upgrades
 - Add air conditioning – all buildings
- Net Zero Upgrades
 - Improvements to building systems included in base numbers
 - PV array costs listed separately from total budget numbers
- All budgets included in the presentation are Construction Cost Only

OPTIONS

- FEASIBLE
- ◐ MARGINAL

PRE-K

PARKER ROAD

ELEMENTARY (K-4)

MAJOR HOWARD BEAL

CALVIN COOLIDGE

FLORAL STREET

SPRING STREET

WALTER J PATON

MIDDLE SCHOOL (5-8)

SHERWOOD

OAK

HIGH SCHOOL (9-12)

SHREWSBURY HIGH

REMOVE MODULARS
& REDISTRIBUTE

ADDITION/RENOVATION
AT 10-YR. ENROLLMENT

ADDITION/RENOVATION
FOR PRE-K FACILITY

(+/-) 242 PRE-K
STUDENTS

(+/-) 375 PRE-K
STUDENTS

(+/-) 300 ELEM.
STUDENTS

(+/-) 600 ELEM.
STUDENTS

(+/-) 300 ELEM. +
300 PRE-K STUD.

NEW SCHOOL
ON
ALT. SITE

(+/-) 300
STUDENTS

(+/-) 600
STUDENTS

NEW SCHOOL
ON
EXISTING SITE

- ◐
-
- ◐
-
- ◐
-

- ◐
-
-
-
-
-

-
-
-
-
-
-

-
-
-
-
-
- ◐

-
-
-
-
- ◐
-

-
-
-
-
-
-

-
-
-
-
-
-

-
-
-
-
-
-

-

○ MARGINAL



ADD/RENO OPTIONS

FLORAL STREET SCHOOL

● FEASIBLE

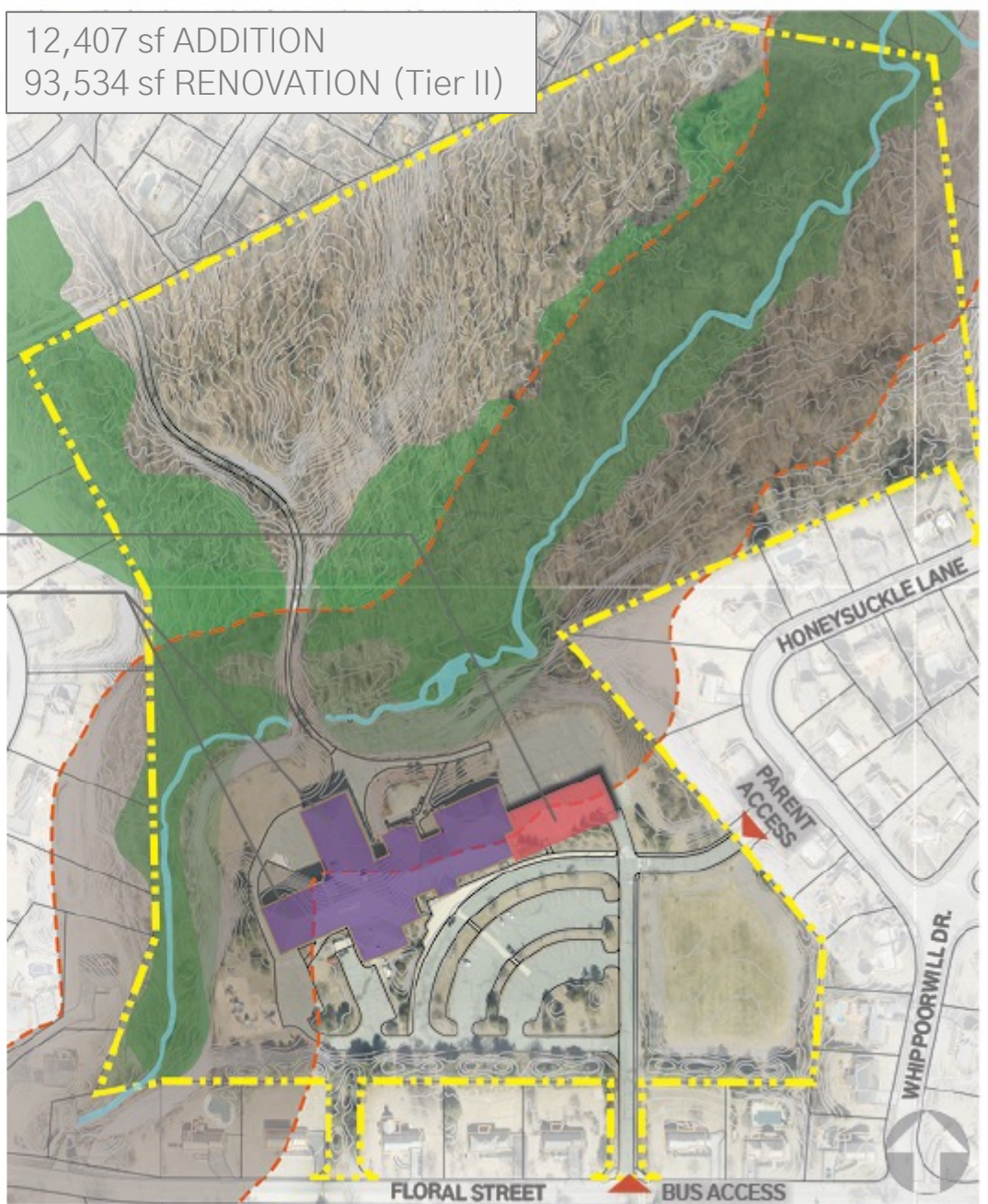
New kindergarten wing addition (6 classrooms)

Reallocate existing kindergarten classrooms to alleviate programmatic deficiencies; reallocate excess classrooms for common areas in each academic wing

- Existing building to be renovated
- New building addition
- Existing building to be demolished
- Wetlands
- 200' wetlands buffer zone
- Property line
- ▲



Locus Map



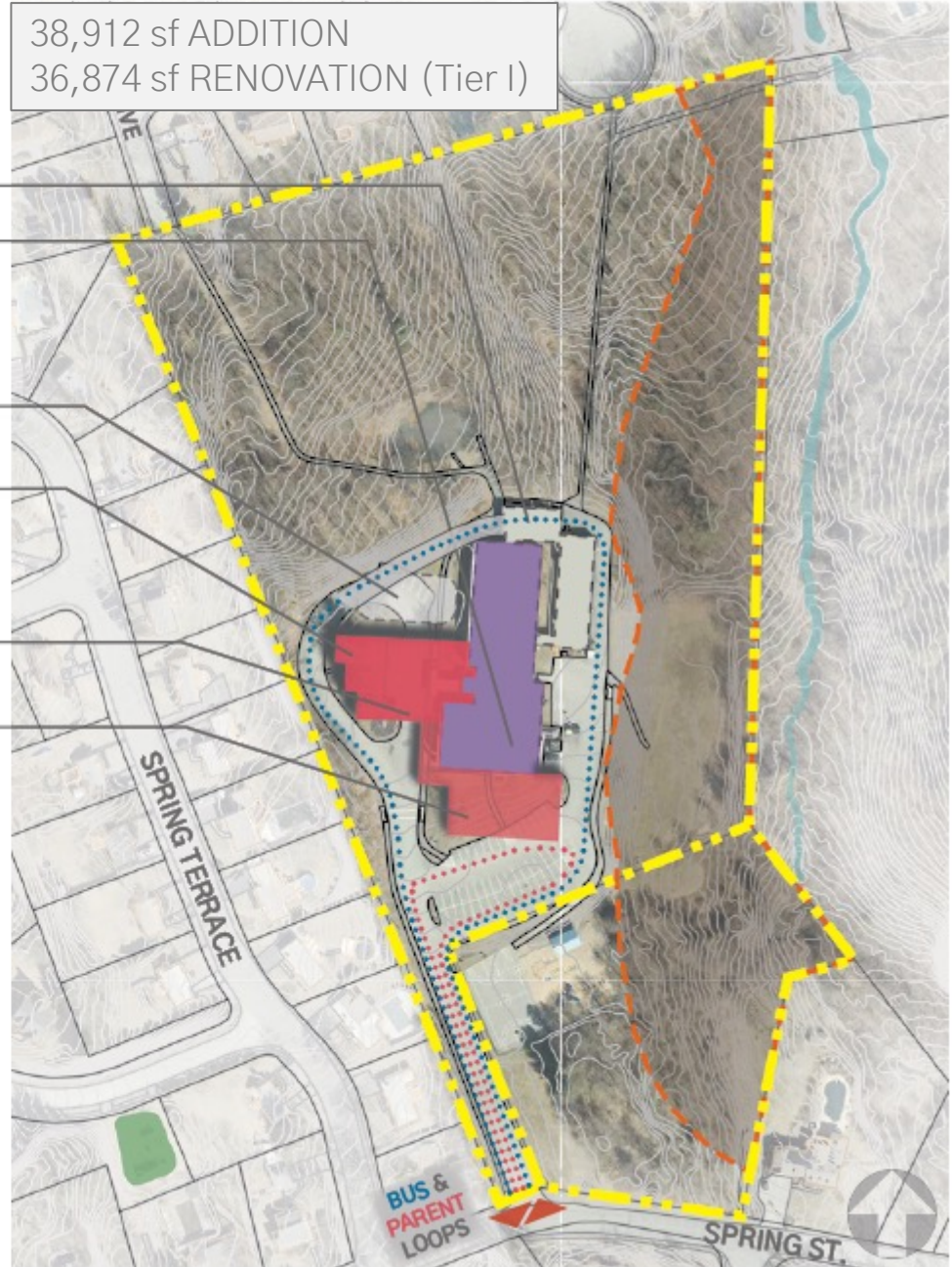
ADD/RENO OPTIONS

SPRING STREET SCHOOL

● FEASIBLE

- Demolish portable classrooms
- Repurpose existing gymnasium for media center, OT/PT classrooms, and/or music/art; extend new corridor to connect to new gymnasium and academic wing; expand cafeteria/kitchen
- New kindergarten rooms in new wing; add new play area adjacent
- New two-story academic wing; abandon bus turnaround in lieu of new ring road traversing entire building
- Reconfigure entry sequence for direct line of sight from relocated/expanded administrative suite
- New gymnasium

-  Existing building to be renovated
-  New building addition
-  Existing building to be demolished
-  Wetlands
-  200' wetlands buffer zone
-  Property line
-  Vehicular access points



ADD/RENO OPTIONS

WALTER J. PATON SCHOOL



MARGINAL

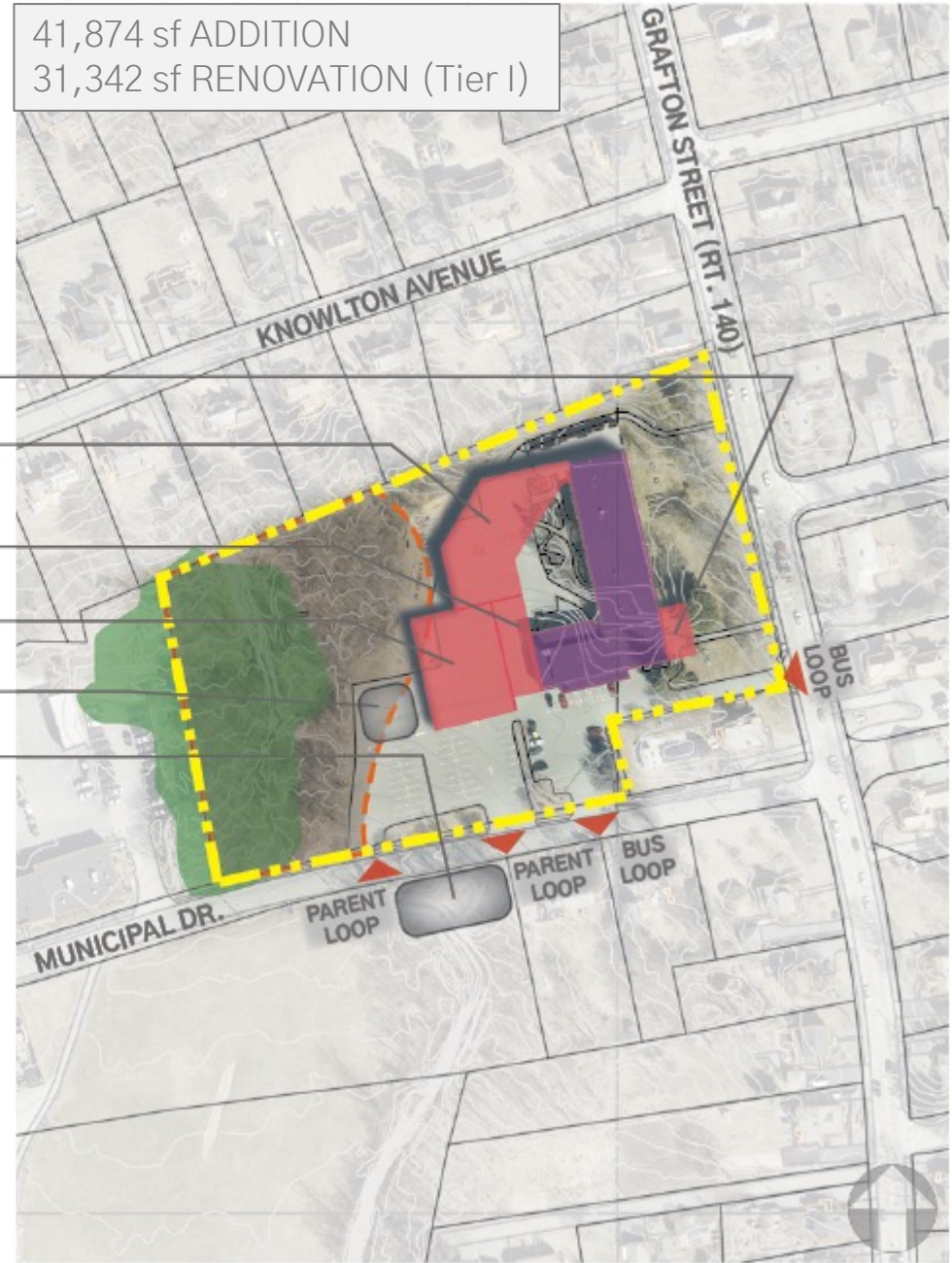
41,874 sf ADDITION
31,342 sf RENOVATION (Tier I)

- New administrative suite addition
- Demolish portable classrooms and add new two-story academic wing with media center onto existing building
- Expanded kitchen & custodial spaces
- New gymnasium with storage & office
- Expanded parking option
- Expanded parking option (across Municipal Drive)

- Existing building to be renovated
- New building addition
- Existing building to be demolished
- Wetlands
- 200' wetlands buffer zone
- Property line
- Vehicular access points



Locus Map



OPTIONS

- FEASIBLE
- ◐ MARGINAL

PRE-K

PARKER ROAD

ELEMENTARY (K-4)

MAJOR HOWARD BEAL

CALVIN COOLIDGE

FLORAL STREET

SPRING STREET

WALTER J PATON

	REMOVE MODULARS & REDISTRIBUTE	ADDITION/RENOVATION AT 10-YR. ENROLLMENT	ADDITION/RENOVATION FOR PRE-K FACILITY	NEW SCHOOL ON EXISTING SITE			NEW SCHOOL ON ALT. SITE	
				(+/-) 242 PRE-K STUDENTS	(+/-) 375 PRE-K STUDENTS	(+/-) 300 ELEM. STUDENTS	(+/-) 600 ELEM. STUDENTS	(+/-) 300 ELEM. + 300 PRE-K STUD.
PARKER ROAD				●	●	●	◐	
MAJOR HOWARD BEAL								
CALVIN COOLIDGE	◐	◐	◐			●	●	●
FLORAL STREET	●	●	●			●	●	●
SPRING STREET	◐	●	●			●	◐	●
WALTER J PATON	◐	◐	●	●		◐		●

PRE-K OPTIONS

WALTER J. PATON SCHOOL - ADD/RENO

● FEASIBLE

- Expanded administrative suite
- Demolish portable classrooms and replace with new two-story academic wing
- New paved play yard
- Renovate existing academic wing for preschool classrooms with shared restrooms
- Renovate existing cafegymnasium for a new gross motor room
- New single-story classroom wing
- Expanded parking
- Expanded parking option (across Municipal Drive)

-  Existing building to be renovated
-  New building addition
-  Existing building to be demolished
-  Wetlands
-  200' wetlands buffer zone
-  Property line
-  Vehicular access points



Locus Map



OPTIONS

- FEASIBLE
- ◐ MARGINAL

PRE-K

PARKER ROAD

ELEMENTARY (K-4)

MAJOR HOWARD BEAL

CALVIN COOLIDGE

FLORAL STREET

SPRING STREET

WALTER J PATON

	REMOVE MODULARS & REDISTRIBUTE	ADDITION/RENOVATION AT 10-YR. ENROLLMENT	ADDITION/RENOVATION FOR PRE-K FACILITY	NEW SCHOOL ON EXISTING SITE				NEW SCHOOL ON ALT. SITE		
				(+/-) 242 PRE-K STUDENTS	(+/-) 375 PRE-K STUDENTS	(+/-) 300 ELEM. STUDENTS	(+/-) 600 ELEM. STUDENTS	(+/-) 300 ELEM. + 300 PRE-K STUD.	(+/-) 300 STUDENTS	(+/-) 600 STUDENTS
PARKER ROAD				●	●	●	◐		●	●
MAJOR HOWARD BEAL										
CALVIN COOLIDGE	◐	◐	◐			●	●	●	●	●
FLORAL STREET	●	●	●			●	●		●	●
SPRING STREET	◐	●	●			●	◐		●	●
WALTER J PATON	◐	◐	●	●		◐			●	●

PRE-K OPTIONS

PARKER ROAD PRESCHOOL - NEW CONST.

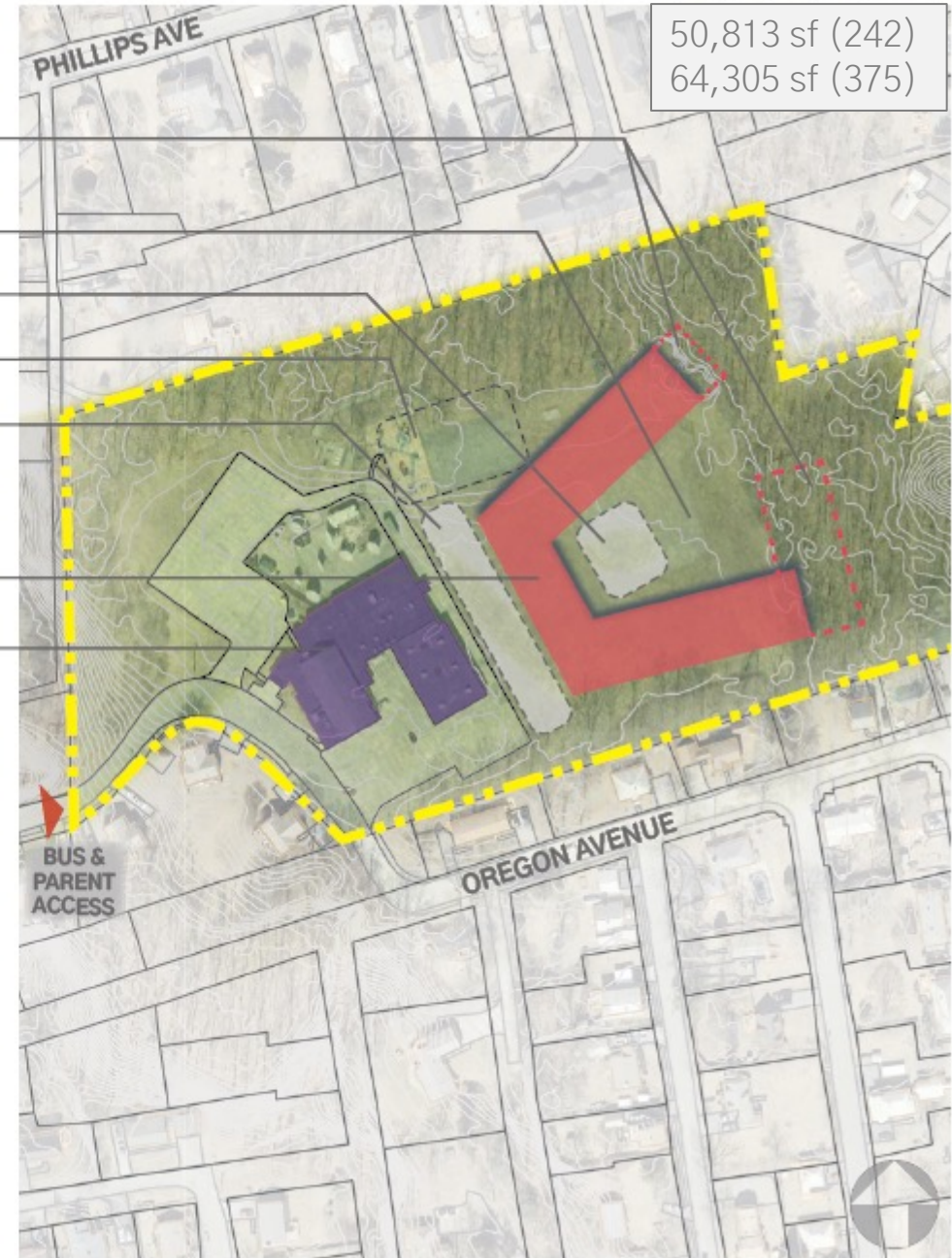
● FEASIBLE

- Potential future expansion for a 375-student population
- New play field
- New paved play area
- Existing play area to remain
- Expanded parking lot & bus loop
- New one-story preschool for 242 students
- Existing building to remain; reallocate for municipal use

-  Existing building to be renovated
-  New building addition
-  Existing building to be demolished
-  Wetlands
-  200' wetlands buffer zone
-  Property line
-  Vehicular access points









Locus Map



PRE-K OPTIONS

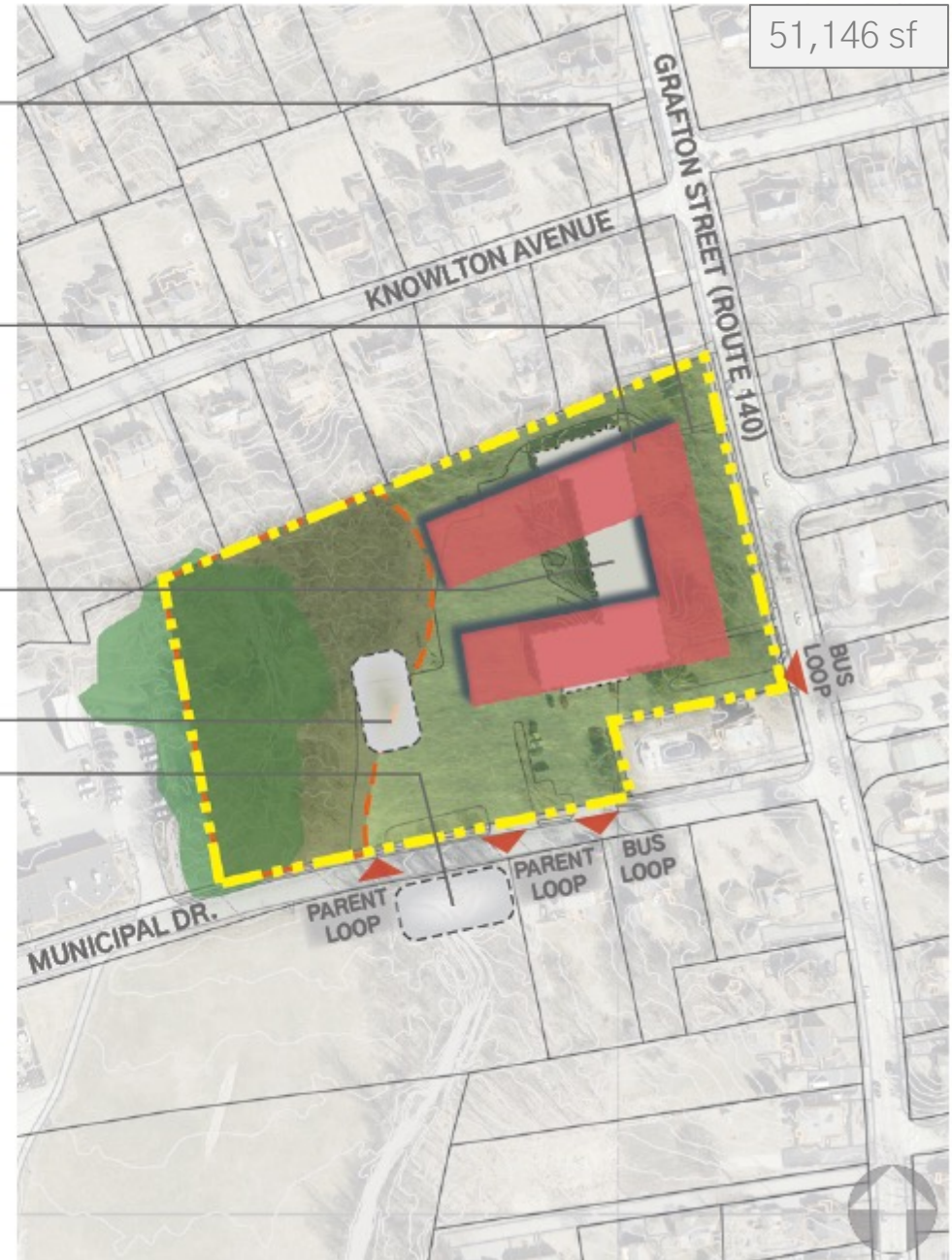
WALTER J. PATON SCHOOL - NEW CONST.

● FEASIBLE

- Maintain 50'-0" front yard setback
 - New single-story preschool building
 - Demolish school in its entirety; elementary student population to permanently transfer to Beal
 - Expanded parking
 - Expanded parking option (across Municipal Road)
-  New building
 -  Existing building to be demolished
 -  Wetlands
 -  200' wetlands buffer zone
 -  Property line
 -  Vehicular access points



Locus Map



OPTIONS

- FEASIBLE
- ◐ MARGINAL

PRE-K

PARKER ROAD

ELEMENTARY (K-4)

MAJOR HOWARD BEAL

CALVIN COOLIDGE

FLORAL STREET

SPRING STREET

WALTER J PATON

	REMOVE MODULARS & REDISTRIBUTE	ADDITION/RENOVATION AT 10-YR. ENROLLMENT	ADDITION/RENOVATION FOR PRE-K FACILITY	NEW SCHOOL ON EXISTING SITE			NEW SCHOOL ON ALT. SITE	
				(+/-) 242 PRE-K STUDENTS	(+/-) 375 PRE-K STUDENTS	(+/-) 300 ELEM. STUDENTS	(+/-) 600 ELEM. STUDENTS	(+/-) 300 ELEM. + 300 PRE-K STUD.
PARKER ROAD				●	●	●	◐	
MAJOR HOWARD BEAL								
CALVIN COOLIDGE	◐	◐	◐			●	●	●
FLORAL STREET	●	●	●			●	●	●
SPRING STREET	◐	●	●			●	◐	●
WALTER J PATON	◐	◐	●	●	◐	◐	●	●

NEW CONST. OPTIONS (300)

PARKER ROAD PRESCHOOL SITE

● FEASIBLE

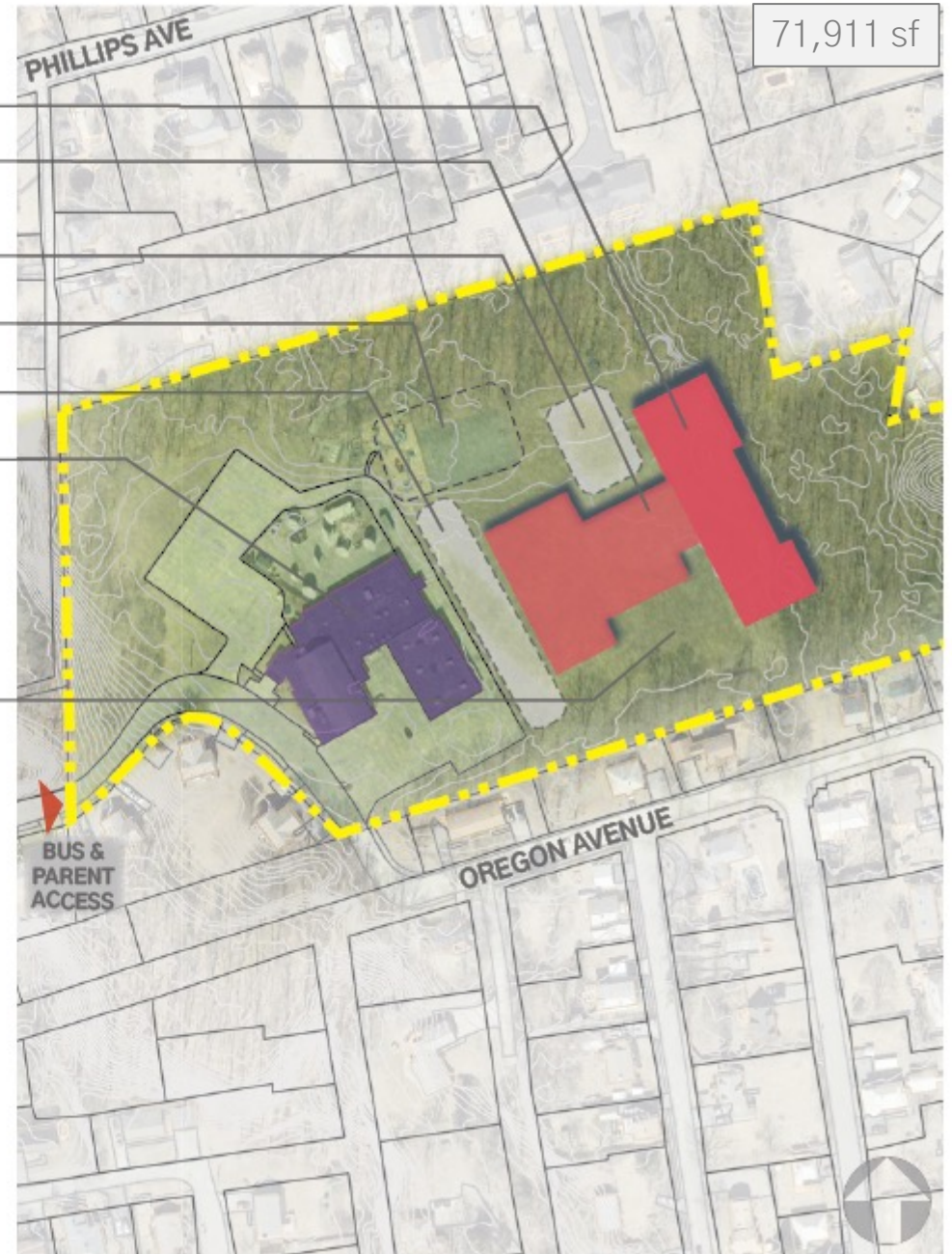
- New two-story academic wing
- New one-story gymnasium/cafeteria/administrative wing
- New paved play area
- Existing play area to remain
- Expanded parking lot & bus loop
- Existing building to remain; reallocate for municipal use

New play field

- Existing building to be renovated
- New building
- Existing building to be demolished
- Wetlands
- 200' wetlands buffer zone
- Property line
- Vehicular access points



Locus Map



NEW CONST. OPTIONS (300)

CALVIN COOLIDGE SCHOOL SITE



FEASIBLE

Hatched areas indicate town-owned land to add (change from playground to school use)

New play field

New paved play area

New two-story academic wing

New one-story gymnasium/cafeteria/administrative wing

Demolish school in its entirety; student population to temporarily transfer to Beal during construction; create new expanded parking lot & reconfigured bus turnaround

-  New building
-  Existing building to be demolished
-  Wetlands
-  200' wetlands buffer zone
-  Property line
-  Vehicular access points



Locus Map



NEW CONST. OPTIONS (300)

SPRING STREET SCHOOL SITE

● FEASIBLE

Demolish school in its entirety; student population to temporarily transfer to Beal during construction

New two-story academic wing with media center

Kindergarten play area

New one-story gymnasium/cafeteria/administrative wing

Revise rotary for bus loop

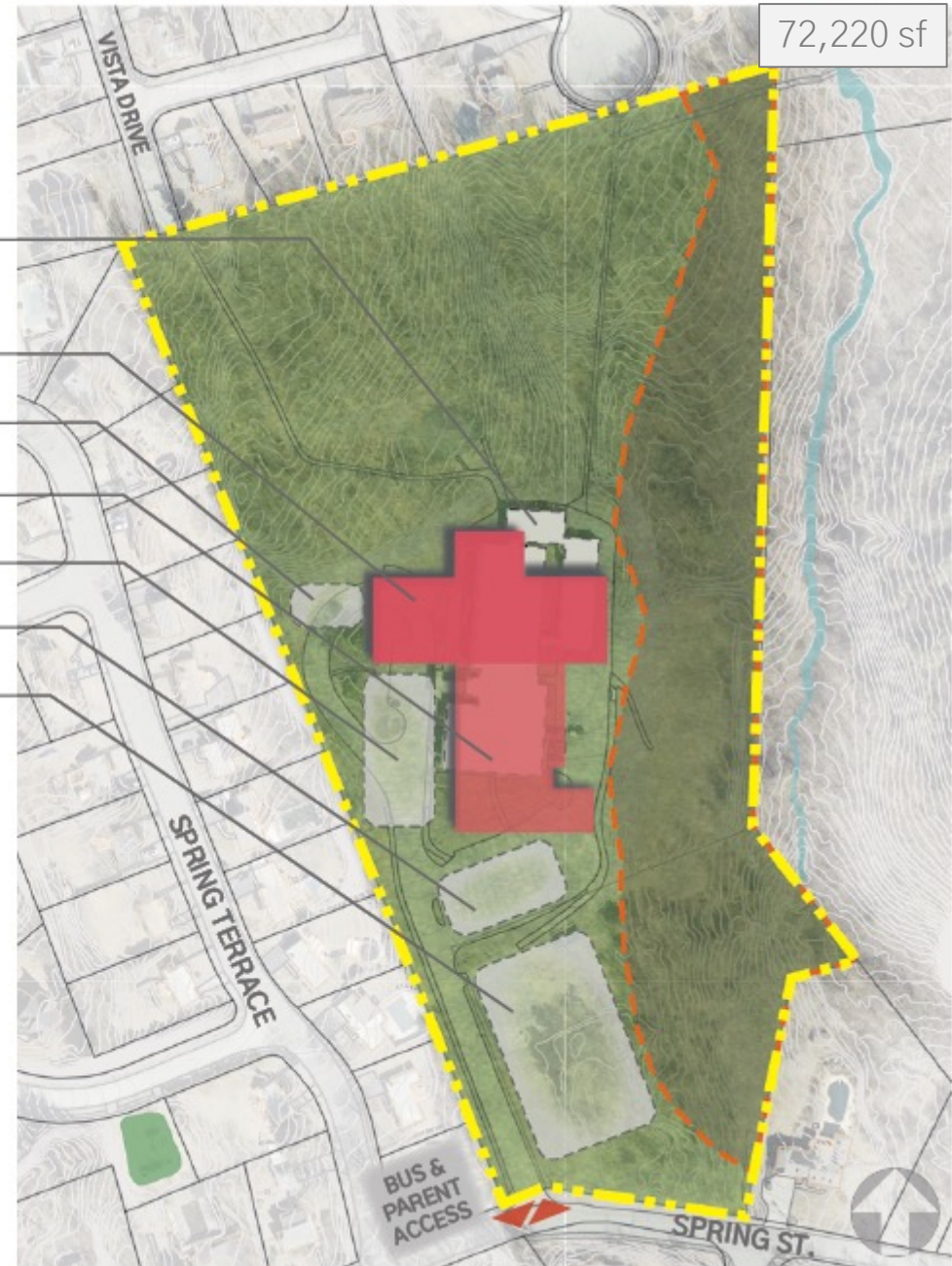
Relocate play area adjacent to school

Expand parking lot; parent loop to occur in new lower parking lot

-  New building
-  Existing building to be demolished
-  Wetlands
-  200' wetlands buffer zone
-  Property line
-  Vehicular access points



Locus Map



NEW CONST. OPTIONS (300)

WALTER J. PATON SCHOOL SITE



MARGINAL

Maintain 50'-0" front yard setback

New two-story academic wing

New paved play yard

New one-story gymnasium/cafeteria/administrative wing (review wetland no-build restrictions)

Demolish school in its entirety; student population to temporarily transfer to Beal during construction

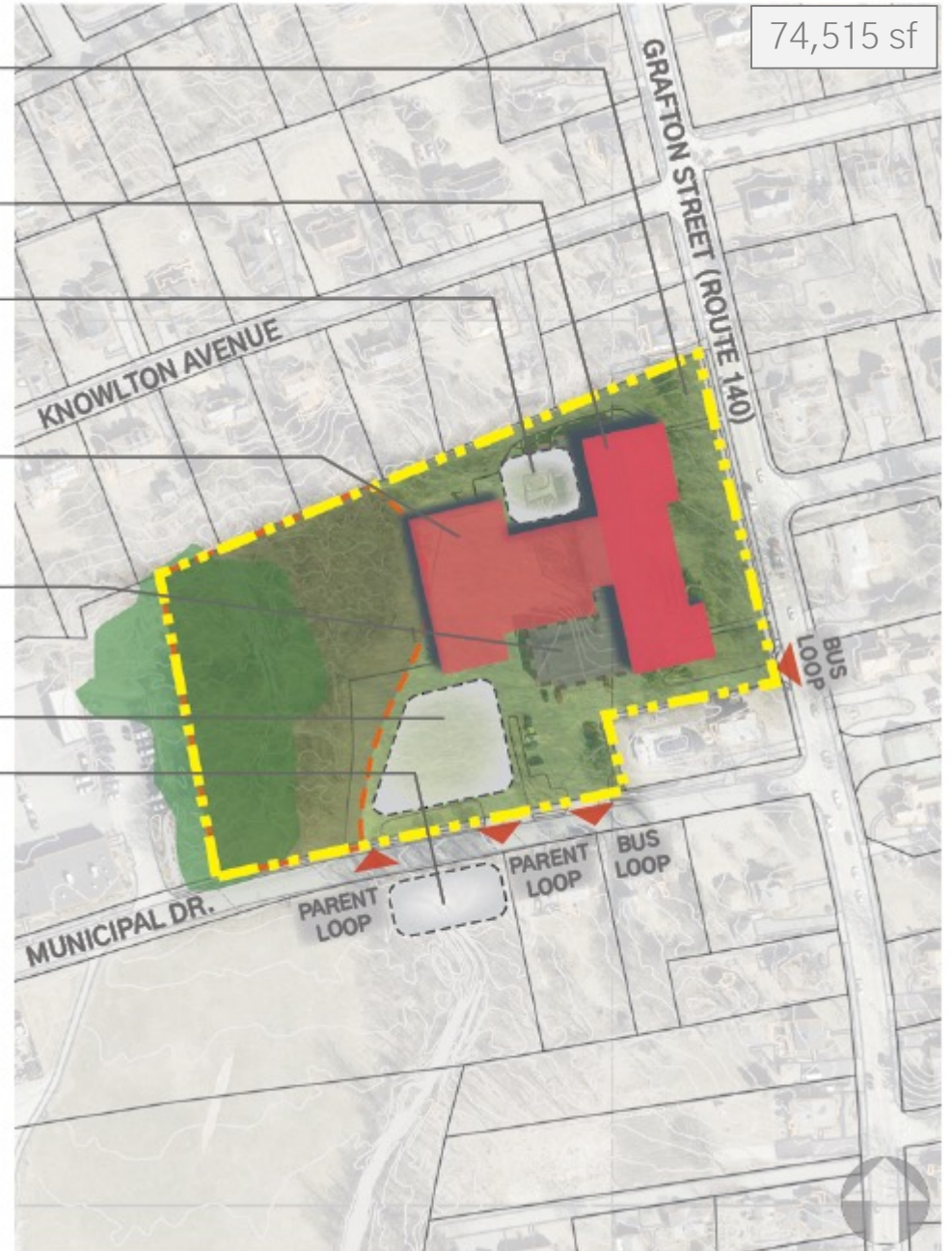
Expanded parking; maintain existing parent loop

Expanded parking option (across Municipal Drive)

- New building
- Existing building to be demolished
- Wetlands
- 200' wetlands buffer zone
- Property line
- Vehicular access points



Locus Map



OPTIONS

- FEASIBLE
- ◐ MARGINAL

PRE-K

PARKER ROAD

ELEMENTARY (K-4)

MAJOR HOWARD BEAL

CALVIN COOLIDGE

FLORAL STREET

SPRING STREET

WALTER J PATON

	REMOVE MODULARS & REDISTRIBUTE	ADDITION/RENOVATION AT 10-YR. ENROLLMENT	ADDITION/RENOVATION FOR PRE-K FACILITY	NEW SCHOOL ON EXISTING SITE			NEW SCHOOL ON ALT. SITE	
				(+/-) 242 PRE-K STUDENTS	(+/-) 375 PRE-K STUDENTS	(+/-) 300 ELEM. STUDENTS	(+/-) 600 ELEM. STUDENTS	(+/-) 300 ELEM. + 300 PRE-K STUD.
PARKER ROAD				●	●	●	◐	
MAJOR HOWARD BEAL								
CALVIN COOLIDGE	◐	◐	◐			●	●	●
FLORAL STREET	●	●	●			●	●	●
SPRING STREET	◐	●	●			●	◐	●
WALTER J PATON	◐	◐	●	●		◐	●	●

NEW CONST. OPTIONS (600)

PARKER ROAD PRESCHOOL SITE



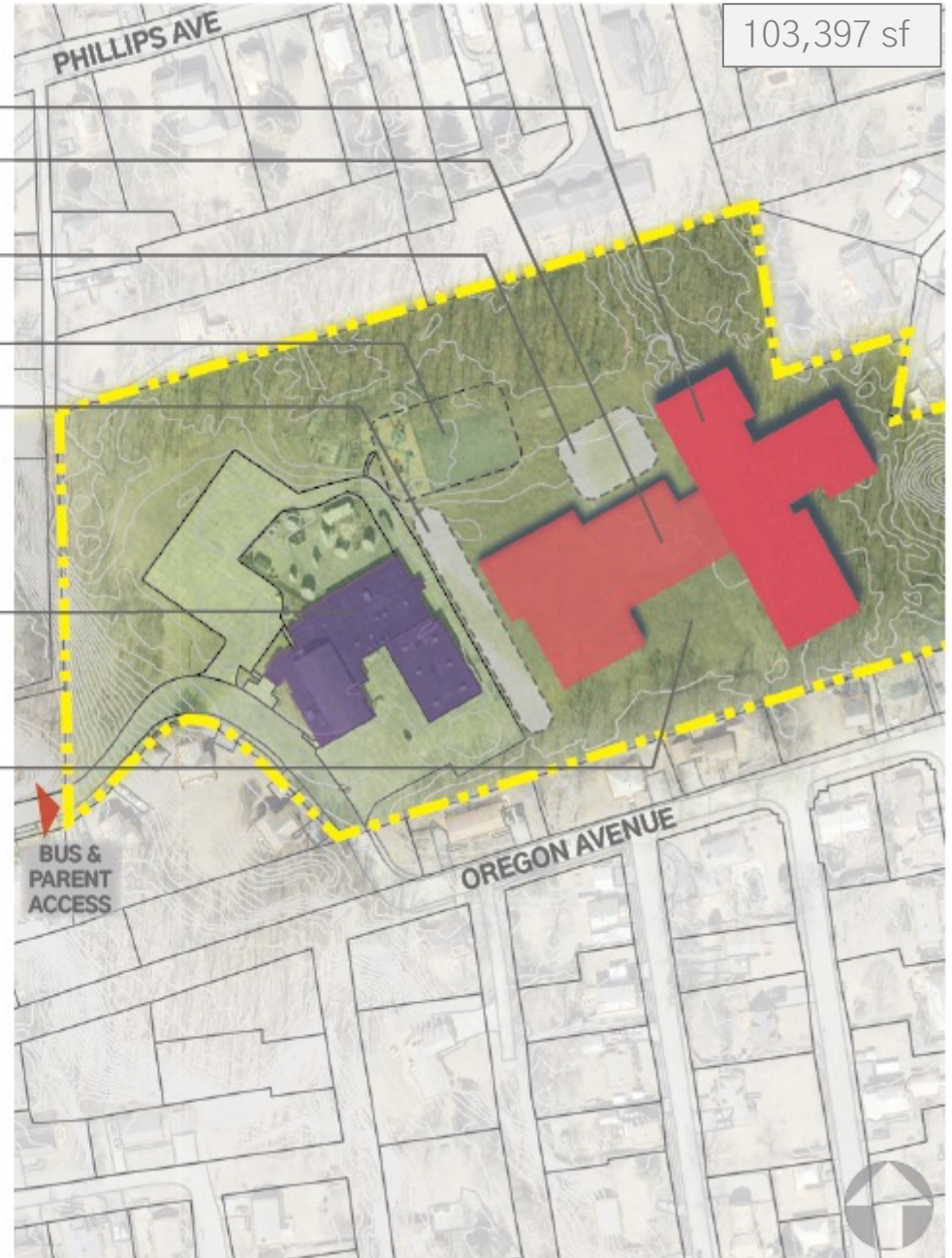
MARGINAL

- New two-story academic wing
- New one-story gymnasium/cafeteria/administrative wing
- New paved play area
- Existing play area to remain
- Expanded parking lot & bus loop
- Existing building to remain; reallocate for municipal use
- New play field

- Existing building to be renovated
- New building
- Existing building to be demolished
- Wetlands
- 200' wetlands buffer zone
- Property line
- Vehicular access points



Locus Map



NEW CONST. OPTIONS (600)

CALVIN COOLIDGE SCHOOL SITE



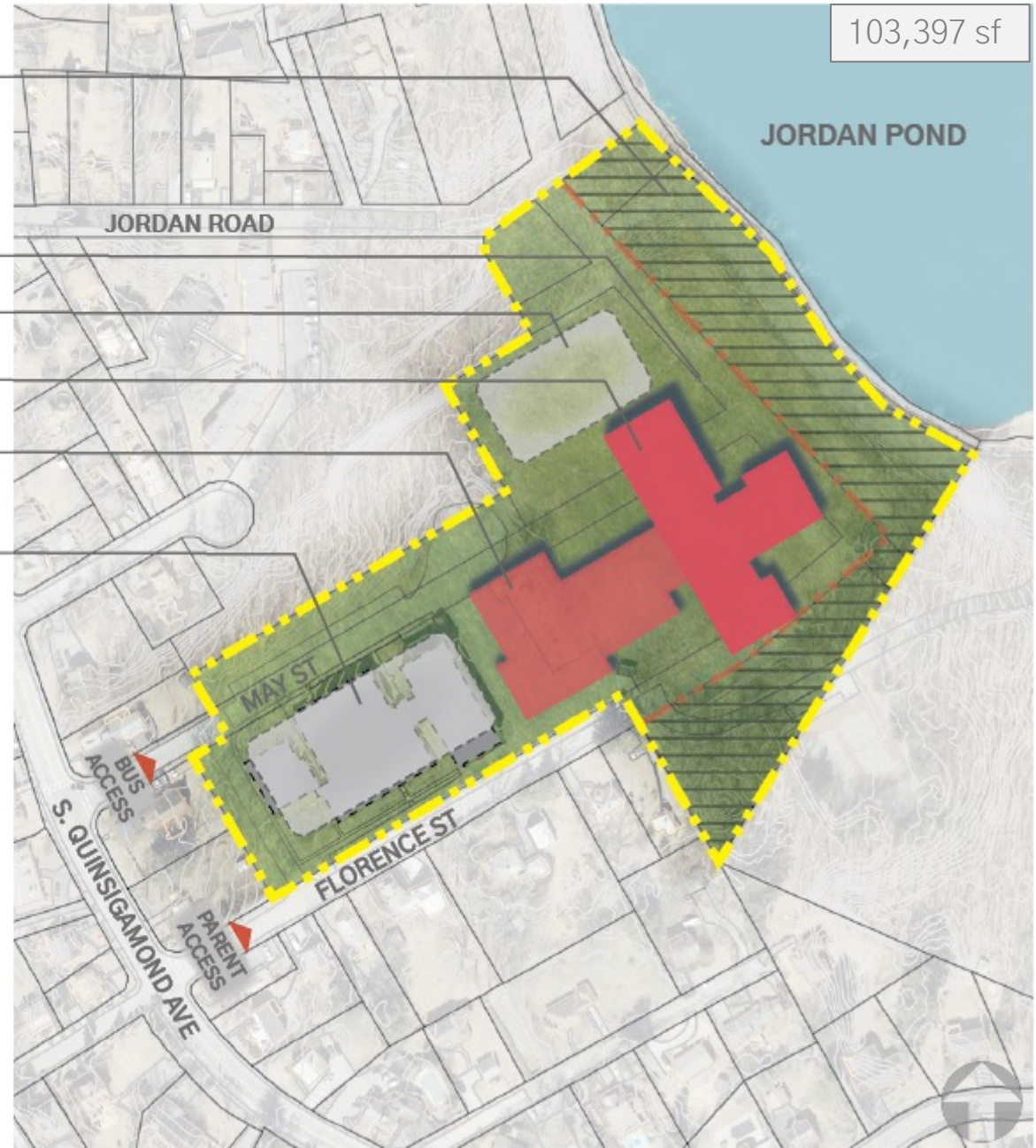
FEASIBLE

- Hatched areas indicate town-owned land to add (change from playground to school use)
- New play field
- New paved play area
- New two-story academic wing
- New one-story gymnasium/cafeteria/administrative wing
- Demolish school in its entirety; student population to temporarily transfer to Beal during construction; add new expanded parking lot & reconfigured bus turnaround

- New building
- Existing building to be demolished
- Wetlands
- 200' wetlands buffer zone
- Property line
- Vehicular access points



Locus Map



NEW CONST. OPTIONS (600)

SPRING STREET SCHOOL SITE



MARGINAL

- Demolish school in its entirety; student population to temporarily transfer to Beal during construction
- New three-story academic wing addition
- Kindergarten play area
- New one-story gymnasium/cafeteria/administrative wing
- Revise rotary for bus loop
- Relocate play area adjacent to building
- Expand parking lot; parent loop to occur in new lower parking lot

- New building
- Existing building to be demolished
- Wetlands
- 200' wetlands buffer zone
- Property line
- Vehicular access points



Locus Map



OPTIONS

- FEASIBLE
- ◐ MARGINAL

PRE-K

PARKER ROAD

ELEMENTARY (K-4)

MAJOR HOWARD BEAL

CALVIN COOLIDGE

FLORAL STREET

SPRING STREET

WALTER J PATON

	REMOVE MODULARS & REDISTRIBUTE	ADDITION/RENOVATION AT 10-YR. ENROLLMENT	ADDITION/RENOVATION FOR PRE-K FACILITY	NEW SCHOOL ON EXISTING SITE				NEW SCHOOL ON ALT. SITE		
				(+/-) 242 PRE-K STUDENTS	(+/-) 375 PRE-K STUDENTS	(+/-) 300 ELEM. STUDENTS	(+/-) 600 ELEM. STUDENTS	(+/-) 300 ELEM. + 300 PRE-K STUD.	(+/-) 300 STUDENTS	(+/-) 600 STUDENTS
PARKER ROAD				●	●	●	◐		●	●
MAJOR HOWARD BEAL								●	●	●
CALVIN COOLIDGE	◐	◐	◐			●	●	●	●	●
FLORAL STREET	●	●	●			●	◐		●	●
SPRING STREET	◐	●	●			●	◐	●	●	●
WALTER J PATON	◐	◐	●	●		◐		●	●	●

PRE-K OPTIONS (542)

CALVIN COOLIDGE SCHOOL - NEW CONST.



FEASIBLE

Hatched areas indicate town-owned land to add (change from playground to school use)

New play field

New paved play area

New paved play area for pre-K/K students

New two-story academic wing (pre-K & K on first floor; 1-4 on second floor)

New one-story gymnasium/cafeteria/administrative wing

Demolish school in its entirety; student population to temporarily transfer to Beal during construction; create new expanded parking lot & reconfigured bus turnaround

- New building
- Existing building to be demolished
- Wetlands
- 200' wetlands buffer zone
- Property line
- Vehicular access points



Locus Map



OPTIONS

- FEASIBLE
- ◐ MARGINAL

PRE-K

PARKER ROAD

ELEMENTARY (K-4)

MAJOR HOWARD BEAL

CALVIN COOLIDGE

FLORAL STREET

SPRING STREET

WALTER J PATON

	REMOVE MODULARS & REDISTRIBUTE	ADDITION/RENOVATION AT 10-YR. ENROLLMENT	ADDITION/RENOVATION FOR PRE-K FACILITY	NEW SCHOOL ON EXISTING SITE			NEW SCHOOL ON ALT. SITE		
				(+/-) 242 PRE-K STUDENTS	(+/-) 375 PRE-K STUDENTS	(+/-) 300 ELEM. STUDENTS	(+/-) 600 ELEM. STUDENTS	(+/-) 300 STUDENTS	(+/-) 600 STUDENTS
PARKER ROAD				●	●	●	◐	●	●
MAJOR HOWARD BEAL									
CALVIN COOLIDGE	◐	◐	◐			●	●	●	●
FLORAL STREET	●	●	●			●	●	●	●
SPRING STREET	◐	●	●			●	◐	●	●
WALTER J PATON	◐	◐	●	●		◐		●	●

OPTIONS

- FEASIBLE
- ◐ MARGINAL

PRE-K

PARKER ROAD

ELEMENTARY (K-4)

MAJOR HOWARD BEAL

CALVIN COOLIDGE

FLORAL STREET

SPRING STREET

WALTER J PATON

MIDDLE SCHOOL (5-8)

SHERWOOD

OAK

HIGH SCHOOL (9-12)

SHREWSBURY HIGH

REMOVE MODULARS
& REDISTRIBUTE

ADDITION/RENOVATION
AT 10-YR. ENROLLMENT

ADDITION/RENOVATION
FOR PRE-K FACILITY

(+/-) 242 PRE-K
STUDENTS

(+/-) 375 PRE-K
STUDENTS

(+/-) 300 ELEM.
STUDENTS

(+/-) 600 ELEM.
STUDENTS

(+/-) 300 ELEM. +
300 PRE-K STUD.

NEW SCHOOL
ON
ALT. SITE

(+/-) 300
STUDENTS

(+/-) 600
STUDENTS

NEW SCHOOL
ON
EXISTING SITE

◐ ● ● ● ●

◐ ● ● ● ●

● ● ● ● ●

●

●

●

◐

●

●

●

●

●

●

●

●

●

●

●

ADDITION/RENOVATION VS NEW CONSTRUCTION

ELEMENTARY (K-4)	NEW CONSTRUCTION (300 STUDENTS)	ADD/RENO	NOTES
MAJOR HOWARD BEAL	--	--	
CALVIN COOLIDGE	\$45,000,000	\$35,000,000	Add/reno not desirable this location
FLORAL STREET	\$28,000,000	\$28,000,000	Kindergarten addition for parity
SPRING STREET	\$45,000,000	\$40,000,000	No significant savings for add/reno
WALTER J PATON	\$45,000,000	\$43,000,000	No significant savings for add/reno
TOTALS	\$163,000,000	\$146,000,000	

- Costs were calculated for an addition/renovation of each school individually
- There is a lack of significant savings between addition/renovation and new construction at the elementary level
- New construction will yield the better end product for the cost