



**Shrewsbury Public Schools  
Shrewsbury, MA**

**School Year 2023-24 Enrollment Projection Report**

*Copyright, New England School Development Council, 2023*

# Table of Contents

Section	Page
Enrollment Summary.....	1
Historical Enrollment Table.....	2
Historical Enrollment Graph.....	3
Projected Enrollment Table.....	4
Projected Enrollment Graph.....	5
Historical & Projected Enrollment Graph.....	6
Historical & Projected Enrollment in Grade Combinations Line Graph.....	7
Historical & Projected Enrollment in Grade Combinations Stacked Column Graph.....	8
Birth to Kindergarten Relationship Graph.....	9
Additional Information .....	10
New England's PK-12 Enrollment Trends.....	11
Methodology, Reliability and Use of this Document.....	12

# Enrollment Summary

NESDEC is pleased to send you this report displaying the past, present, and projected enrollments for your District. It is important to update enrollment projections every year to identify changes in enrollment patterns. Ten-year projections are designed to provide your District with yearly, up-to-date enrollment information that can be used by boards and administrators for effective planning and allocation of resources.

Included in this report are graphs representing historical and projected grade-by-grade enrollments, as well as historical and projected enrollments in grade combinations. We received the enrollment data from the District, and we assume that the method of collecting this data has been consistent from year to year.

Enrollment projections are more reliable in Years #1-4 in the future and less reliable in the “out-years.” Projections six to ten years out may serve as a guide to future enrollments and are useful for planning purposes. In light of this, NESDEC has added a “Spring Update Refresher” enrollment projection at no cost to affiliates. For more information, please refer to the Methodology, Reliability and Use of this Document section.

The NESDEC enrollment projection fell within 87 students of the K-12 total, 5,636 students projected vs. 5,723 enrolled. Shrewsbury has informed NESDEC that it has experienced an influx of families with children. These projections assume that these families will stay in Shrewsbury through 12th grade. Unknown at this time is if these new-to-Shrewsbury families will remain in the community or move to other communities during the school year. Also unknown is if this in-migration of families will continue over time.

Births decreased by 39 from a previous ten-year average of 353 to a projected average of 314. In most districts, Grades 1-8 are very stable in enrollments. However, there have been increases in 7 of the 8 most recent years, leading to a net increase averaging 67 students per year.

Over the next three years, Grades K-4 enrollments are projected to decrease by 5 students, Grades 5-6 enrollments are projected to decrease by 68 students, Grades 7-8 enrollments are projected to increase by 1 student, and Grades 9-12 enrollments are projected to decrease by 67 students, as students move through the grades.

# Historical Enrollment

School District: Shrewsbury, MA

10/20/2023

Historical Enrollment By Grade																			
Birth Year	Births*	School Year	PK	K	1	2	3	4	5	6	7	8	9	10	11	12	UNGR	K-12	PK-12
2008	379	2013-14	250	392	399	450	452	480	462	518	490	471	420	406	419	401	0	5760	6010
2009	371	2014-15	234	346	430	430	462	467	487	469	529	478	432	423	409	419	0	5781	6015
2010	332	2015-16	239	355	425	446	439	474	472	500	480	547	413	441	411	403	0	5806	6045
2011	383	2016-17	232	388	418	459	460	462	487	490	511	492	513	428	441	410	0	5959	6191
2012	366	2017-18	237	355	424	437	476	482	464	502	493	516	451	513	429	439	0	5981	6218
2013	370	2018-19	243	351	424	447	454	494	490	468	511	495	460	447	501	428	0	5970	6213
2014	346	2019-20	220	363	426	439	469	455	493	502	478	514	470	469	452	501	0	6031	6251
2015	328	2020-21	110	287	407	434	430	484	473	491	502	483	459	480	470	464	0	5864	5974
2016	340	2021-22	164	343	339	417	429	427	484	469	481	498	459	450	464	461	0	5721	5885
2017	315	2022-23	203	358	372	375	425	445	440	508	465	479	486	452	430	453	< 10 **	5690	5893
2018	328	2023-24	202	359	392	400	390	449	470	450	483	460	491	507	438	434	17	5740	5942

\*Birth data provided by Public Health Vital Records Departments in each state.

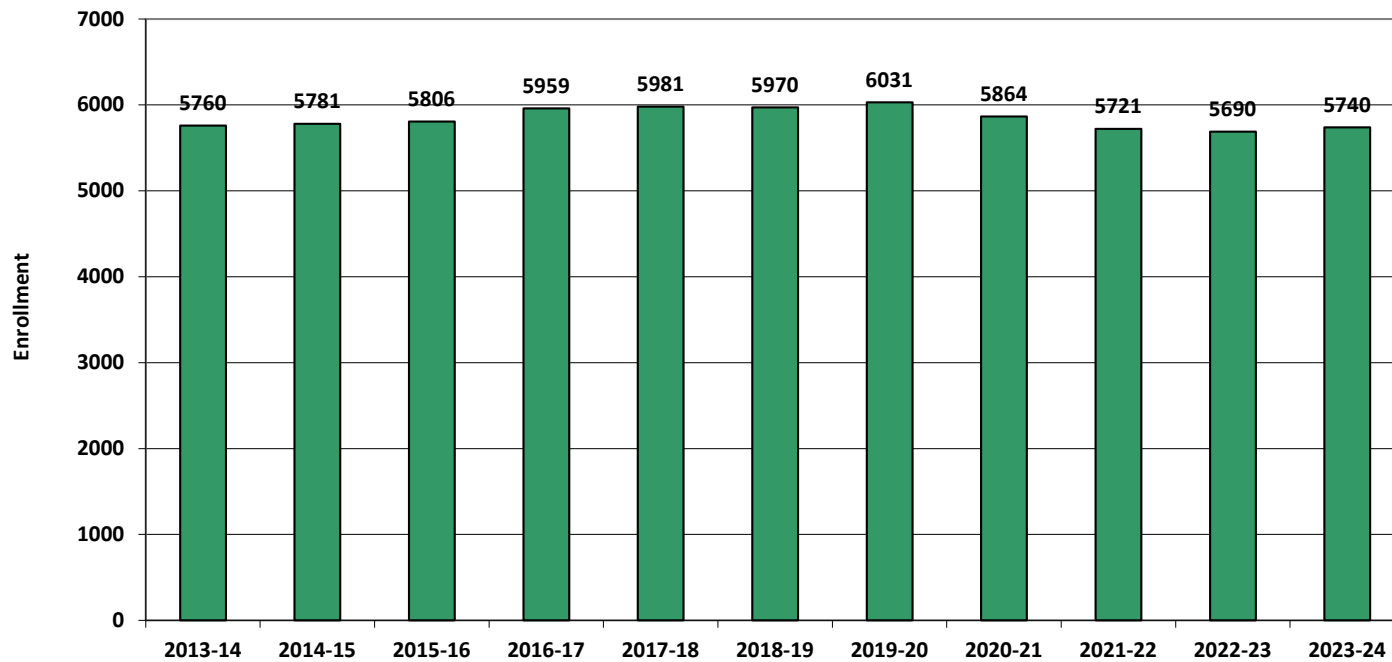
\*\* < 10 Not reported, to protect subgroups with fewer than 10 students.

Historical Enrollment in Grade Combinations									
School Year	PK-4	K-4	5-6	K-6	K-8	5-8	7-8	7-12	9-12
2013-14	2423	2173	980	3153	4114	1941	961	2607	1646
2014-15	2369	2135	956	3091	4098	1963	1007	2690	1683
2015-16	2378	2139	972	3111	4138	1999	1027	2695	1668
2016-17	2419	2187	977	3164	4167	1980	1003	2795	1792
2017-18	2411	2174	966	3140	4149	1975	1009	2841	1832
2018-19	2413	2170	958	3128	4134	1964	1006	2842	1836
2019-20	2372	2152	995	3147	4139	1987	992	2884	1892
2020-21	2152	2042	964	3006	3991	1949	985	2858	1873
2021-22	2119	1955	953	2908	3887	1932	979	2813	1834
2022-23	2178	1975	948	2923	3867	1892	944	2765	1821
2023-24	2192	1990	920	2910	3853	1863	943	2813	1870

Historical Percentage Changes			
School Year	K-12	Diff.	%
2013-14	5760		
2014-15	5781	21	0.4%
2015-16	5806	25	0.4%
2016-17	5959	153	2.6%
2017-18	5981	22	0.4%
2018-19	5970	-11	-0.2%
2019-20	6031	61	1.0%
2020-21	5864	-167	-2.8%
2021-22	5721	-143	-2.4%
2022-23	5690	-31	-0.5%
2023-24	5740	50	0.9%
Change	-20		-0.3%

# Historical Enrollment

Grades K-12, School Years 2013-14 to 2023-24



# Projected Enrollment

School District: Shrewsbury, MA

10/20/2023

Enrollment Projections By Grade*																				
Birth Year	Births*		School Year	PK	K	1	2	3	4	5	6	7	8	9	10	11	12	UNGR	K-12	PK-12
2018	328		2023-24	202	359	392	400	390	449	470	450	483	460	491	507	438	434	17	5740	5942
2019	354		2024-25	203	372	406	414	406	401	462	480	448	479	444	492	493	437	17	5751	5954
2020	261	(prov.)	2025-26	203	274	420	429	421	418	413	472	478	445	462	445	479	492	17	5665	5868
2021	345	(prov.)	2026-27	204	362	310	444	436	433	430	422	470	474	429	463	433	478	17	5601	5805
2022	294	(prov.)	2027-28	204	309	409	327	451	449	446	439	420	466	457	430	451	432	17	5503	5707
2023	316	(est.)	2028-29	205	332	349	432	332	464	462	455	437	417	450	458	419	450	17	5474	5679
2024	314	(est.)	2029-30	205	330	375	369	439	342	477	472	453	434	402	451	446	418	17	5425	5630
2025	306	(est.)	2030-31	206	321	373	396	375	452	352	487	470	450	419	403	439	445	17	5399	5605
2026	315	(est.)	2031-32	206	331	363	394	402	386	465	359	485	466	434	420	392	438	17	5352	5558
2027	309	(est.)	2032-33	207	325	374	383	400	414	397	475	357	481	450	435	409	391	17	5308	5515
2028	312	(est.)	2033-34	208	328	367	395	389	412	426	405	473	354	464	451	423	408	17	5312	5520

Note: Ungraded students (UNGR) often are high school students whose anticipated years of graduation are unknown, or students with special needs - UNGR not included in Grade Combinations for 7-12, 9-12, etc.

Based on an estimate of births

Based on children already born

Based on students already enrolled

\*Birth data provided by Public Health Vital Records Departments in each state.

\*\* < 10 Not reported, to protect subgroups with fewer than 10 students.

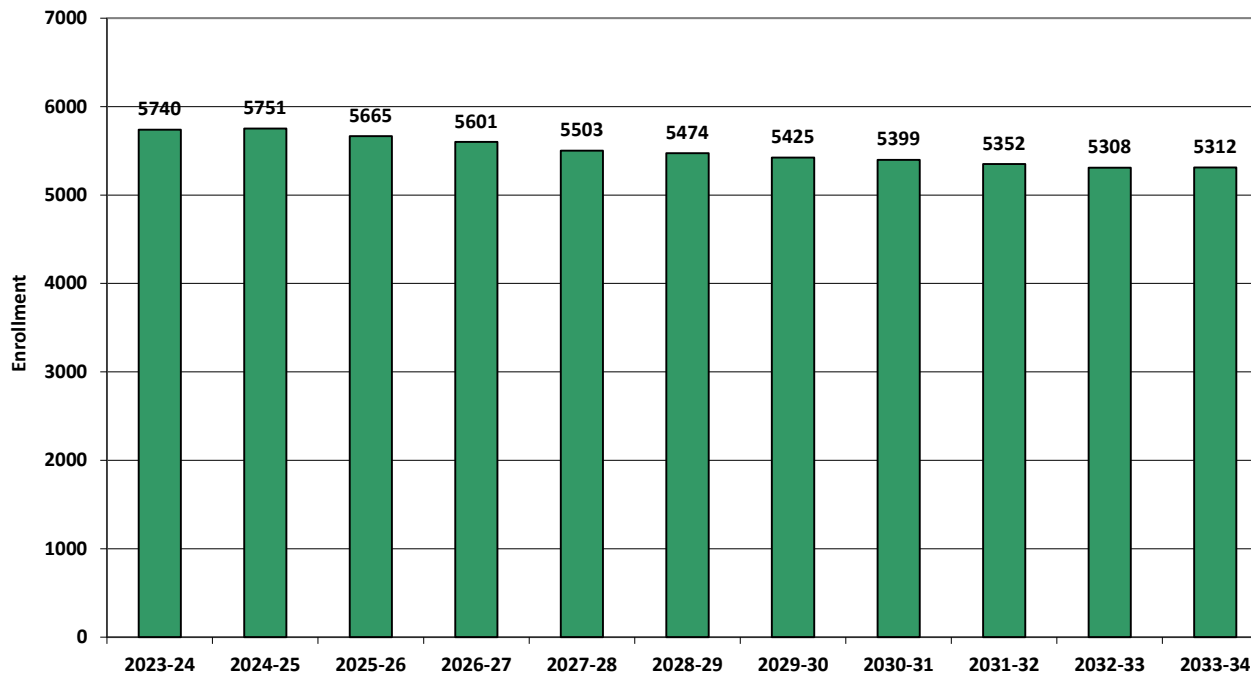
Projected Enrollment in Grade Combinations*									
School Year	PK-4	K-4	5-6	K-6	K-8	5-8	7-8	7-12	9-12
2023-24	2192	1990	920	2910	3853	1863	943	2813	1870
2024-25	2202	1999	942	2941	3868	1869	927	2793	1866
2025-26	2165	1962	885	2847	3770	1808	923	2801	1878
2026-27	2189	1985	852	2837	3781	1796	944	2747	1803
2027-28	2149	1945	885	2830	3716	1771	886	2656	1770
2028-29	2114	1909	917	2826	3680	1771	854	2631	1777
2029-30	2060	1855	949	2804	3691	1836	887	2604	1717
2030-31	2123	1917	839	2756	3676	1759	920	2626	1706
2031-32	2082	1876	824	2700	3651	1775	951	2635	1684
2032-33	2103	1896	872	2768	3606	1710	838	2523	1685
2033-34	2099	1891	831	2722	3549	1658	827	2573	1746

Projected Percentage Changes			
School Year	K-12	Diff.	%
2023-24	5740	0	0.0%
2024-25	5751	11	0.2%
2025-26	5665	-86	-1.5%
2026-27	5601	-64	-1.1%
2027-28	5503	-98	-1.7%
2028-29	5474	-29	-0.5%
2029-30	5425	-49	-0.9%
2030-31	5399	-26	-0.5%
2031-32	5352	-47	-0.9%
2032-33	5308	-44	-0.8%
2033-34	5312	4	0.1%
<b>Change</b>		<b>-428</b>	<b>-7.5%</b>

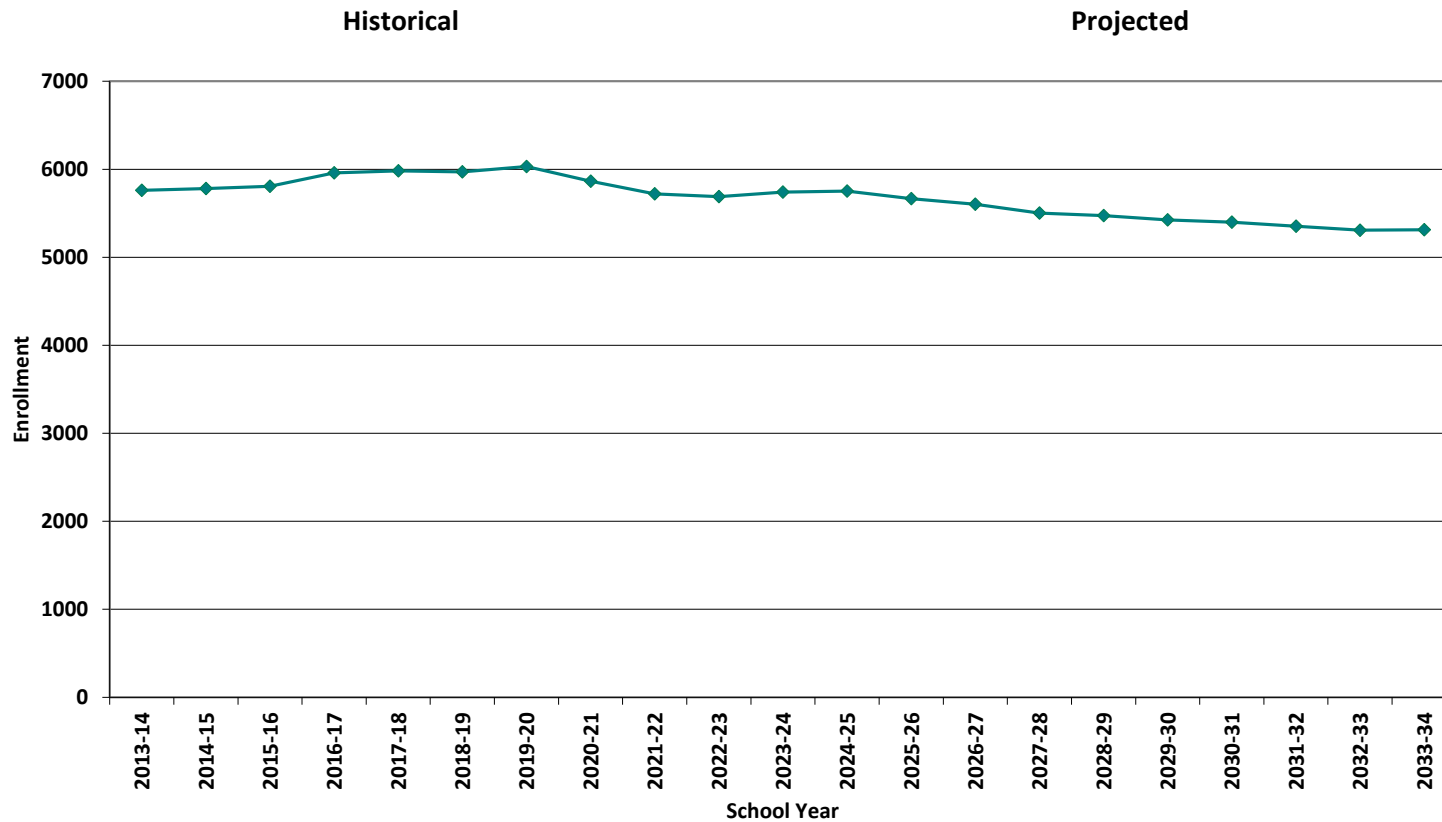
\*Projections should be updated annually to reflect changes in in/out-migration of families, real estate sales, residential construction, births, and similar factors.

# Projected Enrollment

Grades K-12, School Years 2023-24 to 2033-34

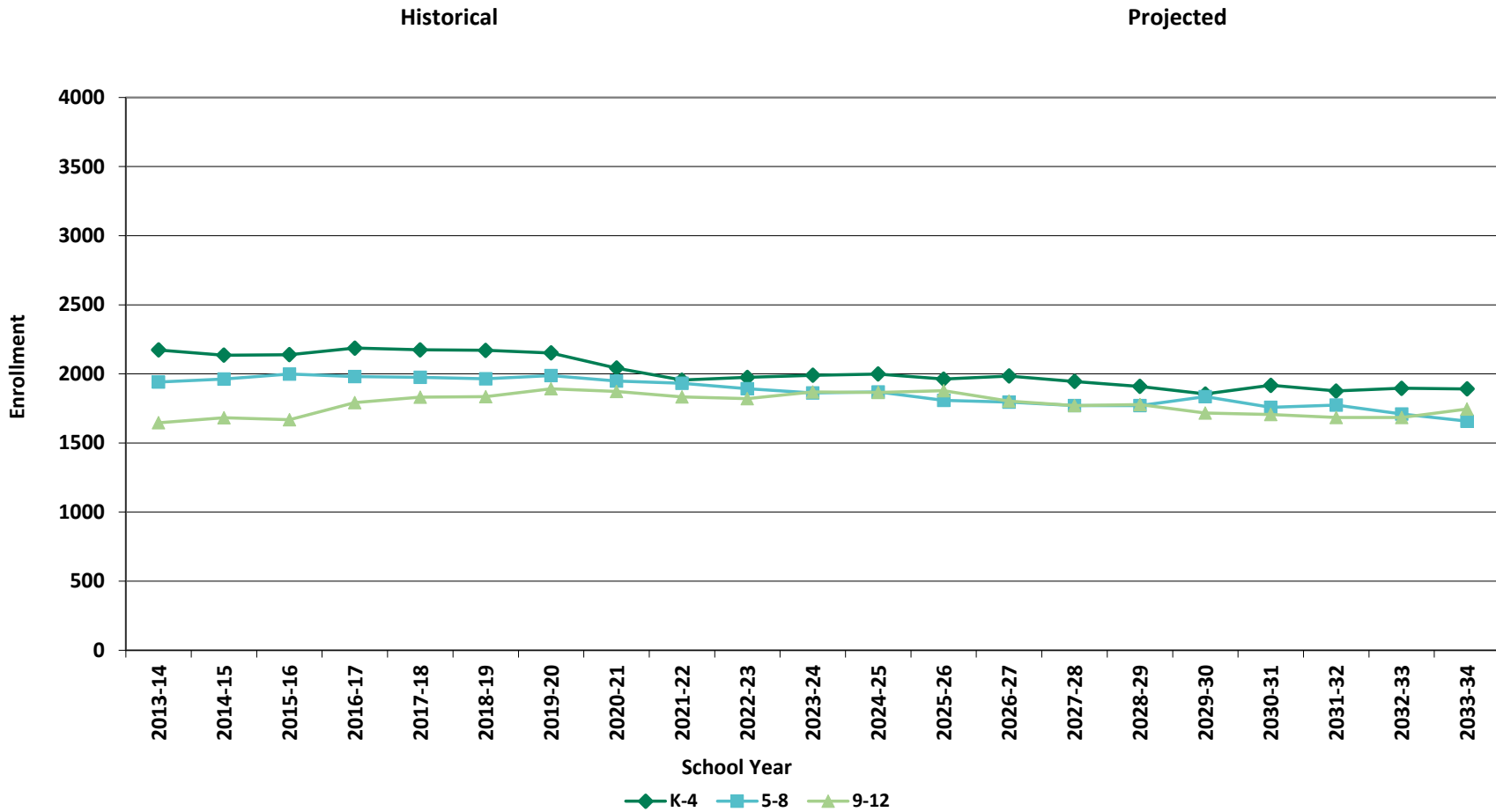


# Historical & Projected Enrollment

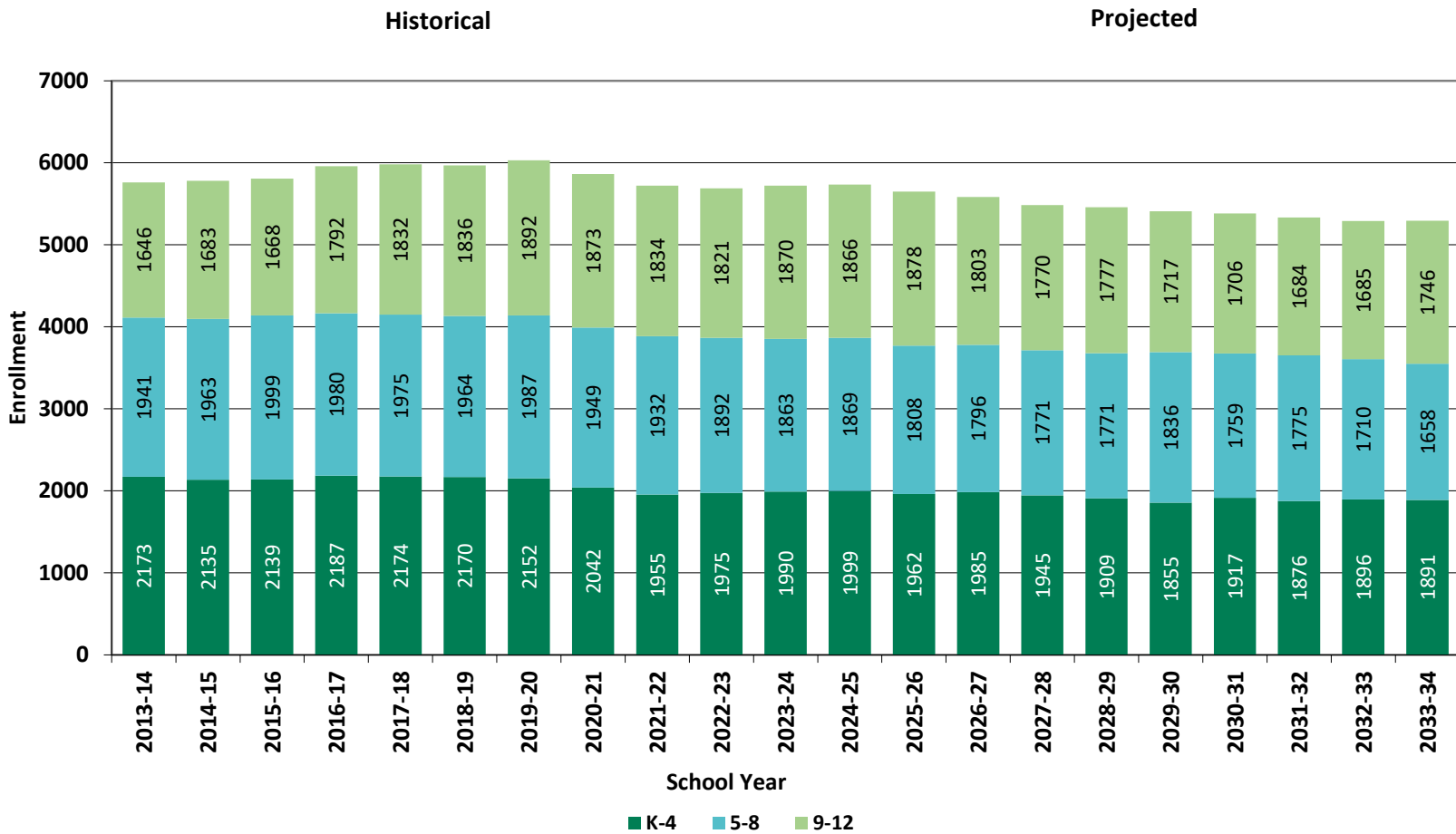




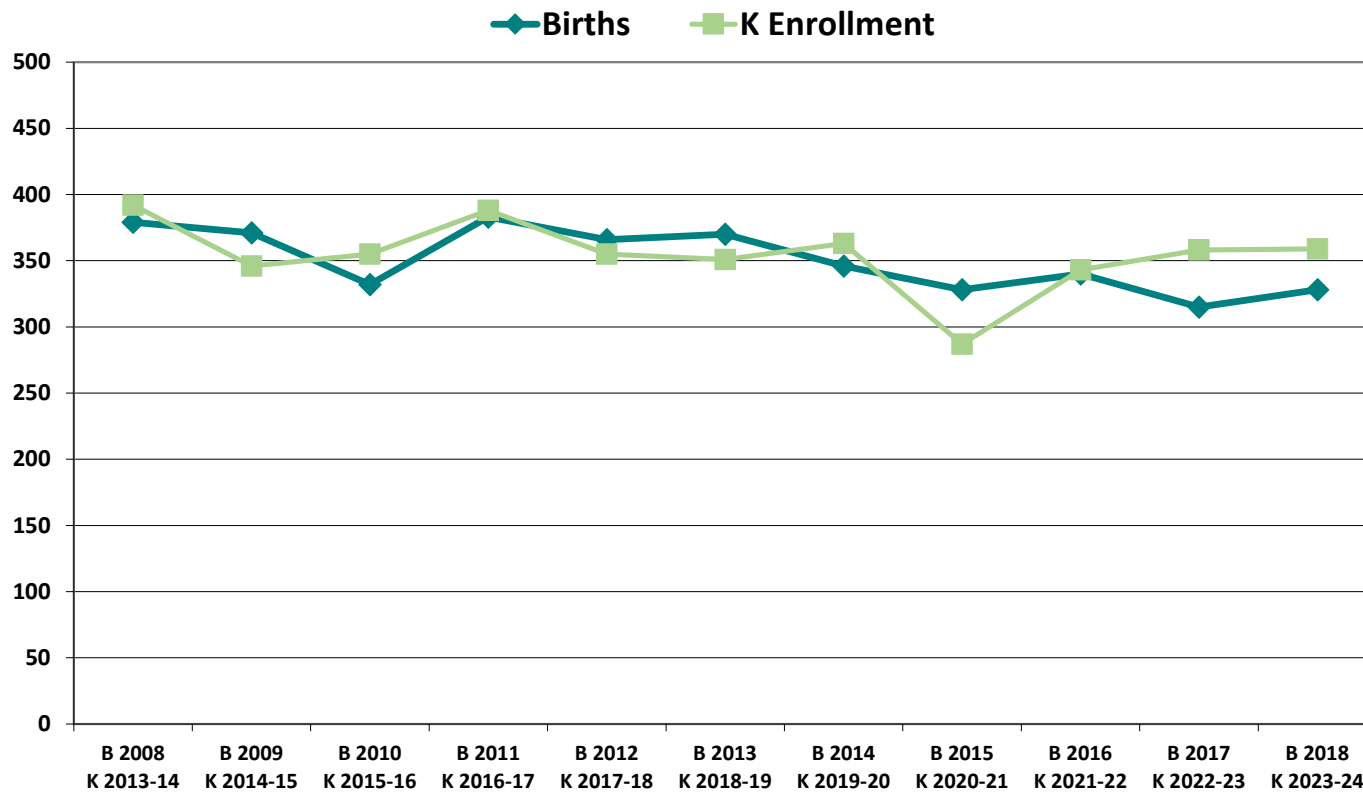
# Historical & Projected Enrollments in Grade Combinations



# Historical & Projected Enrollments in Grade Combinations



# Birth-to-Kindergarten Relationship



## Additional Information

Building Permits Issued (Source: HUD)		
Year	Single-Family	Multi-Units
2019	34	318
2020	35	256
2021	40	328
2022	34	266
2023	13 to date	0 to date

School Year	9 - 12 CTE	K - 12 Non-Public	K - 12 Choice-In	K - 12 Choice-Out	K - 12 Out-of-District SPED	K - 12 Homeschool
2019-20	103	330	24	23	61	18
2020-21	113	555	24	20	55	40
2021-22	96	553	22	78	62	29
2022-23	63	n/a	20	20	62	31
2023-24	47	121	13	< 10 **	48	27

\*The above data was provided by the District, with the exception of building permit data (provided by HUD).

"n/a" signifies that information was not provided by District.

\*\* < 10 Not reported, to protect subgroups with fewer than 10 students.

## New England's PK-12 Enrollments Trends

From 2021 to 2030, the US Department of Education anticipates changes in PK-12 enrollment of -3.2% in the South, -6.0% in the West, -3.9% in the Midwest, -6.0% in the Northeast, and a total of -4.4% nationwide.

State	Fall 2021 PK - 12	Fall 2030 Projected	PK-12 Decline	% Change 2021-2030
USA	49,452,864	47,252,500	-2,200,364	-4.4%
CT	508,686	475,600	-33,086	-6.5%
ME	173,215	161,800	-11,415	-6.6%
MA	921,180	879,900	-41,280	-4.5%
NH	170,005	144,600	-25,405	-14.9%
RI	138,566	130,200	-8,366	-6.0%
VT	83,975	74,600	-9,375	-11.2%

**Source:** U.S. Department of Education, National Center for Education Statistics, Enrollment in public elementary and secondary schools, by region, state, and jurisdiction: Selected years, fall 1990 through fall 2030, Table 203.20, March 2023.

Although most New England Districts are seeing a decline in the number of births, NESDEC's experience indicates that the impact on enrollment varies from District to District. Almost half of New England Districts have been growing in PK-12 enrollment, and a similar number are declining (often in rural areas), with the other Districts remaining stable.

## PROJECTION METHODOLOGY

Cohort component (survival) technique is a frequently used method of preparing enrollment forecasts. NESDEC uses this method, but modifies it in order to move away from forecasts that are wholly computer- or formula-driven. Such modification permits the incorporation of important, current district-specific demographic information into the generation of enrollment forecasts (such as in/out-migration of students, resident births, HUD-reported building permits, etc.). Percentages are calculated from the historical enrollment data to determine a reliable percentage of increase or decrease in enrollment between any two grades. For example, if 100 students enrolled in Grade 1 in 2022-23 increased to 104 students in Grade 2 in 2023-24, the percentage of survival would be 104%, or a ratio of 1.04. Ratios are calculated between each pair of grades or years in school over several recent years.

After study and analysis of the historical ratios, and based upon a reasonable set of assumptions regarding births, migration rates, retention rates, etc., ratios most indicative of future growth patterns are determined for each pair of grades. The ratios thus selected are applied to the present enrollment statistics to project into future years. The ratios are the key factors in the reliability of the projections, assuming validity of the data at the starting point.

## RELIABILITY OF ENROLLMENT PROJECTIONS

Projections can serve as useful guides to school administrators for educational planning. Enrollment projections are more reliable in Years #1-4 in the future and less reliable in the "out-years." Projections six to ten years out may serve as a guide to future enrollments and are useful for planning purposes, but they should be viewed as subject to change given the likelihood of potential shifts in underlying assumptions/trends, such as student migration, births as they relate to Kindergarten enrollment, and other factors.

Projections that are based upon **the children who already are in the district** (the current K-12 population only) will be the most reliable. The second level of reliability will be for those children already **born into the community but not yet old enough to be in school**. The least reliable category is the group for which an estimate must be made **to predict the number of births**, thereby adding additional uncertainty. See these three multi-colored groupings on the "Projected Enrollment" tab.

Annual updates allow for early identification of recent changes in historical trends. When the actual enrollment in a grade is significantly different (higher or lower) from the projected number, it is important (yet difficult) to determine whether this is a one-year aberration or whether a new trend may have begun. **In light of this possibility, NESDEC urges all school districts to have updated enrollment forecasts developed by NESDEC each October.** This service is available at no cost to affiliated school districts.

## USING THIS INFORMATION ELECTRONICALLY

If you would like to extract the information contained in this report for your own documents or presentations, you can use screenshots, which can be inserted into PowerPoint slides, Word documents, etc. Because screenshots create graphics, the image is not editable. Please feel free to contact us if you need assistance in this matter, by phone (508-481-9444) or by email ([ep@nesdec.org](mailto:ep@nesdec.org)).