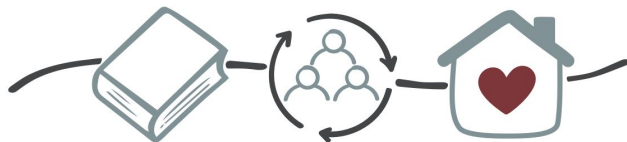


RISE



Update

School Committee 11/15/23

Overview

1. Program Expansion
2. Relocation to 557 Main Street
3. Grand Opening of Maple & Main



OUR JOURNEY



District's Vision

Shrewsbury Public Schools strives for inclusive educational opportunities for all. In 2021, we began to work together to design a program to support students at SPS who are ages 18-22. There was an opportunity to fund this through a one-time American Rescue Plan grant with the Department of Elementary and Secondary Education. We would like to thank the school committee who approved this in November 2021, paving the way for the creation of our new program Reaching Independence through Supportive Employment, RISE.



Planning

SPS values community voice, therefore, an advisory board was formed to help design, develop, and plan all aspects of RISE. The board was made up of administrators, teachers, parents, students and community members. Along with the advisory board, Katrina Lallier, Graphic Designer and SPS Parent, volunteered her time to create our logos and branding.

Location

With support from Chacharone Properties RISE was able to open the doors of its newly designed building in July 2023. The 557 Main St location allows for both classroom and retail space for students to access.



First Year at RISE

Students in a transition program have targeted education to increase student independence focusing on functional life skills, employment opportunities, and community access. RISE began during the 2022-2023 school year. Our program started small with three students, and we have happily grown our program to sixteen young adults.



Maple & Main

SPS first retail business, Maple & Main, allows for a training and employment opportunity for RISE students. Maple & Main presented by RISE enables student to learn job related skills and prepare for future employment.

557 Main Street



Projected Enrollment

Given what we know about our current students and their needs, we are projecting the following enrollment for the next four years. Please keep in mind that students may enter the program at age 18 and stay, if appropriate, up to age 22. Students will be aging into the program, exiting the program, and remaining in the program during the course of these four years.

School Year	Student Enrollment
2023-2024	16
2024-2025	23
2025-2026	29
2026-2027	28

RISE Program



MAPLE & MAIN

PRESENTED BY RISE





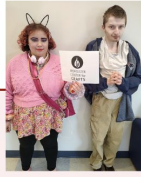
RISE



Employment Opportunities



Worcester State Wellness Center
Clean and organize gym equipment and facility.



Worcester Center for Crafts
Distribute promotional materials to various businesses.



Shrewsbury Club
Clean and organize kids room including toys, tables, etc.



Stronger Personal Fitness
Clean, organize and prepare gym for customers.



Paton Recess Support
Plan and execute activities at recess.



Woo Sox
Work inside fan services to complete various tasks.



Community Harvest Project
Work on the farm doing tasks like, weeding, picking, packaging, etc.



Department of Fire Services
Complete various office tasks and projects to prepare materials for training.



Worcester State Hockey Team
Prepare jerseys, equipment and locker room for WS hockey team.



Easter Seals Office
Work inside the Easter Seals office to build furniture.



Apple Tree Arts
Clean, organize and prepare music rooms throughout facility.



Nursing Laundry
Collect, wash and deliver nursing laundry to all schools in the district.



Paton Art Class Assistant
Assist art teacher with various projects and tasks across multiple classes



Sherwood Cleaning
Clean and organize teacher prep rooms throughout school.



Floral Street Cafe & Office Help
Assist students in cafeteria during lunch and complete office tasks.

Budget and Funding Sources

FY 24 Staffing through Federal Special Education Grant 240:

RISE Program:

- 2.0 RISE Special Education Teachers
- 1.0 RISE Related Services (Speech and Language, Occupational Therapy, Counseling)
- 1.0 RISE Retail Store Manager
- 6.0 RISE Job Coaches/Paraprofessionals



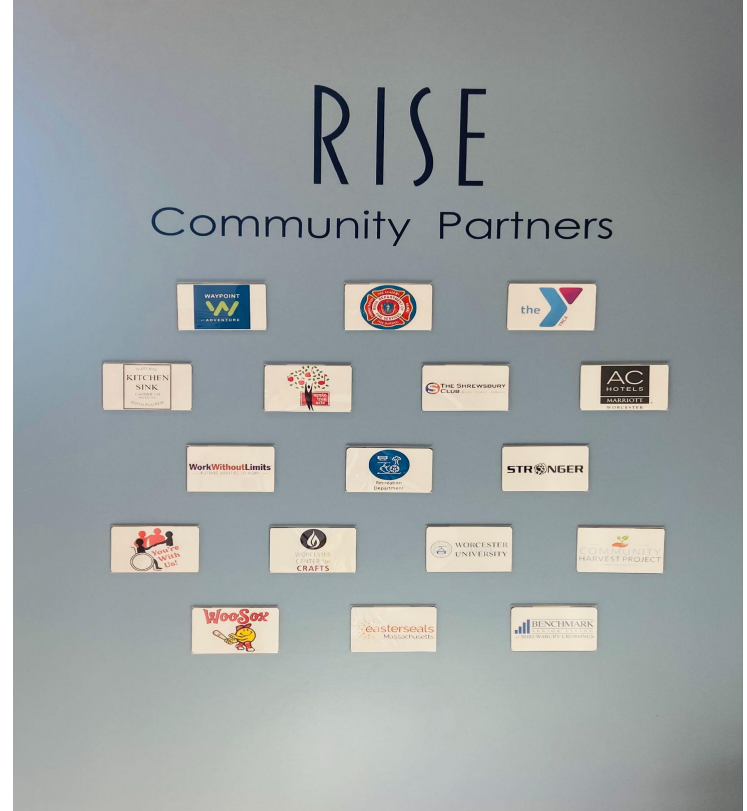
Building Maintenance, Operations & Security

Building Independence with
Activities of Daily Living (ADLs):

- Motor tasks
 - Taking out the trash
 - Sweeping
 - Cleaning surfaces
- Functional Academics
 - Restocking bathrooms
 - Inventory and restocking of Kitchen and Maple & Main store



Capital Campaign



Thank you!!

