

A Report of the Results of the Seal of Biliteracy for the Class of 2022

Kenneth A. Almeida
Director of World Languages



SHREWSBURY
PUBLIC SCHOOLS

SHREWSBURY PUBLIC SCHOOLS PORTRAIT OF A GRADUATE



Numbers



137

47

34%



Proficiency in English

English Language Criteria:

- *MCAS- meeting or exceeding the proficient threshold on the ELA, grade 10 MCAS (score 472-500 Next Gen) (Including students having taken MCAS as a makeup in the 11 or 12 grade)
- ACCESS- ELL's must score 4.2 overall and 3.9 in composite literacy

*Students who earn a scaled score between 455 and 471 on ELA grade 10 Next Gen may satisfy the English language criteria if they fulfill the requirements of an Educational Proficiency Plan and attain a minimum score or level on a nationally recognized and readily available English proficiency assessment approved by DESE



Proficiency in a Language Other than English (LOTE)

ACTFL level Intermediate High Proficiency on approved assessment

AP Language and Culture or AP Literature and Culture minimum score of 4

ACTFL AAPPL Exam I-5 in all domains (Form B)

AP Latin minimum score of 4

ACTFL ALIRA Latin exam I-5



Seal with Distinction

ACTFL level Advanced-Low Proficiency on approved assessment

AP Language and Culture or AP Literature and Culture minimum score of 5

ACTFL AAPPL Exam A-1 in all domains (Form B)

AP Latin minimum score of 5

ACTFL ALIRA Latin exam A-1 in all domains

Portfolio-Based Alternative Evidence Method for Foreign Language

47 SHS 2022 Graduates...

“High functional and academic levels of proficiency in English and a foreign language... can function in those languages in authentic, real life situations”

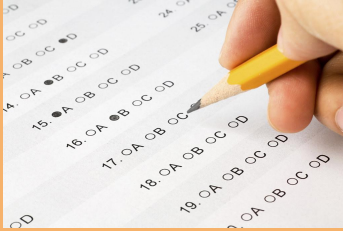


Source:

Guidelines for Implementing the State Seal of Biliteracy Massachusetts Department of Elementary and Secondary Education, December, 2018, www.doe.mass.edu/ell/guidance/biliteracy.docx



Testing Groups



1. World Language Students (5/5H/AP)

- AAPPL (ACTFL Assessment towards Performance in Proficiency in Languages)
- ALIRA (ACTFL Latin Interpretive Reading Assessment)
- AP Language and Culture Exams

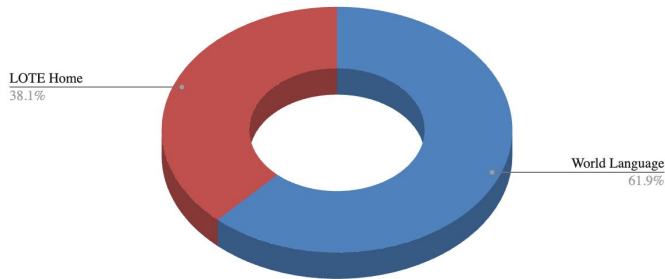
2. Students of LOTE Homes (Seniors)

- AAPPL (ACTFL Assessment towards Performance in Proficiency in Languages)
- OPI/WPT (ACTFL Oral Proficiency Interview and Writing Proficiency Test)
- AVANT World Speak
- AJA Exam in Tamil

Test Results

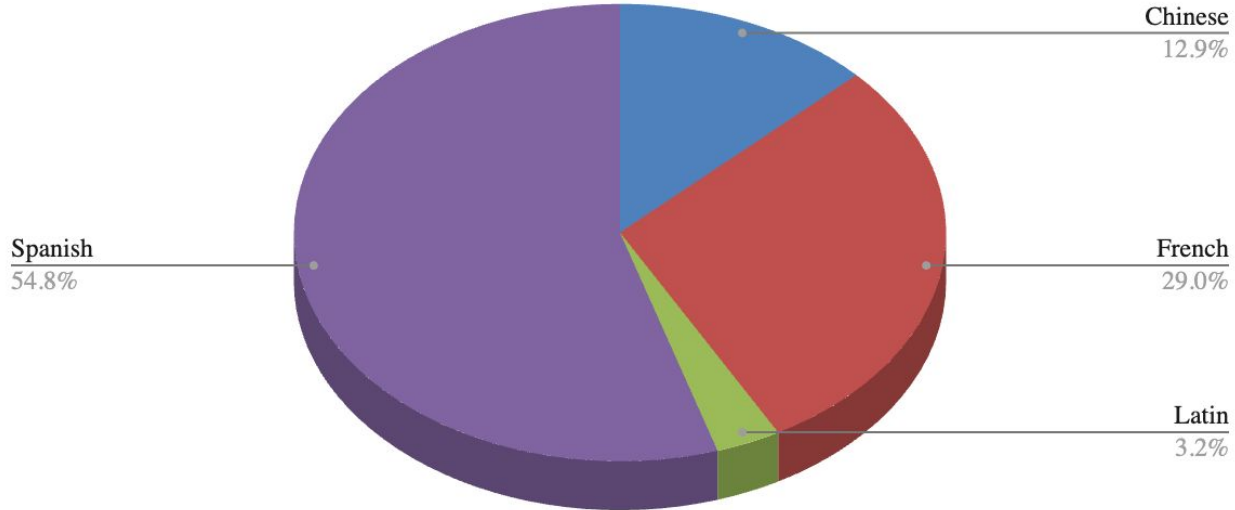
1. World Language Students (5/5H/AP)	2. Students of LOTE Homes (Seniors)
105 Participants 31 Seals 29.5% Success Rate	32 Participants 16 Seals 50% Success Rate

Seal Recipients as % of Student Type



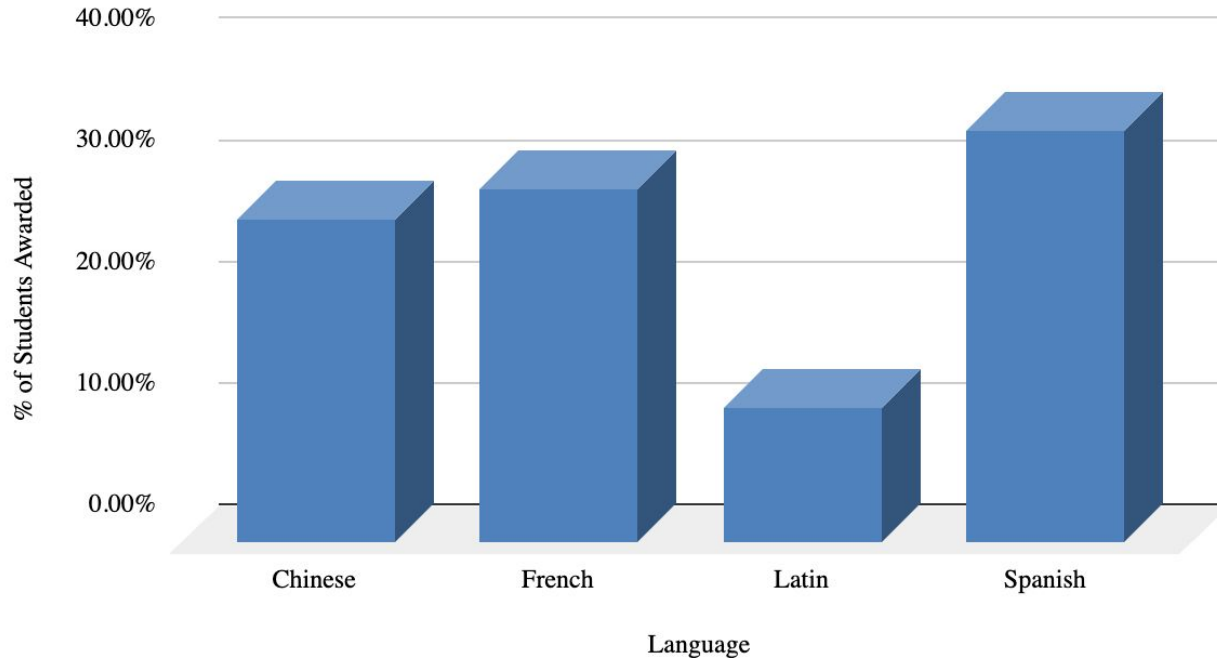
World Language Student Results (31 Seals)

% of Total Recipients By Language (World Language Students)



Students Awarded in Each Language Group

% of Students Awarded in Language (World Language Students)



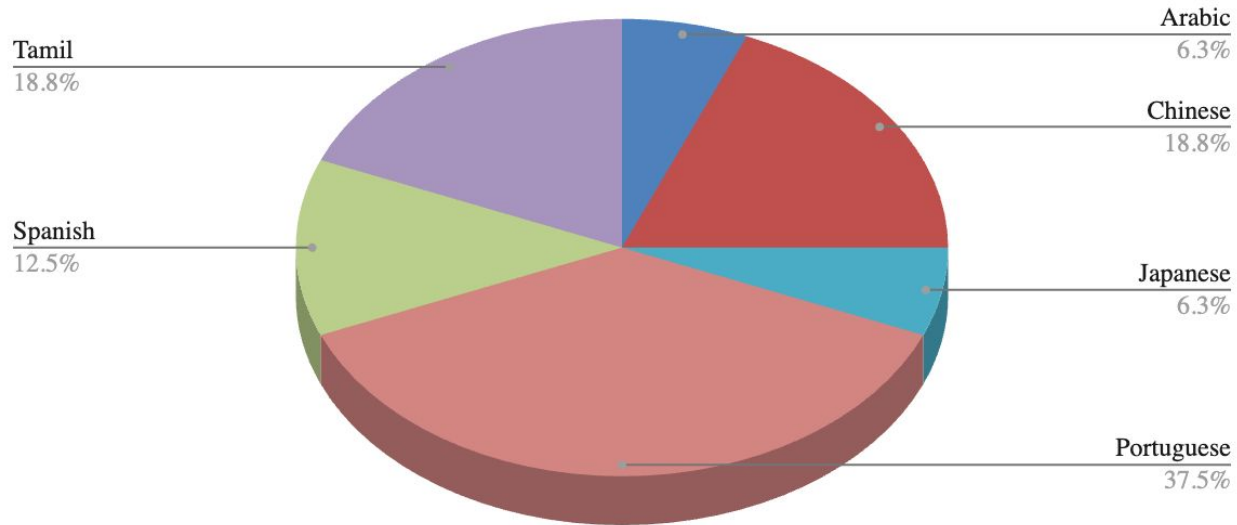
So Close!

89% of the students that missed the World Language requirement by 1 mode (4 total) on AAPPL Test scored I4 (Minimum needed I5)



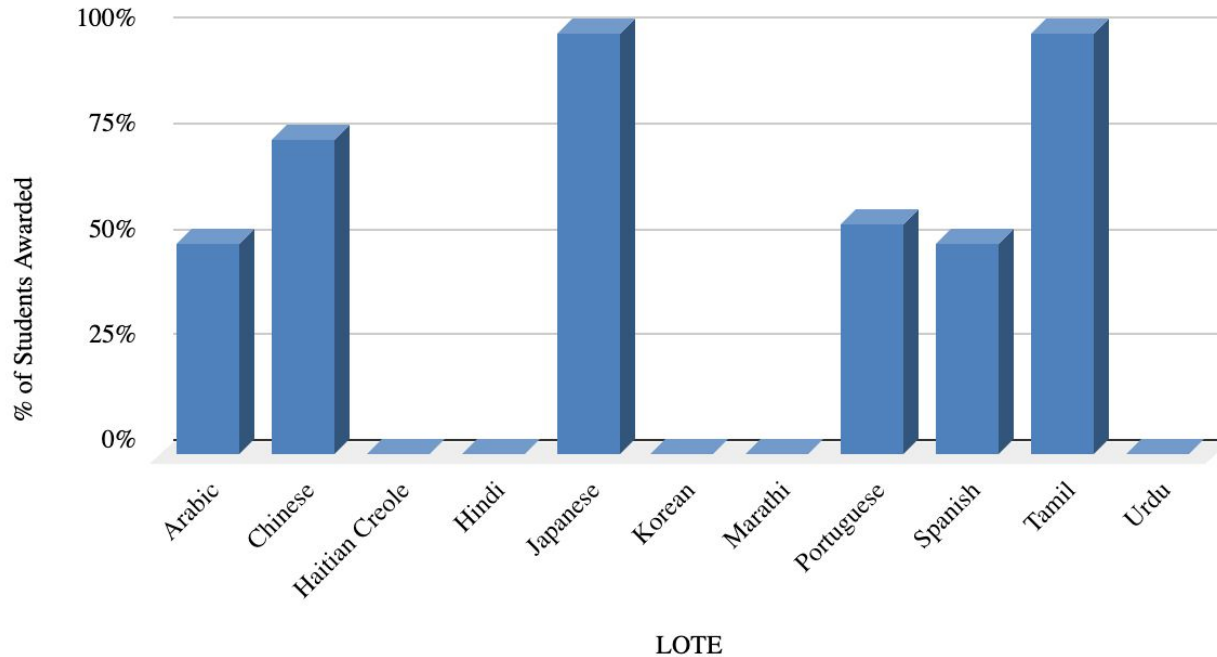
LOTE Student Results (16 Seals)

% of Total Recipients by Language (LOTE Students)



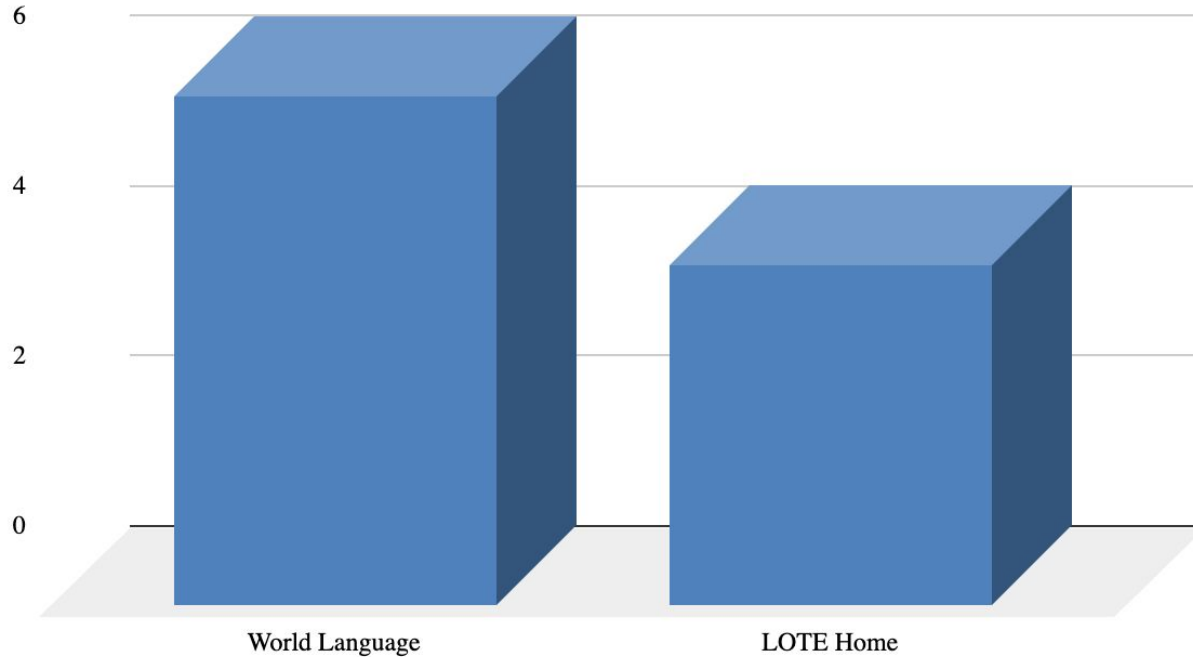
Students Awarded in Each Language Group

% of Students Awarded in Language (LOTE Students)



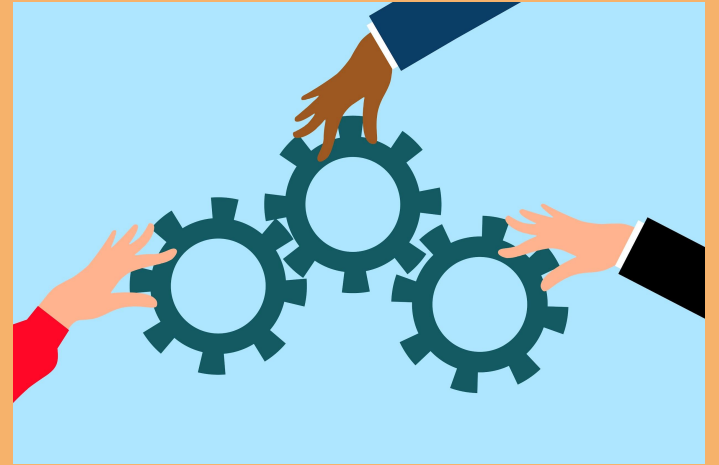
Seal with Distinction (Advanced Language Proficiency)

SSOB with Distinction



Reasons to be Proud

- English/ELA and ELE Educators
- World Language Educators
- STUDENTS! (M. C. D)



Opportunities

- Increase participation
- Offer testing in LOTE student segment junior AND senior year
- Include SSOB program on annual budget for sustainability
- Use data to set teaching targets and curriculum content
- Begin testing at earlier levels in World Language to collect data for students on IEP's

Questions?

