

PARKER ROAD



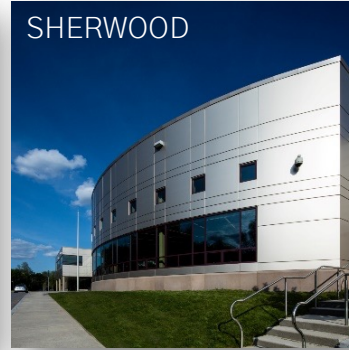
COOLIDGE



SPRING ST



SHERWOOD



SHREWSBURY HS



BEAL



FLORAL ST



PATON



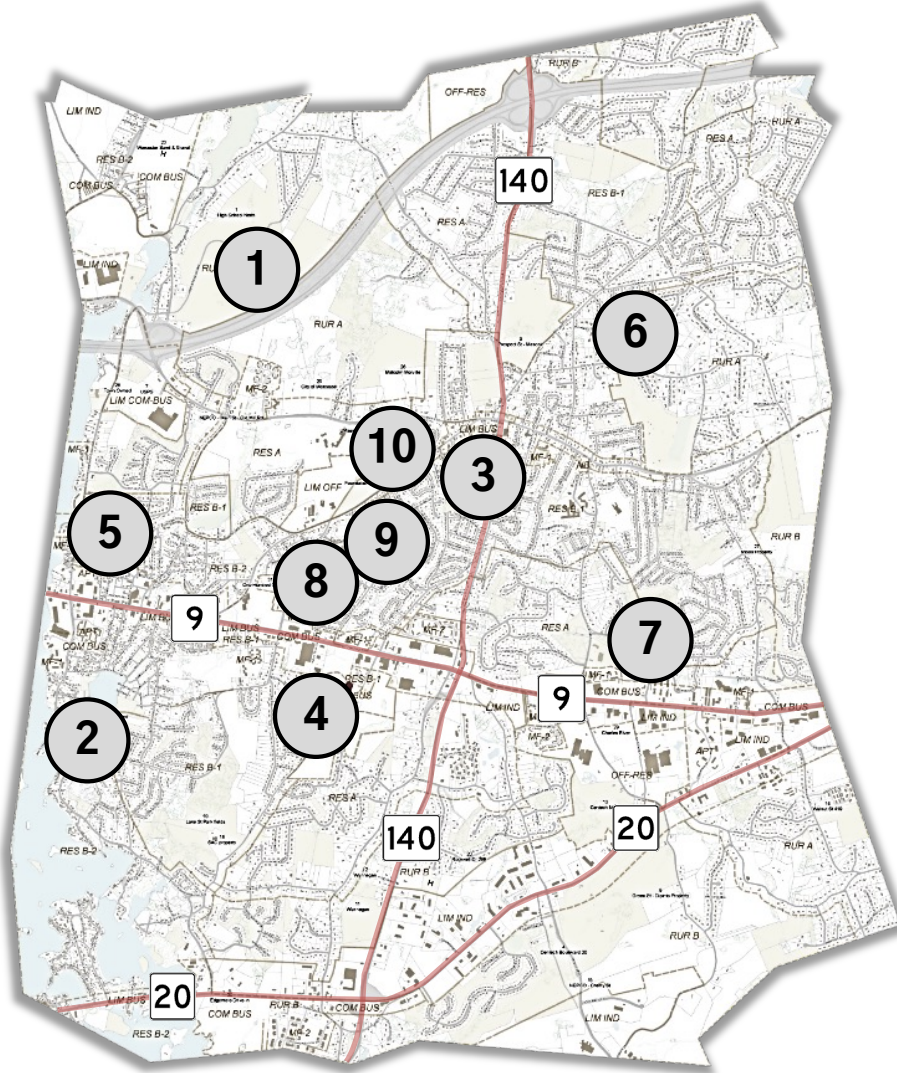
OAK



SPS ADMINISTRATION



PRE-K THROUGH 12 CAPITAL INVESTMENT AND ASSESSMENT STUDY



- 1 – SHREWSBURY HIGH SCHOOL
- 2 – CALVIN COOLIDGE SCHOOL
- 3 – WALTER J. PATON SCHOOL
- 4 – MAJOR HOWARD BEAL SCHOOL
- 5 – PARKER ROAD PRESCHOOL
- 6 – SPRING STREET SCHOOL
- 7 – FLORAL STREET SCHOOL
- 8 – SHERWOOD MIDDLE SCHOOL
- 9 – OAK MIDDLE SCHOOL
- 10 – SPS ADMINISTRATION

PROJECTED ENROLLMENT / SPACE NEEDS

- Calculation methodology based on:
 - Enrollment Forecasts
 - 2021/2031 McKibben Report
 - MSBA Space Summary Template
 - Pro-rated based on:
 - SPS classroom enrollment policy
 - SPS educational plan & pedagogy
 - Exclusion of portable/modular classrooms for all applicable options

ENROLLMENT & AREA FORECASTS

ENROLLMENT

	2022- 2023	2031- 2032	10-YR DELTA
PRE-K			
PARKER ROAD	203	242	39
ELEMENTARY (K-4)	1,975	1,971	(4)
MAJOR HOWARD BEAL	609	548	(61)
CALVIN COOLIDGE	247	292	45
FLORAL STREET	520	510	(10)
SPRING STREET	308	303	(5)
WALTER J PATON	291	318	27
MIDDLE SCHOOL (5-8)	1,892	1,675	(217)
SHERWOOD (5-6)	948	820	(128)
OAK (7-8)	944	855	(89)
HIGH SCHOOL (9-12)			
SHREWSBURY HIGH	1,821	1,749	(72)

DESIGN CAPACITY

- The student body population that a given school can support as it currently exists
- Calculated based on:
 - Current programmatic usage
 - SPS School Committee policy guidelines for class size
 - MSBA guidelines for classroom square footage sizes
- Portable/modular classroom square footage also excluded from this calculation

ENROLLMENT / DESIGN CAPACITY

	ENROLLMENT			DESIGN CAPACITY			
	2022-2023	2031-2032	10-YR DELTA	MIN.	MEAN	MAX.	10-YR DELTA*
PRE-K							
PARKER ROAD	203	242	39	--	--	--	--
ELEMENTARY (K-4)	1,975	1,971	(4)	1,806	1,896	1,988	(75)
MAJOR HOWARD BEAL	609	548	(61)	808	848	888	300
CALVIN COOLIDGE	247	292	45	190	200	210	(92)
FLORAL STREET	520	510	(10)	467	490	514	(20)
SPRING STREET	308	303	(5)	145	152	160	(151)
WALTER J PATON	291	318	27	196	206	216	(112)
MIDDLE SCHOOL (5-8)	1,892	1,675	(217)	1,578	1,651	1,722	(24)
SHERWOOD (5-6)	948	820	(128)	800	837	873	17
OAK (7-8)	944	855	(89)	778	814	849	(41)
HIGH SCHOOL (9-12)							
SHREWSBURY HIGH	1,821	1,749	(72)	1,185	1,250	1,316	(499)

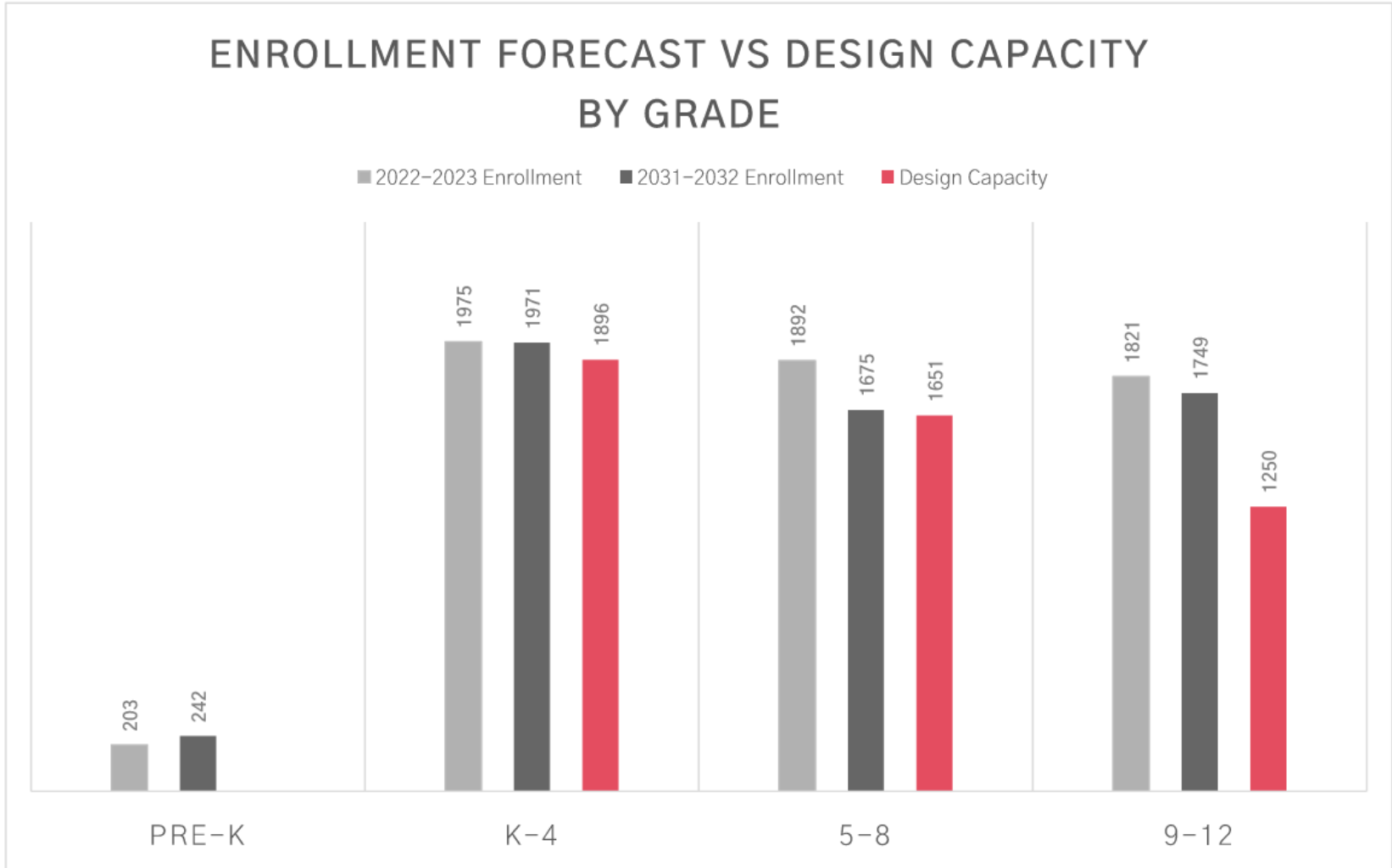
*10-YR DESIGN CAPACITY DELTA = (MEAN DESIGN CAPACITY) - (2031-2032 ENROLLMENT)

ENROLLMENT / DESIGN CAPACITY

	ENROLLMENT	DESIGN CAPACITY	
	2031-2032	MEAN	10-YR DELTA*
PRE-K			
PARKER ROAD	242	--	--
ELEMENTARY (K-4)	1,971	1,896	(75)
MAJOR HOWARD BEAL	548	848	300
CALVIN COOLIDGE	292	200	(92)
FLORAL STREET	510	490	(20)
SPRING STREET	303	152	(151)
WALTER J PATON	318	206	(112)
MIDDLE SCHOOL (5-8)	1,675	1,651	(24)
SHERWOOD (5-6)	820	837	17
OAK (7-8)	855	814	(41)
HIGH SCHOOL (9-12)			
SHREWSBURY HIGH	1,749	1,250	(499)

*10-YR DESIGN CAPACITY DELTA = (MEAN DESIGN CAPACITY) - (2031-2032 ENROLLMENT)

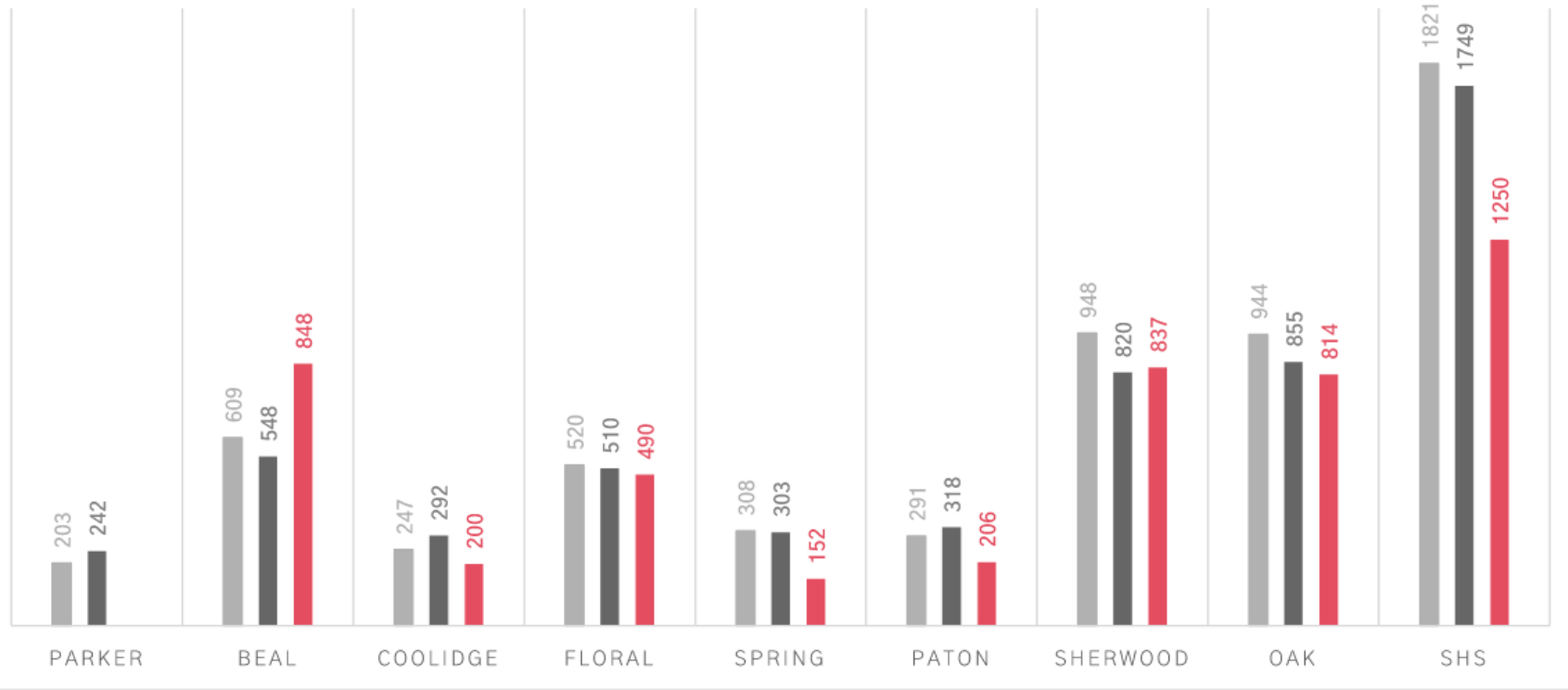
ENROLLMENT & AREA FORECASTS



ENROLLMENT & AREA FORECASTS

ENROLLMENT FORECAST VS DESIGN CAPACITY BY SCHOOL

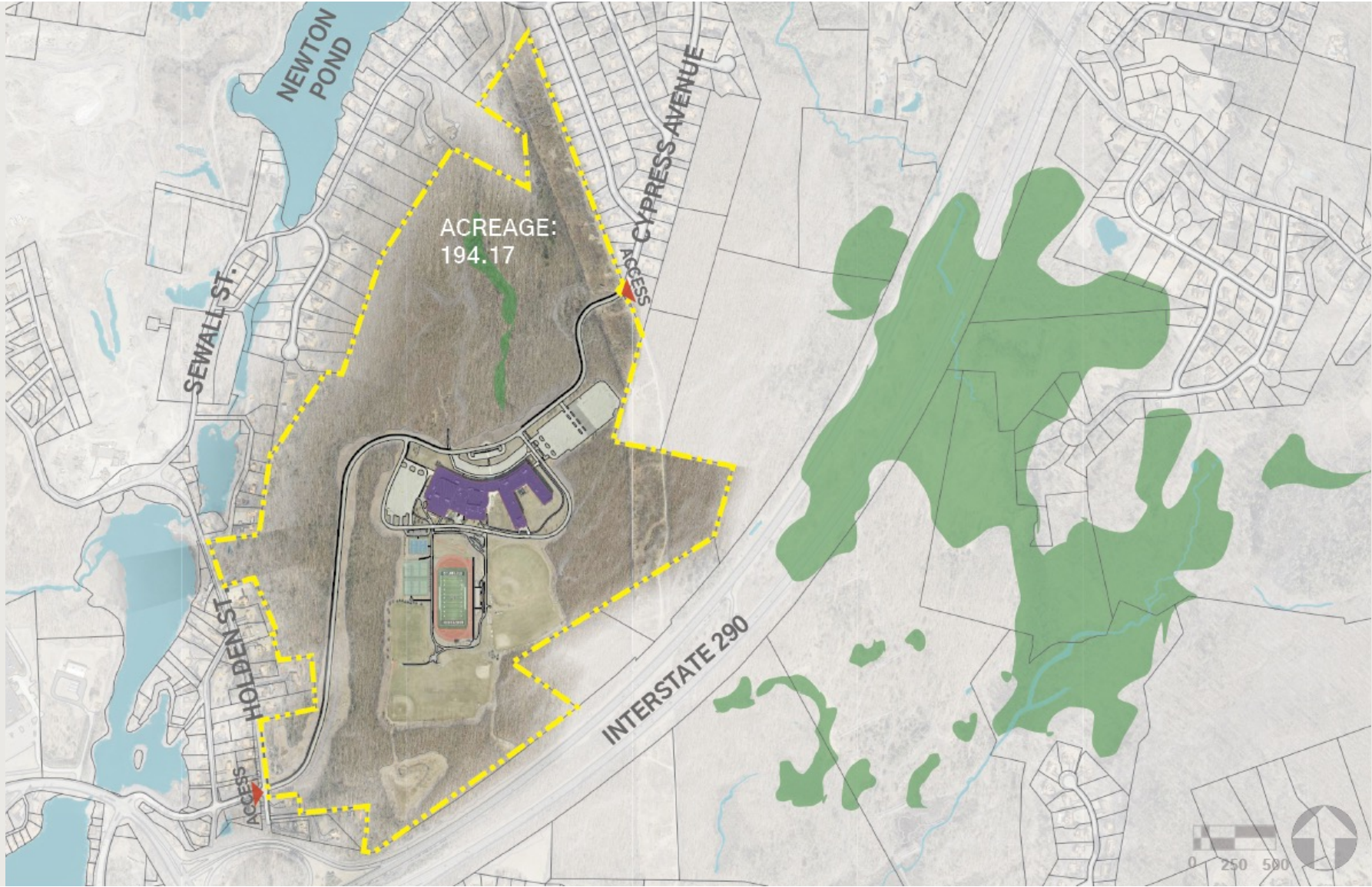
■ 2022-2023 Enrollment ■ 2031-2032 Enrollment ■ Design Capacity



BUILDING ASSESSMENTS



SHREWSBURY HS (9-12)



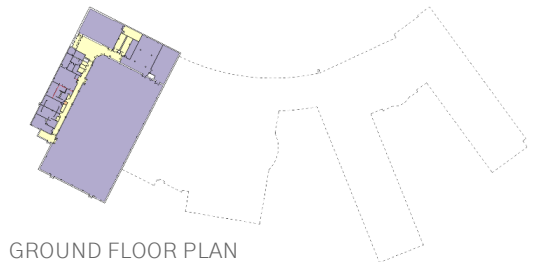
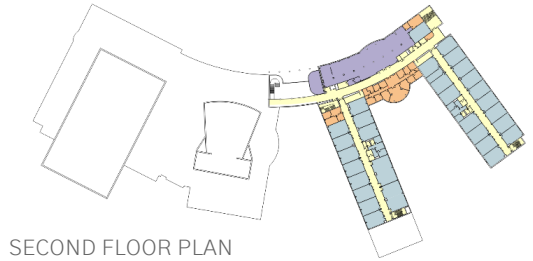
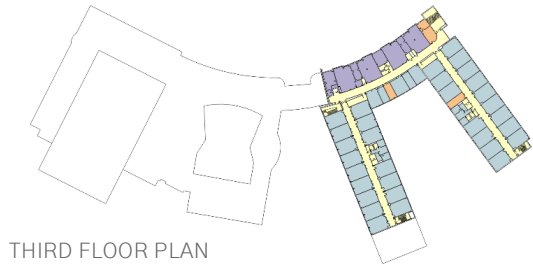
SHREWSBURY HS (9-12)

SCHOOL YEAR	TOTAL ENROLLMENT (9-12)	CHANGE
2022-23	1,821	—
2031-32	1,749	(72)
*Design Capacity	1,250	(499)

Enrollment numbers taken from “Population and Enrollment Forecasts, 2022-23 Through 2031-32”
by McKibben Demographic Research, March 2022; see Appendix for full report.

*Design Capacity refers to the mean student body population that a given school can support as it currently exists.
Mean value is calculated based on the SPS School Committee policy guidelines for class size,
as well as MSBA guidelines for classroom square footage size.
Note that portable classroom square footage is excluded from this calculation.
See Educational Review Introduction for the calculation methodology.

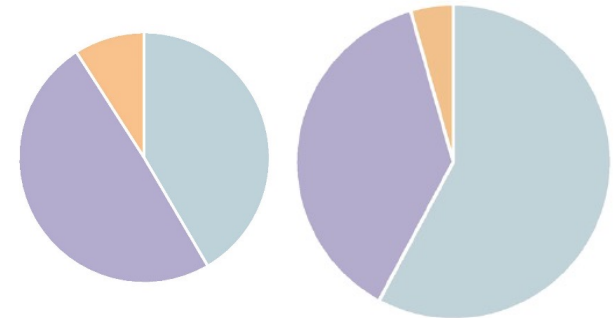
SHREWSBURY HS (9-12)



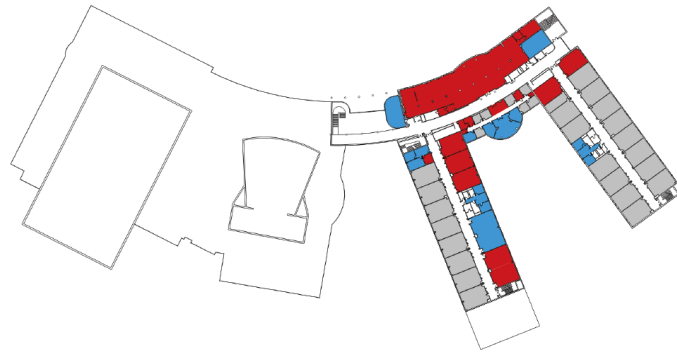
SPACE TYPE	EXISTING SQFT (NET)	MSBA GUIDELINE SQFT (NET)	DEFICIENCY (GROSS GF=1.5)
CORE ACADEMIC SPACES <small>* Excludes portable classroom square footage.</small>	73,969	101,535	(41,349)
SPECIAL EDUCATION	9,669	26,160	(24,737)
OTHER (PRE-K SUITE)	1,743	0	2,615
ACADEMIC TOTAL	85,381	127,695	(63,471)
ART & MUSIC	10,395	8,350	3,068
VOCATIONS & TECHNOLOGY	7,722	21,600	(20,817)
HEALTH & PHYSICAL EDUCATION	47,454	26,194	31,890
MEDIA CENTER	9,201	10,831	(2,445)
AUDITORIUM & DRAMA	11,111	10,400	1,067
DINING & FOOD SERVICE	15,628	13,668	2,940
CORE TOTAL	101,511	91,043	15,702
MEDICAL	1,270	1,510	(360)
ADMINISTRATION & GUIDANCE	11,965	6,150	8,723
CUSTODIAL & MAINTENANCE	5,021	2,937	3,126
ADMINISTRATIVE TOTAL	18,256	10,597	11,489
TOTAL FLOOR AREA	205,148	229,335	(36,281)

LEGEND

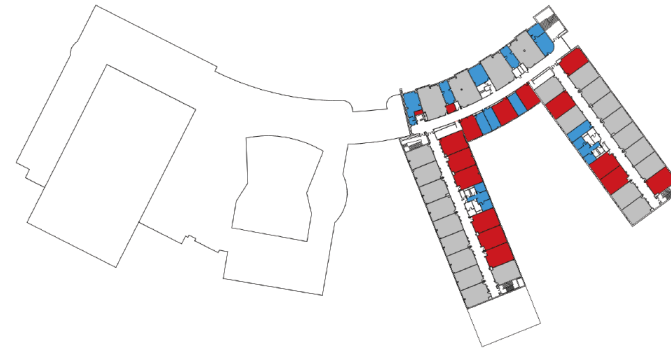
- ACADEMIC SPACES
- CORE SPACES
- ADMINISTRATIVE SPACES



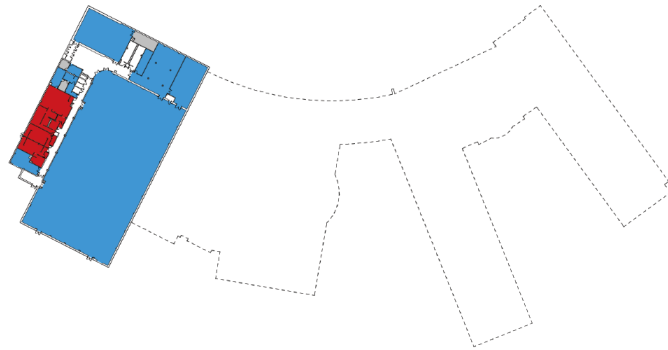
SHREWSBURY HS (9-12)



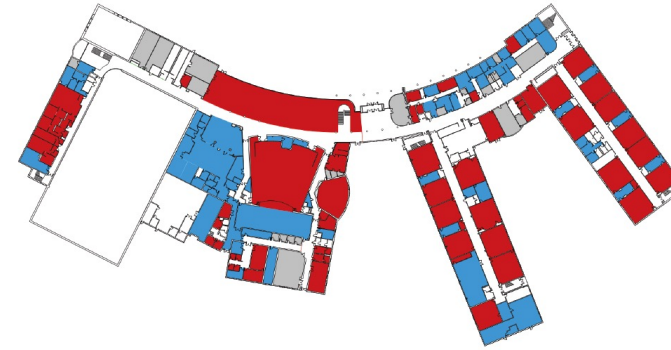
SECOND FLOOR PLAN



THIRD FLOOR PLAN



GROUND FLOOR PLAN

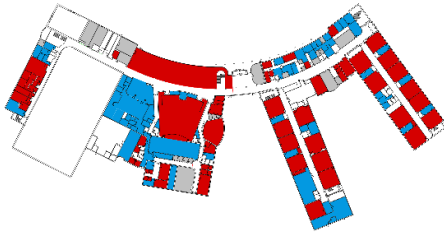


FIRST FLOOR PLAN

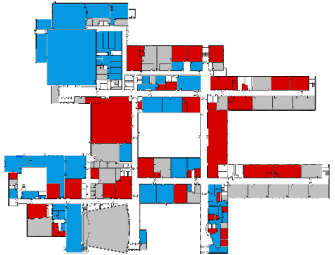
LEGEND

- 10% OVER MSBA GUIDELINES
- MEETS MSBA GUIDELINES
- 10% UNDER MSBA GUIDELINES
- MODULAR/PORTABLE

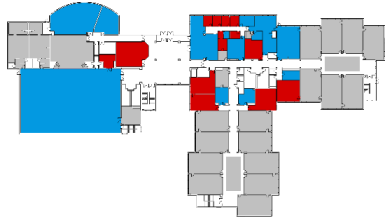
SCHOOL PLANS



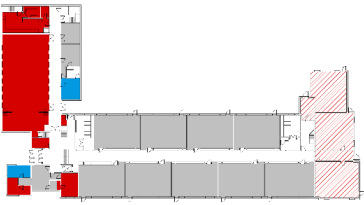
SHREWSBURY HIGH SCHOOL



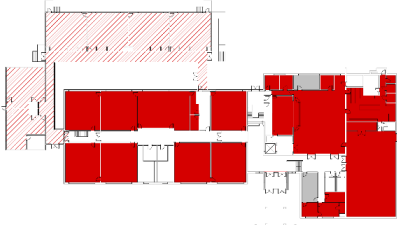
OAK MIDDLE SCHOOL



SHERWOOD MIDDLE SCHOOL



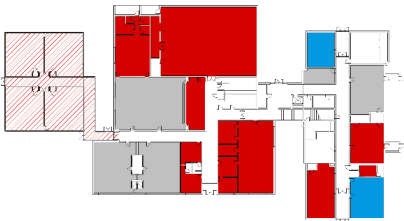
SPRING STREET SCHOOL



WALTER J. PATON SCHOOL



FLORAL STREET SCHOOL



CALVIN COOLIDGE SCHOOL



MAJ. HOWARD W. BEAL SCHOOL



PARKER ROAD PRESCHOOL

PRIORITIES

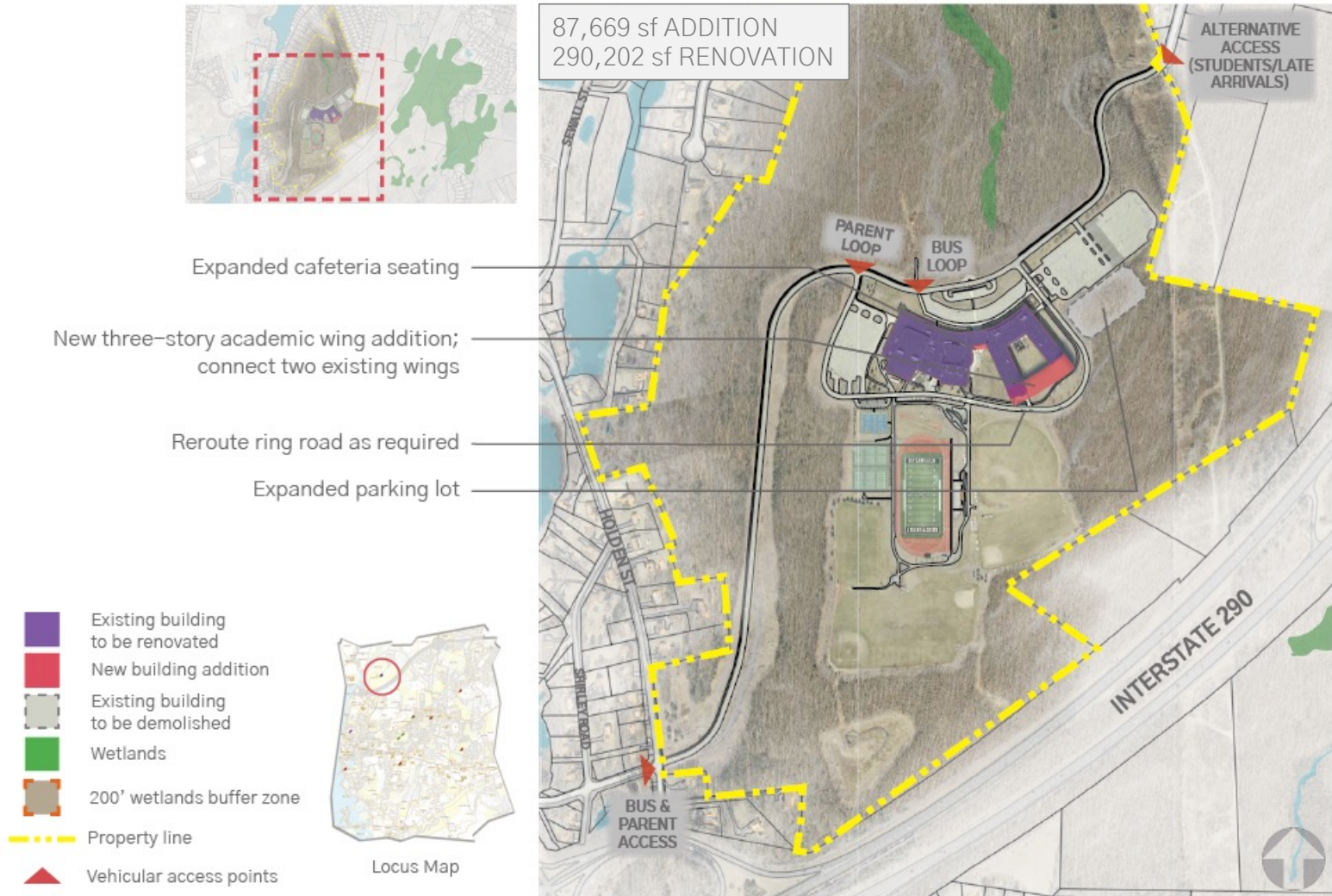
- Address Overcrowding at the High School
- Replace Coolidge Elementary School & Expand District Wide Pre-K
- Parity Among the K-4 Schools
- Address Aging Building Stock & Provide 21st Century Learning Spaces
- Net Zero Upgrades
- Provide Air Conditioning for Equity Across the District
- Unify School Department Administration

BUDGET DEVELOPMENT METHODOLOGY

- 2024 Unit pricing
- New Construction vs Addition/Renovation
 - Tier I vs Tier II renovations
 - Tier I: major interior renovation, envelope improvements
 - Tier II: minor interior remodel (no space reconfiguration)
- Systems Upgrades
 - Add air conditioning – all buildings
- Net Zero Upgrades
 - Improvements to building systems included in base numbers
 - PV array costs listed separately from total budget numbers
- All budgets included in the presentation are Construction Cost Only

HIGH SCHOOL (1749)

ADDITION & RENOVATION



COOLIDGE (300)

NEW CONST. - K-4

- Hatched areas indicate town-owned land to add (change from playground to school use)
- New play field
- New paved play area
- New two-story academic wing
- New one-story gymnasium/cafeteria/administrative wing
- Demolish school in its entirety; student population to temporarily transfer to Beal during construction; create new expanded parking lot & reconfigured bus turnaround

-  New building
-  Existing building to be demolished
-  Wetlands
-  200' wetlands buffer zone
-  Property line
-  Vehicular access points



Locus Map



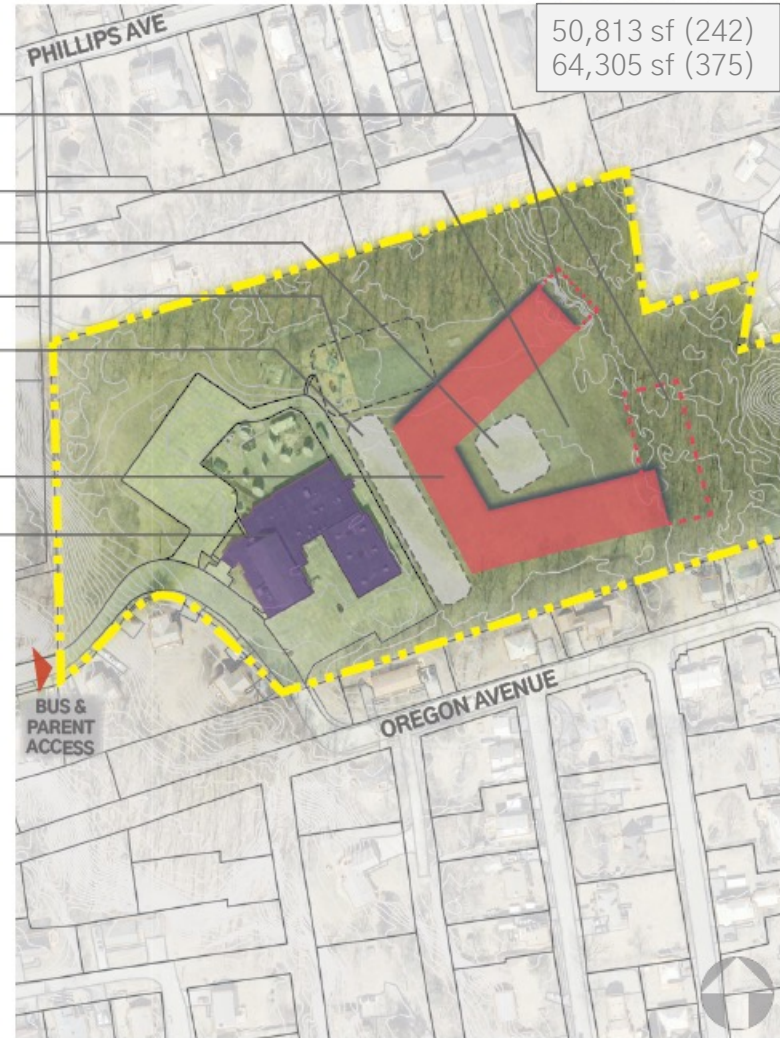
PRE-KINDERGARTEN NEW CONST. - DISTRICT WIDE PRE-K

-  Existing building to be renovated
-  New building addition
-  Existing building to be demolished
-  Wetlands
-  200' wetlands buffer zone
-  Property line
-  Vehicular access points



Locus Map

- Potential future expansion for a 375-student population
- New play field
- New paved play area
- Existing play area to remain
- Expanded parking lot & bus loop
- New one-story preschool for 242 students
- Existing building to remain; reallocate for municipal use



COOLIDGE & PRE-K (542)

NEW CONST. - K-4 W/ DISTRICT PRE-K

Hatched areas indicate town-owned land to add (change from playground to school use)

New play field

New paved play area

New paved play area for pre-K/K students

New two-story academic wing
(pre-K & K on first floor; 1-4 on second floor)

New one-story gymnasium/cafeteria/
administrative wing

Demolish school in its entirety; student
population to temporarily transfer to Beal
during construction; create new expanded
parking lot & reconfigured bus turnaround

-  New building
-  Existing building to be demolished
-  Wetlands
-  200' wetlands buffer zone
-  Property line
-  Vehicular access points



Locus Map



Consolidate School Department Administration

- Currently split between Town Hall, 15 Parker Road, and spaces throughout the district
- Based on previous reports $\pm 6,000$ net sq.ft. is needed
- Consolidating into one location at Town Hall

Leverage & Eliminate
through building orientation
& envelope design

1

Reduce & Optimize
through building systems
efficiencies

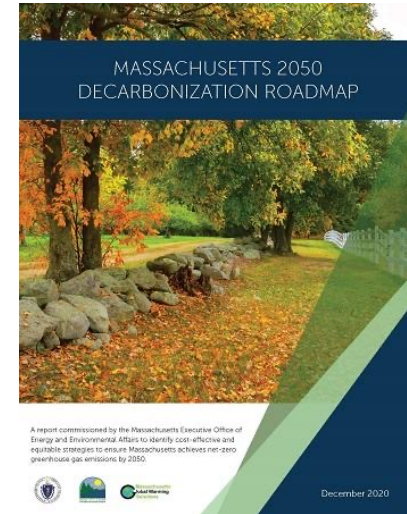
2

Verify & Educate
through monitoring &
occupant engagement

3

Generate & Offset
through renewables,
storage, & credits

4



Goal for this study was to make equipment and building system improvements to reduce or eliminate the reliance on fossil fuels with the goal of approaching net zero. Then offset the remaining deficit through renewable energy like photovoltaic panels and/or geothermal wells

PRIORITIES

- Address Overcrowding at the High School
- Replace Coolidge Elementary School & Expand District Wide Pre-K
- Parity Among the K-4 Schools
- Address Aging Building Stock & Provide 21st Century Learning Spaces
- Net Zero Upgrades
- Provide Air Conditioning for Equity Across the District
- Unify School Department Administration

PARKER ROAD



COOLIDGE



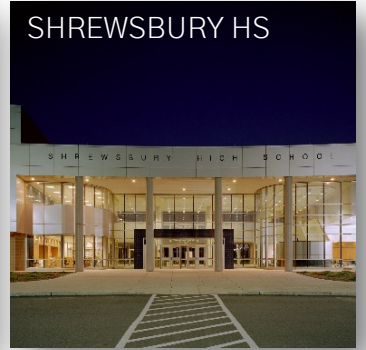
SPRING ST



SHERWOOD



SHREWSBURY HS



BEAL



FLORAL ST



PATON



OAK



SPS ADMINISTRATION



PRE-K THROUGH 12 CAPITAL INVESTMENT AND ASSESSMENT STUDY