

# STAR ASSESSMENTS: NEW TOOLS FOR ALL

***An Overview for School Committee  
December 2, 2020***

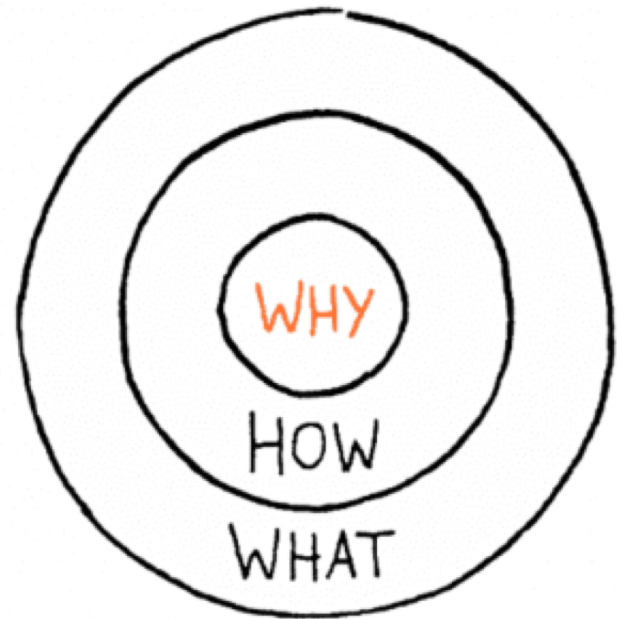
# THE BIG IDEA: INFORMATION IS POWER

- Why we are implementing a universal screener
- What the Star assessment does, and
- How the Star assessment will be useful to us



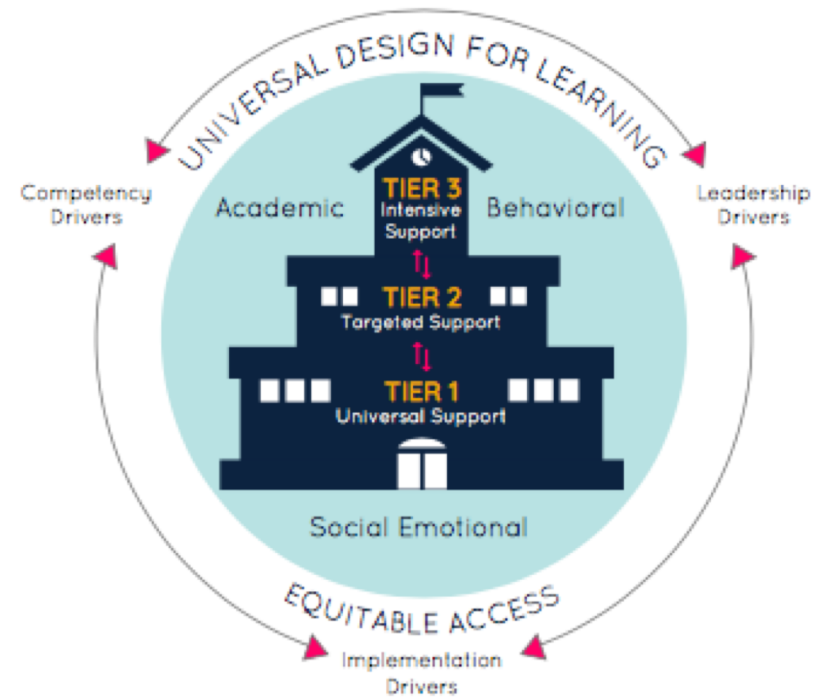
# WHY THIS TOOL, AND WHY NOW?

- Why we are implementing a universal screener
- What the Star assessment does, and
- How the Star assessment will be useful to us



# THE POWER OF A UNIVERSAL SCREENING TOOL

**Universal screening** is the systematic **assessment** of all students on academic and/or social-emotional indicators for the **purpose of** identifying students who are at-risk, and may require support that varies in terms of level, intensity, and duration.





# STUDENTS' SKILLS ARE BUILT ON A SOLID FOUNDATION



**Tier 3: The Core + Even more**

**Tier 2: The Core + More**

**Tier 1: The Core**

Taken from the DESE's MTSS Mobilization Guide

# INFORMATION TEAMS CAN USE

- Typically students take 15-20 minutes to take each assessment.
- Teachers should not have to do more than supervise the process during test administration.
- AFTER testing educators will have the information they need to assign their students “just right” levels in Freckle.



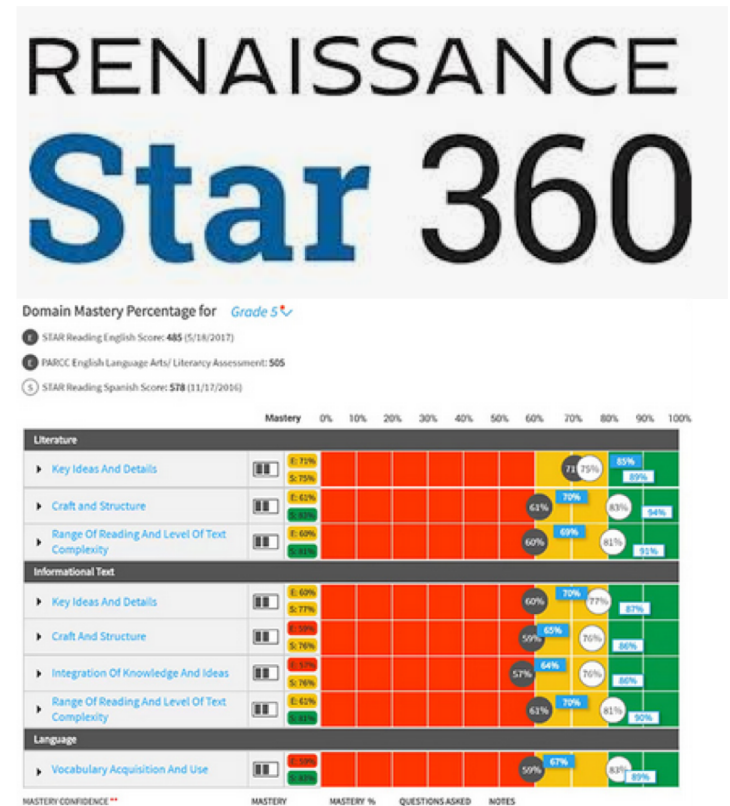
# THIS TOOL ALIGNS WITH OUR STRATEGIC GOALS FOR 2022:

## **LEARNING ENVIRONMENTS WHERE EVERYONE'S SUCCESS MATTERS**

- **Create a common understanding of the benefits of inclusive schools and develop a shared, systematic approach to ensure that everyone has equitable access and opportunity for successful learning**
- **Ensure that all staff actively participate in professional development focused on inclusive and culturally proficient practices that improve learning and school cultures**
- **Analyze data related to academic performance and other indicators of success to identify existing gaps among populations; determine and implement action steps for improvement; and demonstrate success at closing these gaps**

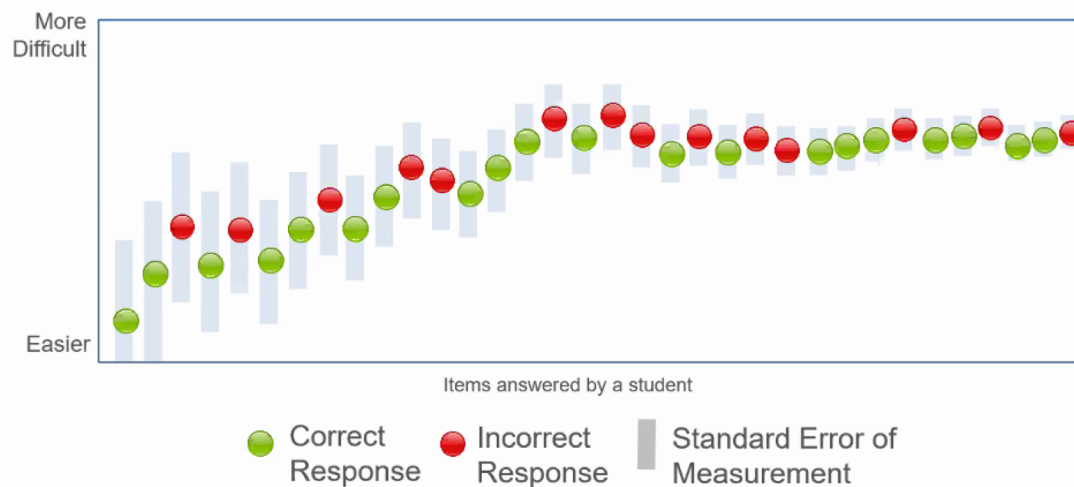
# A GOOD TOOL ~ AT THE RIGHT TIME

- Why we are implementing a universal screener
- What the Star assessment does, and
- How the Star assessment will be useful to us



# STAR IS AN ADAPTIVE SOFTWARE PROGRAM

## How computer-adaptive testing works



RENAISSANCE

©Copyright 2020 Renaissance Learning Inc. All rights reserved. 17

- Responses to questions reveal student understanding
- The program adjusts based on student answers, both correct and incorrect- this takes time
- The program takes snapshots AND allows us to monitor progress between snapshots

# THE BASICS

## Computer Adaptive Technology (CAT)

### RENAISSANCE **Star Reading**®

- Star Reading items assess skills in five key domains
- Star Math items assess skills in four broad domains
- 34 items
- Designed for students in grades 1-12
- Can be given to kindergarten students who have basic reading and math skills

### RENAISSANCE **Star Math**®

### RENAISSANCE **Star Early Literacy**®

- Items assess skills within three domains – including early numeracy
- 27 items
- Designed for students in pre-K thru 3<sup>rd</sup> grade
- For beginning readers who do not read independently or need early literacy skills assessed

# WHAT WILL STUDENTS EXPERIENCE?

## Item Time Limits

90 seconds  
per item

\*Extended: 3x

RENAISSANCE  
**Star** Early Literacy®

RENAISSANCE  
**Star** Math®

3 minutes  
per item

\*Extended: 2x



**Grades K—2**

60 sec per item  
(first 10 items)

120 sec per item  
(remaining skill items)

\*Extended: 270 sec

RENAISSANCE  
**Star** Reading®

45 sec per item  
(first 10 items)

90 sec per item  
(remaining skill items)

\*Extended: 3x

**Grades 3—12**

# A TEST SCORE IS A SNAPSHOT

What's the big picture?





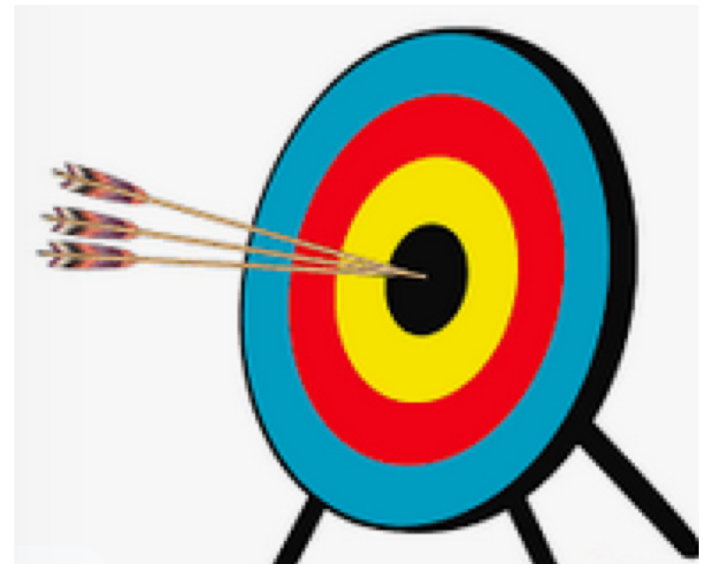
WHAT WILL WE LEARN?

**Student performance is on the Star scale**



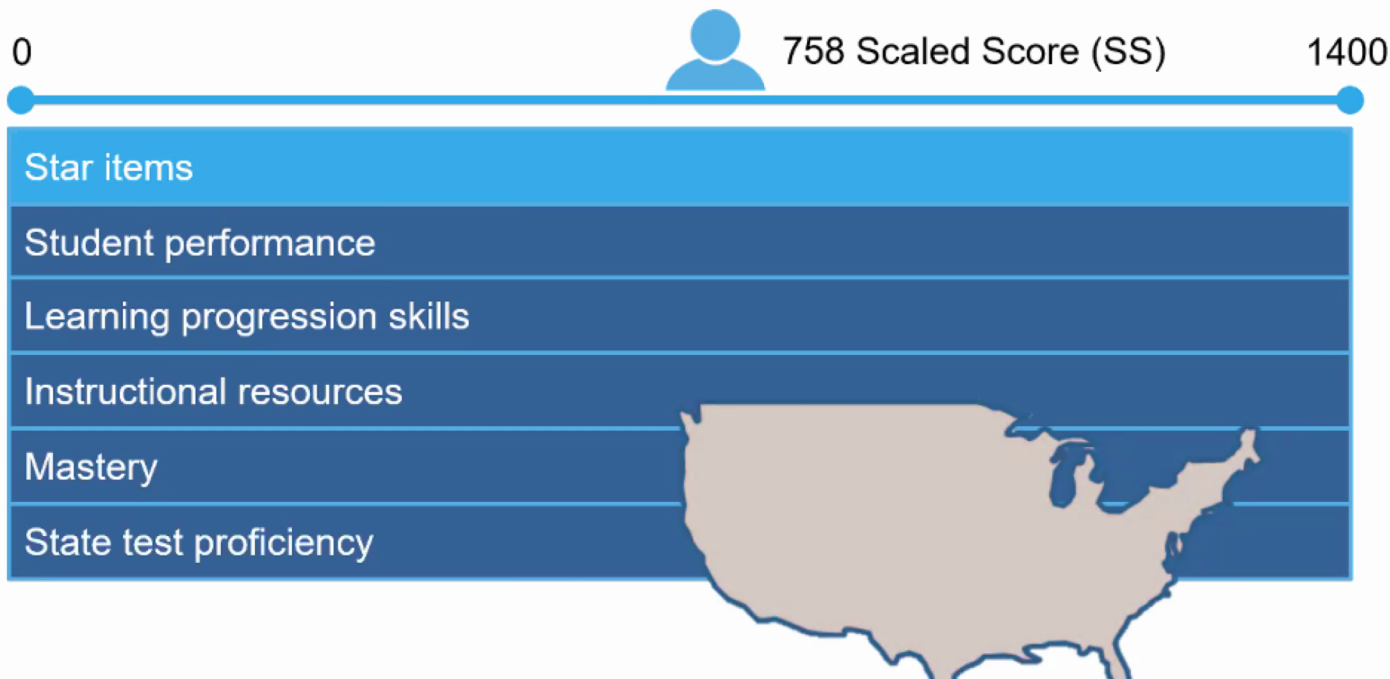
# A TOOL TO HELP

- Why we are implementing a universal screener
- What the Star assessment is, and
- How the Star assessment will be useful to us



# SCALED SCORES ALLOW US TO PREDICT SUCCESS OR STRUGGLE

**State test proficiency categories are on the Star scale**



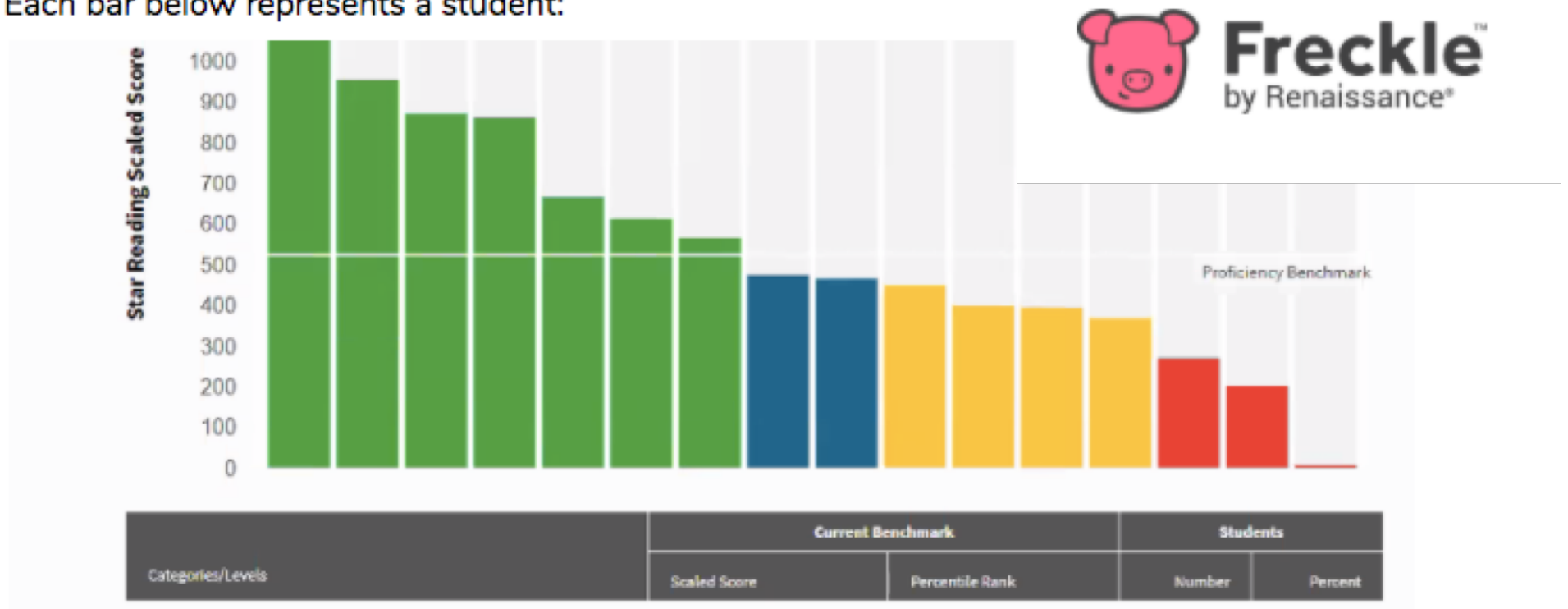
# LET'S SEE WHAT DATA CAN DO FOR US

Each bar below represents a student:



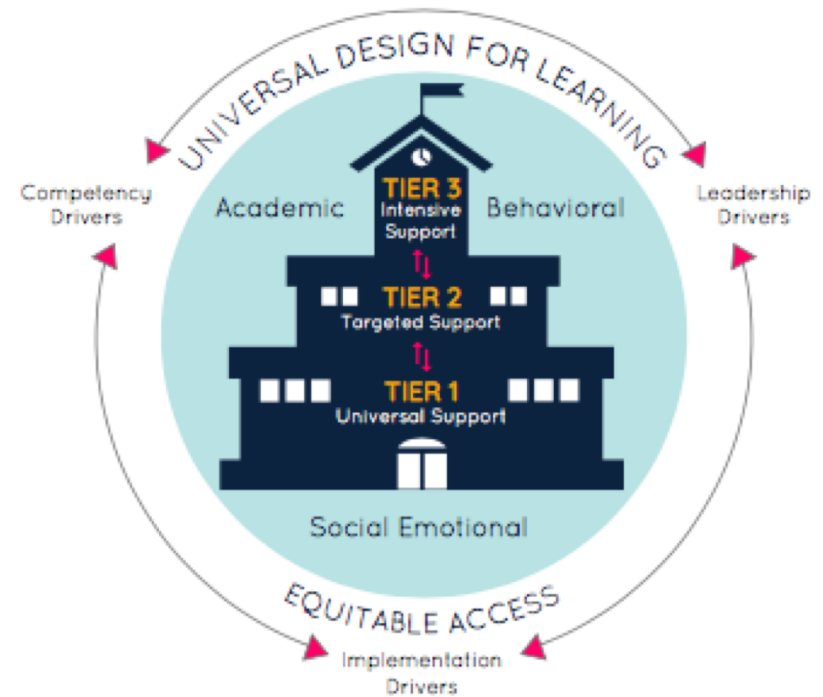
# LET'S SEE WHAT WHAT WE ARE DOING WELL WITH STUDENTS

Each bar below represents a student:



# THE POWER OF A UNIVERSAL SCREENING TOOL

**Universal screening** is the systematic **assessment** of all students on academic and/or social-emotional indicators for the **purpose of** identifying students who are at-risk, and may require support that varies in terms of level, intensity, and duration.



# WHAT'S NEXT?

## Important Dates

### Testing Administration Schedule

#### *Elementary Target Dates*

Test Administration for Students in Cohorts A & B

12/7 & 12/8

Test Administration for Students in Cohort C

12/10 & 12/11

Test Administration for Students in Cohort D

Week of 12/14

#### *Middle Level Target Dates*

Test Administration Window, Grades 5-8

12/7-12/18

**Test Administration Completion Date for All Students December 18, 2020**



# THANKS

Thanks to the following volunteers for going first:

<i>Lynn Pinto</i>	<i>Beal, Kindergarten</i>
<i>Jen Flemming</i>	<i>Coolidge Grade 1</i>
<i>Ani Marold</i>	<i>Floral Grade 3</i>
<i>Meghan Kelley</i>	<i>Floral Grade 3</i>
<i>Nicole Cormier</i>	<i>Paton Grade 4</i>
<i>Lindsey Halloran</i>	<i>Spring Grade 2</i>
<i>Vickie McCarthy</i>	<i>Sherwood Grade 5</i>
<i>Moira Cristy</i>	<i>Sherwood Grade</i>
<i>Sara Heal</i>	<i>Oak Grades 7 &amp; 8</i>
<i>Jen Dufault</i>	<i>Oak Grade 8</i>





QUESTIONS?

