



**School Committee
Meeting Book**

**November 4, 2020
7:00 pm**

**Town Hall -100 Maple Avenue
Selectmen's Meeting Room**



SHREWSBURY PUBLIC SCHOOLS SCHOOL COMMITTEE MEETING

AGENDA

November 4, 2020 7:00pm
Town Hall—Selectmen's Meeting Room
100 Maple Avenue

THIS MEETING IS NOT OPEN TO PHYSICAL PARTICIPATION BY THE PUBLIC. TOWN HALL IS CLOSED TO THE PUBLIC FOR MEETINGS. THIS MEETING WILL BE BROADCAST LIVE ON LOCAL CABLE CHANNELS 29 & 329 AND STREAMED LIVE ON THE SHREWSBURY MEDIA CONNECTION WEBSITE AT <https://videoplayer.telvue.com/player/iE0p5N2b-Se5BhxS-3KDrHfUWzLHfku2/stream/722>. SEE BELOW FOR INFORMATION ON CONTACTING THE CHAIR OF THE SCHOOL COMMITTEE RE: PUBLIC PARTICIPATION.

On March 12, 2020, Governor Baker issued an Executive Order modifying certain requirements of the Open Meeting Law, to enable public bodies to carry out their responsibilities while adhering to public health recommendations regarding social distancing.

The Executive Order relieves public bodies from the requirement in the Open Meeting Law that meetings be conducted in a public place that is open and physically accessible to the public, provided that the public body makes provision to ensure public access to the deliberations of the public body through adequate, alternative means. "Adequate, alternative means" may include, without limitation, providing public access through telephone, internet, or satellite enabled audio or video conferencing or any other technology that enables the public to clearly follow the proceedings of the public body in real time. A municipal public body that for reasons of economic hardship and despite best efforts is unable to provide alternative means of public access in real time may instead post on its municipal website a full and complete transcript, recording, or other comprehensive record of the proceedings as soon as practicable afterwards.

In addition, all members of a public body may participate in a meeting remotely; the Open Meeting Law's requirement that a quorum of the body and the chair be physically present at the meeting location is suspended.

All other provisions of the Open Meeting Law, such as the requirements regarding posting notice of meetings and creating and maintaining accurate meeting minutes, as well as the limited, enumerated purposes for holding an executive session, remain in effect.

While for this meeting the School Committee and members of the School Department administrative team will physically meet at the location listed above, members of the public may not attend in person. If a member of the public wishes to participate remotely in the Public Participation portion of the meeting, they should contact the Committee Chair, Ms. Sandra Fryc, by sending an email to schoolcommittee@shrewsbury.k12.ma.us.

Items

Suggested time allotments

- I. Public Participation
- II. Chairperson's Report & Members' Reports
- III. Superintendent's Report
- IV. Time Scheduled Appointments:
 - A. Update on Reopening of the 2020-2021 School Year: Report
 - B. Student Enrollment & Class Sizes: Annual Report
- V. Curriculum
- VI. Policy
- VII. Finance & Operations

7:00-7:05

7:05 – 7:35

7:35 – 7:55



**SHREWSBURY PUBLIC SCHOOLS
SCHOOL COMMITTEE MEETING**

- | | |
|--------------------------------------------------------------------|-------------|
| A. Redistricting of Elementary Attendance Zones: Update on Process | 7:55 – 8:20 |
| B. Fiscal Year 2022 Budget Calendar: Vote | 8:20 – 8:30 |

VIII. Old Business

IX. New Business

X. Approval of Minutes	8:30 – 8:35
------------------------	-------------

XI. Executive Session	8:35 – 9:00
-----------------------	-------------

- A. For the purpose of addressing G.L. c. 30A, § 21(a)(7) “[t]o comply with, or act under the authority of, any general or special law or federal grant-in-aid requirements” (“Purpose 7”), Open Meeting Law, G.L. c. 30A, §§ 22(f), (g) – for the purpose of reviewing, approving, and/or releasing executive session minutes.
- B. For the purpose of addressing G.L. c. 30A, § 21(a)(3) “to discuss strategy with respect to collective bargaining or litigation if an open meeting may have a detrimental effect of the bargaining or litigating position of the public body and the chair so declares” (“Purpose 3”) - the Shrewsbury Education Association Unit A; Shrewsbury Education Association Unit B; the Shrewsbury Paraprofessional Association; and/or the Shrewsbury Cafeteria Workers.

XII. Adjournment

Next regular meeting: November 18, 2020



SHREWSBURY PUBLIC SCHOOLS SCHOOL COMMITTEE MEETING

ITEM NO: I Public Participation

MEETING DATE: 11/04/20

SPECIFIC STATEMENT OR QUESTION:

Will the School Committee hear thoughts and ideas from the public regarding the operations and the programs of the school system?

BACKGROUND INFORMATION:

Copies of the policy and procedure for Public Participation are available to the public at each School Committee meeting.

ITEM NO: II. Chairperson's Report/Members' Reports

SPECIFIC STATEMENT OR QUESTION:

Will the School Committee hear a report from the Chairperson of the School Committee and other members of the School Committee who may wish to comment on school affairs?

BACKGROUND INFORMATION:

This agenda item provides an opportunity for the Chairperson and members of the Shrewsbury School Committee to comment on school affairs that are of interest to the community.

STAFF AVAILABLE FOR PRESENTATION:

School Committee Members
Ms. Sandra Fryc, Chairperson
Mr. Jon Wensky, Vice Chairperson
Dr. B. Dale Magee, Secretary
Ms. Lynsey Heffernan, Committee Member
Mr. Jason Palitsch, Committee Member

ITEM NO: III. Superintendent's Report

SPECIFIC STATEMENT OR QUESTION:

Will the School Committee hear a report from Dr. Joseph M. Sawyer, Superintendent of Schools?

BACKGROUND INFORMATION:

This agenda item allows the Superintendent of the Shrewsbury Public Schools to comment informally on the programs and activities of the school system.

STAFF AVAILABLE FOR PRESENTATION:

Dr. Joseph M. Sawyer, Superintendent of Schools

ACTION RECOMMENDED FOR ITEMS I, II, & III:

That the School Committee accept the report and take such action as it deems in the best interest of the school system.



**SHREWSBURY PUBLIC SCHOOLS
SCHOOL COMMITTEE MEETING**

ITEM NO: **IV. Time Scheduled Appointments:** MEETING DATE: **11/04/20**
A. Update on Reopening of the 2020-2021 School Year: Report

BACKGROUND INFORMATION:

Dr. Sawyer and members of the leadership team will provide an update on the reopening of schools for students for the 2020-2021 school year.

ACTION RECOMMENDED:

That the School Committee hear the report and take such action as it deems in the best interest of the school system.

STAFF AVAILABLE FOR PRESENTATION:

Dr. Joseph M. Sawyer, Superintendent of Schools
District Administrators



**SHREWSBURY PUBLIC SCHOOLS
SCHOOL COMMITTEE MEETING**

ITEM NO: IV. Time Scheduled Appointments: MEETING DATE: 11/04/20
B. Student Enrollment & Class Sizes: Annual Report

BACKGROUND INFORMATION:

Each year the district is required to provide a report on enrollment as of October 1 to the Department of Elementary and Secondary Education. An overview of this district wide enrollment data will be presented for School Committee review by Dr. Sawyer. The report is enclosed.

ACTION RECOMMENDED:

That the School Committee accept the report and take whatever steps it deems necessary in the interests of the Shrewsbury Public Schools.

STAFF AVAILABLE FOR PRESENTATION:

Dr. Joseph M. Sawyer, Superintendent of Schools

Shrewsbury Public Schools

Preschool – Grade 12 Enrollment Report

Preschool – Grade 8 Class Size Report

2020-2021

Data based on enrollment numbers as of October 1, 2020

SHREWSBURY PUBLIC SCHOOLS

ENROLLMENT HISTORY

The Importance and Uses of Enrollment Data

Statistical Reports

The Massachusetts Department of Elementary and Secondary Education Student Information Management System (SIMS) is a student-level data collection system that allows the Department to collect and analyze accurate and comprehensive information, to meet federal and state reporting requirements, and to inform policy and programmatic decisions. The SIMS has two important components:

- A unique student identifier for all students receiving a publicly funded education in Massachusetts, and
- Transmissions of data from districts to the Department for all students via the security portal.

Currently, there are 52 data elements that are submitted for each student record. Each student record is submitted three times per year to the Department.

Since student enrollment actually changes virtually every day, the October 1st enrollment is used as the annual “snapshot” of headcount enrollment and used for comparative purposes year over year and between districts.

State and Federal Funding

Student enrollment and demographics are captured by the 52 data elements reported in SIMS. This is where, for example, students are coded as English Language Learners, Special Education, Economically Disadvantaged, etc. For Chapter 70 state aid, the October 1st data is used to derive Foundation Enrollment and calculate each district’s Foundation Budget. and correspondingly distribute state aid. Furthermore, federal grant entitlement funds are allocated to each school district based upon district enrollment and student demographics as well.

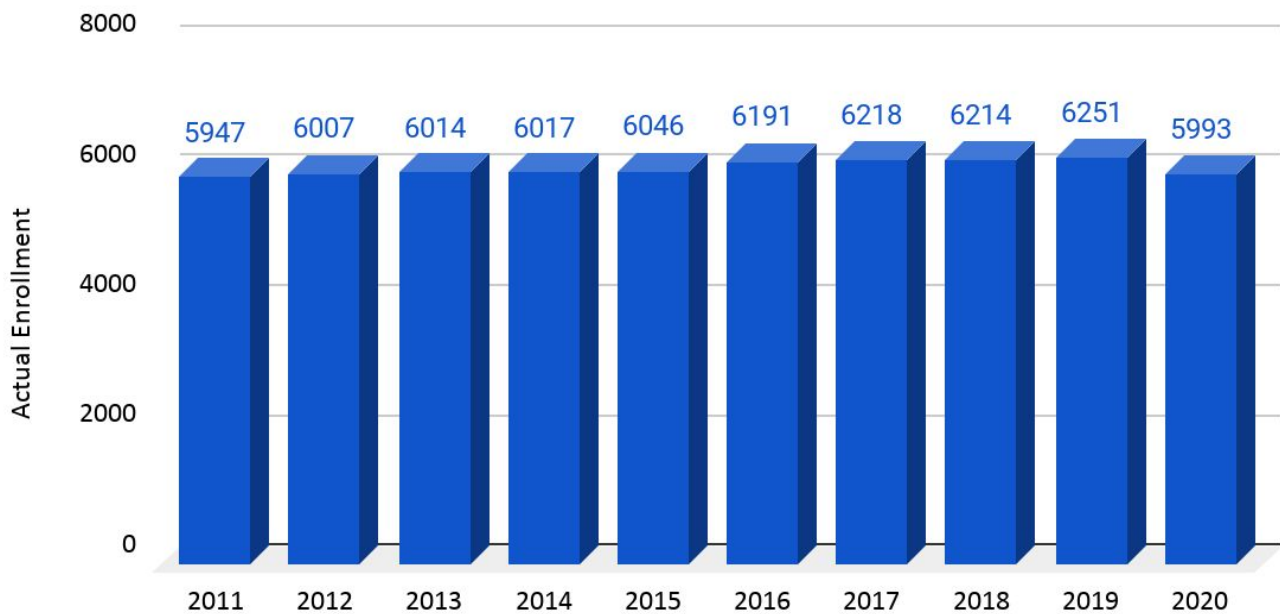
Local Budget and Capital Planning

On a local level, we use the October 1st enrollment historical data to make near term enrollment projections for class size purposes and staffing needs. When applying for a state-funded school project to the Massachusetts School Building Authority this same data, along with other factors, is used to make long-term enrollment projections to “right-size” building projects for the future.

In-District PreK-12 Actual Enrollment: 2011-2020

The chart below illustrates the district's enrollment for the past 10 school years. Please note that the drop in enrollment of 258 students overall for the district (-4.1%) for this year is an anomaly that is undoubtedly related to the pandemic. At the preschool level, there is a 102 student reduction as the district is not providing all remote programming for preschool and many families declined to participate in person. At kindergarten there is a 71 student reduction; anecdotally, districts across the state are seeing much lower enrollments in both preschool and kindergarten, with the assumption that many families are holding their students out of these non-mandatory grades to start them a year later in the hopes that school will be back to normal by then, rather than have them participate in a hybrid or remote program. Preschool and kindergarten reductions of 173 make up 67% of the overall district drop in enrollment; the other third includes some reductions here and there and the normal loss of students between Grade 8 and Grade 9 due to students leaving to attend vocational technical high school or private high schools.

PreK-12 Actual Enrollment 2011-2020 (as of October 1 of each year)



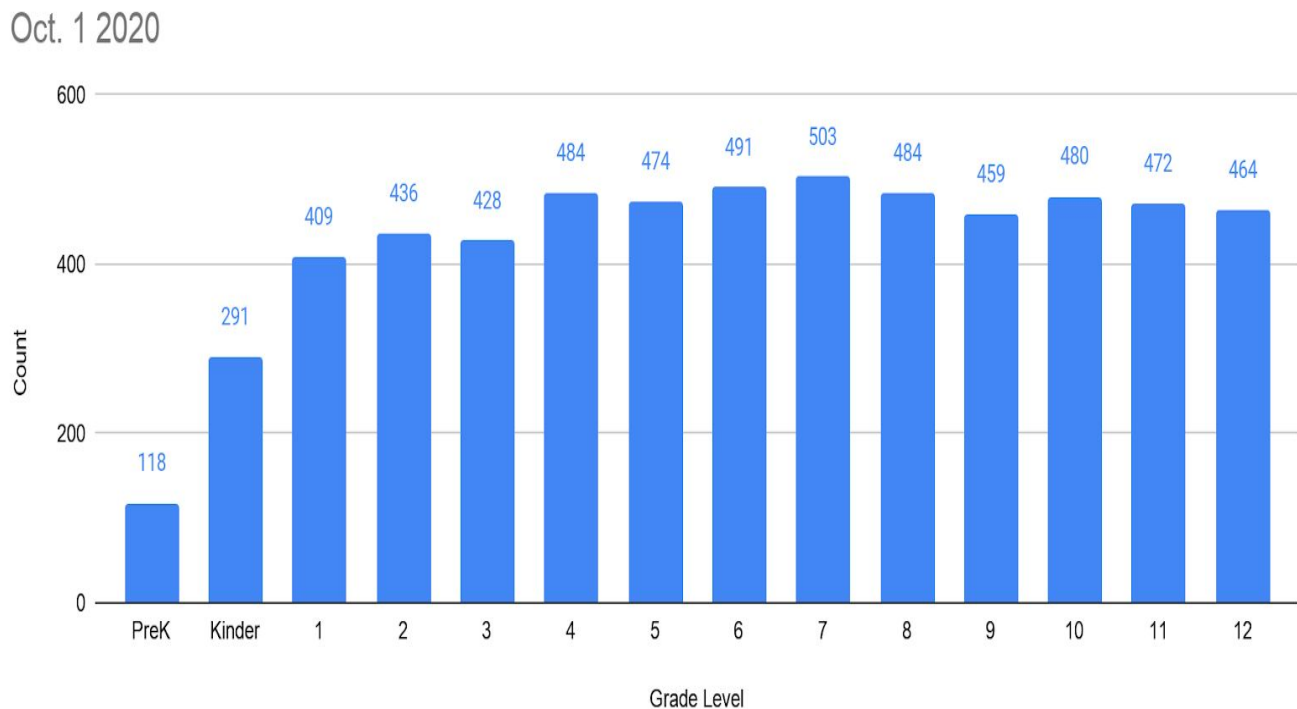
SHREWSBURY PUBLIC SCHOOLS

2019 ENROLLMENT BY GRADE

Enrollment by Grade October 1, 2020

The Department of Elementary and Secondary Education uses enrollment figures as of October 1 of each school year for its official statistics. The in-district populations for each grade in Shrewsbury as of October 1, 2020 are displayed in the chart below:

2020 PreK-12 Enrollment by Grade Level (October 1)



Enrollment History by Grade Level 2011-2020

Grade	2011	2012	2013	2014	2015	2016	2017	2018	2019	2020
PreK	243	262	250	234	238	232	237	243	220	118
K	341	364	392	346	356	388	355	351	362	291
1	429	416	399	430	424	418	424	424	426	409
2	457	447	450	430	446	459	437	447	439	436
3	464	474	452	462	439	460	476	454	470	428
4	516	458	480	467	474	462	482	494	455	484
5	485	524	462	487	473	487	464	490	493	474
6	476	465	518	469	500	490	502	468	502	491
7	462	473	490	529	481	511	493	511	478	503
8	443	466	471	478	547	492	516	495	514	484
9	414	408	420	432	413	513	451	460	470	459
10	414	421	406	423	440	428	513	447	469	480
11	413	417	421	410	412	441	429	501	452	472
12	390	412	403	420	403	410	439	429	501	464
Total P-12	5947	6007	6014	6017	6046	6191	6218	6214	6251	5993
% Annual Change	0.07%	1.01%	0.12%	0.05%	0.48%	2.41%	0.44%	-0.06%	0.61%	-4.31%

Special Education Out of District Placements

Grade	Pre	K	1	2	3	4	5	6	7	8	9	10	11	12	13*	Total
2016	0	0	0	1	1	1	1	1	4	3	5	9	9	12	22	69
2017	1	0	0	0	2	3	0	2	2	4	3	7	8	6	24	62
2018	1	0	0	0	1	2	4	1	2	1	5	4	5	8	17	51
2019	0	1	0	1	0	2	2	4	2	3	6	7	3	5	26	62
2020	0	0	1	0	2	1	1	3	3	3	6	5	4	4	30	63

*Grade 13 represents students requiring services until age 22.

Note: Some out of district placements are temporary, so totals fluctuate over the course of the year.

Vocational Technical School Enrollment

Grade	9	10	11	12	Total
2016	18	31	24	35	108
2017	28	19	28	22	97
2018	34	27	19	27	107
2019	25	34	26	18	103
2020	35	22	31	25	113

CLASS SIZE AVERAGES: HISTORY

Kindergarten Average Class Size (School Committee Guidelines 17-19)

*Yellow highlighted sections exceed guidelines by 1 or 2

*Red highlighted sections overenrolled by 3 or more

	Beal	Coolidge	Paton	Spring
2011	19	19	N/A	18
2012	20	19	N/A	21
2013	19	20	N/A	20
2014	19	20	20	20
2015	20	20	21	20
2016	19	20	20	20
2017	18	20	20	20
2018	16	22	22	21
2019	20	20	20	21
2020	16	15	12	15
Avg.	19	20	21	21

Middle School Average Class Sizes

(School Committee Guidelines Gr. 5-8 = 22-24)

*Yellow highlighted sections exceed guidelines by 1 or 2

*Red highlighted sections overenrolled by 3 or more

	Grade 5	Grade 6	Grade 7	Grade 8
2011	27	26	26	25
2012	29	29	30	29
2013	29	29	31	29
2014	24	23	26	24
2015	24	25	23	27
2016	24	25	26	25
2017	23	25	25	26
2018	25	23	26	25
2019	25	25	24	26
2020	26	25	24	26
Avg.	26	26	26	26

Elementary Class Size History (Grades 1-4)

*Yellow highlighted sections exceed guidelines by 1 or 2 *Red highlighted sections overenrolled by 3 or more

B=Beal; C=Coolidge; F=Floral P=Paton; S=Spring																	
	Grade 1 (SC 20-22)					Grade 2 (SC 20-22)				Grade 3 (SC 22-24)				Grade 4 (SC 22-24)			
	B	C	F	P	S	C	F	P	S	C	F	P	S	C	F	P	S
2011	22	17	22	21	20	22	24	23	22	21	23	22	21	25	24	26	25
2012	N/A	20	23	20	25	25	22	21	21	22	25	23	23	29	29	28	29
2013	N/A	19	20	19	22	26	30	21	28	27	25	29	21	24	25	24	24
2014	21	22	22	21	22	22	21	20	19	19	24	22	20	22	22	24	22
2015	19	23	21	20	19	21	22	23	22	22	21	20	21	19	24	23	22
2016	23	18	22	19	22	23	21	23	22	23	23	23	24	24	24	22	22
2017	18	22	22	20	18	18	24	20	19	24	24	22	25	24	24	24	25
2018	18	22	22	21	23	22	22	22	18	25	24	22	19	19	22	24	26
2019	22	22	24	20	19	23	20	23	19	23	23	22	26	18	24	22	20
2020	19	18	20	19	17	19	20	21	20	18	21	23	21	20	22	20	21
AVG	21	21	22	20	21	22	23	22	21	23	24	23	22	23	24	24	24

Year-to-Year Progression Grade 1 to Grade 12

	1	2	3	4	5	6	7	8	9	10	11	12	Gr. 1-12 % Change
Class of 2021	2009	2010	2011	2012	2013	2014	2015	2016	2017	2018	2019	2020	
Enrollment	426	448	464	458	462	462	480	492	451	447	452	464	8.92%
Class of 2020	2008	2009	2010	2011	2012	2013	2014	2015	2016	2017	2018	2019	
Enrollment	479	493	515	516	524	518	529	547	513	513	501	501	4.59%
Class of 2019	2007	2008	2009	2010	2011	2012	2013	2014	2015	2016	2017	2018	
Enrollment	439	456	465	472	485	465	490	478	413	428	429	429	-2.28%
Class of 2018	2006	2007	2008	2009	2010	2011	2012	2013	2014	2015	2016	2017	
Enrollment	440	454	459	459	469	476	474	471	432	441	441	439	-0.23%
Class of 2017	2005	2006	2007	2008	2009	2010	2011	2012	2013	2014	2015	2016	
Enrollment	452	468	482	478	473	465	462	466	420	423	412	410	-9.3%
Class of 2016	2004	2005	2006	2007	2008	2009	2010	2011	2012	2013	2014	2015	
Enrollment	449	466	452	454	456	436	435	443	408	406	410	403	-10.8%
Class of 2015	2003	2004	2005	2006	2007	2008	2009	2010	2011	2012	2013	2014	
Enrollment	484	489	502	507	496	461	466	479	414	421	421	420	-13.2%
Class of 2014	2002	2003	2004	2005	2006	2007	2008	2009	2010	2011	2012	2013	
Enrollment	442	464	464	466	462	450	453	439	401	414	417	403	-8.8%
Class of 2013	2001	2002	2003	2004	2005	2006	2007	2008	2009	2010	2011	2012	
Enrollment	475	483	480	504	502	488	485	489	421	417	413	412	-13.3%
Class of 2012	2000	2001	2002	2003	2004	2005	2006	2007	2008	2009	2010	2011	
Enrollment	420	444	442	464	463	461	449	449	393	398	390	390	-7.1%
Class of 2011	1999	2000	2001	2002	2003	2004	2005	2006	2007	2008	2009	2010	
Enrollment	466	471	469	488	494	492	486	501	419	429	415	413	-11.4%
Class of 2010	1998	1999	2000	2001	2002	2003	2004	2005	2006	2007	2008	2009	
Enrollment	381	395	402	424	428	436	444	443	408	404	390	390	2.4%
Class of 2009	1997	1998	1999	2000	2001	2002	2003	2004	2005	2006	2007	2008	
Enrollment	365	365	391	399	419	423	438	441	425	436	423	427	17.0%
Class of 2008	1996	1997	1998	1999	2000	2001	2002	2003	2004	2005	2006	2007	
Enrollment	381	400	408	424	433	427	426	437	413	402	388	383	0.5%

Kindergarten Enrollment Numbers: Full Day/Half Day

Total Kindergarten		Full Day			Half Day		
Year	Enrollment	Sections	Students	Percentage	Sections	Students	Percentage
2006	378	3	57	15%	17	321	85%
2007	376	4	80	21%	17	296	79%
2008	342	4	77	23%	14	265	77%
2009	348	5	96	28%	13	252	72%
2010	372	8	166	45%	10	206	55%
2011	341	8	158	46%	10	183	54%
2012	364	15	307	84%	3	57	16%
2013	392	15	318	81%	4	74	19%
2014	346	12	242	70%	6	104	30%
2015	356	12	240	67%	6	116	33%
2016	388	14	275	71%	6	113	29%
2017	355	11	216	61%	8	139	39%
2018	351	10	208	59%	10	143	41%
2019	362	13	252	70%	6	110	30%
2020	291	19	291	100%	0	0	0

Students Transferring to Private for Grade 9

	09/10	10/11	11/12	12/13	13/14	14/15	15/16	16/17	17/18	18/19	19/20	20/21
Bancroft	1			1	10					3	4	2
Boston Latin	2											
Cambridge School										1		
Catholic Memorial	1											
Cushing Academy								1	1			
East Catholic								1				
Gann Academy		1										
Groton School						1	1		1			
Hillside								1			1	
Holy Name				1	4			1	2		1	
Marionapolis											1	
Milton Academy								1				
Noble & Greenough										1		
Notre Dame	5	3	3	6	12	3	4	1	1	1		
Phillips Academy												
St. John's	42	34	35	33	47	46	47	35	35	35	26	25
St. Mark's		2		2		2	2	1	1	1		1
St. Paul's												3
St. Peter-Marian		2	1		2	2	2	2	1	1	3	
The Rivers		1										
Whitinsville Christian Academy		1	1									
Utah							1					
Westford Academy												1
Worcester Academy	2			1		1	1	3	6	4		6
Totals	53	44	40	44	76	55	58	47	48	47	36	38

Totals by Schools	
	10/1/20
PRESCHOOL	118
BEAL	255
COOLIDGE	432
FLORAL	678
PATON	351
SPRING	332
SHERWOOD	965
OAK MIDDLE	987
HIGH SCHOOL	1875
TOTAL ENROLLMENT	5993
Total Out of District Special Education	63
Total Vocational High School	113
Total Walk Ins	52
TOTAL	228
Totals by Grade	
Preschool	118
Kindergarten	291
Grade 1	409
Grade 2	436
Grade 3	428
Grade 4	484
Elem. Subtotal	2166
Grade 5	474
Grade 6	491
Grade 7	503
Grade 8	484
Middle Subtotal	1952
Grade 9	459
Grade 10	480
Grade 11	472
Grade 12	464
HS Subtotal	1875
Grand Total	5993

Cohorts by School (based on Oct 30th enrollment)

School	A1 (4.5)	A2 (4)	B (M,T)	C (R,F)	D (Remote)
Shrewsbury High School	10	18	780	797	270
Oak Middle School	9	21	325	305	325
Sherwood Middle School	15	26	286	294	344
Calvin Coolidge School	7	30	109	111	176
Walter J. Paton School	10	22	113	114	92
Spring Street School	6	12	114	114	87
Floral Street School	6	23	155	142	362
Beal Early Childhood Center	9	12	43	51	141
Parker Road Preschool	20	67	7	4	20
Totals	92	231	1932	1932	1817

--	--	--	--	--	--

Cohort by Grade Level					
-----------------------	--	--	--	--	--

Cohort by grade level	A1 (4.5)	A2 (4)	B (M,T)	C (R,F)	D (Remote)
PreK	20	67	7	4	20
K	7	17	70	77	123
1	11	18	103	96	181
2	6	24	121	113	173
3	7	21	113	110	183
4	7	19	127	136	198
5	7	11	144	147	164
6	8	15	142	147	180
7	3	12	170	144	174
8	6	9	155	161	151
9	4	4	182	211	58
10	4	6	215	187	69
11	0	5	193	197	77
12	2	3	190	202	66
Totals	92	231	1932	1932	1817



**SHREWSBURY PUBLIC SCHOOLS
SCHOOL COMMITTEE MEETING**

ITEM NO: **V. Curriculum**

MEETING DATE: **11/04/20**

BACKGROUND INFORMATION:

ACTION RECOMMENDED:

STAFF & STUDENTS AVAILABLE FOR PRESENTATION:



**SHREWSBURY PUBLIC SCHOOLS
SCHOOL COMMITTEE MEETING**

ITEM NO: **VI. Policy**

MEETING DATE: **11/04/20**

BACKGROUND INFORMATION:

ACTION RECOMMENDED:

COMMITTEE MEMBERS/STAFF AVAILABLE FOR PRESENTATION:



SHREWSBURY PUBLIC SCHOOLS SCHOOL COMMITTEE MEETING

ITEM NO: **VII. Finance & Operations**

MEETING DATE: **11/04/20**

A. Redistricting of Elementary Attendance Zones: Update on Process

BACKGROUND INFORMATION:

The new Major Howard W. Beal School will open for students in grades K-4 in the fall of 2021, which will require redistricting of elementary school attendance zones at Shrewsbury Public Schools. In September 2019, the Committee voted to establish an ad hoc committee on redistricting, noting that the ad hoc committee would be provided with guiding principles by the School Committee to apply when considering information, reviewing options, and making recommendations for the redistricting of elementary school attendance zone boundaries to take effect when the new Beal School opens. Recommended Guiding Principles were subsequently presented by Dr. Sawyer and Mr. Collins, and the Committee voted to adopt them in October 2019.

The Redistricting Committee had their most recent meeting in October after a hiatus due to the pandemic. Tonight's update will include information on project goals and objectives, redistricting and demographics workflow, timelines, project progress, and the upcoming meeting schedule.

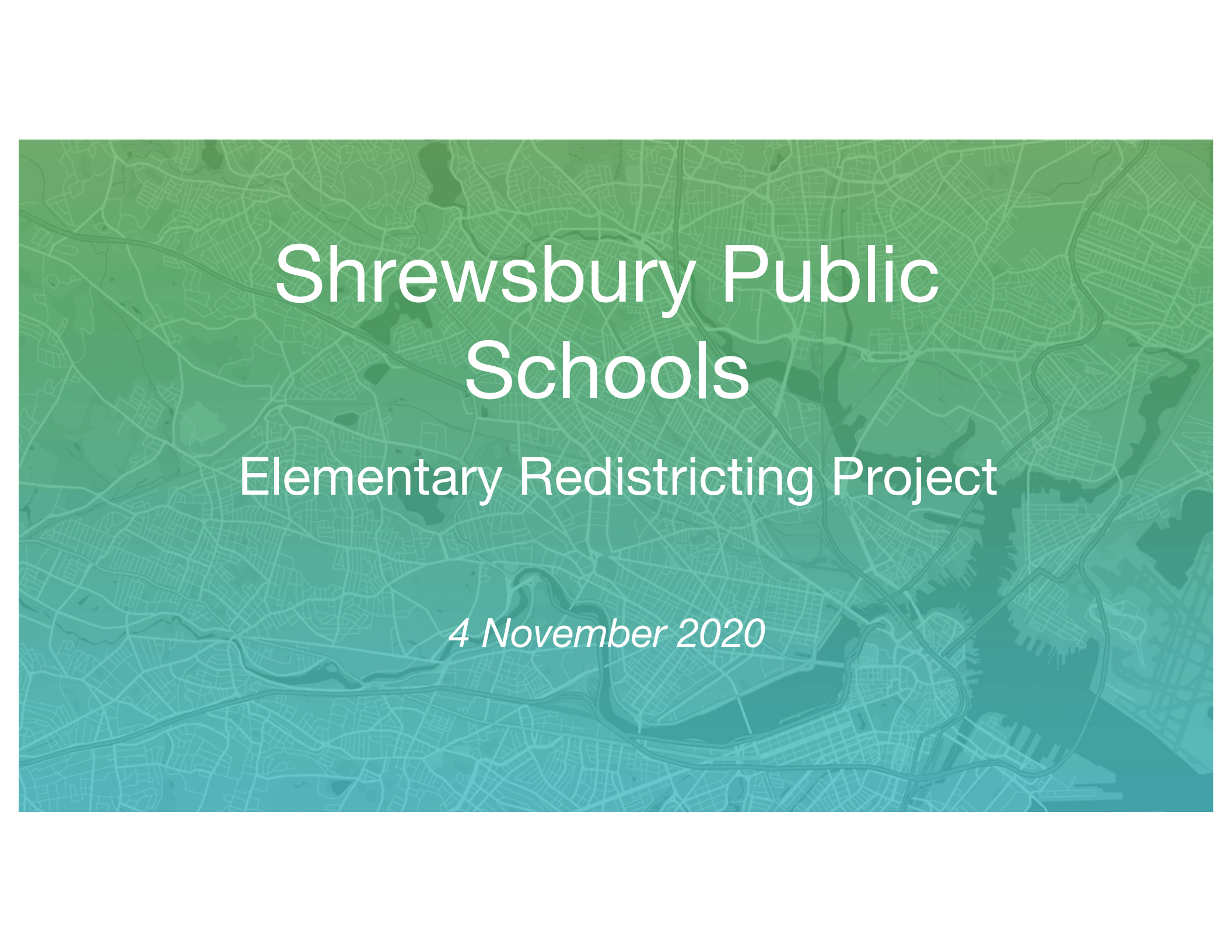
ACTION RECOMMENDED:

That the School Committee hear the report and take such action as it deems in the best interest of the school system.

STAFF AVAILABLE FOR PRESENTATION:

Dr. Joseph M. Sawyer, Superintendent of Schools

Mr. Patrick Collins, Assistant Superintendent for Finance & Operations



Shrewsbury Public Schools

Elementary Redistricting Project

4 November 2020

Redistricting Committee

- Sandra Fryc, School Committee
- Jon Wensky, School Committee
- Joseph Sawyer, Superintendent of Schools
- Patrick Collins, Asst. Superintendent for Finance and Operations
- Tiffany Ostrander, Principal, Calvin Coolidge School
- Bryan Mabie, Principal, Spring Street School
- Nicole Grace, Parent, Spring Street School
- Shannon Creedon, Parent, Walter J. Paton School
- Rajesh Velagapudi, Parent, Floral Street School
- Christine Jasinski, Parent, Calvin Coolidge School
- Terrick Andey, Parent, Beal Early Childhood Center

Topics Covered Today



Project Goals & Objectives



Quick Review of Redistricting & Demographics Workflow



Initial Timeline



Updated Timeline



Project Progress



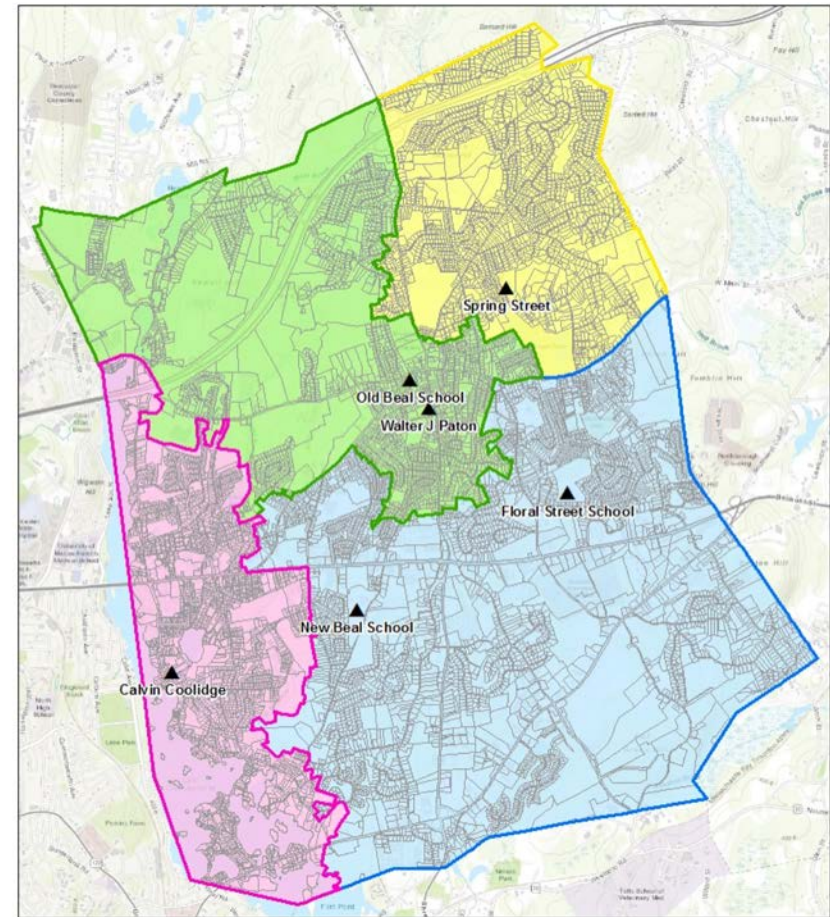
Upcoming Meeting Schedule



Most of these slides were provided by our redistricting consultant AppGeo.

Project Goals & Objectives

- Beal Early Childhood Center being replaced by a new 790 seat K-4 elementary school
- Realign all elementary schools into K-4 configuration
- Create scenarios to reduce **enrollment** at all elementary schools to relieve overcrowding and move students to new Beal School
- Develop and use district projections to evaluate and adjust scenarios



Redistricting Analysis Workflow

1 : Data gathering and processing mapping current student locations and getting an understanding of the problem to solve

2 : Identifying discrete areas that become components or the building blocks for scenarios

3 : Collaboratively building scenarios and evaluating scenarios against district considerations

4 : Presenting information in the form of maps, charts and graphics to staff and community

Demographic Analysis Workflow

1 : Compute demographic projections using wide variety of available data

2 : Analyze fertility and migration patterns to develop cohort-component model for projecting population by five-year age group

3 : Produce report of demographic analysis and provide grade level projection figures by district for redistricting analyses

4 : Apply projection figures to scenarios developed in the redistricting workflow and evaluate and adjust scenarios

This work is being done by a demographer under contract with AppGeo.

Considerations

Ensure educational needs are met.

Meet needs regardless of assignment.

Emphasize “neighborhood school” approach.

Prioritize walkability and maintain natural boundaries.

Ensure availability of dedicated instructional spaces.

Including art, music, ELL, special ed etc.

Consider student demographics.

School populations should reflect town diversity

Account for future development/growth in the plan.

Identify potential new developments and include population projections.

Minimize change.

Minimize changes to school assignments for existing students.

Initial Timeline

MARCH - APRIL 2020

Data Gathering &
Background Analyses

MAY - AUGUST

Demographic
Analysis & Population
Projections

OCTOBER - NOVEMBER

Present initial proposed
scenarios to School Committee
& Community via Public Forums

APRIL - JUNE

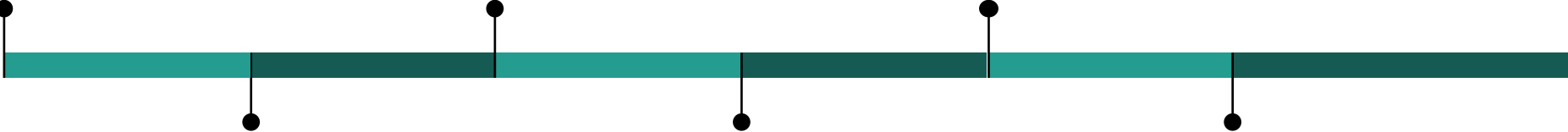
Build Review &
Revise Scenarios

**AUGUST -
SEPTEMBER**

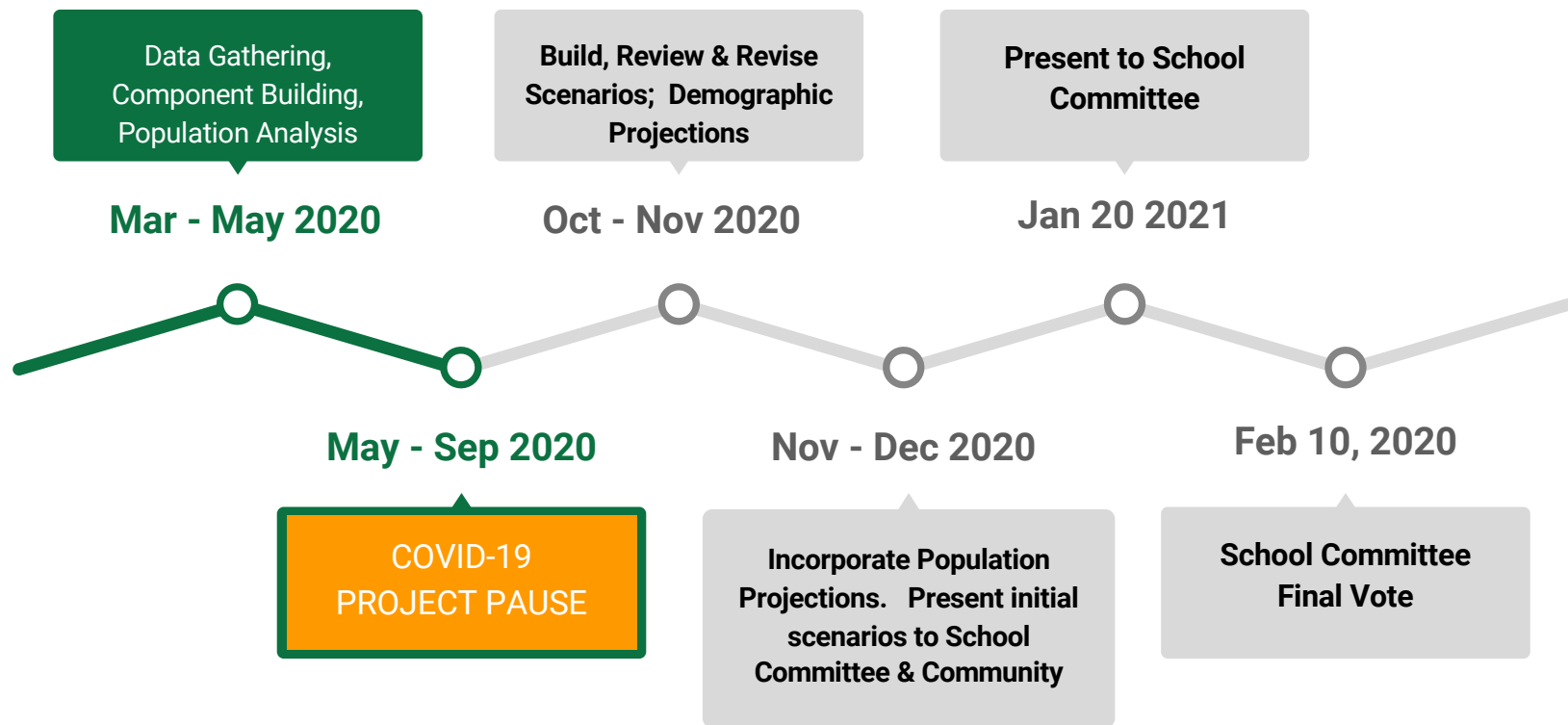
Incorporate Population
Projections into
Scenarios

DECEMBER 2020

Incorporate feedback
and finalize scenarios
for School Committee
Vote

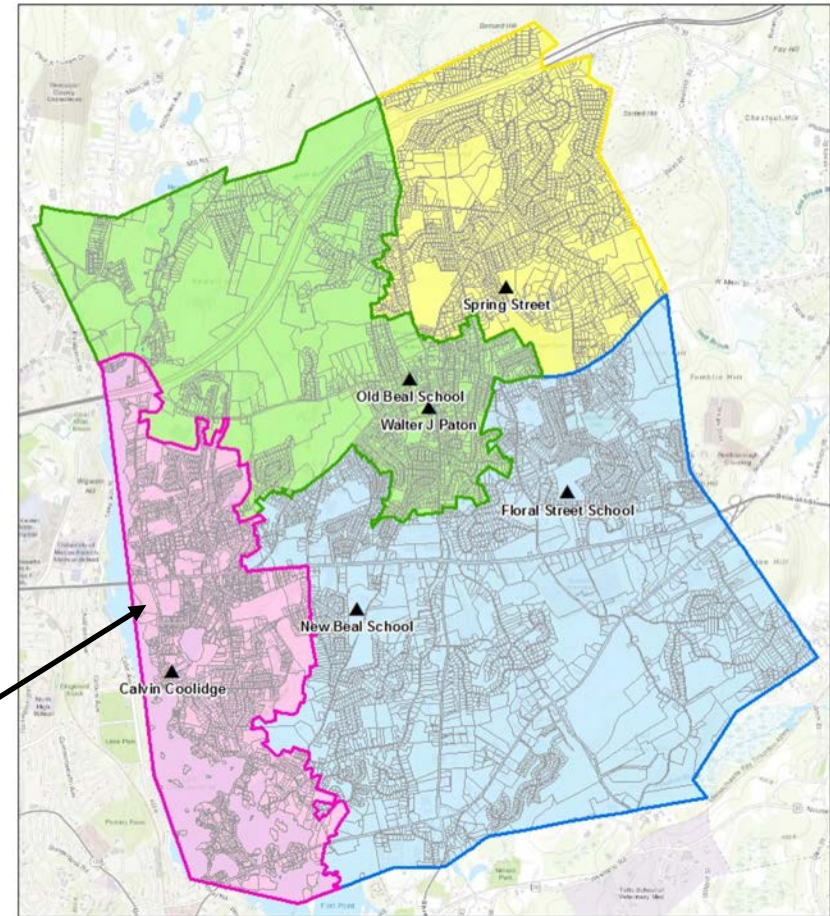


Updated Timeline



Project Progress

- Initial data collection completed though missing development information
- Started and completed component creation
- Cohort-component model complete, report and projections in progress
- Current elementary school zones



Next Steps



AppGeo to build several scenarios



Schedule meetings for scenario evaluation



Incorporate projection data into scenarios

Upcoming Meeting Schedule

October

10/27 Re-start Redistricting Committee work w/ AppGeo [**Completed**]

November

11/4 **School Committee** update on progress

11/10 **Redistricting Committee** look at preliminary options—input/potential revise

11/17 **Redistricting Committee** look at preliminary options—input/potential revise

Upcoming Meeting Schedule

December

12/1 Redistricting Committee hold a virtual community forum on rationale, process, schedule, initial options [record this event and post so others who missed can watch later]

12/8 Redistricting Committee meeting w/ AppGeo to review/refine options develop pros/cons weighting of each option

12/16 Joint Redistricting Committee and School Committee agenda “Hold Date” for demographer presentation

January

1/6 School Committee update on options

1/12 Community forum to look at refined options—seek feedback

1/13 Redistricting Committee finalize pros/cons weighting of each option—show 2-3 options

1/20 Redistricting Committee final recommendation to School Committee

1/27 School Committee public hearing

Upcoming Meeting Schedule

February

2/10 School Committee vote final plan

March-June

Communicate plan

August [2021-2022 school year]

Execute plan



Questions



**SHREWSBURY PUBLIC SCHOOLS
SCHOOL COMMITTEE MEETING**

ITEM NO: **VII. Finance & Operations**

MEETING DATE: **11/04/20**

B. Fiscal Year 2022 Budget Calendar: Vote

BACKGROUND INFORMATION:

Mr. Collins will present a Fiscal Year 2022 Budget Calendar (enclosed). This calendar was reviewed by the Finance Subcommittee on October 30 and is being forwarded for the full Committee's consideration and approval.

ACTION RECOMMENDED:

That the Committee vote to approve the Fiscal Year 2022 Budget Calendar as presented.

STAFF AVAILABLE FOR PRESENTATION:

Mr. Patrick Collins, Assistant Superintendent for Finance & Operations

FY22 BUDGET CALENDAR-DRAFT: OCTOBER 2020

Date	Event/Action
11/4/2020	Discuss and Vote Initial FY22 Budget Calendar.
November 2020	Review Budget Development Timeline with SLT, DLT, School Councils
November 2020	Administration begins development of Level-Services Budget with known/estimated cost forecasting.
11/18/2020	Discussion: School Committee FY22 Budget Priorities and Guidelines
12/2/2020	Vote School Committee Guidelines and Fiscal Policies
12/16/2020	School Committee Budget Workshop #1 [<i>6pm before Regular Session</i>]
1/13/2021	School Committee Budget Workshop #2
1/27/2021	Governor Baker Releases his State Budget Plan. State aid figures for Shrewsbury included.
February 2021	Presentation of Superintendent's Budget Recommendation
February 2021	Town Manager Releases Initial Town-wide Budget Recommendation
February 2021	Special Education Budget Presentation
March 2021	FY22 Budget Topics include: -Curriculum & Instruction Budget Presentation -Technology Budget Presentation -Public Hearing
March 2021	Finance Committee Hearing [Saturday morning]
3/10/2021	Vote on full-day kindergarten, preschool tuitions and school fees
April 14, 2021	School Committee Budget Workshop #3, if needed
Mid April 2021	House Ways & Means Committee budget released. Updated state aid figures to Shrewsbury.
Mid-late April	Town Manager: Fiscal Projection #2
Late April 2021	Superintendent's Final Recommendation and School Committee Vote FY22 Budget Recommendation for Town Meeting
Late April 2021	Board of Selectmen Vote on FY22 Budget
Late April 2021	Finance Committee Public Hearing and Vote on ATM Warrant Articles and Operating Budget
5/13/2021	Pre-Town Meeting
May 17 & 19, 2021	Annual Town Meeting
July	State Legislature Finalizes State Budget-Final State Aid Figures Determined. Adjust budget plans as necessary.



**SHREWSBURY PUBLIC SCHOOLS
SCHOOL COMMITTEE MEETING**

ITEM NO: **VIII. Old Business**

MEETING DATE: **11/04/20**

BACKGROUND INFORMATION:

ACTION RECOMMENDED:

MEMBERS/STAFF AVAILABLE FOR PRESENTATION:



**SHREWSBURY PUBLIC SCHOOLS
SCHOOL COMMITTEE MEETING**

ITEM NO: **IX. New Business**

MEETING DATE: **11/04/20**

BACKGROUND INFORMATION:

ACTION RECOMMENDED:

STAFF AVAILABLE FOR PRESENTATION:



**SHREWSBURY PUBLIC SCHOOLS
SCHOOL COMMITTEE MEETING**

ITEM NO: **X. Approval of Minutes**

MEETING DATE: **11/04/20**

BACKGROUND INFORMATION:

The minutes from the School Committee Meeting held on October 28, 2020 are enclosed.

ACTION RECOMMENDED:

That the Committee accept the minutes from the School Committee Meeting held on October 28, 2020.

STAFF AVAILABLE FOR PRESENTATION:

Ms. Sandra Fryc, Chairperson

Dr. B. Dale Magee, Secretary

**SHREWSBURY PUBLIC SCHOOLS
100 MAPLE AVENUE
SHREWSBURY, MASSACHUSETTS**

MINUTES OF SCHOOL COMMITTEE MEETING

Wednesday, October 28, 2020

Present via virtual participation: Ms. Sandy Fryc, Chairperson; Mr. Jon Wensky, Vice Chairperson; Dr. B. Dale Magee, Secretary; Ms. Lynsey Heffernan; Mr. Jason Palitsch; and Dr. Joseph Sawyer, Superintendent of Schools.

Due to the Coronavirus (COVID-19) pandemic, this meeting was not open to physical attendance by the public, but was broadcast live on SELCO Channels 30 & 330 and streamed live on the Shrewsbury Media Connection website.

A complete audio/visual recording of this meeting is available on the Shrewsbury Public Schools website.

The meeting was convened by Ms. Fryc at 7:00 pm.

I. Public Participation

None.

II. Chairperson's Report & Members' Reports

Ms. Fryc reported she attended Beal Building Committee and Redistricting Committee meetings the prior evening, and that the Beal project remains on plan and under budget.

III. Superintendent's Report

Dr. Sawyer reported that the Redistricting Committee met the prior evening; congratulated Shrewsbury High School (SHS) Athletic Trainer Walter Hildebrand on being named the District E Athletic Trainer of the Year; advised a Community Walk and Vigil for Mental Health would be held virtually at the weekend; and noted that with snow in the short-term forecast, the district has the option to decide locally to have remote learning days in lieu of snow days when weather is inclement.

IV. Time Scheduled Appointments:

A. Update on Reopening of the 2020-2021 School Year: Report

Dr. Sawyer began the update with a summary of key messages, reasons to be proud, and COVID-19 mitigation strategies; and provided information on COVID cases in the district (stressing that there remains no evidence of transmission in schools), current local and state public health data, medical literature on in-school transmission risk, and updates to decision-making relative to making changes to the educational program. Director of Nursing Noelle Freeman presented information on the Phase I Abbott BinaxNOW Rapid Point of

Care COVID-19 testing program available for use by interested K-12 schools, and noted items for consideration by Shrewsbury Public Schools to determine if the program would be beneficial to the district.

B. Recent Medical Science on COVID-19 & Schools: Report & Discussion

Dr. Sawyer introduced Andrea Ciaranello, MD, MPH, Infectious Disease Physician at Massachusetts General Hospital and Assistant Professor of Medicine at Harvard Medical School. Dr. Ciaranello's report on K-grade 12 schools and COVID-19 included information on key considerations relative to students, educators, and equity; mitigation strategies; data collected so far in Fall 2020 from K- grade 12 schools domestically and internationally; Children's Hospital of Philadelphia (CHOP) Policy Lab findings; variance in community rate thresholds for remote learning; types of testing for symptomatic and asymptomatic individuals; and screening of asymptomatic students and staff.

Committee members asked clarifying questions on Department of Elementary and Secondary Education (DESE) and Department of Public Health (DPH) COVID-19 data reporting relative to public and private schools, and to remote learning; information flow between schools, DESE, and DPH; the relationship between community transmission and educational program choice; testing and potential participation in the BinaxNOW study; and low in-school transmission relative to students attending school in person (where Dr. Ciaranello indicated she is comfortable with updated state guidance to continue in-person school even when a community is rated "red" by the Department of Public Health, as long as mitigation strategies remain in place and contact tracing is done).

V. Curriculum

None.

VI. Policy

None.

VII. Finance & Operations

None.

VIII. Old Business

None.

IX. New Business

None.

X. Approval of Minutes

Without objections from the Committee, the minutes from the School Committee Meeting held on October 21, 2020 were accepted as distributed.

XI. Executive Session

Ms. Fryc requested a motion to adjourn to Executive Session:

A. for the purpose of addressing G.L. c. 30A, § 21(a)(7) “[t]o comply with, or act under the authority of, any general or special law or federal grant-in-aid requirements” (“Purpose 7”), Open Meeting Law, G.L. c. 30A, §§ 22(f), (g) – for the purpose of reviewing, approving, and/or releasing executive session minutes; and

B. for the purpose of addressing G.L. c. 30A, § 21(a)(3) “to discuss strategy with respect to collective bargaining or litigation if an open meeting may have a detrimental effect of the bargaining or litigating position of the public body and the chair so declares” (“Purpose 3”) - the Shrewsbury Education Association Unit A; Shrewsbury Education Association Unit B; the Shrewsbury Paraprofessional Association; and/or the Shrewsbury Cafeteria Workers.

On a motion by Mr. Palitsch, seconded by Dr. Magee, on a roll call vote: Dr. Magee, yes; Mr. Palitsch, yes; Mr. Wensky, yes; Ms. Heffernan, yes; and Ms. Fryc, yes, the School Committee voted to adjourn to executive session at 8:15 pm.

XII. Adjournment

On a motion by Ms. Heffernan, seconded by Mr. Wensky, the committee unanimously agreed to adjourn the meeting at 8:40 pm. Roll call votes were as follows: Ms. Fryc, yes; Ms. Heffernan, yes; Mr. Palitsch, yes; Dr. Magee, yes; and Mr. Wensky, yes.

Respectfully submitted,

Elizabeth McCollum, Clerk

Documents referenced:

1. 2020-21 School Year Reopening Update Slide Presentation
2. Medical Science on Schools and COVID-19 Slide Presentation
3. Set(s) of minutes as referenced above



SHREWSBURY PUBLIC SCHOOLS SCHOOL COMMITTEE MEETING

ITEM NO: **XI. Executive Session**

MEETING DATE: **11/04/20**

- A. For the purpose of addressing G.L. c. 30A, § 21(a)(7) “[t]o comply with, or act under the authority of, any general or special law or federal grant-in-aid requirements” (“Purpose 7”), Open Meeting Law, G.L. c. 30A, §§ 22(f), (g) – for the purpose of reviewing, approving, and/or releasing executive session minutes.**
- B. For the purpose of addressing G.L. c. 30A, § 21(a)(3) “to discuss strategy with respect to collective bargaining or litigation if an open meeting may have a detrimental effect of the bargaining or litigating position of the public body and the chair so declares” (“Purpose 3”) - the Shrewsbury Education Association Unit A; Shrewsbury Education Association Unit B; the Shrewsbury Paraprofessional Association; and/or the Shrewsbury Cafeteria Workers.**

BACKGROUND INFORMATION:

Executive session is warranted for these purposes.

ACTION RECOMMENDED:

That the School Committee enter into executive session:

- A. for the purpose of addressing G.L. c. 30A, § 21(a)(7) “[t]o comply with, or act under the authority of, any general or special law or federal grant-in-aid requirements” (“Purpose 7”), Open Meeting Law, G.L. c. 30A, §§ 22(f), (g) – for the purpose of reviewing, approving, and/or releasing executive session minutes; and
- B. for the purpose of addressing G.L. c. 30A, § 21(a)(3) “to discuss strategy with respect to collective bargaining or litigation if an open meeting may have a detrimental effect of the bargaining or litigating position of the public body and the chair so declares” (“Purpose 3”) - the Shrewsbury Education Association Unit A; Shrewsbury Education Association Unit B; the Shrewsbury Paraprofessional Association; and/or the Shrewsbury Cafeteria Workers, where deliberation in an open meeting may have a detrimental effect on the bargaining position of the public body; and return to Open Session only for the purpose of adjourning for the evening.

STAFF AVAILABLE FOR PRESENTATION:

Dr. Joseph M. Sawyer, Superintendent of Schools
Ms. Barbara A. Malone, Executive Director of Human Resources
Mr. Patrick C. Collins, Assistant Superintendent for Finance and Operations



**SHREWSBURY PUBLIC SCHOOLS
SCHOOL COMMITTEE MEETING**

ITEM NO: **XII. Adjournment**