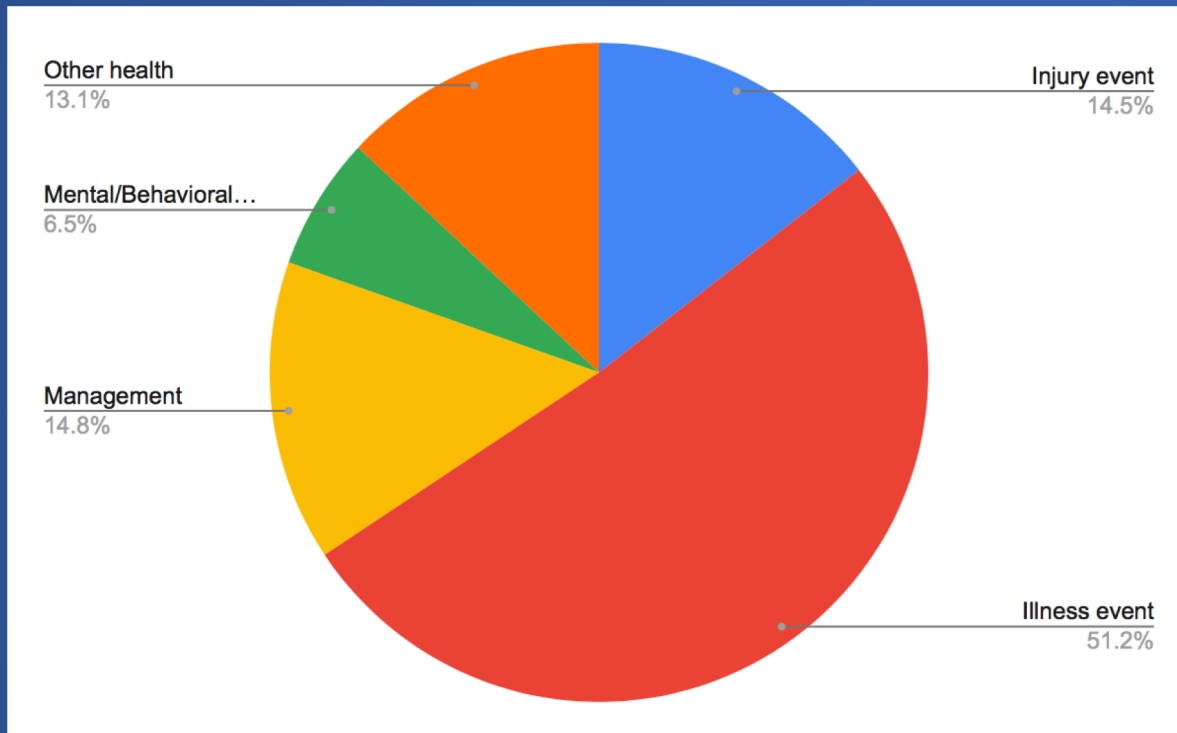


**Department of Nursing  
Report to School  
Committee  
October 30, 2019**

# Student Visits to the Health Office



**Illness Event = 52%**

**Injury Event = 15%**

**Management = 14%**

**Other Health = 13%**

**Mental/Behavioral health = 6%**

**2018-19 TOTAL STUDENT VISITS = 64, 623**

**Return to class rate = 94%**







# SBIRT Screenings

Screening, Brief Intervention, Referral to Treatment

Grade level	# students screened	# parent opt outs	# positive screenings*	# referrals for follow up
7	478	29	5	0
10	421	5	70	1

\* a screen is considered “positive” if a student responds with anything other than no use of substances



*Thank you to the school adjustment counselors, guidance counselors and school psychologists who performed the SBIRT screens at OMS and SHS!! 😊*

# Comprehensive School Health Services Grant

- Massachusetts Department of Public Health

“All the evidence points to the fact that children can’t learn if they are not healthy. This funding will support our efforts to keep students healthy, in school, and prepared to learn.”

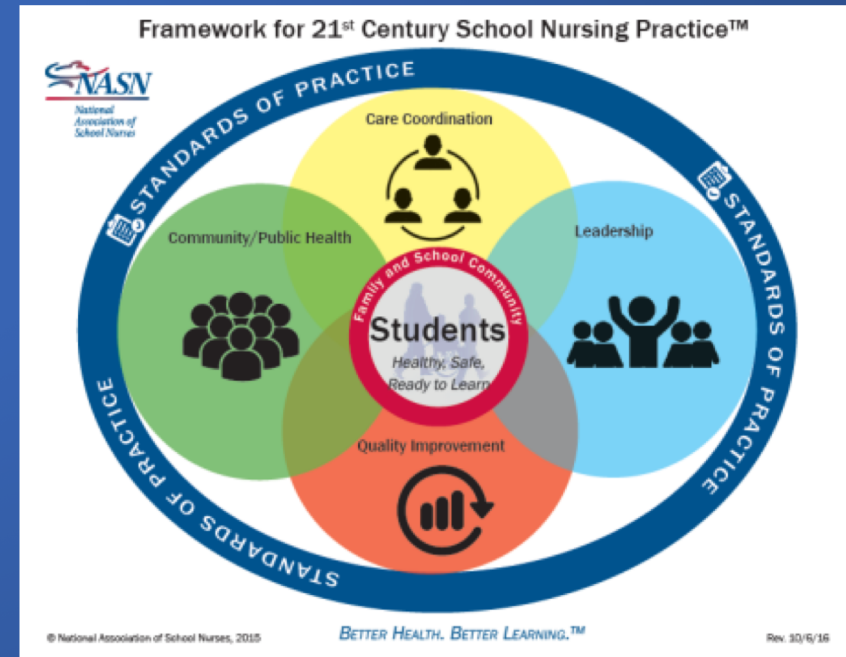
Mary Lou Sudders, Health and Human Services Secretary

- \$100,000 per year for up to 10 years

- Transitions* “bridge” program at Sherwood Middle School

- Equity audit

- Professional development



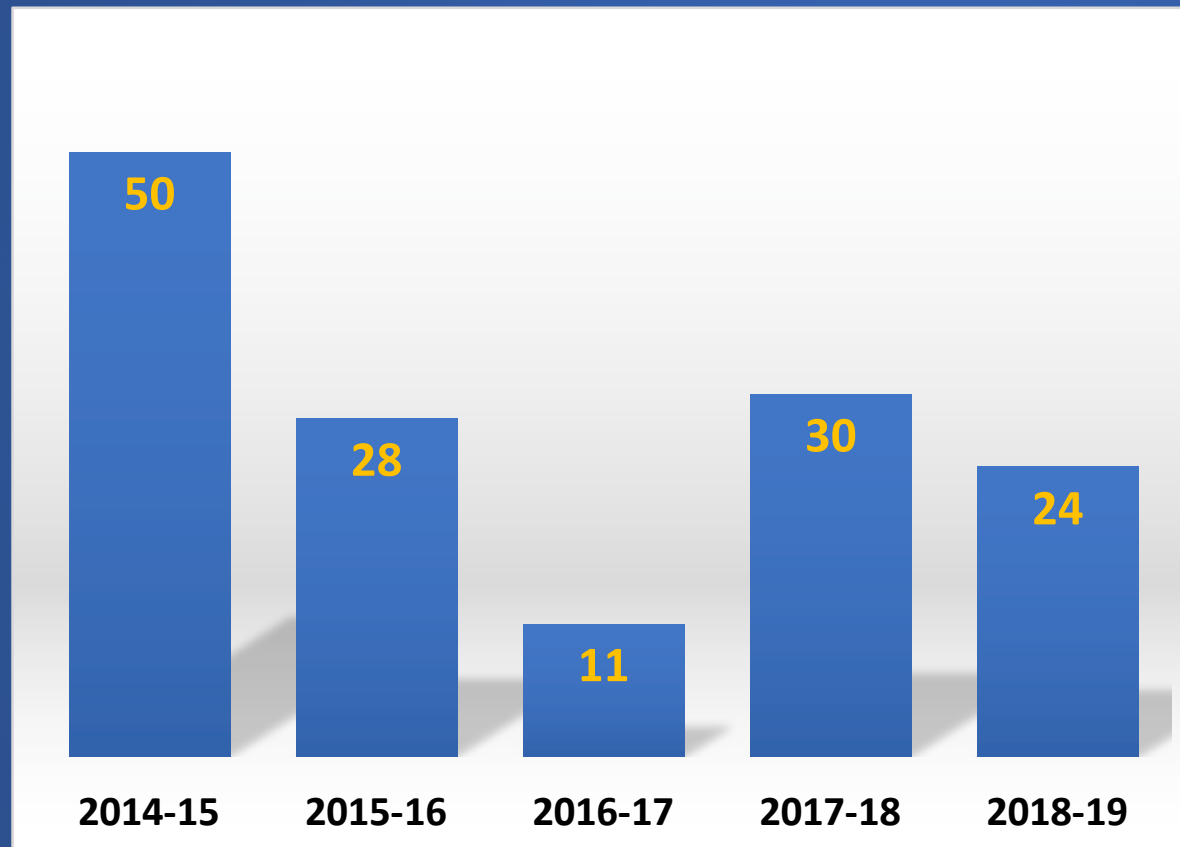
# Concussions

SHS Athletes	OMS Athletes	District Wide - Concussions occurring during the school day (not including injuries sustained during athletics)	District Wide - concussions occurring during outside of school activities
24	0	18	58





# Student Athlete Concussion Data



BEING A  
**Nurse**  
MEANS

**YOU WILL NEVER BE BORED,**

*You will always be frustrated.*

*You will be surrounded  
by challenges, SO MUCH*

**YOU WILL CARRY (TO DO AND SO  
IMMENSE LITTLE TIME.  
RESPONSIBILITY**

*and very, little authority.*

*You will step into people's lives and will make a difference.*

*SOME WILL BLESS YOU, SOME WILL CURSE YOU.*

*YOU WILL SEE PEOPLE AT THEIR WORST AND AT THEIR BEST.*

**YOU WILL** *to be amazed at people's capacity*  
*never cease* **For LOVE, COURAGE**  
**and ENDURANCE.**

**YOU WILL SEE LIFE BEGIN AND END**

*YOU WILL SEE RESOUNDING TRIUMPHS AND DEVASTATING FAILURES.*

**YOU WILL CRY A LOT,** *You will*

**YOU WILL KNOW** *LAUGH*

**WHAT IT IS TO BE** *a lot*

**HUMAN AND HUMANE.**

Thank you!

Questions?