



School Reopening Update

September 9, 2020



Key Messages

- 1) The health & well-being of students, families, & staff is priority #1.
- 2) Our focus for the coming year is to develop a safe school environment for our students and staff that prioritizes everyone's well-being and enables high levels of learning for all.
- 3) We are planning based on guidance from the MA Department of Elementary & Secondary Education while closely monitoring the latest information from medical experts and the evolving data regarding the pandemic both in Massachusetts and in Shrewsbury.



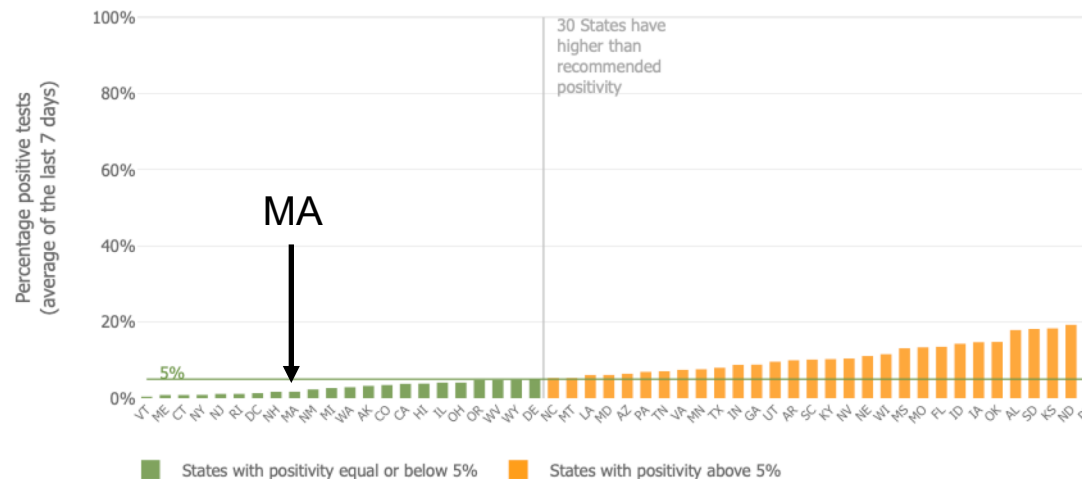
Current Public Health Data

MA 7-Day Positivity Rate = **1.71%**

(Down from **2.05%** two weeks ago; up from **1.65%** one week ago)

Johns Hopkins University Coronavirus Resource Center

<https://coronavirus.jhu.edu/testing/testing-positivity>





Current Public Health Data

**Shrewsbury
COVID-19 Case Count Last 14 Days =
9 Cases
(0.6 Cases/Day)**

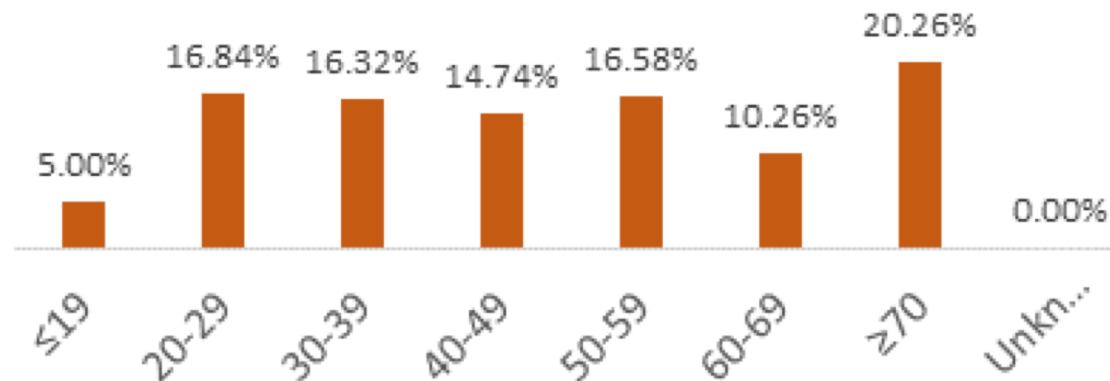
**9 cases/38,000 population =
0.0002%
(two ten-thousandths of one percent)**



Current Public Health Data

Shrewsbury Cases of COVID-19 by Age (Total Cases Since Pandemic Began)

Positive COVID-19 Cases by Age in the Town of
Shrewsbury 9.9.2020





Current Public Health Data

Shrewsbury 14-Day Positive Test Rate

Five Weeks Ago = 1.23%

Four Weeks Ago = 1.00%

Three Weeks Ago = 0.72%

Two Weeks Ago = 0.56%

Last Week = 0.49%

This Week = 0.39%

<https://www.mass.gov/doc/weekly-covid-19-public-health-report-september-9-2020/download>

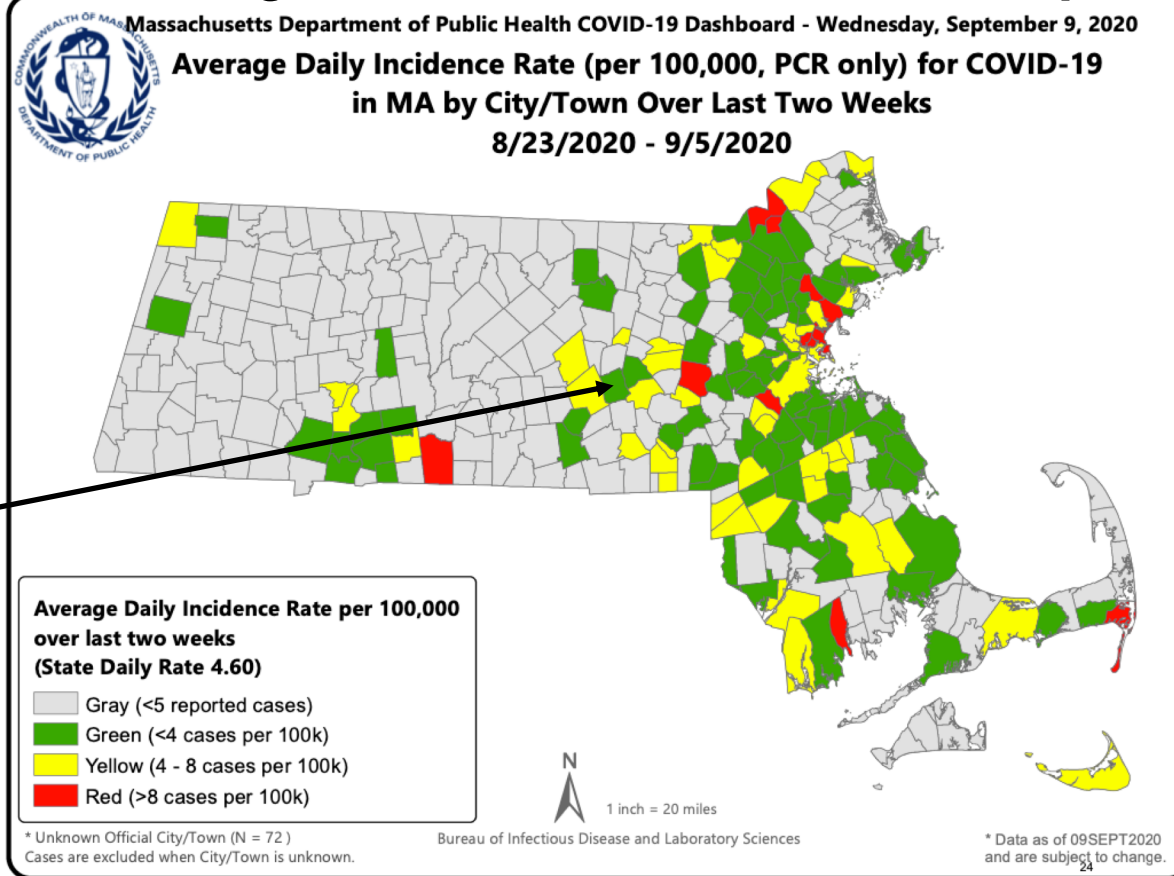


Current Public Health Data

Shrewsbury 14-Day Cases per 100,000 = 1.6

No change in rate since last week's report

Shrewsbury
Case Count
Last 14 Days =
9 Cases
(0.6 Cases/Day)





Monitoring of Data & Learning Model

With new color-coded metric from DPH / COVID-19 Command, DESE is issuing additional guidance for selecting a learning model

New color-coded metric*	DESE expectation for learning model
RED Average daily cases per 100,000 is greater than 8	Remote
YELLOW Average daily cases per 100,000 is between 4 - 8	Hybrid OR Remote (if extenuating circumstances)
GREEN Average daily cases per 100,000 is less than 4	Full-time in-person OR Hybrid (if extenuating circumstances)
UNSHADED Fewer than 5 total cases over the past 14 days. Generally, this is for communities with small populations and very few cases.	

**Measured as a 14-day rolling average and will be reported weekly as part of the online DPH dashboard*



Monitoring of Data

- MDPH color-coded metric for average daily cases per 100,000 people over 14 days (color; metric increasing or decreasing)
- Number of daily cases in community increasing or decreasing
- Percentage of positive tests below 5.0%; increasing or decreasing



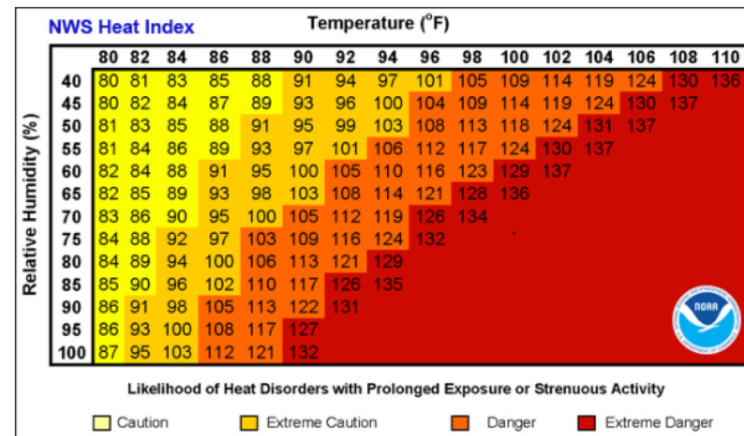
Monitoring of Data & Potential Closure/Remote Learning

- If Shrewsbury moves to “yellow” or “red” status and/or trends in community metrics are concerning; or
- If more than one case in a school or series of single cases in a short time span
- Superintendent will consult with Central Mass Regional Public Health Alliance and other medical authorities regarding potential short-term closure of a school or district shift to remote learning



Addressing High Heat/Humidity Days in Hybrid Model

- If National Weather Service forecast is for “Extreme Caution,” Superintendent may decide not to hold school in person or have early release day due to fewer options to mitigate plus mask wearing
- If very hot conditions indoors due to prolonged heat, could have “heat day” even if in “Caution” zone





School-Specific Reopening Plans Available on SPS Website

<https://schools.shrewsburyma.gov/district/school-reopening-plans-september-2020>

INDIVIDUAL SCHOOL REOPENING PLANS - SEPTEMBER 2020

Please click on a link below to view the Reopening Plan for your school.

[Parker Road & Little Colonials Preschool](#)

[Beal Early Childhood Center](#)

[Calvin Coolidge School](#)

[Floral Street School](#)

[Walter J. Paton School](#)

[Spring Street School](#)

[Sherwood Middle School](#)

[Oak Middle School](#)

[Shrewsbury High School](#)



School-Specific Reopening Plans Available on SPS Website

CALVIN COOLIDGE SCHOOL REOPENING DOCUMENT - SEPTEMBER 2020

In this manual you will find information specific to Calvin Coolidge School regarding procedures and schedules for hybrid model learning. In this document, there is some information that is accessible via links, and some information that is embedded directly into this document. Please contact Tiffany Ostrander with any questions about our reopening plan.

Our planning for the new school year was informed by the following:

1. The health & well-being of students, families, & staff is priority #1.
2. Our focus for the coming year is to develop a safe school environment for our students and staff that prioritizes everyone's well-being and enables high levels of learning for all.
3. Our planning is based on guidance from the Massachusetts Department of Elementary and Secondary Education while closely monitoring the latest information from medical experts and the evolving data regarding the pandemic both in Massachusetts and in Shrewsbury.

TABLE OF CONTENTS

CLICK A LINK BELOW TO NAVIGATE DIRECTLY TO A SPECIFIC SECTION.

1. HYBRID SCHEDULE	15. SPECIALS
2. REMOTE LEARNING SCHEDULE	16. PROCEDURES RELATED TO STAFF WHO WORK IN MORE THAN ONE BUILDING
3. SCHOOL ARRIVAL PROCEDURES	17. MASKS AND MASK BREAKS
4. SCHOOL DISMISSAL PROCEDURES	18. HANDWASHING PROCEDURES
5. LATE ARRIVAL/EARLY DISMISSAL PROCEDURES	19. RESTROOM PROCEDURES
6. PARENT DROP-OFF OF STUDENT ITEMS	20. COMMUNAL SPACES
7. STUDENT STORAGE OF BELONGINGS	21. TEACHER TEAM MEETINGS
8. HALLWAY AND STAIRWAY TRAVEL	22. STAFF MEETINGS
9. SHARING OF STUDENT MATERIALS	23. PARENT MEETINGS
10. ENGLISH LANGUAGE INSTRUCTION	24. NURSES' OFFICE
11. SPECIAL EDUCATION SERVICES AND MEETINGS	25. MEDICAL WAITING ROOM
12. STUDENT SUPPORT SERVICES	26. STUDENT SUPPORT SERVICES
13. LUNCH AND OTHER FOOD PROCEDURES	27. SECURITY PROCEDURES
14. RECESS	28. VISITORS
	29. OUTDOOR LEARNING SPACES
	30. DOCUMENTS FROM THE DESE AND DISTRICT



Finalizing Planning for Reopening

- Pre-K through Grade 8 teacher/team assignments released today
- Some positions still vacant, finalizing hiring in hypercompetitive environment
- Complexities of building schedules for equivalent of three schools in one (alternating cohorts plus remote cohort)



Finalizing Planning for Reopening

- Educational program will be much more robust than last spring
- Everyone is giving maximum effort to accomplish unprecedented tasks
- Patience, grace, & flexibility
- Emphasis on health & safety



COVID-19 Family Training

**Return to School
September 2020**

The following information regarding safe practices for return to school is derived from guidance from the [Centers for Disease Control \(CDC\)](#), the [Massachusetts Department of Public Health \(MDPH\)](#), and the [Department of Elementary and Secondary Education \(DESE\)](#)

Part 1 : Health and Safety Information



- **The slides in this section provide information regarding COVID-19, how it spreads, the symptoms, and ways that we can protect ourselves and others. Also included is information regarding the specific ways that these mitigation strategies are being implemented by Shrewsbury Public Schools.**

How can we protect ourselves and others?

A combination of strategies

- A combination of mitigation strategies is required; one will not work on its own
 - All students must wear face masks consistently and in the proper manner
 - Everyone should do their best to avoid "close contact" by not being within 6 feet distance of others for 15 minutes at a time
 - Students should wash/sanitize their hands frequently
 - Students must stay home if they are sick
- We are all in this together and ask that families partner with us in maintaining a safe school environment



More details can be found in the
[SPS Reopening Plan](#)

How can we protect ourselves and others?

Staying home when sick



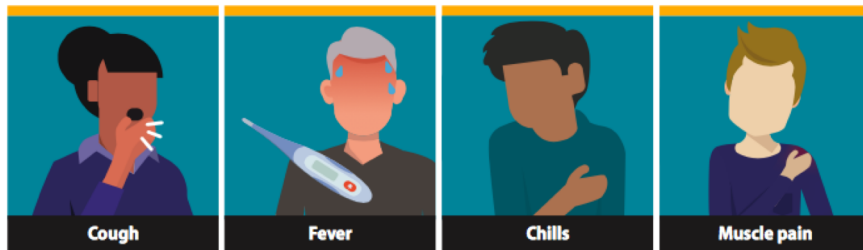
- **This is VERY important! Students MUST STAY HOME if they are sick!**
- **The symptoms of COVID-19 (see next slide) overlap with those of many common illnesses or conditions such as seasonal allergies, flu and the common cold**
- **Students who have symptoms must stay home until they are evaluated by a health care provider and may need to be tested for COVID-19 before returning to school**

More information can be found in the [SPS Protocols for COVID-19 Scenarios](#)

Symptoms of COVID-19

Symptoms of Coronavirus (COVID-19)

Know the symptoms of COVID-19, which can include the following:



Symptoms can range from mild to severe illness, and appear 2-14 days after you are exposed to the virus that causes COVID-19.

Click for the [CDC symptom checker](#)

- There is a wide range of symptoms, ranging from mild to severe
- The most common symptoms include:
 - Fever or chills
 - Cough
 - Shortness of breath/difficulty breathing
 - Body aches
 - Fatigue
 - Sore throat
 - Loss of taste or smell
 - Nausea, vomiting or diarrhea
 - Headache*
 - Nasal congestion or runny nose*

* when combined with at least one other symptom



Daily self-assessment of symptoms



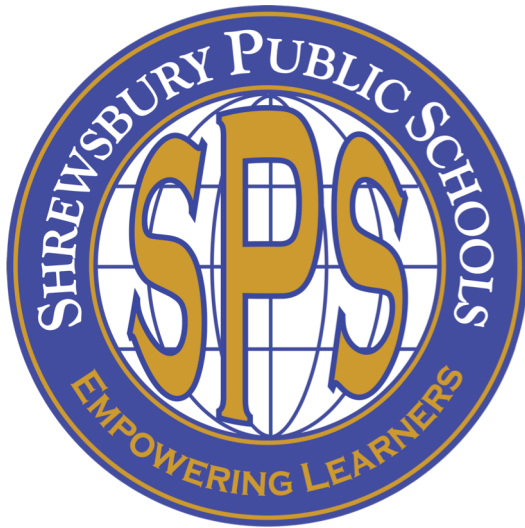
- While there is no requirement for in-school screening of body temperatures or illness history, families are required to ask the following questions before sending a student to school:
 - If you answer yes to any of the following, your child should NOT attend school
 - Has the student had any of the following in the last 3 days: fever ≥ 100 , cough, shortness of breath, sore throat, congestion or runny nose*, headache*, fatigue, unexplained body or muscle aches, nausea, vomiting, diarrhea, new loss of taste or smell?
 - Has the student or anyone in the household and/or close contacts** been diagnosed with or suspected of having COVID-19 in the last 14 days?
 - Has the student been told by Dept of Public Health to quarantine or isolate?
 - Has the student traveled outside of Massachusetts*** within the last 14 days?

* When combined with at least one other symptom ** "Close contact" is defined as being within 6 feet for a period of 15 minutes or more

*** Follow [MA Travel Order](#), "lower-risk" states may change based on positive cases, so check for updates if traveling

How can we protect ourselves and others?

Staying home when sick



More details can be found in the
[SPS Reopening Plan](#)

- **ALL families must complete the screening outlined on the previous slide *EACH DAY* before sending their student to school**
- **If the answer to any of the questions is "yes", the student must stay home from school**
- **Report absences to the child-safe line in your child's school and include as much information as possible regarding symptoms when leaving a message**
- **School nurses will follow up to discuss symptoms and determine what follow up is required before returning to school**

What happens if a student becomes ill at school?



- The student will be sent to the school nurse so they can be evaluated and appropriate action can be taken



- If the nurse determines that the student's symptoms are consistent with possible COVID-19, the student will need to be dismissed and will wait for dismissal in a supervised care space which is separate from the health office



More information can be found in the [SPS Protocols for COVID-19 Scenarios](#)

How can we protect ourselves and others?

Student dismissal if ill at school



More details can be found in the
[SPS Reopening Plan](#)

- Students who are found to have possible COVID-19 symptoms will be dismissed from school
- In order to limit exposure of symptomatic individuals to others, dismissal should occur within 30 minutes of a call to dismiss whenever possible
- Families should provide in PowerSchool a minimum of three (3) emergency contacts (this can include parent/guardians) who are available to pick up the student
- Please verify that the contact information in PowerSchool is up-to-date and accurate by accessing the PowerSchool [Parent Portal](#)

How can we protect ourselves and others?

Positive COVID-19 at home



- If a student or a member of their household tests positive for COVID-19, we ask that the family notify the school nurse in their building and/or the [Director of School Nursing](#) as soon as possible
- Notification will prompt nursing staff to reach out to you for support, and will also allow for contact tracing to begin as soon as possible. Contact tracing is essential in limiting the spread of COVID-19. Confidentiality will be maintained at all times. Only those staff required to assist in contact tracing will be informed of the identity of the student who is ill.

Part 2: COVID-19 Stress and Mental Health



- We recognize that all that we are dealing with in relation to COVID-19 can be stressful, and that the effects of that stress can be both physical and emotional. We also recognize that for some of us who struggle with our mental health, these times are particularly difficult. Please do not hesitate to reach out if you are in need of assistance.

* The *SPS Well Being Guide* can be accessed by clicking [here](#)

Part 3 : Possible COVID-19 Scenarios



- The slides in this section address possible COVID-19 scenarios that may occur in school. While community metrics are favorable and make it safe to open schools at this time, it is very possible that we could have a positive case in our schools at some point, and it is important to remember that we are masking and distancing, etc. to protect ourselves from that possibility

More information can be found in the [SPS Protocols for COVID-19 Scenarios](#) document



What will happen if there is a *positive COVID-19 case* in the school community?

- **When a positive case is identified, the school nurses will work with the CMRPHA* staff to begin contact tracing and notification of close contacts**
- **Because we are using 6 feet distancing and keeping in mind close contact parameters, it is unlikely that entire classrooms will need to be quarantined**
- **For privacy reasons, the identity of the positive individual will be kept confidential to the greatest extent possible**
- **Any decision to close a classroom, building or the district will be made in consultation with CMRPHA***
- **Dr. Sawyer will provide district-wide notifications of de-identified COVID-19 data as needed, in addition to regular updates regarding the overall picture regarding COVID-19 public health data related to the school district**

***CMRPHA = Central Massachusetts Regional Public Health Alliance of which Shrewsbury is a member**



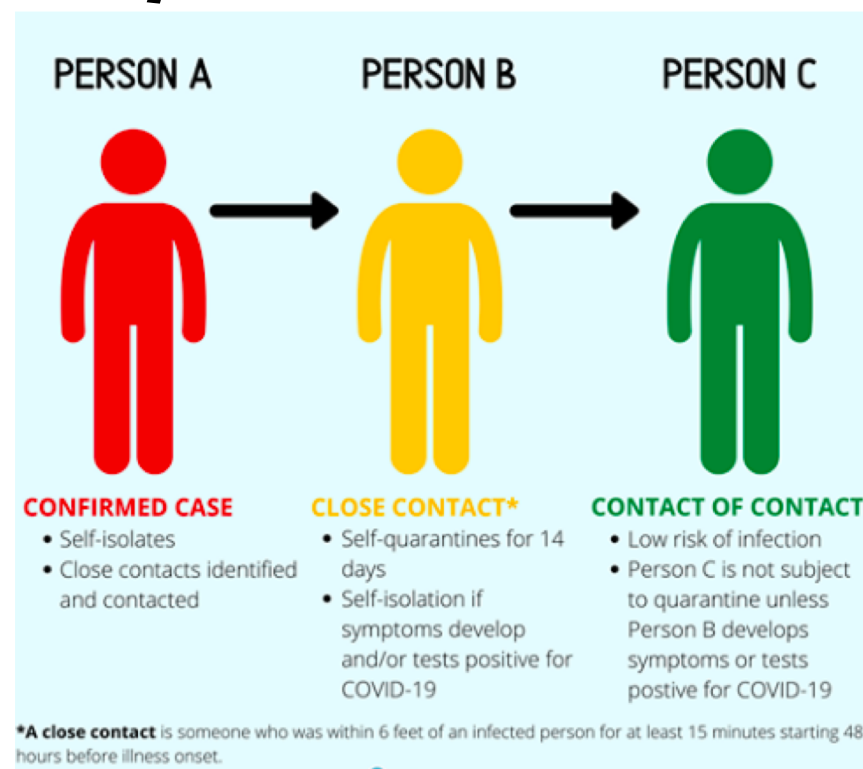
What will happen if someone is *identified as a close contact to a positive case?*

- **Close contact is defined as being within 6 feet for a period of 15 minutes or more**
- **The infectious period for someone who tests positive begins 2 days prior to symptom onset, or if there are no symptoms, 2 days prior to the date of the test. Contact tracing looks to identify close contacts that occurred during that period.**
- **If a student or staff person is identified as a close contact to a positive case, they should be tested for COVID-19 :**
 - **If test negative - need to quarantine for 14 days from last contact with positive individual**
 - **If test positive - self-isolation for at least 10 days and until at least 24 hours have passed with no fever and improvement in other symptoms**
 - **If not tested* - need to self quarantine for 14 days from last contact with positive individual**

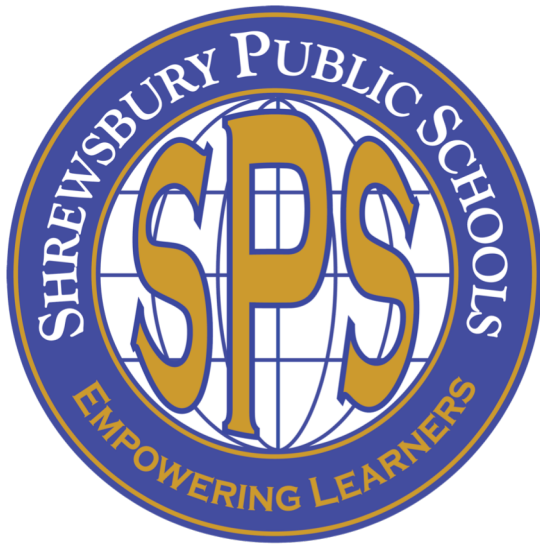


What happens if someone is identified as a *contact of a close close contact of a positive case*?

- People often ask about being a "contact of a contact"
- For example: "My husband's co-worker tested positive and they were at work together last week. Does that mean my children need to be tested? Do the children need to stay out of school?"
- The answer is, "Your husband should be tested, and no, as a contact of a contact, other household members do not need to be tested or stay out of school **UNLESS** your husband is symptomatic or tests positive."



Part 4: SPS COVID-19 safety protocols



- The remainder of the slides in the family training provide details on how day-to-day operations (lunch, restrooms, hallways, mask breaks, arrival and dismissal, buses, etc) will look when we return to school.

Flu Vaccine Reminder



- The state of Massachusetts now requires a *FLU VACCINE* for *ALL* students in order to attend school, regardless of whether attending in-person or remotely.
- Flu vaccines are available through your healthcare provider and at many local pharmacies. Students must receive the vaccine and provide documentation to the school nurse in their building by 12/31/20.

* MDPH School Immunization Requirement information can be found [here](#)

SPS Safety Protocols - breakfast



- **Due to the limitations of our food service capacity at this time, BREAKFAST WILL NOT BE SERVED at Shrewsbury High School, Oak Middle School, nor Sherwood Middle School as it was in the past**
- **Breakfast WILL be served at Coolidge School ONLY per National School Lunch Program regulations**
- **Students should plan to eat breakfast before going to school each day as eating will not be permitted in the classroom other than at scheduled snack times**
- **We recognize that not having breakfast available at school may be difficult for some students and families in our community. Families for whom this presents a hardship should not hesitate to reach out to the school nurse in their building to discuss the issue and resources that may be available.**

SPS Safety Protocols - lunch



- **The cafeterias, gymnasiums, and/or other designated spaces will be utilized for lunch in order to maximize space and allow for 6 feet distancing**
- **Students will sit at desks or tables that are spaced 6 feet apart, facing the same direction**
- **Desks will be numbered and students will be assigned to sit at the same desk each day to assist in contact tracing if necessary**
- **Masks will be removed after students are seated for eating, and replaced before leaving seat**
- **Students will wash/sanitize hands before and after lunch**

SPS Safety Protocols - lunch



- **Per a recent decision by the the USDA, lunch will be available for free to all students until December 31st unless curtailed by them earlier**
- **A brown-bag lunch including a milk will be the standard offering**
- **Snack items, salads, and individual drinks will not be available for purchase**
- **Students who have opted for remote learning and hybrid students on their "at-home learning days" may pick-up meals at Shrewsbury High School on Tuesdays and Thursdays from 10am-11am at the main driveway**

SPS Safety Protocols - buses



- **Whenever possible, we will follow MA DESE guidance that provides one student per bench seat except for siblings who will sit together on the same bench**
- **Upon boarding, bus drivers will direct students where to sit. Temporary bus monitors could not be hired due to lack of applicants**
- **All students must wear a mask while riding the bus**
- **Weather permitting, bus windows will remain open when students are riding**

SPS Safety Protocols - buses



- **Students will adhere to 6 feet social distancing when boarding and disembarking**
- **While the fee has been waived for the first half of the school year, all students must register for service in order to be approved for busing so we can control ridership counts**
- **Buses will be dis-infected every night**
- **Bus drivers will wipe down high touch points between bus runs**



Key Messages

- 1) The health & well-being of students, families, & staff is priority #1.
- 2) Our focus for the coming year is to develop a safe school environment for our students and staff that prioritizes everyone's well-being and enables high levels of learning for all.
- 3) We are planning based on guidance from the MA Department of Elementary & Secondary Education while closely monitoring the latest information from medical experts and the evolving data regarding the pandemic both in Massachusetts and in Shrewsbury.