



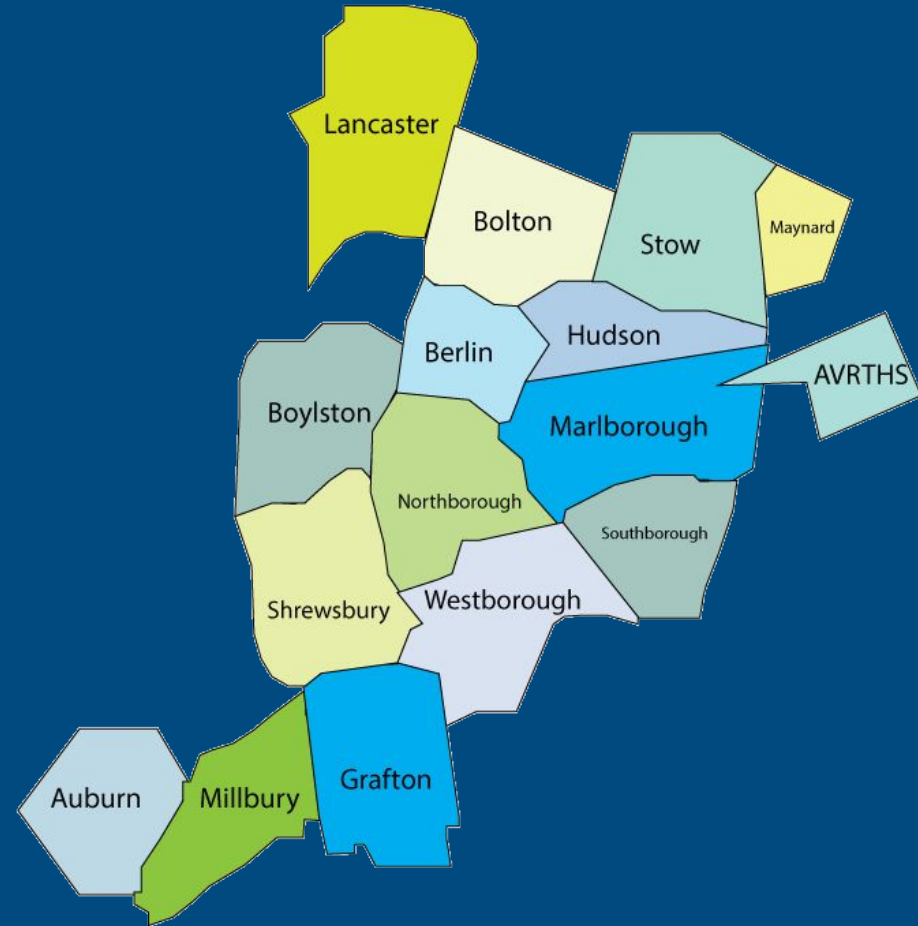
SPS Equity Audit Report

— Reflections and Recommendations —

Assabet Valley Collaborative

Auditors:

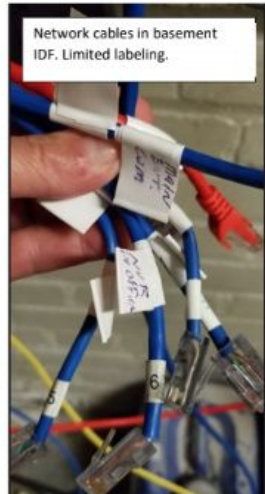
Dr. Cathy Cummins
and
Kiesha Lamb



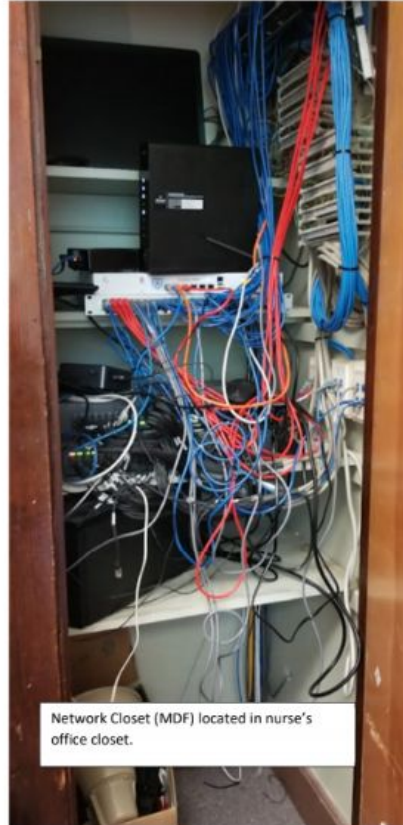
OSA NETWORK INFRASTRUCTURE



Connection located in the basement closet (shared closet IDF).



Network cables in basement IDF. Limited labeling.



Network Closet (MDF) located in nurse's office closet.

The Elephant(s) in the room

1. **The elephant**
2. **The nameless voices**
3. **The priority**

The Elephant

Core Tensions

The Nameless Voices

Stakeholders

The Priority

Co-designing with Diversity,
Equity, and Inclusion at the
center

**“Not everything that is
faced can be changed, but
nothing can be changed
until it is faced.”**

James Baldwin

Recommendations

