

STAR ASSESSMENTS: NEW TOOLS FOR ALL

***A Report on Initial Assessment Results
March, 2021***

THE BIG IDEA: INFORMATION IS POWER

- Implementing a universal screener helps us address strategic goals
- The Star assessment gives us additional information on how our students are doing academically
- Information informs teaching and planning



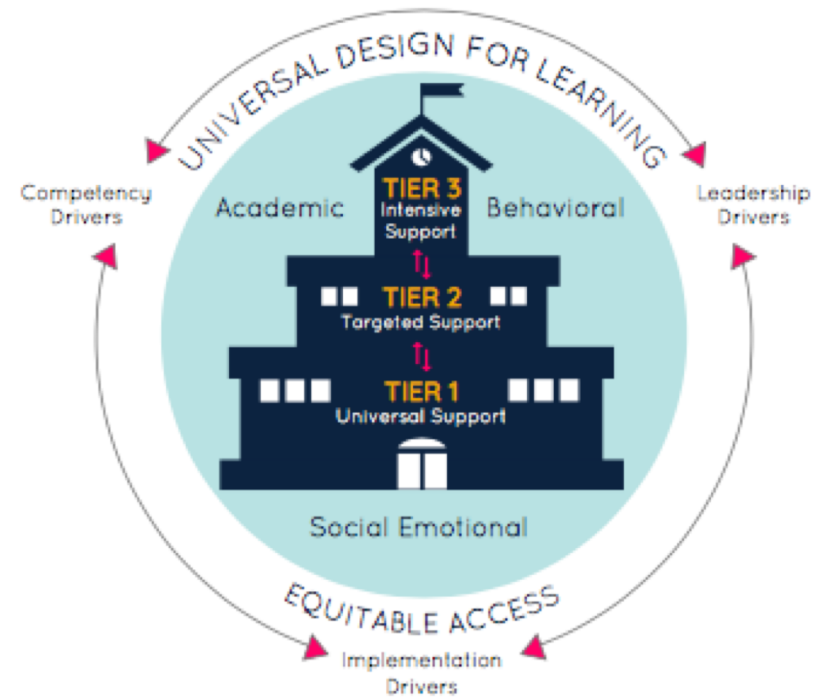
THIS TOOL ALIGNS WITH OUR STRATEGIC GOALS FOR 2022:

LEARNING ENVIRONMENTS WHERE EVERYONE'S SUCCESS MATTERS

- Create a common understanding of the benefits of inclusive schools and develop a shared, systematic approach to ensure that everyone has equitable access and opportunity for successful learning
- Ensure that all staff actively participate in professional development focused on inclusive and culturally proficient practices that improve learning and school cultures
- Analyze data related to academic performance and other indicators of success to identify existing gaps among populations; determine and implement action steps for improvement; and demonstrate success at closing these gaps

THE POWER OF A UNIVERSAL SCREENING TOOL

Universal screening is the systematic **assessment** of all students on academic and/or social-emotional indicators for the **purpose of** identifying students who are at-risk, and may require support that varies in terms of level, intensity, and duration.



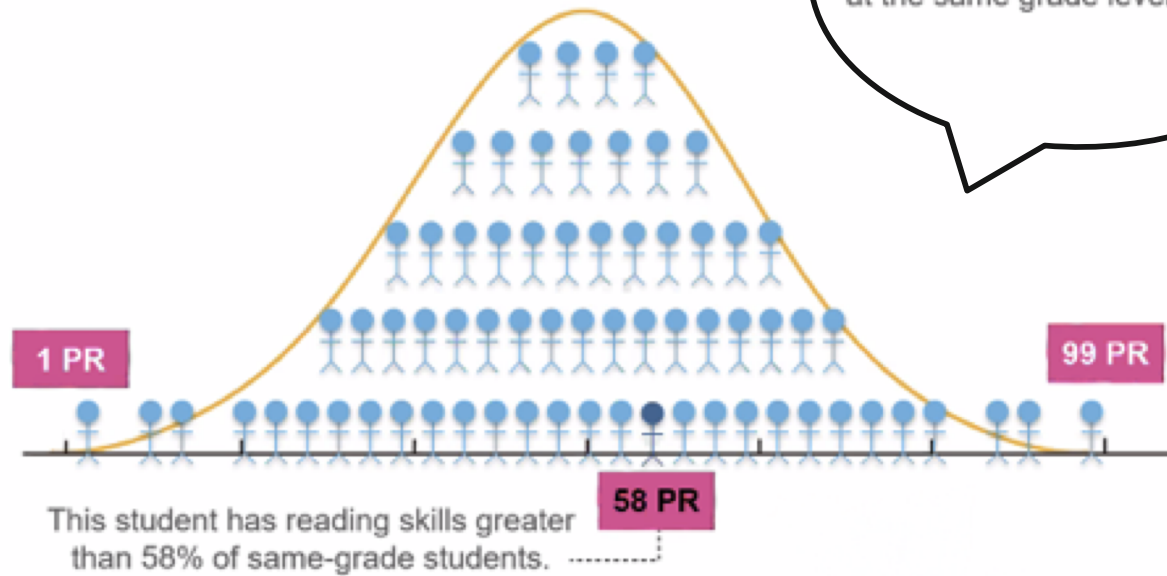
A TEST SCORE IS A SNAPSHOT

What's the big picture?



PERCENTILE RANK

Percentile Rank (PR)



PERCENTILE RANK RESULTS : EARLY LITERACY

Grade	# Students Tested	At/ Above Benchmark At/Above 40 Percentile rank	On Watch 25-39 Percentile rank	Intervention 10-24 Percentile rank	Urgent Intervention Below 10 Percentile rank
K	279	220 (79%)	27 (10%)	18 (6%)	14 (5%)
1	219	123 (56%)	29 (13%)	44 (20%)	23 (11%)
2	31	2 (6%)	5 (16%)	6 (19%)	18(58%)
3	8	0 (0%)	0 (0%)	1 (13%)	7 (88%)
Total	537				

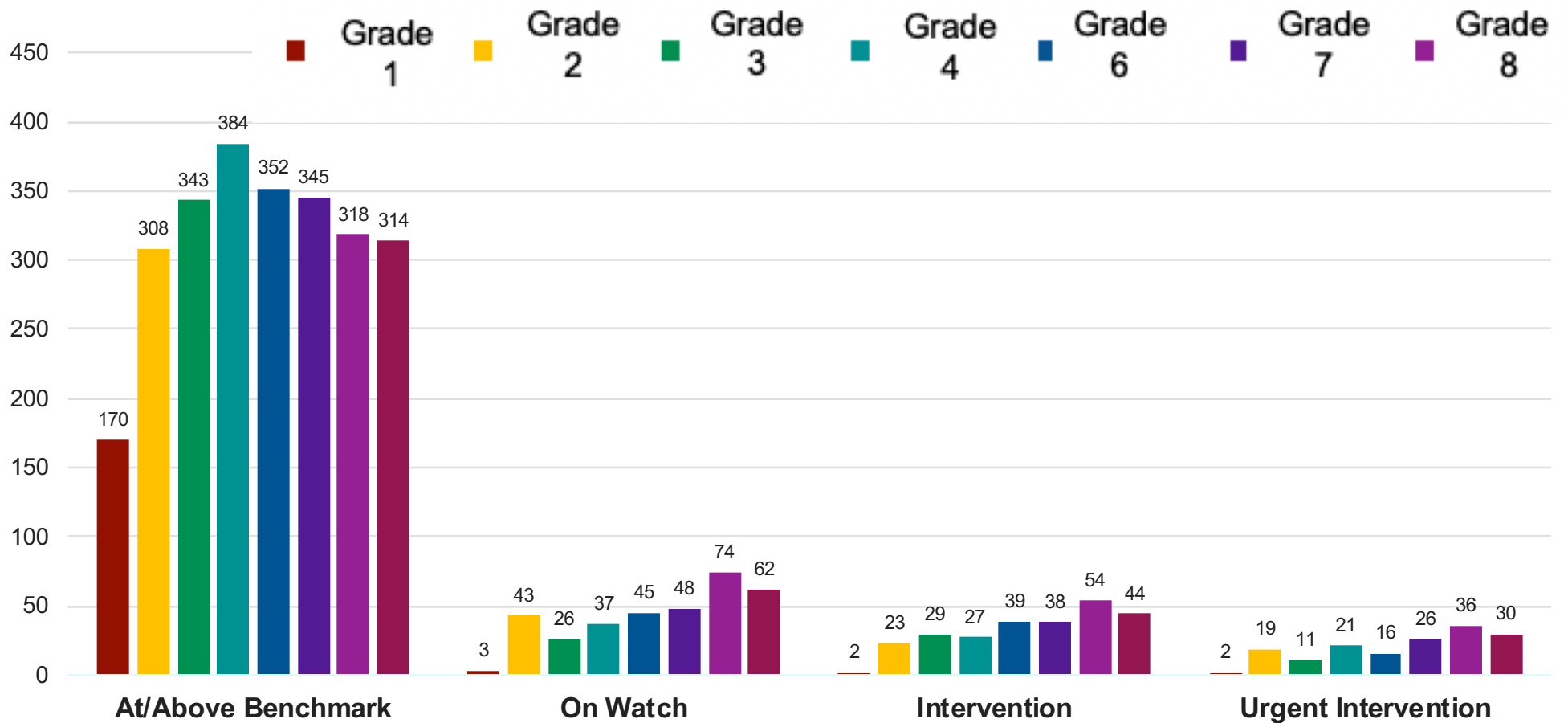


PERCENTILE RANK RESULTS : STAR READING



Grade	# Students Tested	At/ Above Benchmark At/Above 40 PR	On Watch 25-39 PR	Intervention 10-24 PR	Urgent Intervention Below 10 PR
1	177	170 (96%)	3 (2%)	2 (1%)	2 (1%)
2	393	308 (78%)	43 (11%)	23 (6%)	19 (5%)
3	409	343 (84%)	26 (6%)	29 (7%)	11 (3%)
4	469	384 (82%)	37 (8%)	27 (6%)	21 (4%)
5	452	352 (78%)	45 (10%)	39 (9%)	16 (4%)
6	457	345 (75%)	48 (11%)	38 (8%)	26 (6%)
7	482	318 (66%)	74 (15%)	54 (11%)	36 (7%)
8	450	314 (70%)	62 (14%)	44 (10%)	30 (7%)

Star Reading Assessment Results

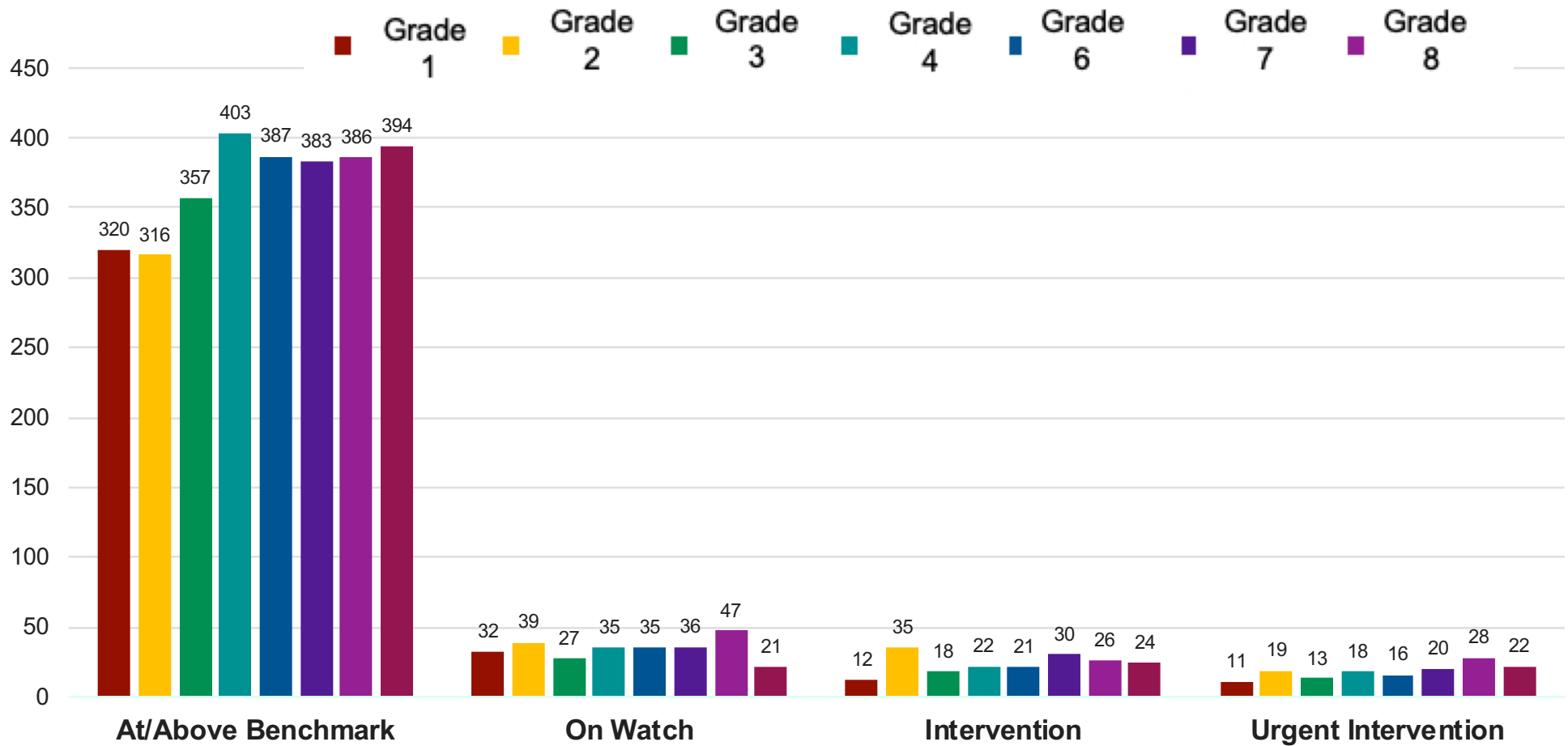


PERCENTILE RANK RESULTS : STAR MATH

Grade	# Students Tested	At/ Above Benchmark At/Above 40 PR	On Watch 25-39 PR	Intervention 10-24 PR	Urgent Intervention Below 10 PR
1	375	320 (85%)	32 (9%)	12 (3%)	11 (3%)
2	409	316 (77%)	39 (10%)	35 (9%)	19 (5%)
3	415	357 (86%)	27 (7%)	18 (4%)	13 (3%)
4	478	403 (84%)	35 (7%)	22 (5%)	18 (4%)
5	459	387 (84%)	35 (8%)	21 (5%)	16 (3%)
6	469	383 (82%)	36 (8%)	30 (6%)	20 (4%)
7	487	386 (79%)	47 (10%)	26 (5%)	28 (6%)
8	461	394 (85%)	21 (5%)	24 (5%)	22 (5%)
Total	3,553				



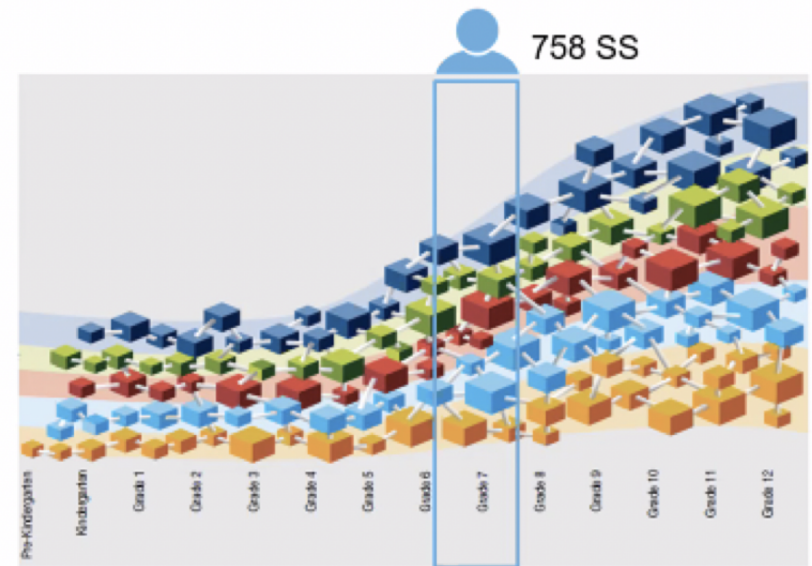
Star Math Assessment Results



STAR SCALED SCORES

A scaled score shows where a student falls on the learning progression.

Student performance is on the Star scale

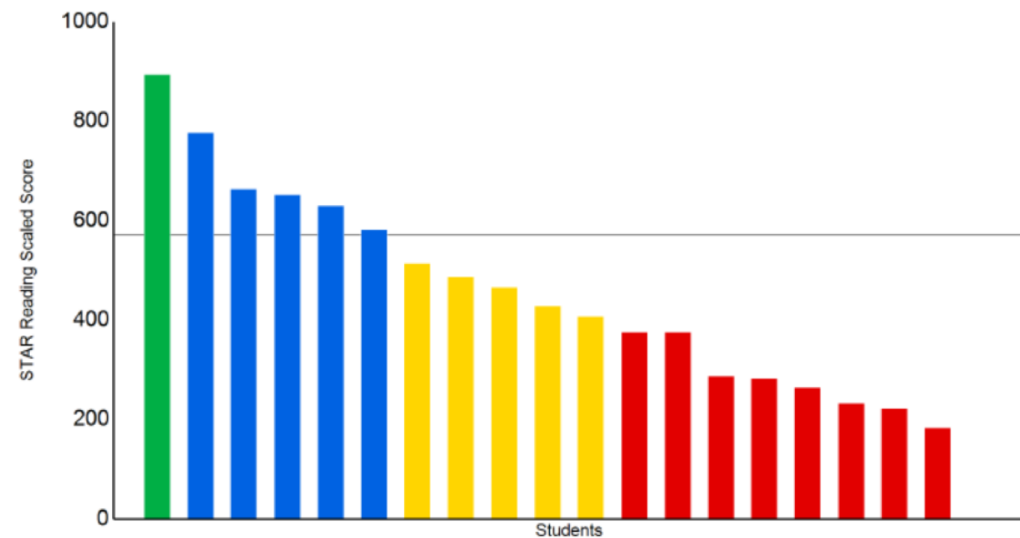


STATE BENCHMARKS

This is a sample report, not actual SPS data.

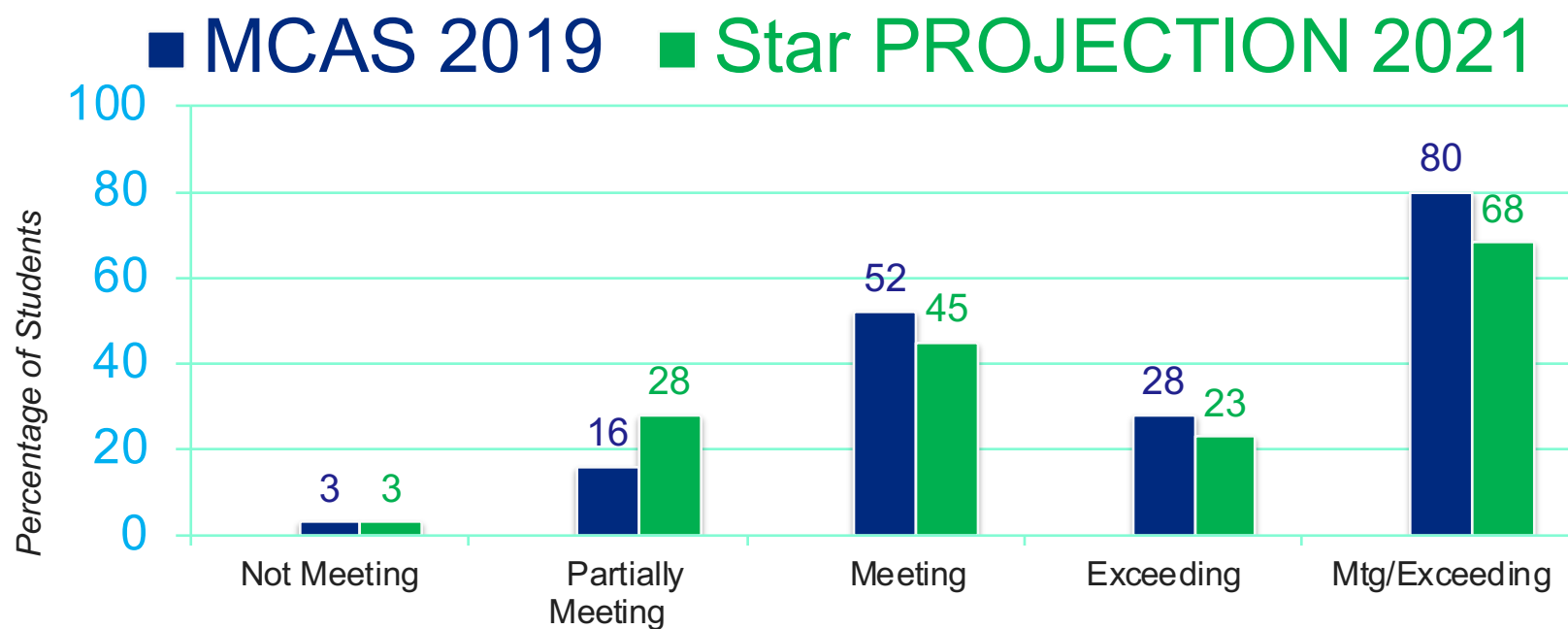


Grade: 4

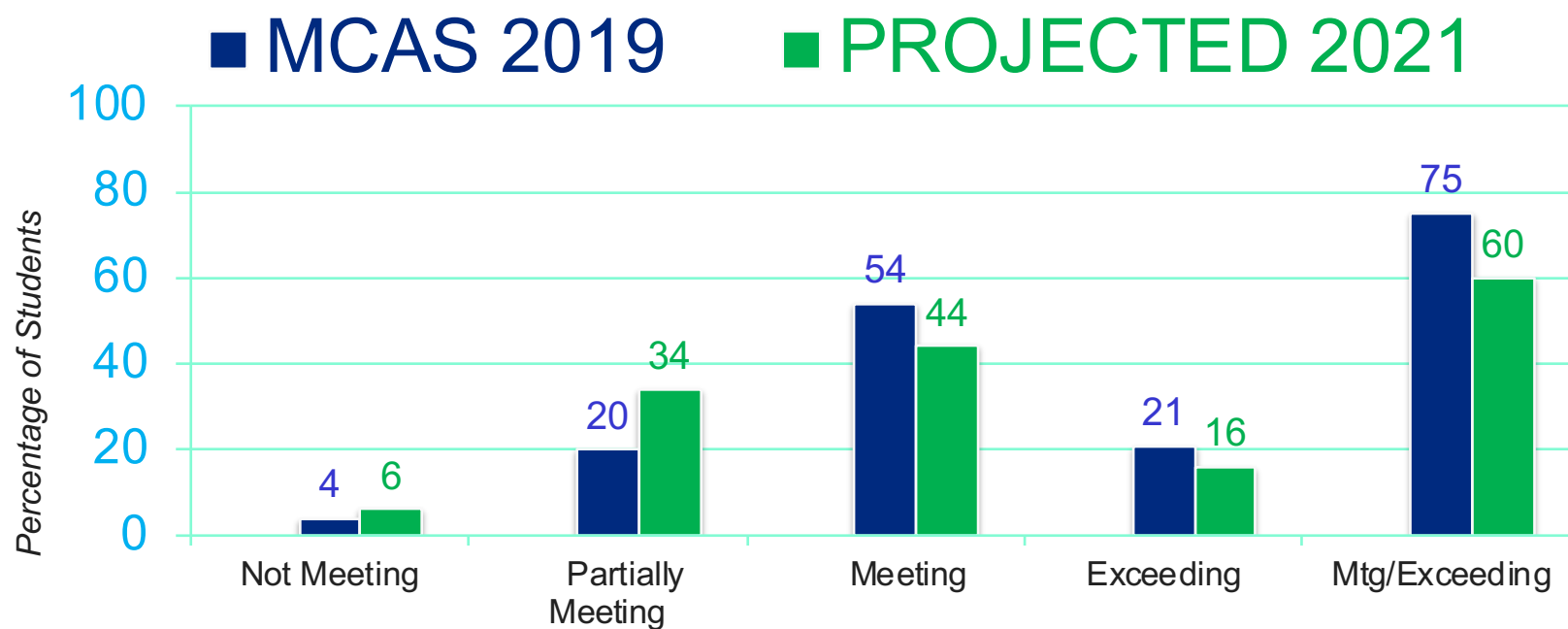


Categories / Levels	Current Benchmark ^d	Number	Percent	Benchmark At Time of State Test
Proficient				
■ Advanced	At/Above 891 SS	1	5%	At/Above 891 SS
■ Proficient	At/Above 572 SS	5	26%	At/Above 572 SS
Category Total		6	32%	
Less Than Proficient				
■ Basic	Below 571 SS	5	26%	Below 572 SS
■ Below Basic	Below 396 SS	8	42%	Below 397 SS
Category Total		13	68%	
Students Tested		19		

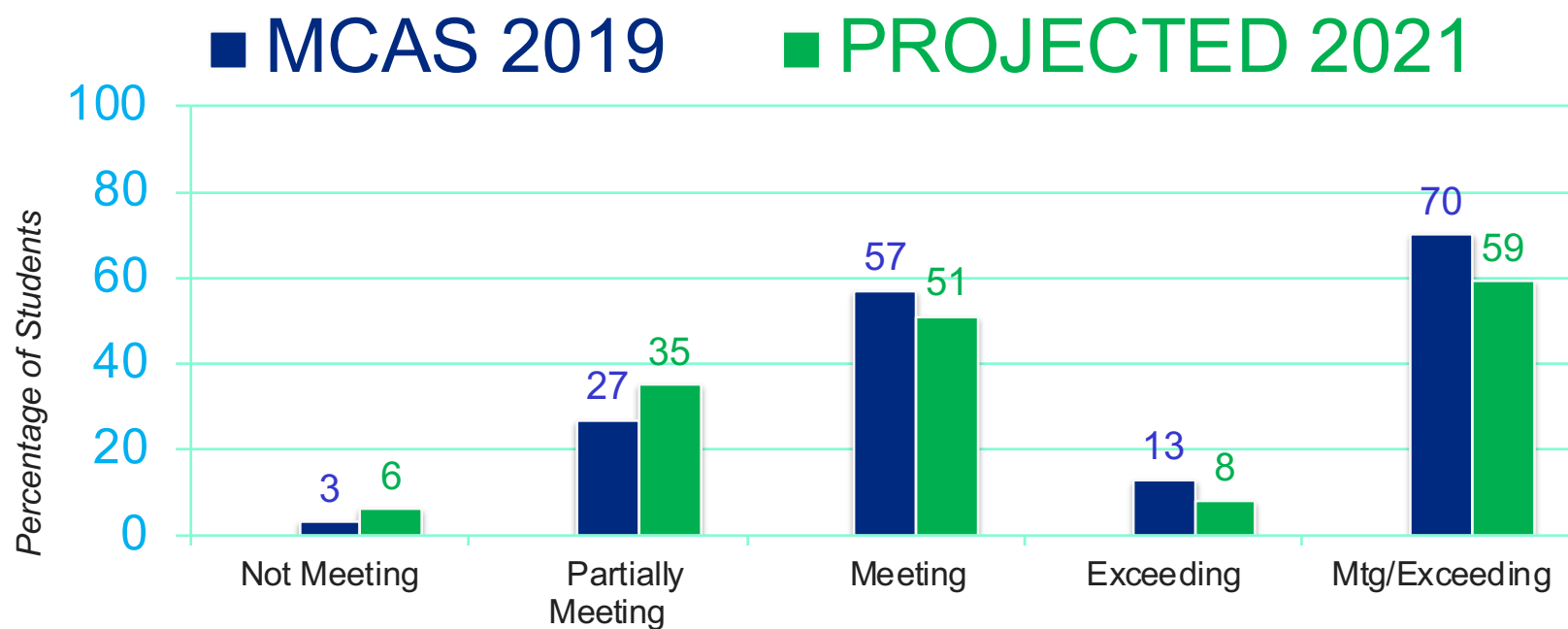
STAR READING RESULTS GRADE 3



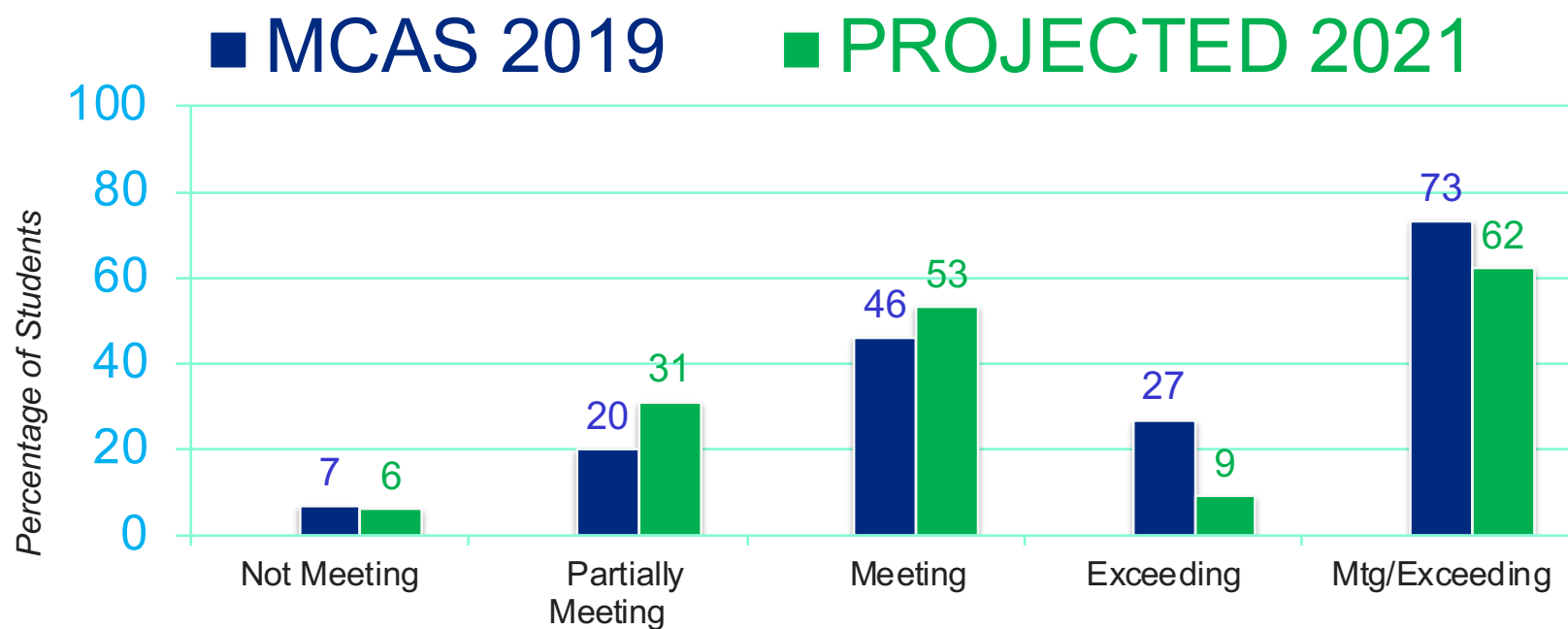
STAR READING RESULTS GRADE 4



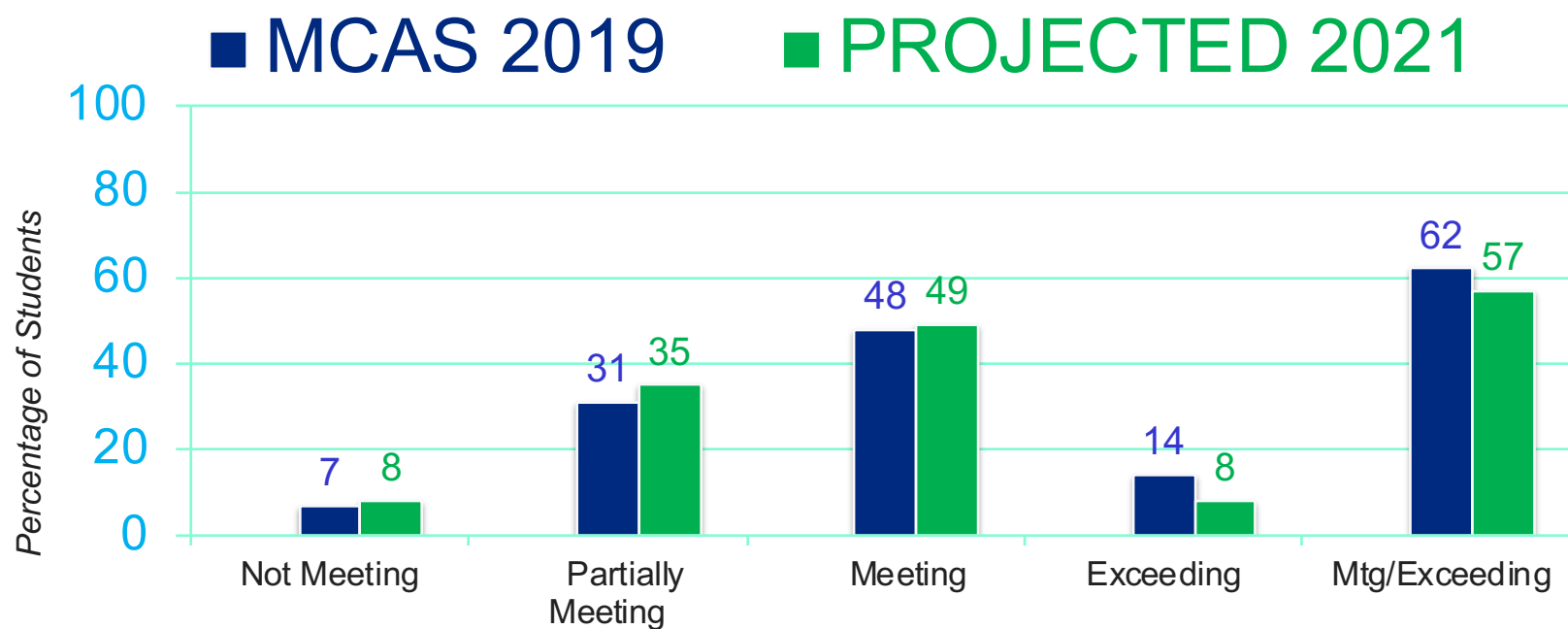
STAR READING RESULTS GRADE 5



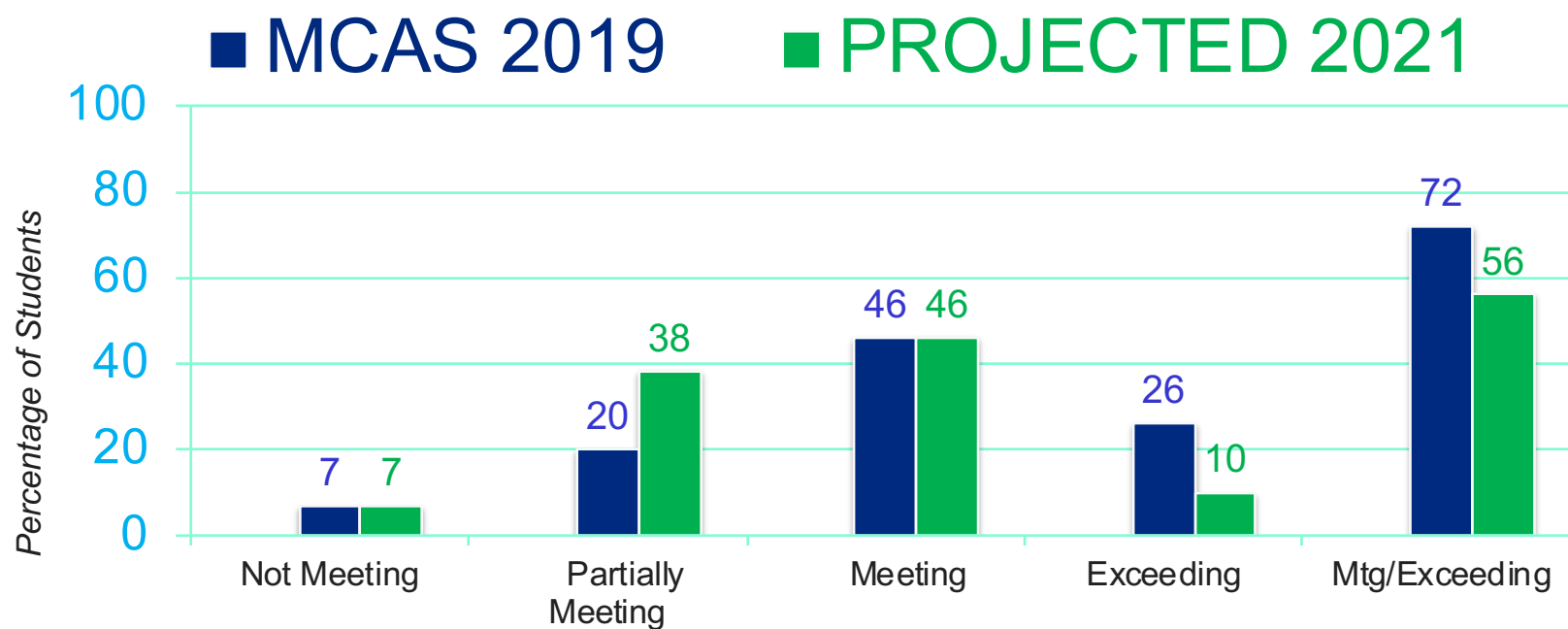
STAR READING RESULTS GRADE 6



STAR READING RESULTS GRADE 7



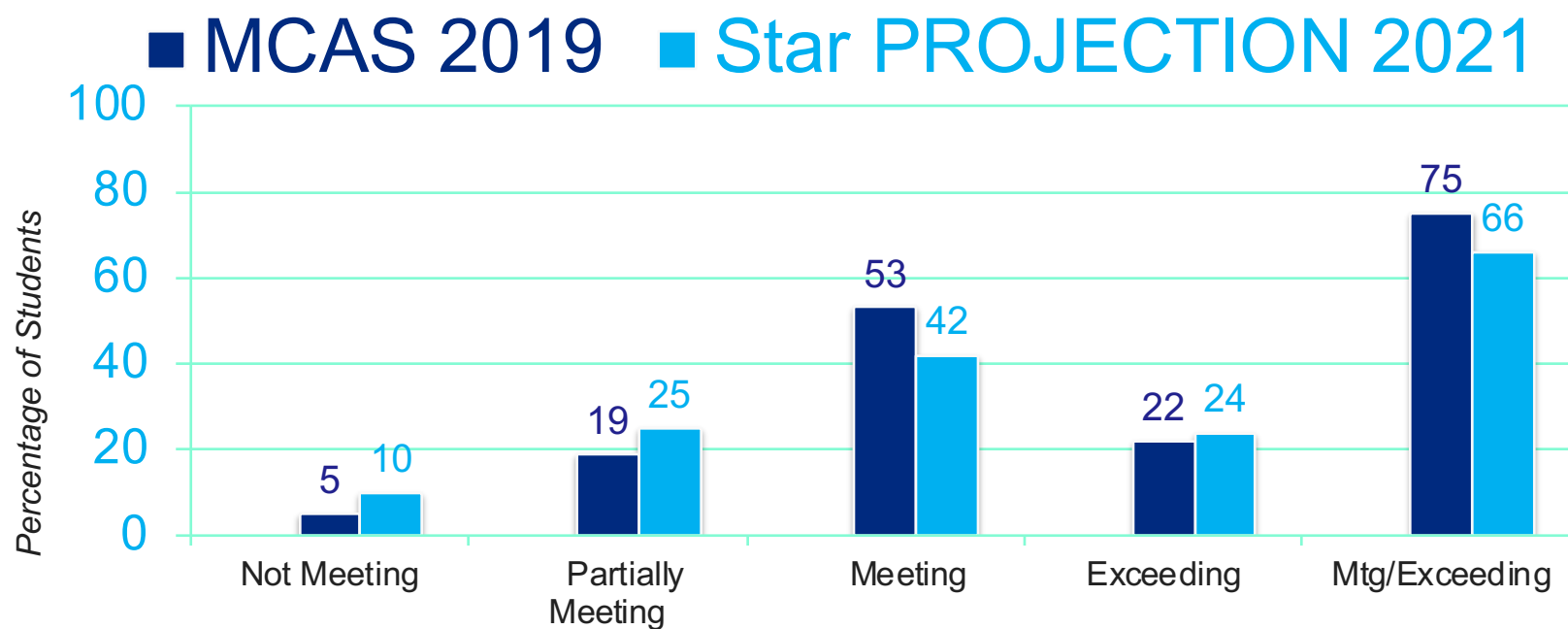
STAR READING RESULTS GRADE 8



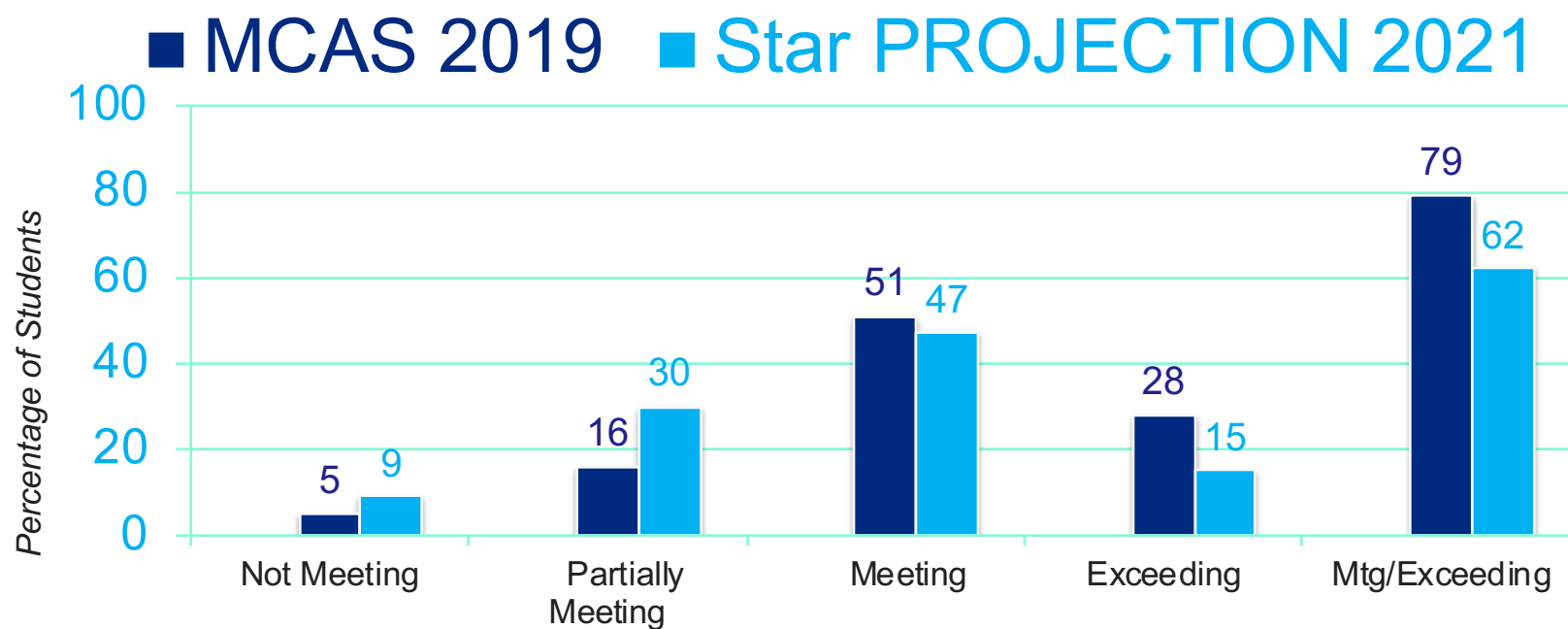
SUMMARY : MCAS ELA/**STAR READING** COMPARISONS GR 3-8

Grade and Subject	Gr 3	Gr 4	Gr 5	Gr 6	Gr 7	Gr 8
Shrewsbury % Level M/E 2019 ELA	81%	76%	71%	73%	62%	72%
Star % Projection M/E 2021	68%	60%	59%	62%	57%	56%

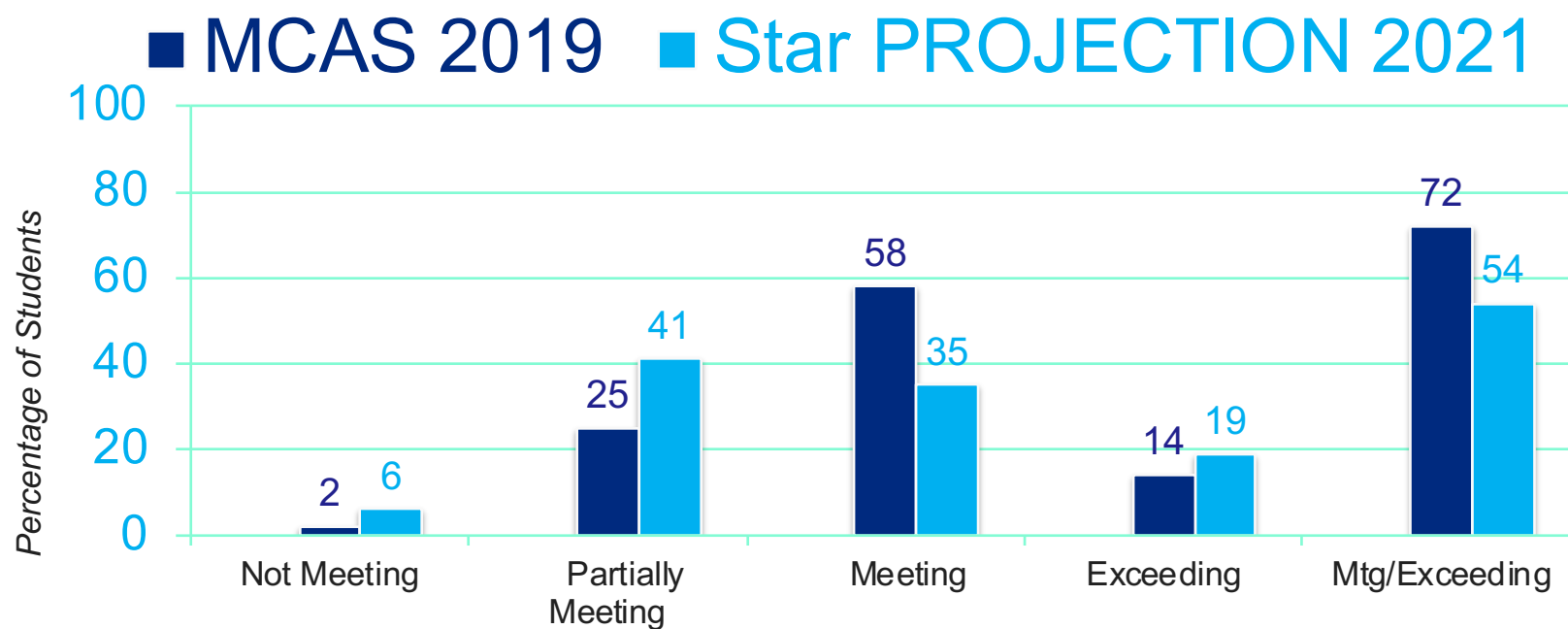
STAR MATH RESULTS GRADE 3



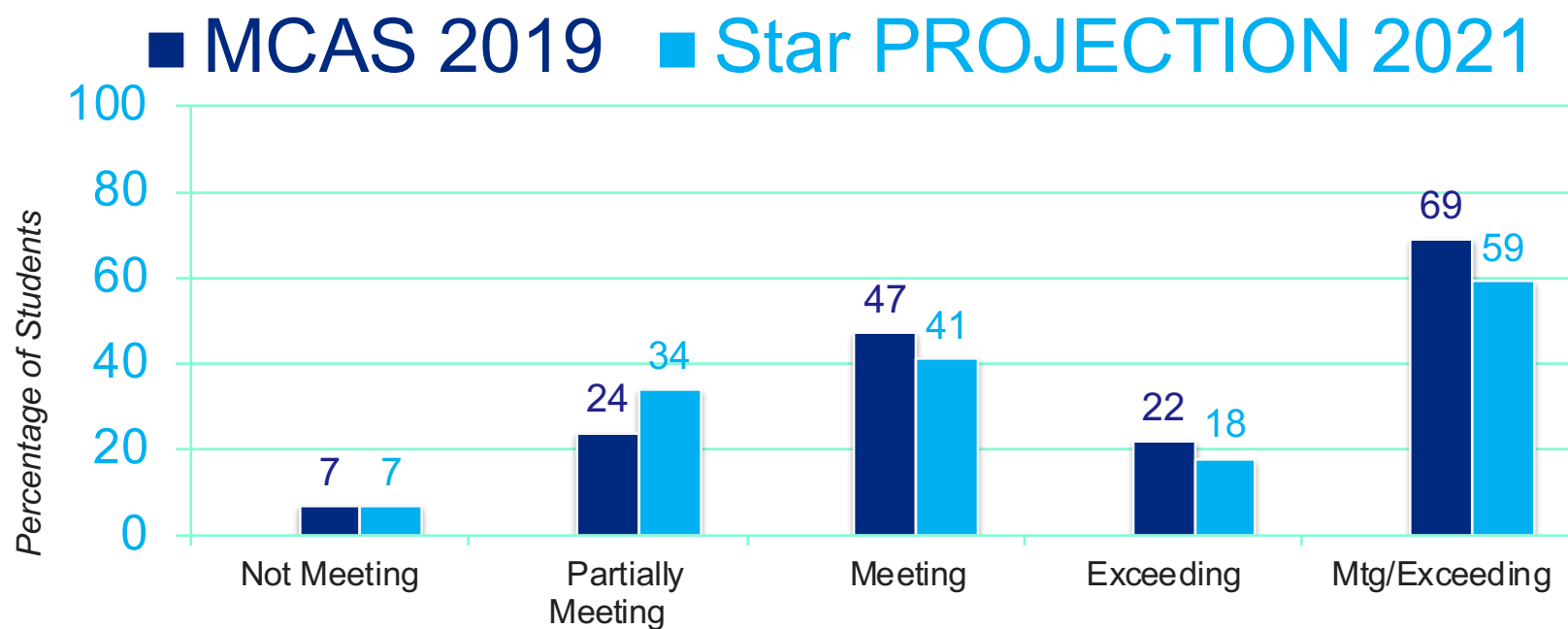
STAR MATH RESULTS GRADE 4



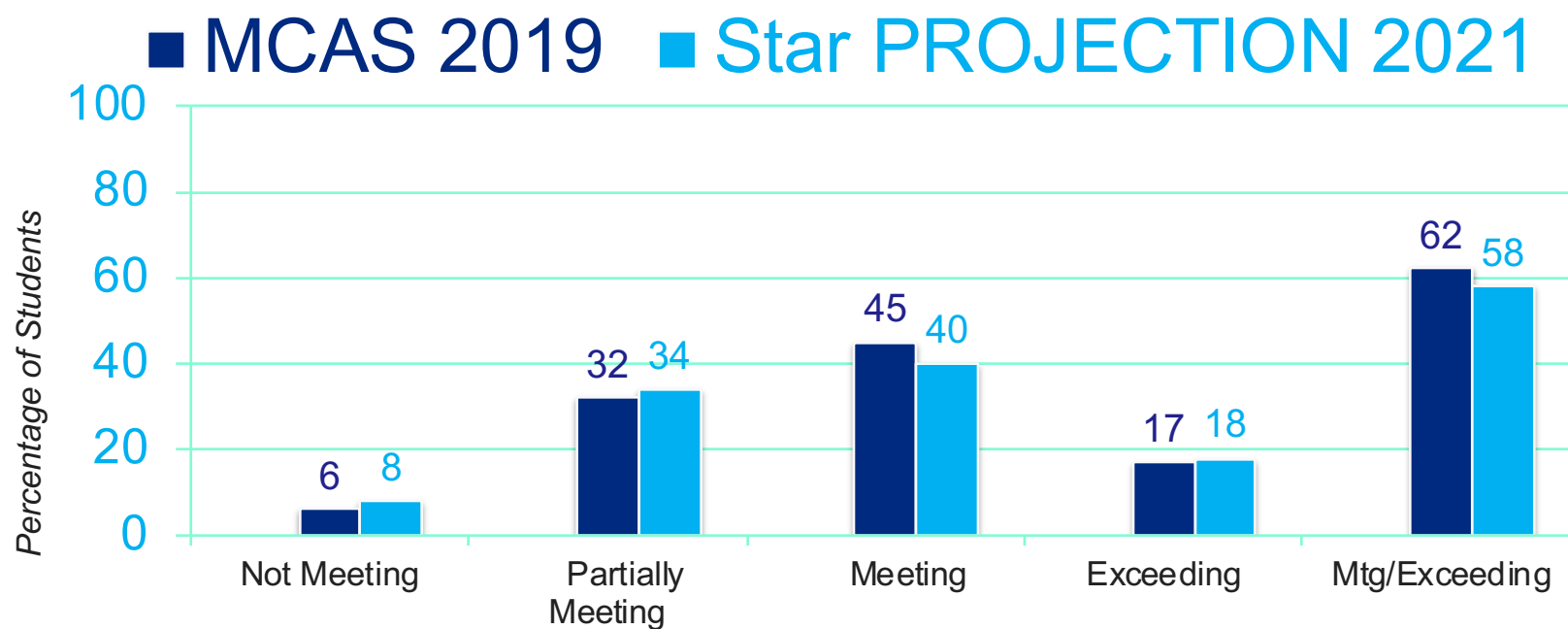
STAR MATH RESULTS GRADE 5



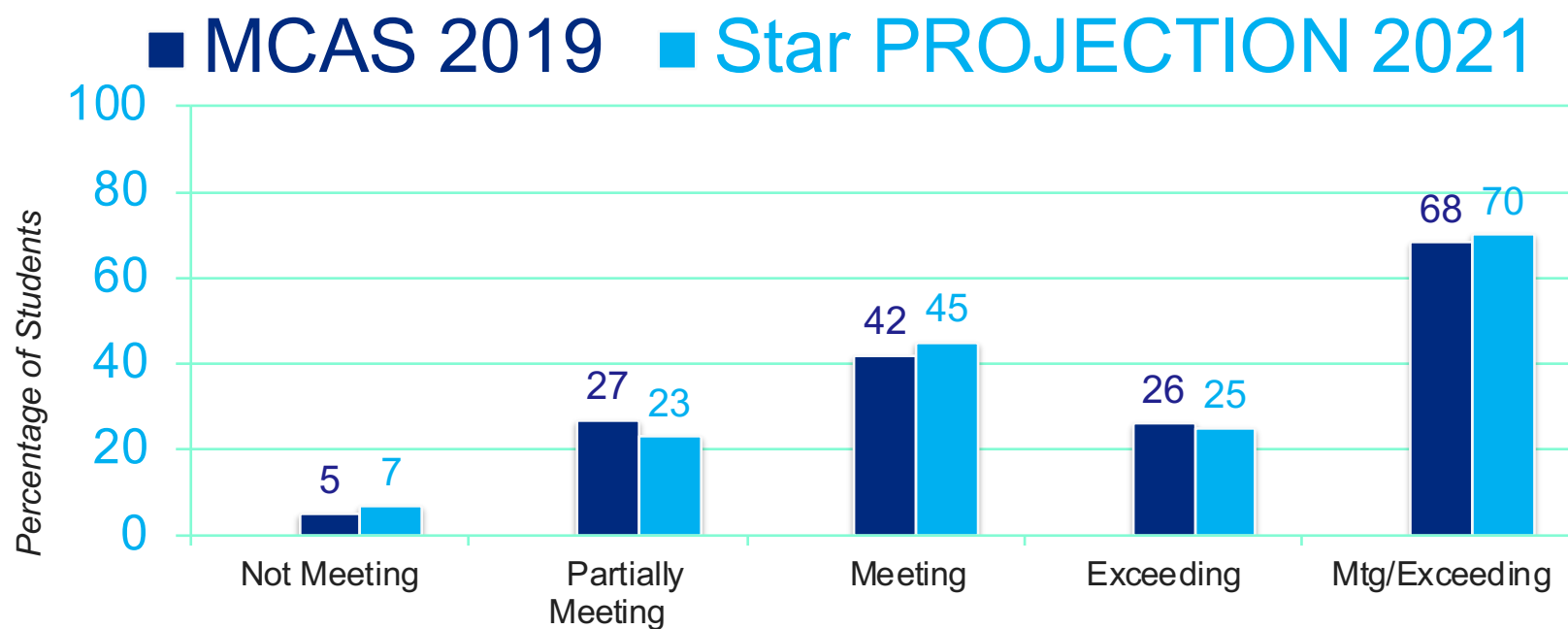
STAR MATH RESULTS GRADE 6



STAR MATH RESULTS GRADE 7



STAR MATH RESULTS GRADE 8

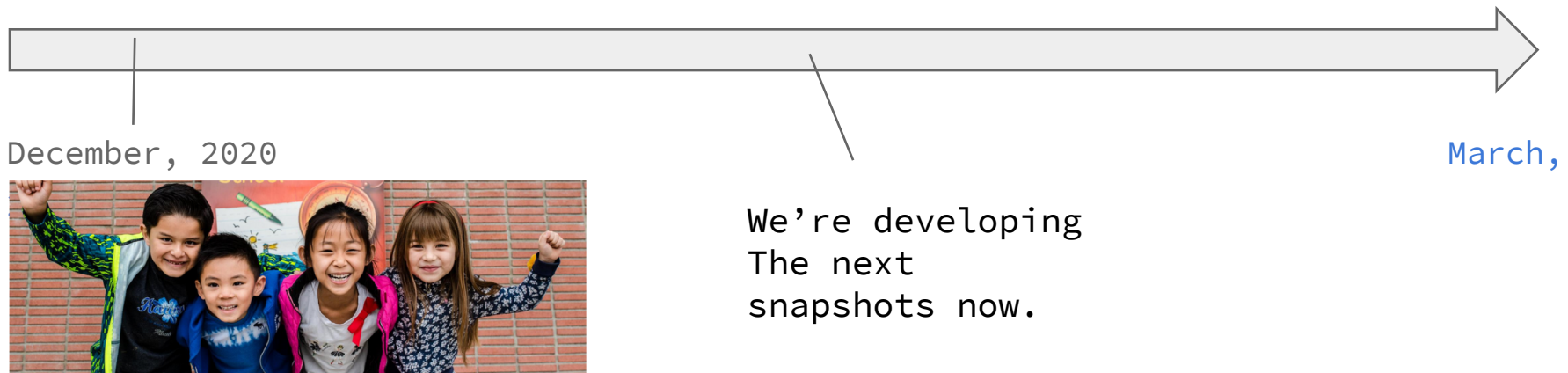


SUMMARY : MCAS / STAR MATH COMPARISONS GR 3-8

Grade and Subject	Gr 3	Gr 4	Gr 5	Gr 6	Gr 7	Gr 8
Shrewsbury % Level M/E Math 2019	75%	79%	73%	69%	63%	68%
Star % Projection M/E 2021	66%	62%	54%	59%	58%	70%

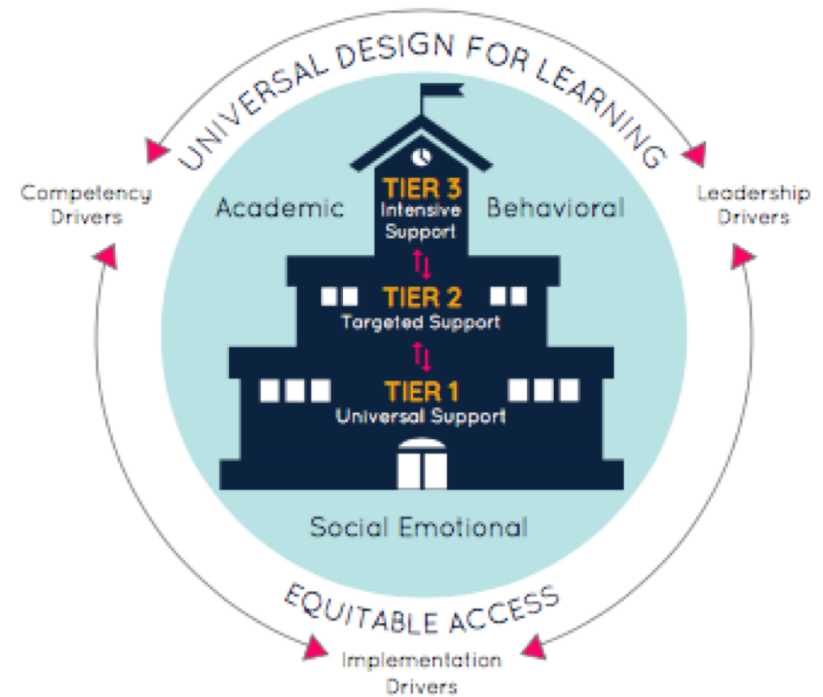
A TEST SCORE IS A SNAPSHOT

The whole story will become clearer with more data.



THE POWER OF A UNIVERSAL SCREENING TOOL

Universal screening is the systematic **assessment** of all students on academic and/or social-emotional indicators for the **purpose of** identifying students who are at-risk, and may require support that varies in terms of level, intensity, and duration.



THANKS

Thanks to the following volunteers for going first:

<i>Lynn Pinto</i>	<i>Beal, Kindergarten</i>
<i>Jen Flemming</i>	<i>Coolidge Grade 1</i>
<i>Ani Marold</i>	<i>Floral Grade 3</i>
<i>Meghan Kelley</i>	<i>Floral Grade 3</i>
<i>Nicole Cormier</i>	<i>Paton Grade 4</i>
<i>Lindsey Halloran</i>	<i>Spring Grade 2</i>
<i>Vickie McCarthy</i>	<i>Sherwood Grade 5</i>
<i>Moira Cristy</i>	<i>Sherwood Grade</i>
<i>Sara Heal</i>	<i>Oak Grades 7 & 8</i>
<i>Jen Dufault</i>	<i>Oak Grade 8</i>



SYSTEMS THINKERS

Thanks to the following people, who served for two years on the Systems of Student Success (S3) Academy Team

Maureen Henry

Lisa Daly

Tiffany Ostrander Gina Kelly

Erin Kendrick

Tara Plourde

**Shelley Hoey
Gutekanst**

Karen

Patty Waterhouse

...and brought the work back with them...



...And

**Tiffany Ostrander, Meg Belsito,
Heather Gablaski, Alicia Harrigan
Maureen Monopoli & Scott Yonker**

who attended the DESE's MTSS
Leadership Academy

Together with colleagues, this
group continues to refine the
model to improve learning
outcomes.

QUESTIONS?

