

# 2015 Annual Report



Superintendent's Message



I am pleased and proud to present this annual report of the Shrewsbury Public Schools for calendar year 2015 to the Shrewsbury community. Within this document you will find information that clearly demonstrates that our town's public schools are thriving, and that our students and educators are rising to the challenges set forth by the School Committee's Strategic Priorities (shown below). You will also find short profiles of successful alumni, students, and teachers who personify our district's mission and core values and whose comments underscore our district's motto of "empowering learners."

I wish to thank Kimberlee Cantin, our Executive Assistant for Communications & Operations, and Karen Isaacson, our Director of Extended Learning, for their skillful work in creating this report. I am also grateful to the local business partners listed on the last page, whose sponsorship made the publication and distribution of this document possible.

Our district is providing a world class education for our students, but that wouldn't be possible without the support of the entire Shrewsbury community. On behalf of our students and staff, thank you!

~ Joseph M. Sawyer, Ed.D.

Strategic Priorities



A District Overview

Mission

The Shrewsbury Public Schools, in partnership with the community, will provide students with the skills and knowledge for the 21st century, an appreciation of our democratic tradition, and the desire to continue to learn throughout life.

Core Values

- ◇ Respect & Responsibility
- ◇ Collaboration & Communication
- ◇ Commitment to High Standards & Expectations
- ◇ Equity

District Administration

Mary Beth Banios, Assistant Superintendent for Curriculum & Instruction

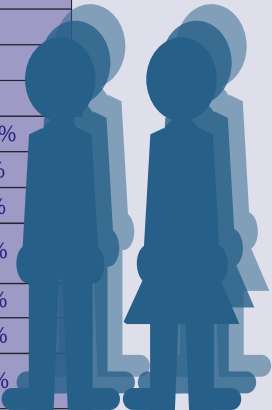
Patrick C. Collins, Assistant Superintendent for Finance & Operations

Melissa Maguire, Director of Special Education & Pupil Personnel Services

Barb Malone, Director of Human Resources

Student Demographics

% Average Shrewsbury vs. State		
Graduation Rate	96%	87%
1st language not English	26%	19%
Students with Disabilities	13%	17%
Free or Reduced Lunch	16%	44%
Economically Disadvantaged	8%	27%
Ethnicity: White	63.9%	63.7%
Asian	24.4%	6.3%
Hispanic	6.9%	17.9%
Multi-Race/ Non Hispanic	3.2%	3.1%
African American	1.9%	8.7%
Native American	0.2%	0.2%
Native Hawaiian/ Pacific Islander	0.1%	0.1%



October 1, 2015 Statistics - Sources: Department of Elementary and Secondary Education and Shrewsbury Public Schools

Accolades

**SILVER RATING**

Shrewsbury High School received "Best High School Silver Rating" from U.S. News & World Report.

**TOP 1% IN U.S.**

Newsweek ranked Shrewsbury High School top 1% in the U.S.

**TOP 2% IN U.S.**

Ranked in top 2% in U.S. by Center for American Progress for "Return On Educational Investment".

**FANTASTIC FOOD**

Ranked #3 in the state for "best food in Massachusetts Public Schools" according to Niche.com.

Our Schools

Pre-K & Elementary Schools

Parker Road Preschool (Built 1954) - Lisa Robinson, Director

Beal Early Childhood Center (Built 1922) - Chris Girardi, Principal

Calvin Coolidge School (Built 1927) - Amy Clouter, Principal

Walter J. Paton School (Built 1949) - Wendy Bell, Principal

Spring Street School (Built 1968) - Bryan Mabie, Principal

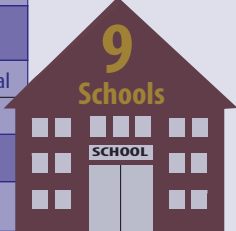
Floral Street School (Built 1997) - Lisa McCubrey, Principal



Middle Schools

Sherwood Middle School (Built 2013) - Dr. Jane Lizotte, Principal

Oak Middle School (Built 1957) - Dr. Ann Jones, Principal



High School

Shrewsbury High School (Built 2002) - Todd Bazydlo, Principal

Enrollment

Pre-K & Elementary Schools

Parker Road Preschool, Wesleyan Terrace & Little Colonials (PreK) = 239

Beal Early Childhood Center (K-Gr 1) = 311

Calvin Coolidge School (K - Gr 4) = 403

Walter J. Paton School (K - Gr 4) = 353

Spring Street School (K - Gr 4) = 360

Floral Street School (Gr 1-4) = 712

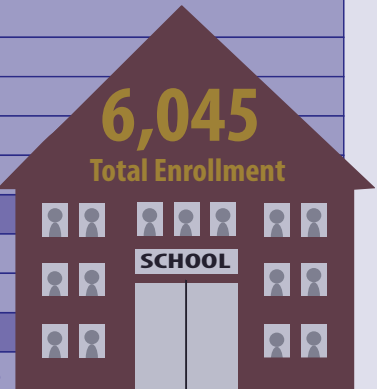
Middle Schools

Sherwood Middle School (Gr 5-6) = 972

Oak Middle School (Gr 7-8) = 1,027

High School

Shrewsbury High School (Gr 9-12) = 1,668



October 1, 2015

Staff Demographics

Administration - 37 (Includes Central Office, Principals, Assistant Principals & Directors)

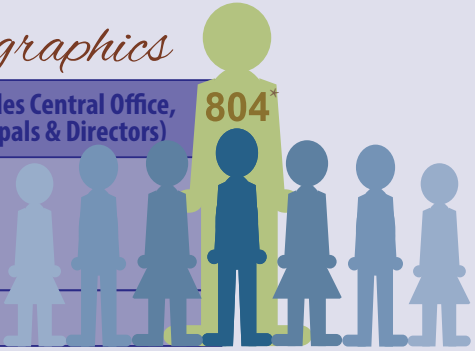
Instructional - 480

Classroom - 277

Specialists - 56

Support - 147

Classified - 287



\*Full Time Equivalents

School Committee

The Shrewsbury School Committee consists of five elected members, each of whom serves a three-year term. At the start of 2015, Dr. Dale Magee served as the committee chair, and Jason Palitsch served as vice chair. In May, John Samia was elected chair, and Sandra Fryc was elected vice chair. At that same time, Jon Wensky was elected to the seat previously held by Mr. Palitsch, who did not run for re-election. Erin Canzano served as the committee secretary throughout 2015.



Erin Canzano



Sandra Fryc



Dr. B. Dale Magee



Jason Palitsch



John Samia



Jon Wensky

## Budget Overview

The educational investment for Fiscal Year 2015 totaled \$81.9M, with primary sources of funding coming from local tax receipts and state aid. Additional sources of revenue include federal and private grants, and fee-based school programs. More than half of these revenue dollars are spent directly on teachers, paraprofessionals and instructional materials, while only 2% is designated for administrative costs (among the lowest in the state). The charts on the right provide a visual overview of where the money comes from and how it is spent.

## Service Learning

Shrewsbury High empowers all students to become capable, active, caring and involved contributors in the community by promoting a culture of service learning. The "10,000 Hour Challenge" is a service learning initiative that challenges each grade level to complete 10,000 hours of service by the time they graduate.

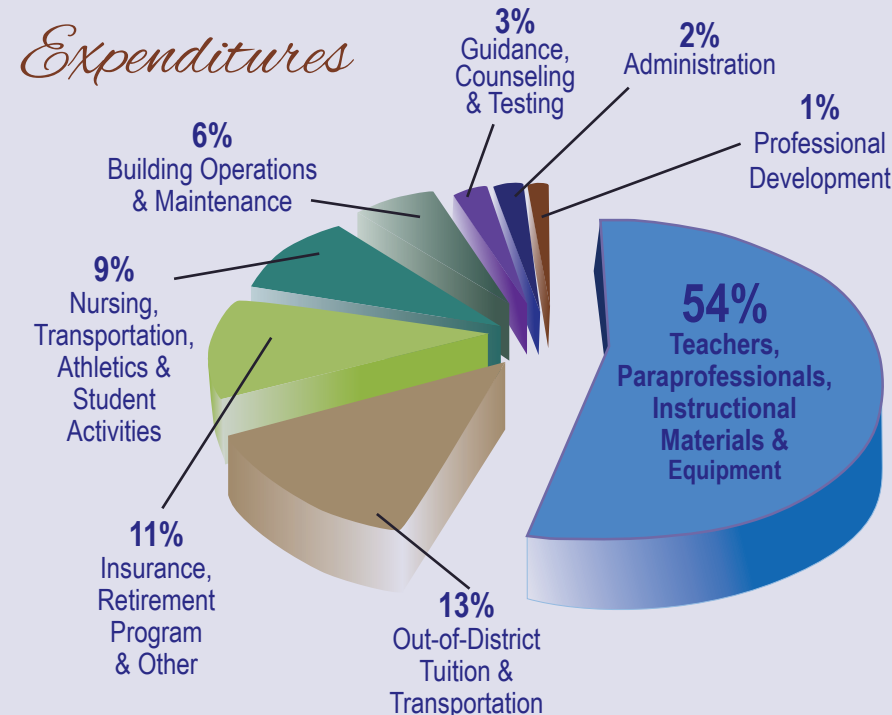
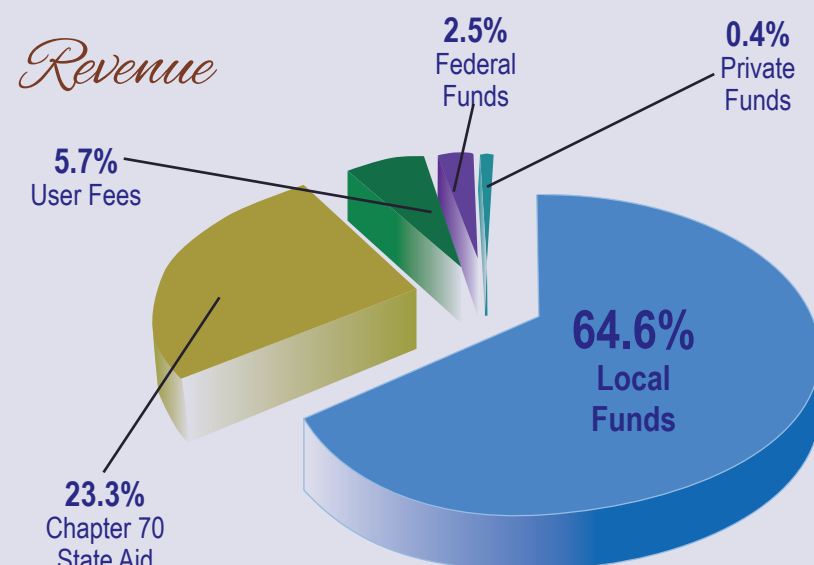
As a class, students are challenged to complete 1,000 hours as freshmen, 2,000 hours as sophomores, 3,000 hours as juniors & 4,000 hours as seniors.

**The graduating Class of 2015 exceeded this goal with a grand total of 16,070 hours of service in their four years as SHS students!**

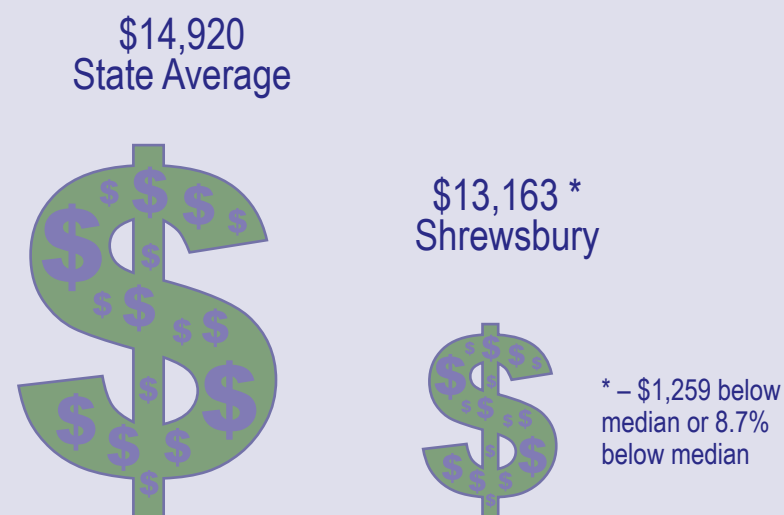


*"At SHS I learned how to think critically and analyze a problem – how to do research, develop hypotheses, and craft an effective argument. (These are) lessons that remain with and continue to guide me today. The wonderful teachers at Shrewsbury High School helped me develop the fundamental skills I needed to succeed not only in college, but well beyond."*

# A Financial Perspective



## Per Pupil Spending



## Transportation



47 Buses, 249 Routes  
4,547 Riders

## Food Services



2,300 Lunches Daily

October 1, 2015 Statistics - Sources: Department of Elementary and Secondary Education and Shrewsbury Public Schools

## Meet

**Julian Chu**, an alumnus of the class of 1989, and a graduate of Harvard University. Throughout his career, Julian has focused on business development and internet industries. He is currently an Operating Partner at Castanea Partners in Newton, MA, leading strategic initiatives in the areas of digital marketing and e-commerce.

## Meet

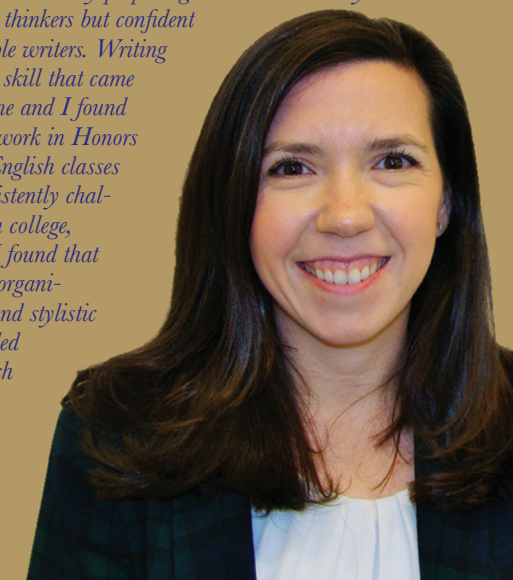
**Ruby Lee**, alumna of the class of 2009. Ruby holds undergraduate and graduate degrees in Bioengineering and Computer Science from Stanford University, and she was part of the team that developed Google's Chrome browser. She is currently a product partner at KPCB Edge, San Francisco, where she focuses on digital health and mobile marketplace companies.

*"I encountered many teachers in Shrewsbury (with an) incredible drive to inspire and challenge their students. When I entered college, amongst many peers who had attended elite prep/magnet schools, I felt that my education in Shrewsbury had thoroughly prepared me to pursue an engineering degree. Many of the things I'm still passionate about today were shaped by... Shrewsbury."*



## Meet

**Jennifer Trudeau, Ph.D.**, an alumna of the class of 2005. Jennifer, a graduate of Fairfield University, earned her Ph.D. in economics from the University of New Hampshire, and is currently in her second year as an Assistant Professor in the Jack Welch College of Business at Sacred Heart University, specializing in health economics.



*"Shrewsbury Public Schools does its students a tremendous service by preparing them to be not only analytical thinkers but confident and capable writers. Writing was not a skill that came easily to me and I found my coursework in Honors and AP English classes to be consistently challenging. In college, however, I found that I had the organizational and stylistic skills needed to approach written assignments."*

## Extended Learning

We know that learning doesn't stop when the dismissal bell rings, and students throughout the district have abundant opportunities for co-curricular and extended learning activities such as:

- Award-winning Performing Arts programs
- 60 athletic teams, 34 different sports
- 55 high school clubs
- Award-winning Speech and Debate, Robotics, and academic competition teams
- Middle school math teams (grades 5-8)
- Lego Robotics (grades 5-8)
- Over 175 Summer enrichment courses for grades PK-8
- Extended School Care Programs in six schools
- After School Activities Programs (ASAP) at all elementary schools and middle schools with specialized clubs led by Shrewsbury Public Schools professionals

### 2015 highlights include:

- In the Performing Arts, the SHS competitive play and musical won awards, while 80 middle and high school students were selected for all-central district band, chorus, or orchestra, with 8 chosen for all-state.
- 28 SHS athletic teams qualified for post-season play
- Girls Tennis - District Champions
- Robotics Team – Winner of the prestigious Chairman's Award at the New England Regional Championship
- Nine student artists honored by the Museum of Fine Arts, Boston Scholastic Art Awards
- Eight award winners from SHS at the Regional Science and Engineering fair
- Girls gymnastics – Silver Medalists in state competition

## Meet

- ▼ **Chasia Molina, Class of 2018** - Chasia is a member of the Student Innovation Team, a course that requires students to create an Independent Learning Endeavor as well as assist the Technology Department with first-level tech support.



*"Having a smart device at the tips of your fingers benefits the learning environment. It makes the lessons easier to comprehend, fun to learn, and simple to memorize. I have experienced the difference between using a paper and a pencil versus using an iPad during class. I used to be so disorganized with my notes that I could never find them in time to study for an exam. This year, thanks to the iPad initiative, my notes are accessible at any time. With the iPad, I can make interactive flashcards, assemble my notes at a faster pace or even record a verbal note."*

## Meet

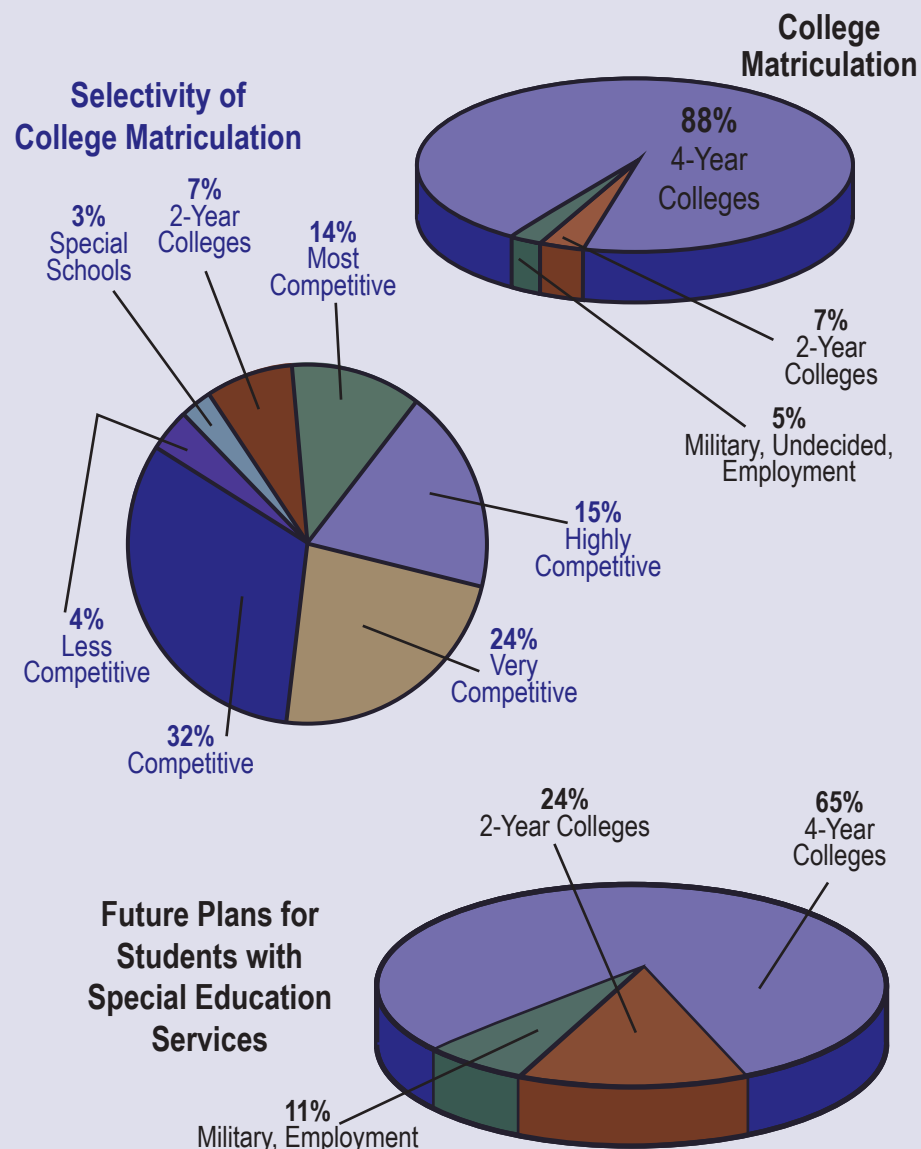
- ▼ **Charlene Costello** - Ms. Costello has worked for SPS as a Kindergarten teacher and Media Technology Integration Specialist for 30 years. She is passionate about play-based learning environments and is devoted to how technology can be appropriately used to enhance the learning of our youngest students.



*"By creating an atmosphere of learning that encourages active exploration and inquiry, I have developed opportunities for young children to become problem solvers and cooperative learners. I am excited about exploring the possibilities that technology can offer for sharing more student-created activities, as well as opportunities for students to document and reflect on their playing and learning with each other, their families, and perhaps a more global audience."*

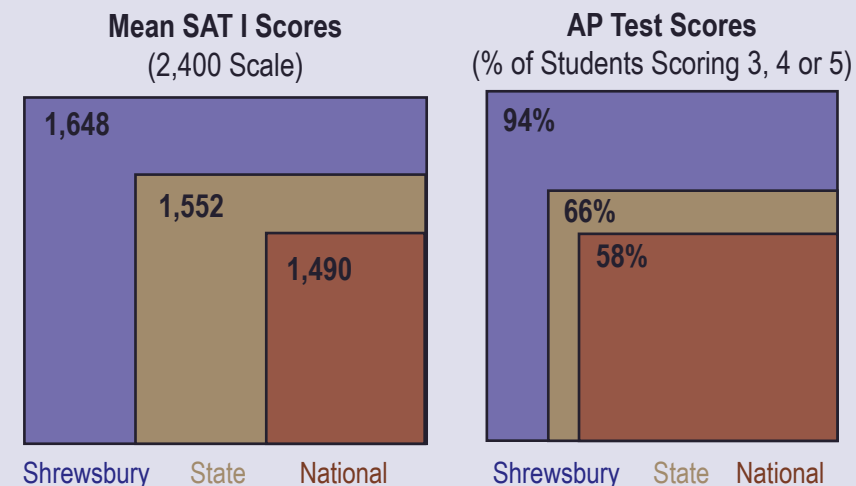
# Academic Achievement & Student Outcomes

## Future Plans - Class of 2015

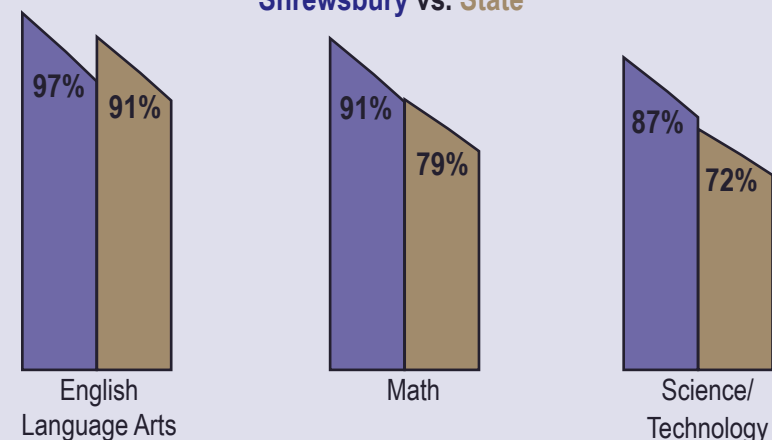


October 1, 2015 Statistics - Sources: Department of Elementary and Secondary Education and Shrewsbury Public Schools

## Test Scores



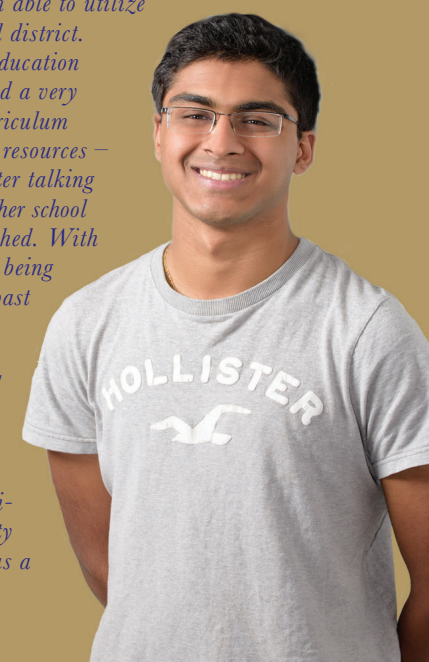
## Grade 10 MCAS Test Scores (% of students scoring proficient or higher) Shrewsbury vs. State



## Meet

- ▼ **Vikram Pathalam, Class of 2017** - Vikram is a member of the Student Advisory Committee, Speech and Debate team, Crew team and more!

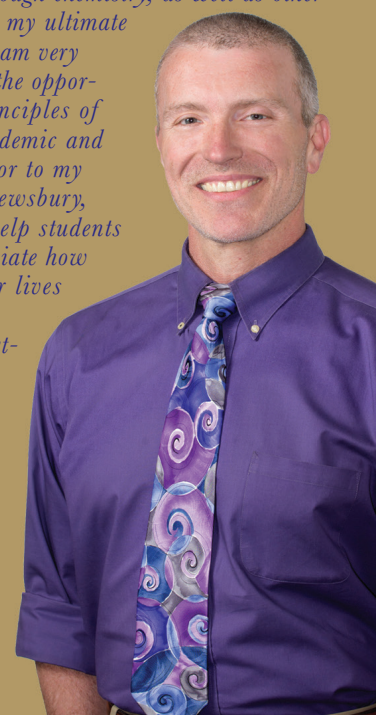
*"As a student, I have been given the access to countless opportunities and resources I surely wouldn't have been able to utilize in any other school district. The Shrewsbury education system has provided a very comprehensive curriculum with technological resources – something that, after talking to my friends in other school districts, is unmatched. With the iPad initiative being implemented this past year, the culture in the high school surely has changed a lot. However, this change has only strengthened our learning experience and our ability to use technology as a whole."*



## Meet

- ▼ **Dr. Derric Lowery** - Dr. Lowery has been teaching chemistry at SHS for 13 years. He holds both a B.S. and Ph.D. in chemistry from the University of Georgia. Prior to beginning his career as a high school teacher he worked as a research chemist for ExxonMobil, and taught chemistry at the University of South Carolina and WPI.

*"Nurturing the drive within students to understand the world around them through chemistry, as well as other branches of science, is my ultimate goal as an educator. I am very fortunate to have had the opportunity to apply the principles of chemistry in both academic and industrial settings prior to my teaching career in Shrewsbury, which enables me to help students understand and appreciate how chemistry affects their lives beyond what can be learned from just a textbook. The Shrewsbury Public Schools have always provided the support and autonomy that allow my colleagues and me to pursue our collective visions of what a first-year chemistry course should be."*



## Digital Connections

The Shrewsbury Public School District, in alignment with its strategic priority of Enhancing Learning Through Technology, has met its goal of having all students in grades 5-12 in a 1:1 learning environment.

**"If we teach **TODAY'S** students  
as we taught **YESTERDAY'S**,  
we rob them of **TOMORROW'S**."**

~ John Dewey

All students at Sherwood, Oak, and SHS have a district-issued iPad that provides access, both at school and at home, to the wealth of digital resources that are now available to support their education. Our students first learn how to navigate the digital environment through our digital citizenship curriculum. Within this environment, they then learn how to curate information, to conduct research, and to create, communicate, and publish their thinking in a variety of different ways. Our students are also developing the capacity to build collaborative online networks and to use these connections to solve problems and innovate.

*A special thank you to resident Joyce Maranto/Maranto Studios Photography for taking all the photos on this page. She graciously volunteered her time and talent!*

Non-profit Org.  
U.S. Postage PAID  
Permit NO. 101  
Worcester, MA.  
01613



Check out our newly remodeled facility!

Outdoor Pool - Tennis  
Basketball - Baseball - Soccer  
Cardio & Weight Room

3 Tennis Drive, Shrewsbury, MA  
Phone: 508.842.5000  
www.shrewsburyclub.com  
email: info@shrewsburyclub.com

**50% off**  
Joining Fee When  
Signing Up For Annual  
Membership

**15% off Summer**  
Sports & Tennis Camps  
& Summer Swim Lessons



**ATFS Learning Center**  
Building the academic foundation

**NOW ENROLLING FOR 2016-17**

**Private Tutoring**

Basic Math ~ Pre-Algebra ~ Algebra I and II  
Geometry ~ Trigonometry ~ Pre-Calculus ~ Calculus  
Chemistry ~ Physics ~ Biology  
English ~ Reading ~ Writing

**Homework Help**

All Subjects ~ After School Program

Call Now  
508.719.0014

Email: gauri@atfsonline.com ~ www.atfsonline.com

**SAT Test Prep ~ Improve Grades**



**Expert Help for  
Buyers and Sellers!**

**Thinking of buying  
or selling? Call Lisa.**

**Lisa Bradley, RE/MAX Vision**

REALTOR® / Broker Associate  
181 Main Street, Shrewsbury, MA 01545  
Cell: 617-803-9863 | Tel: 508-842-3000



**Special thanks to these community partners for their sponsorship!**



*Central One proudly supports Shrewsbury Public Schools through  
donations, scholarships, grants and by  
teaching financial literacy classes to every Senior at SHS.*



Located at 714 Main St & inside SHS for students and faculty

Open a share draft checking account, get

**\$100.** after your first  
direct deposit\*

& Debit card access, No monthly fee, No minimum balance,  
Mobile Check Deposit and more!

Federally insured by NCUA.

\*One-time \$100 applied within 60 days of direct deposit. Must use ClickSwitch to qualify. Additional terms & conditions apply, see branch for details.

Central One is a **NOT-FOR-PROFIT** financial institution.



**We're not a bank. We're better!**  
800-527-1017 • www.centralfcu.com

