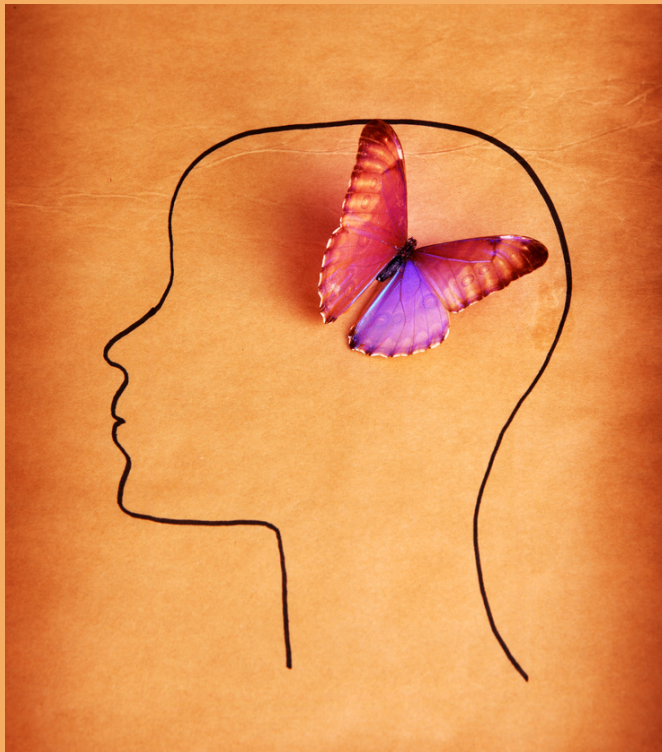


*Shrewsbury Public Library presents*

## **Dementia & Alzheimer's:**

**Compassionately & Effectively Working with People with Dementia**



**Wednesday, February 16th**  
**7pm on Zoom**

Additional funds provided by  
the Friends of the Shrewsbury Public Library

*Federal funds provided by*



*Funds administered by*

**Massachusetts Libraries**  
BOARD OF LIBRARY COMMISSIONERS