

- Table of Contents
- Beal Highlights
- A Message from the Principals
- Important Dates
- Picture Day- September 12th!
- Beal Curriculum Nights
- Child Safe Procedures
- SPS Extended School Care Program
- Arrival and Dismissal Procedures
- Safety Tip Line
- Lunch and Snack at Beal
- Notes from the Beal PTO
- Frequently Used Numbers

THE BEAL BULLETIN

September 10, 2023

Beal Highlights



A Message from the Principals

Dear Beal Families,
It was another great week at Beal Elementary School! Jiji made her debut and all students began their journey with ST Math. Students are excited to engage with Jiji while learning math!

Students and staff continue to build their classroom and school community as well as engaging in activities to reinforce the SEL competency: self management. September's social emotional learning objective is demonstrating impulse control and stress management. Ask your child what expected and unexpected behaviors are and to describe thinking and talking bubbles. These are great to reinforce at home as well!

Thank you for your continued patience as we become more efficient at dismissal. As you know, bus dismissal has been later than expected. Most buses have not arrived at Beal until after 3:45 each day. We are working with the bus company to get buses on our campus earlier.

Please continue reading the Beal Bulletin for some important information. If you need assistance during at any point during the school year, please call our main office at (508) 841-8860.

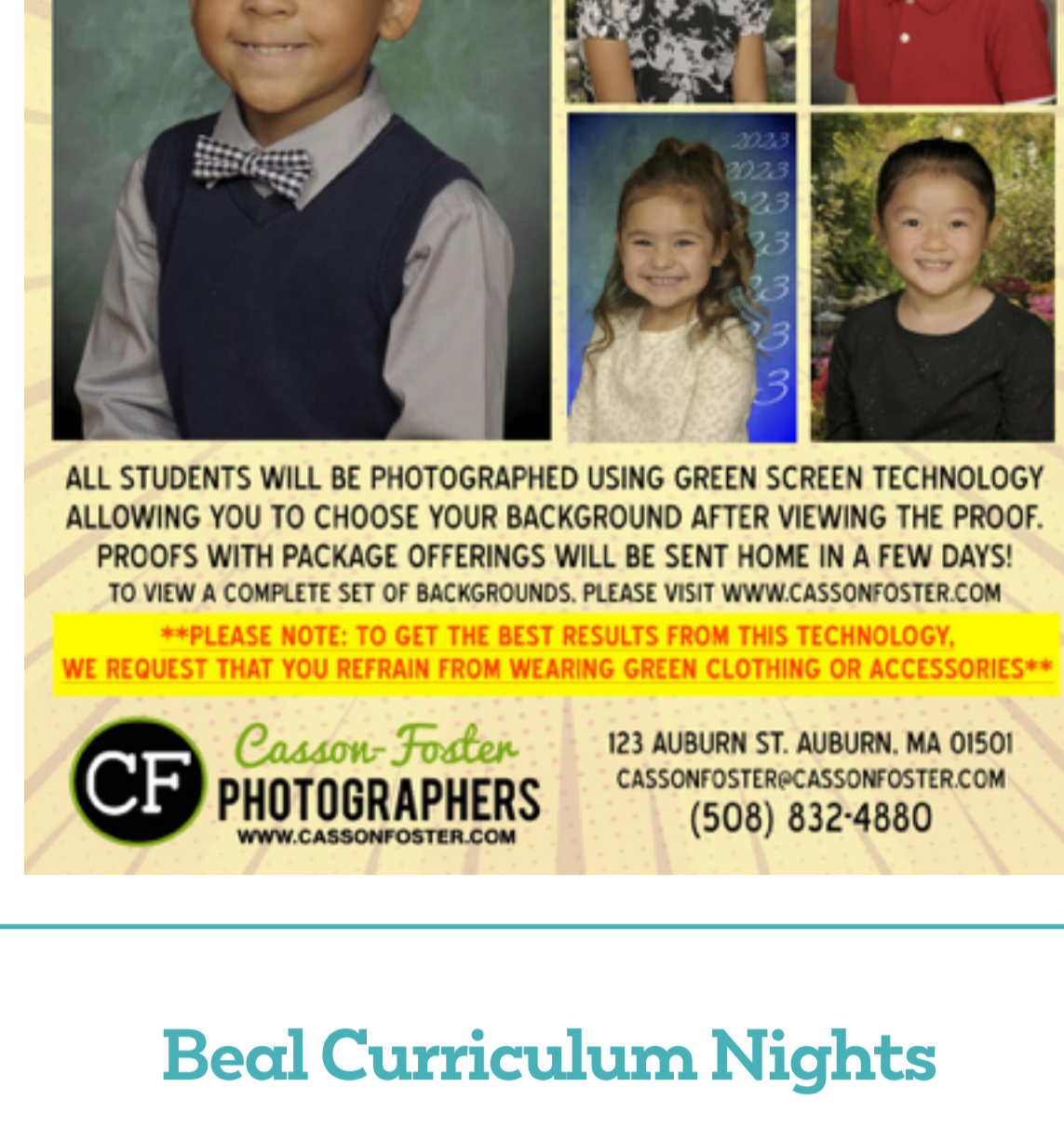
Sincerely,
Kristen Gasper and Shelley Hoey

Important Dates

- Please mark your calendars with these important dates. More information about each of these events can be found in the newsletter and/or future newsletters.
- Tuesday, September 12th- Picture Day
 - Wednesday, September 13th - Curriculum Night for Grades K-2: 6:00-7:00pm
 - Thursday, September 14th - Curriculum Night for Grades 3-4: 6:00-7:00pm
 - Tuesday, September 19, 2023- PTO Meeting, 6:30 pm, Beal Library & Zoom
 - Tuesday, September 26, 2023- Bookworm Breakfast, 8:15-9:15 am, Beal Library
 - Friday, October 6, 2023- No School- Professional Development Day
 - Monday, October 9, 2023- No School- Columbus Day/Indigenous Peoples' Day

[Shrewsbury Public Schools Calendar 2023-2024](#)

Picture Day- September 12th!



Beal Curriculum Nights

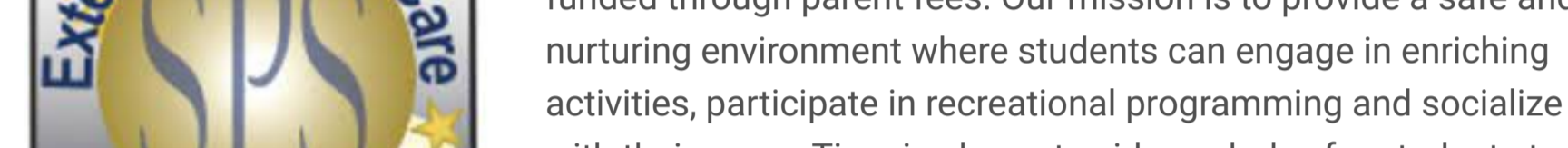
Curriculum Nights provide an important opportunity to strengthen the home-school connection. You will spend most of the evening in your child's classroom where your child's teacher will share curriculum highlights as well as classroom procedures and routines. Additionally, you will spend about 15 minutes in the gym where Mrs. Gasper and Mrs. Hoey will provide additional information about the year ahead. We hope you are able to join us!

- September 13 - K-2 Curriculum Night / 6:00-7:00 pm
- September 14 - Gr 3 & 4 Curriculum Night / 6:00-7:00 pm

Please note, this evening is intended for parents and caretakers. Thank you in advance for arranging childcare.

Child Safe Procedures

If your child is going to be absent or late to school, we require that you telephone us either the night before or first thing in the morning on the day of the absence at (508) 841-8860. The answering machine for our child-safe procedure is on 24 hours a day. If we have not received a call to report an absence, the school will be in contact with the parent or emergency contact to confirm the child's safety. Please help our busy office staff by always calling us when your child will be absent or tardy.



SPS Extended School Care Program

Extended School Care (ESC) provides quality before and after school care for children in kindergarten through sixth grade. Operated by the Shrewsbury Public Schools, the program is fully funded through parent fees. Our mission is to provide a safe and nurturing environment where students can engage in enriching activities, participate in recreational programming and socialize with their peers. Time is also set aside each day for students to work on their homework. Our experienced and caring staff members create fun and innovative programming for students of all ages, interests and abilities. We focus on building positive relationships, developing social skills, strengthening self-esteem, and encouraging independence, responsibility and good decision-making. Our programs are located within the school building at Beal, Coolidge, Floral, Paton, Spring and Sherwood.

Click [here](#) for more information about the program and how to register.

Arrival and Dismissal Procedures

[Click here](#) to listen to a video of arrival & dismissal routines

Student Drop Off 8:45- 9:15 am & Pick Up 3:30- 3:45 pm
Cars will use the first entrance on Lake Street and drive along the back of the building to the blacktop playground area. Students will remain in the car while a staff member directs the car to the drop off spot. Students will exit the car and enter the building using the downstairs doors. Cars will exit the drive by going back around the building and out the first entrance on Lake Street.

IMPORTANT PARENT DROP OFF INFORMATION:
The gate will close in the morning at 9:13. If you arrive after the gate is closed, please drive to the front of the building and walk your child into the office to be signed in.

IMPORTANT PARENT PICK UP INFORMATION:
Parent pick up runs from 3:30-3:45 pm. Gates to the parent pick up line will open around 3:15 pm. You will follow the same pattern as drop off, using the north entrance, and loop around the school to the lower lobby doors. Please have your child's name displayed on your windshield and be ready to show proof of identification (driver's license) so we know that we are releasing your child to an approved adult. If you arrive after 3:45, please drive to the front of the building and come to the main office to pick up your child.

***Please note:** We want to avoid cars backing up onto Lake Street, so please do not arrive and park on campus prior to 3:00 pm.

Student Bus Route
Buses will use the second entrance on Lake Street. Students will exit and enter the buses by the doors of our front lobby.

Student Walker Route
At the end of the day, students will exit the doors of our front lobby. A staff member will walk students to the sidewalk on Lake Street.

Safety Tip Line

This anonymous form can be used to submit information that may be helpful in ensuring the safety of students, faculty, and property of the Shrewsbury Public Schools in Shrewsbury, Massachusetts.

This form creates an electronic email alert to several staff members of the Shrewsbury Public Schools. It does not go to the Shrewsbury Police Department.

Staff email alerts are generally monitored Monday through Friday during business hours of 8am to 4:30pm.

If the information you have is TIME SENSITIVE, please call 911 for assistance.

If you wish to speak to a representative from the Shrewsbury Police Department and your concern is not urgent you can reach them 24/7 by calling 508-841-8577.

Lunch and Snack at Beal

The calendar for school lunch for this week is below. Students may choose a free lunch from the cafeteria or bring their own from home. Please connect with your classroom teacher if you have questions about your child's lunch. Also, please send a snack in with your child each day. Teachers will build a short snack time into their daily schedule depending on what time their lunch block is.

Breakfast is now available each day and will be served from 8:45-9:15 in the cafeteria. Students may choose a free breakfast upon arrival.

11. Meat's Pizza Turkey and Cheese on a Roll w/Garden! Steamed Broccoli Pasta Salad Canned Sticks and Hummus Watermelon	12. Pasta Marinara Sauce and Meatballs Brunch Bag Steamed Fries Toasted Salad Rice Peaches	13. Breakfast for Lunch (Milk, Waffles, Scrambled Eggs and Bacon) Toasted Ham and Cheese on a Croissant /Pretzels Steamed Carrots Macaroni Salad/Mixed Fruit	14. Chicken Patty or Garden Burger Brunch Bag Baked Fries Mixed Vegetables Hummus and Celery Sticks Apples	15. Chicken Nuggets Grilled Cheese Sandwich Mashed Potatoes Garden Salad Corn Rice Pears
---	---	---	---	--

Notes from the Beal PTO

Meetings
Save the Date: Our next PTO meeting will be Tuesday Sept 19th at 6:30 in the media center and on zoom. We are excited to plan some fun activities! Please join us! If you will be joining us by Zoom, keep the handout at the ready and follow this [link](#).

Please join us at a meeting, follow our Facebook page, and email us at Bealschoolpto@gmail.com. We look forward to growing our community together!

Opportunity to sponsor T-Shirts: Do you own or know a local business that is interested in sponsoring Beal t-shirts for our students? We are excited to announce that we are moving our big school fundraiser to the Fall (Friday, November 3) and are once more planning to give each of our students a new school shirt! We are currently looking for businesses to sponsor the t-shirts. See [HERE](#) for details and [HERE](#) to make your payment through Paypal.

Beal BookWorm: If you have a child with a birthday in August, September, or October please be on the lookout for a flyer inviting them to our quarterly BookWorm breakfast that will be held on Tuesday, September 26 from 8:15-9:15 am in the Media Center.

2023- 2024 Beal School Classroom Directory
Want to connect with other families in your child's class? [Sign up for the Beal School Classroom directory!](#) Your information will only be shared with the families in your class.

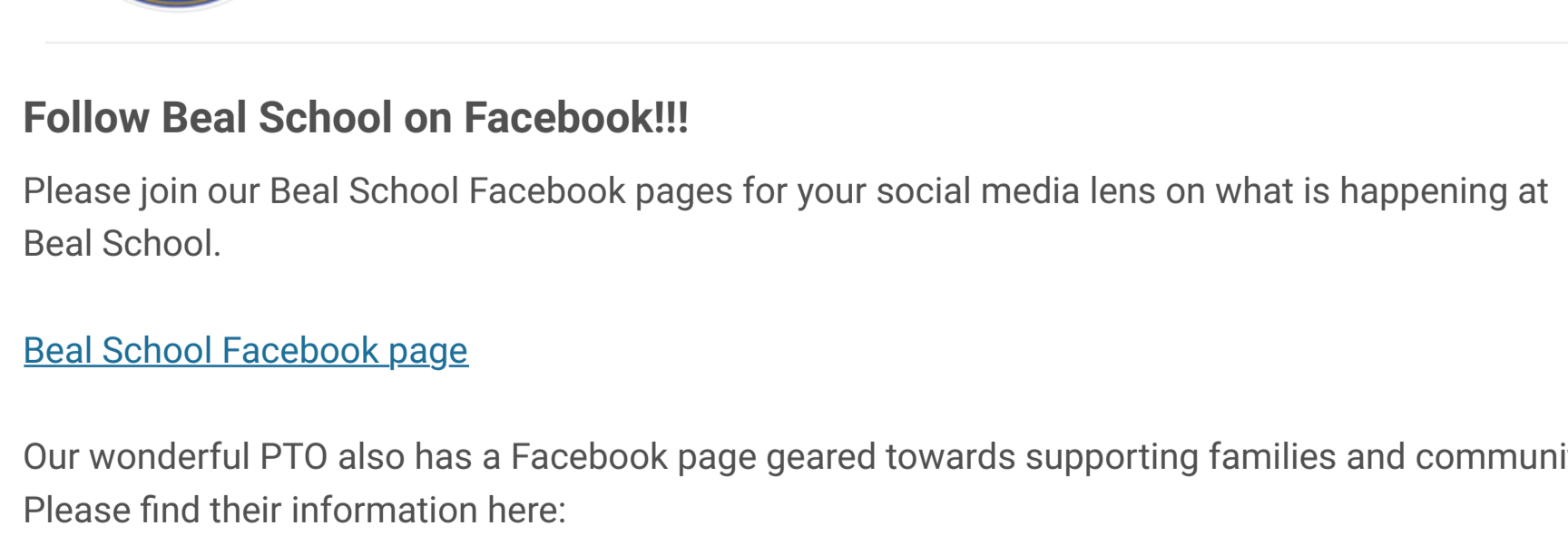
Volunteers at Beal
CORIs
Volunteering in school is a great way to be connected to your child's school experience and help the school at the same time. In order for this to be possible, all volunteers are required to complete a CORI (Criminal Offender Record Information) verification with Shrewsbury Public Schools. Please visit Beal's front office or the Shrewsbury School Department at Town Hall with your identification to submit the required paperwork (passport, drivers license, state issued ID card or permanent residency card). Please allow at least 2 weeks for processing. These verifications are valid for 3 years.

Cafeteria Volunteers
Would you like to volunteer at school? Our students in Kindergarten and 1st Grade often need a little extra support at the beginning of the school year to set up their lunches. Help from families would be greatly appreciated! Please see the following link for details: [2023 Fall Cafeteria Volunteers](#) and don't forget to get your CORI check in order before coming in.

Frequently Used Numbers

- Main Office- (508) 841-8860
- School Fax- (508) 841-8862
- School Nurses- (508) 841-8870
- Nurses Fax- (508) 841-1535
- Extended Day- (508) 841-8861

Looking to Purchase Beal Swag?
Click on the QR code below



Follow Beal School on Facebook!!!
Please join our Beal School Facebook pages for your social media lens on what is happening at Beal School.

[Beal School Facebook page](#)

Our wonderful PTO also has a Facebook page towards supporting families and community. Please find their information here:

[Beal school PTO Facebook page](#)

Kristen Gasper, Principal
Email: kgasper@shrewsbury.k12.ma.us
Website: <https://schools.shrewsbury.ma.gov/beal>
Location: 214 Lake Street
Phone: (508) 841-886

Shelley Hoey, Assistant Principal
Email: shoey@shrewsbury.k12.ma.us
Website: <https://schools.shrewsbury.ma.gov/beal>
Location: 214 Lake Street
Phone: (508) 841-886