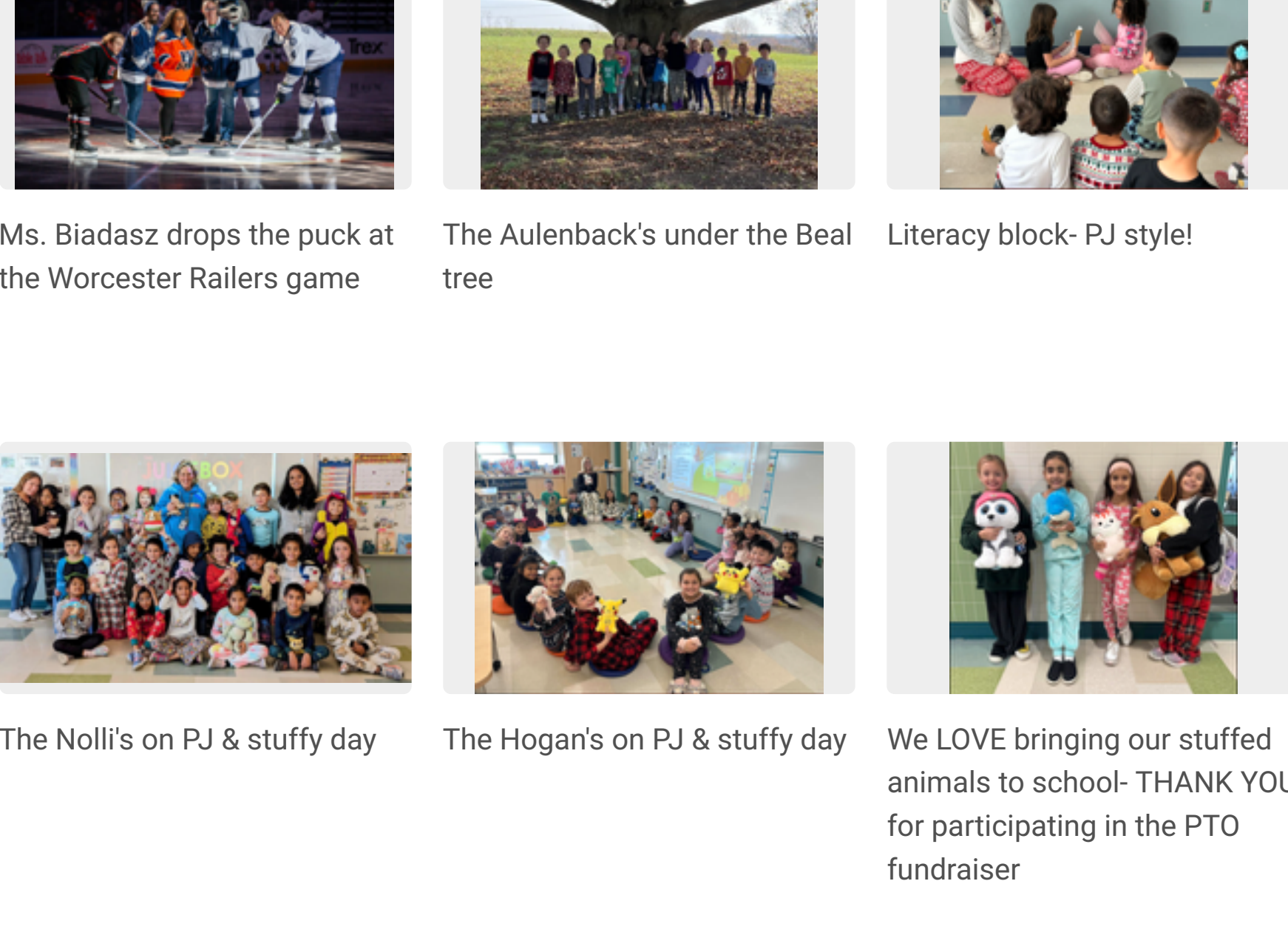


- Table of Contents
- Beal Highlights
- A Message from the Principals
- Continue the Conversation
- It Takes A Village
- A Note from Food Services
- Kids Night Out at SHS
- Important Dates
- Notes from the Beal PTO
- Child Safe Procedures
- Safety Tip Line
- Lunch Menu
- Frequently Used Numbers
- Beal School Swag

THE BEAL BULLETIN

November 12, 2023

Beal Highlights



Ms. Biadasz drops the puck at the Worcester Railers game The Aulenback's under the Beal tree Literacy block- PJ style!

The Noll's on PJ & stuffy day The Hogan's on PJ & stuffy day We LOVE bringing our stuffed animals to school- THANK YOU for participating in the PTO fundraiser

A Message from the Principals

Dear Beal Families,

We hope you enjoyed the long weekend in honor of Veterans Day. A special thank you to our veterans for their service to our country.

To those in our community who celebrate Diwali, may this festival of lights bring peace and happiness.

Please continue reading the Beal Bulletin for some important information. If you need assistance during at any point during the school year, please call our main office at (508) 841-8860.

Sincerely,
Kristen Gasper and Shelley Hoey

Continue the Conversation

On Thursday you met with your child's teacher. Thursday is not the end of the conversation. Continue the conversation with your child each day. What was the best part of their day? Share the best part of your day. Was there something they wished they handled differently? What was it? How would they do it differently next time? Share what you would do differently if given the opportunity. If you have any concerns or questions about something your child says, please reach out to us.

[What did you learn at school today?](#) has a list of questions and conversation starters to help facilitate the dialogue.

It Takes A Village

One wonderful thing about Shrewsbury is the support that we give each other when times are difficult. If you are having difficulty obtaining warm winter clothes, food for the holidays, or any need that your family may have, please reach out to our School Adjustment Counselor, Carly Kadlik by email at ckadlik@shrewsbury.k12.ma.us or by telephone at (508) 841-8478. The information you share is completely confidential.

A Note from Food Services

Free and Reduced Price Meal Application—Why Apply?

Although meals are free for all students regardless of income, we encourage families who would otherwise qualify for free or reduced price meals [based upon household income/economic need] to complete the Free/Reduced Price Meal Application so as to potentially be eligible for free or reduced fees for busing, Extended School Care, or athletics. [Click here to access that form https://shrewsbury.familyportal.cloud](https://shrewsbury.familyportal.cloud)

Kids Night Out at SHS



Important Dates

Please mark your calendars with these important dates.

- Tuesday, November 14, 2023- PTO Meeting, 6:30 pm- Beal Library
- Wednesday, November 22- Friday, November 24, 2023- No School- Thanksgiving Break
- Friday, December 1, 2023- All School Meeting
- Tuesday, December 5, 2023- 1/2 Day of School- Professional Development Day
- Tuesday, December 12, 2023- PTO Meeting, 6:30 pm- Beal Library
- Monday, December 25, 2023- Monday, January 1, 2024- No School- December Break

[Shrewsbury Public Schools Calendar 2023-2024](#)

Notes from the Beal PTO



Please join our PTO meeting this Tuesday, November 14th at 6:30 pm in the media center and on [zoom](#). Here are our [minutes](#) from our last meeting as well as our [agenda](#) for this meeting. Please join us as we recap the hard work done so far with our Fall Book Fair, School Supply drive, and the success of the Beal Bop fundraiser while also looking ahead to future volunteer opportunities. Unfortunately, we do not have childcare for the meeting but we encourage you to take advantage of the zoom option if that is easier.



Supply Drive for staff - Thank you!

Thank you to all the families that donated to our school supply drive during parent/teacher conferences last week. Your generosity will allow the staff at Beal to continue their amazing work of educating our students with some extra love and support this winter.



Staff Appreciation - Pizza lunch

The Beal PTO provided lunch on Thursday, November 9th to staff during the parent/teacher conference day. We are grateful every day for the teachers who give so much of themselves so our students can shine!



Mabel's Labels

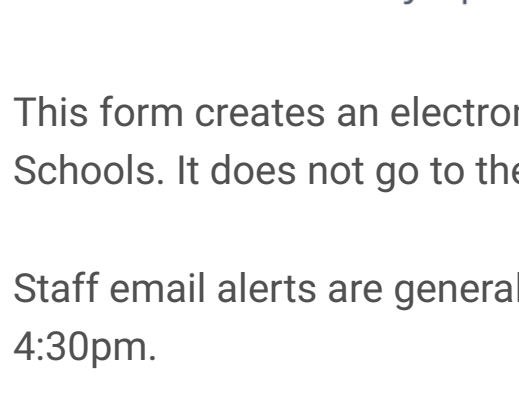
If you would like help tracking down those lost mitts, hats and sweaters this winter, please consider labeling your gear with [Mabel's Labels](#).

You can buy labels and stamps with your child's name and support the PTO at the same time. Search for Beal School Shrewsbury in the search bar and the company will donate a percentage of your order back to the school.

Child Safe Procedures

If your child is going to be absent or late to school, we require that you telephone us either the night before or first thing in the morning on the day of the absence at (508) 841-8860. The answering machine for our child-safe procedure is on 24 hours a day. If we have not received a call to report an absence, the school will be in contact with the parent or emergency contact to confirm the child's safety. Please help our busy office staff by always calling us when your child will be absent or tardy.

Safety Tip Line



This anonymous form can be used to submit information that may be helpful in ensuring the safety of students, faculty, and property of the Shrewsbury Public Schools in Shrewsbury, Massachusetts.

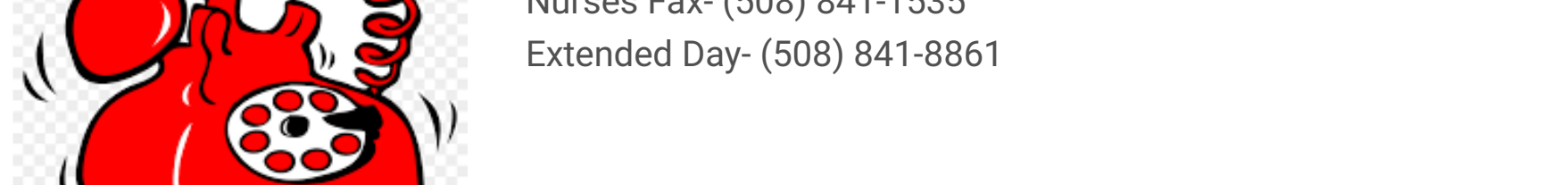
This form creates an electronic email alert to several staff members of the Shrewsbury Public Schools. It does not go to the Shrewsbury Police Department.

Staff email alerts are generally monitored Monday through Friday during business hours of 8am to 4:30pm.

If the information you have is TIME SENSITIVE, please call 911 for assistance.

If you wish to speak to a representative from the Shrewsbury Police Department and your concern is not urgent you can reach them 24/7 by calling 508-841-8577.

Lunch Menu

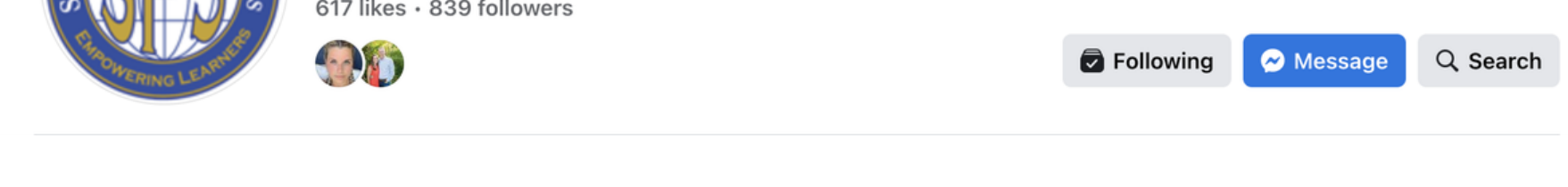
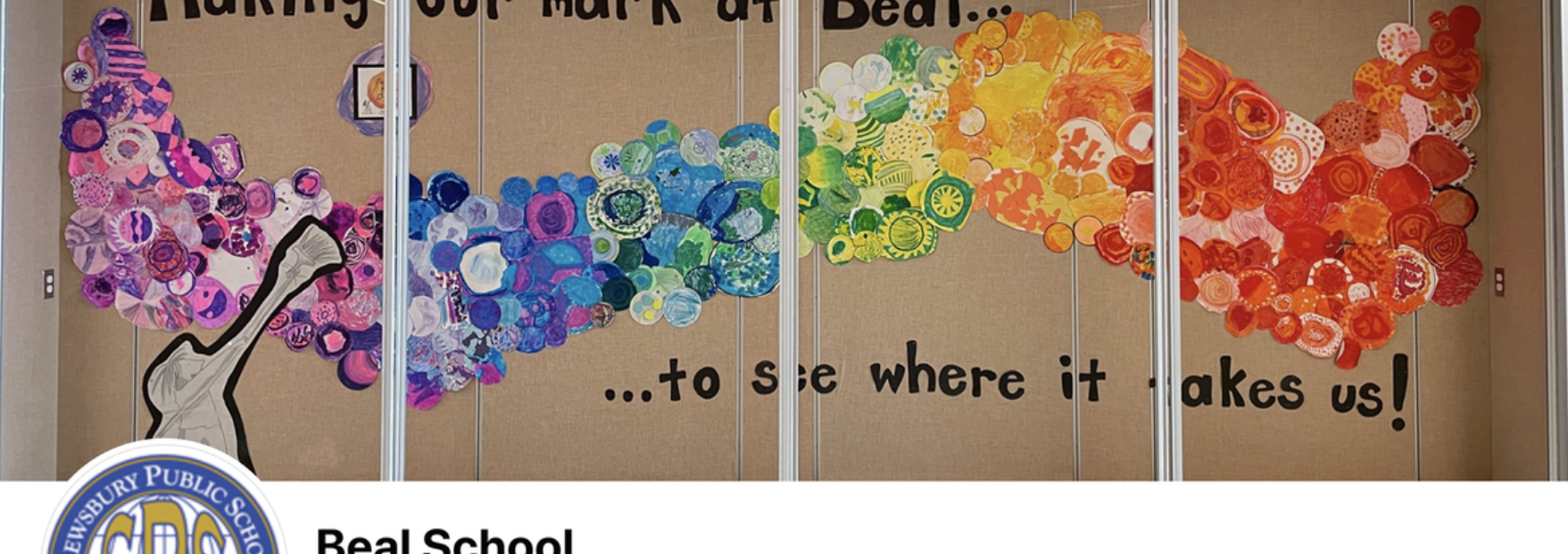


Frequently Used Numbers



Main Office- (508) 841-8860
School Fax- (508) 841-8862
School Nurses- (508) 841-8870
Schools Fax- (508) 841-1535
Extended Day- (508) 841-8861

Beal School Swag



Follow Beal School on Facebook!!!

Please join our Beal School Facebook pages for your social media lens on what is happening at Beal School.

[Beal School Facebook page](#)

Our wonderful PTO also has a Facebook page geared towards supporting families and community. Please find their information here:

[Beal school PTO Facebook page](#)

Kristen Gasper, Principal
Email: kgasper@shrewsbury.k12.ma.us
Website: <https://schools.shrewsbury.ma.gov/beal>
Location: 214 Lake Street
Phone: (508) 841-8860

Shelley Hoey, Assistant Principal
Email: shoey@shrewsbury.k12.ma.us
Website: <https://schools.shrewsbury.ma.gov/beal>
Location: 214 Lake Street
Phone: (508) 841-8860

